

GPS CONTROL POINTS

Zone: Vermont 4400  
 Geoid: GEOID09 (Conus)

HVCTRL #1

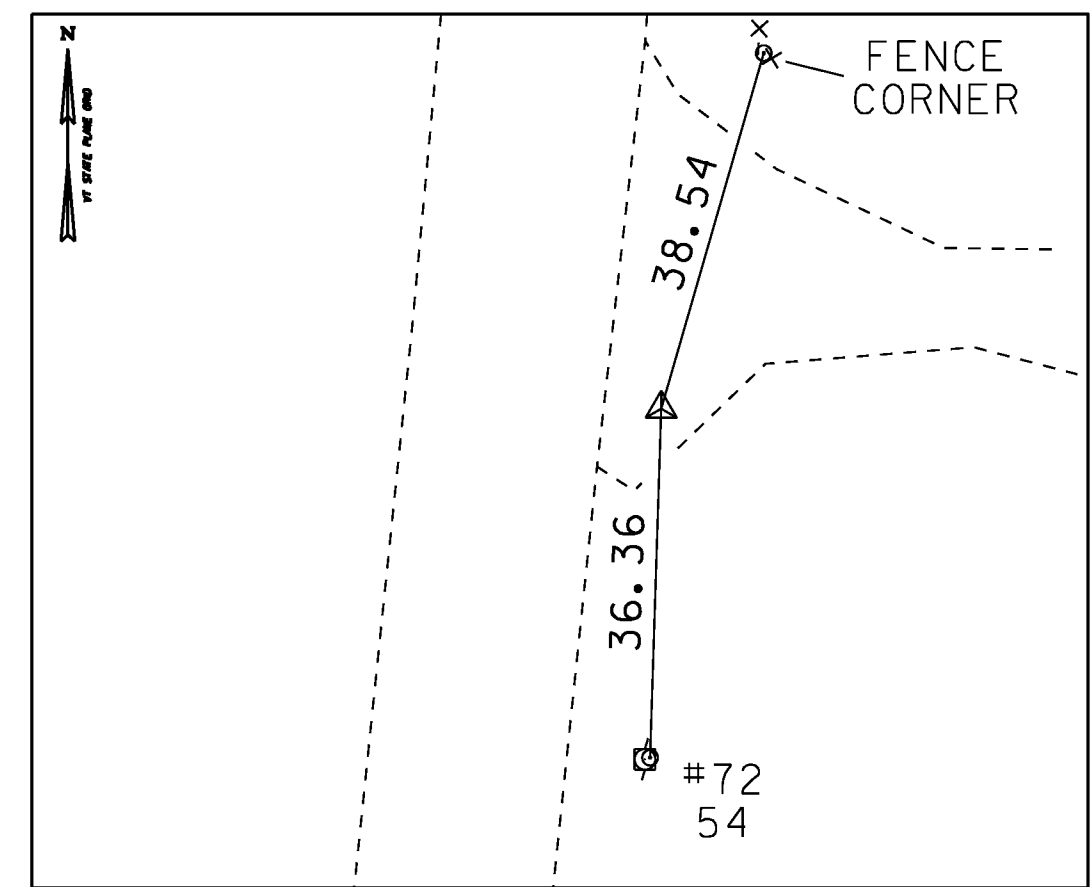
FFP1 [TEMPORARY]  
 NORTH = 825855.295  
 EAST = 1520013.268  
 ELEV. = 616.620

GENERAL LOCATION, FAIRFIELD, VT.  
 THE MARK IS A 14 CM (6 INCH) SPIKE DRIVEN INTO THE GROUND.  
 TO REACH FROM THE INTERSECTION OF VT ROUTE 36 AND SOUTH ROAD IN FAIRFIELD, GO SOUTH ALONG SOUTH ROAD FOR 2.3 MI (3.7 KM) TO THE SITE OF THE MARK ON THE LEFT SET IN THE SHOULDER ON THE EAST SIDE OF SOUTH ROAD. IT IS ABOUT 0.3 MI (0.5 KM) NORTH ALONG SOUTH ROAD FROM THE INTERSECTION OF BUCK HOLLOW ROAD.

HVCTRL #2

FFP2 [TEMPORARY]  
 NORTH = 827674.479  
 EAST = 1521551.675  
 ELEV. = 602.150

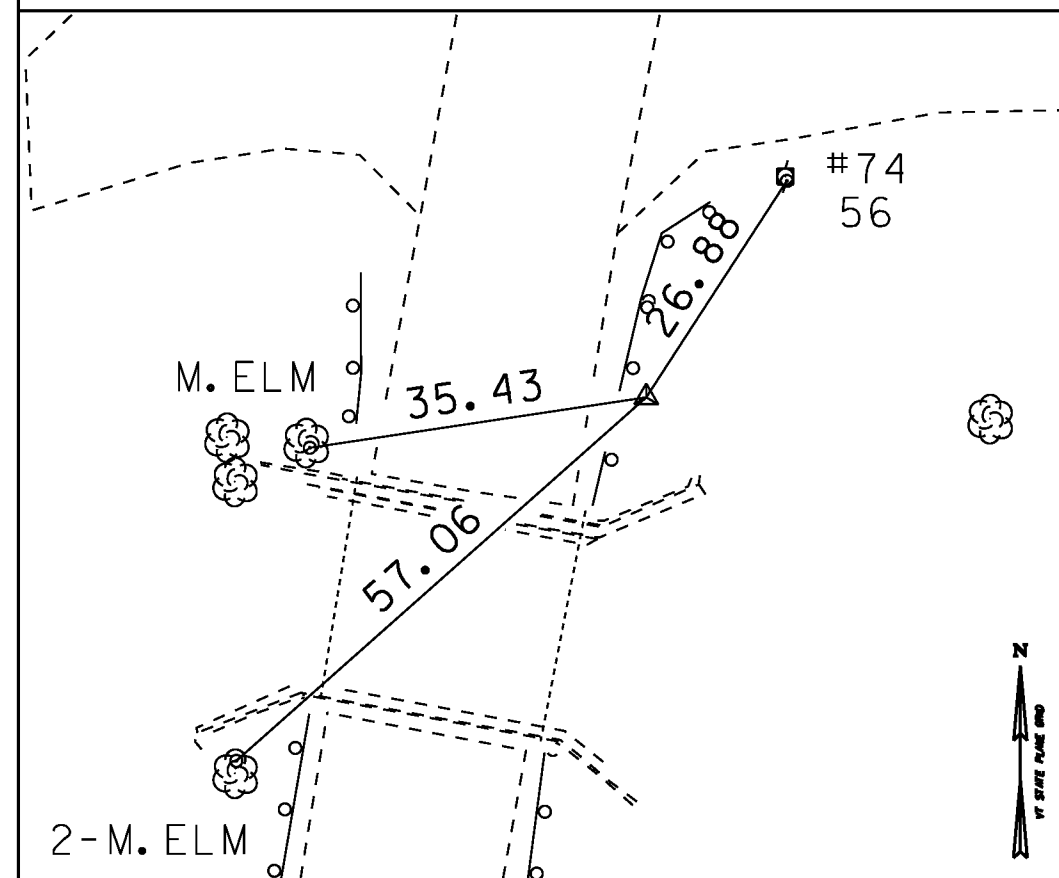
GENERAL LOCATION, FAIRFIELD, VT.  
 THE MARK IS A 14 CM (6 INCH) LONG SPIKE DRIVEN INTO THE GROUND.  
 TO REACH FROM THE INTERSECTION OF VT ROUTE 36 AND SOUTH ROAD IN FAIRFIELD, GO SOUTH ALONG SOUTH ROAD FOR 2.6 MI (4.2 KM) TO THE INTERSECTION OF BUCK HOLLOW ROAD RIGHT. \* TURN RIGHT AND GO WEST ALONG BUCK HOLLOW ROAD FOR 0.2 MI (0.3 KM) TO THE MARK ON THE RIGHT SET IN THE SHOULDER ON THE NORTH SIDE OF THE ROAD.



TRAVERSE TIES

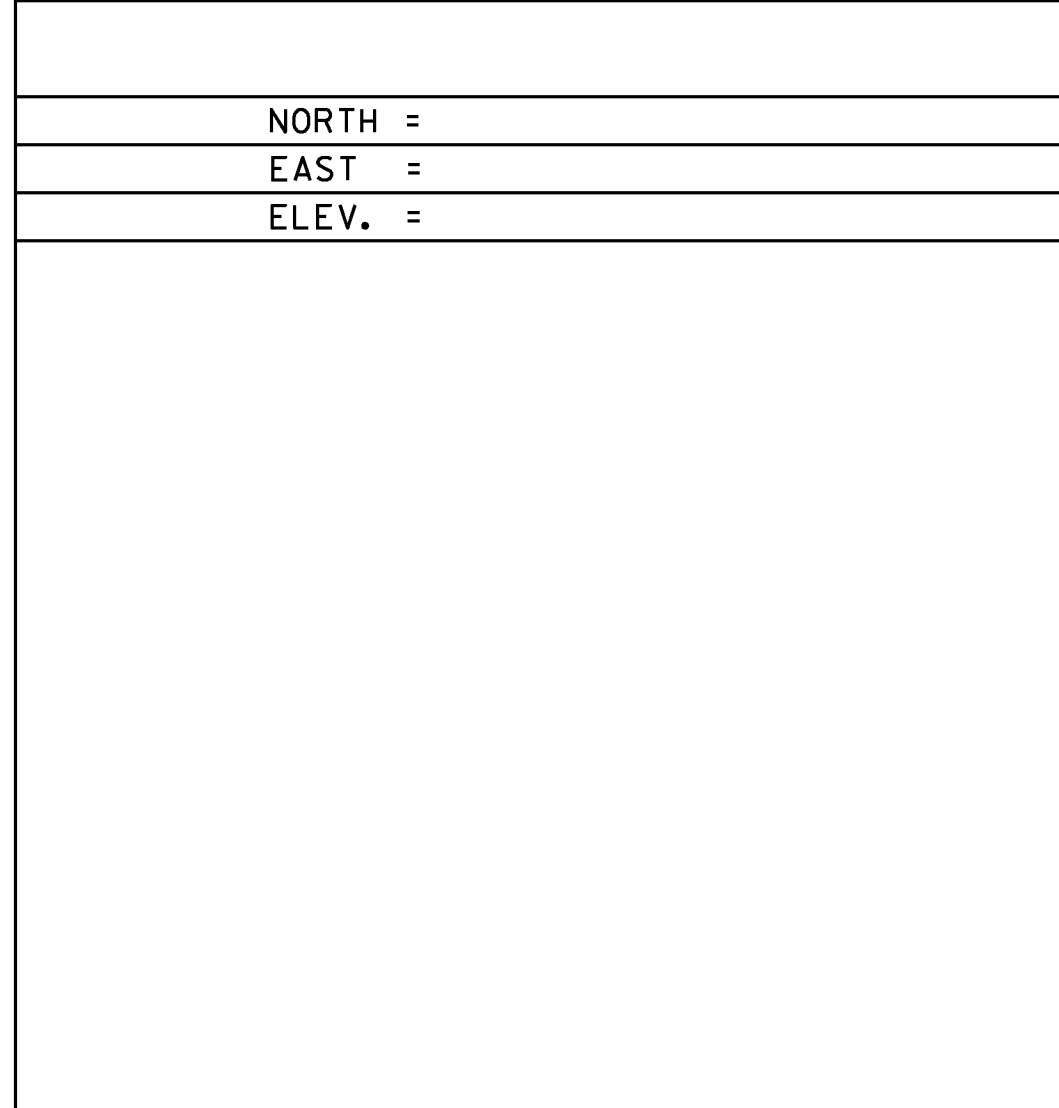
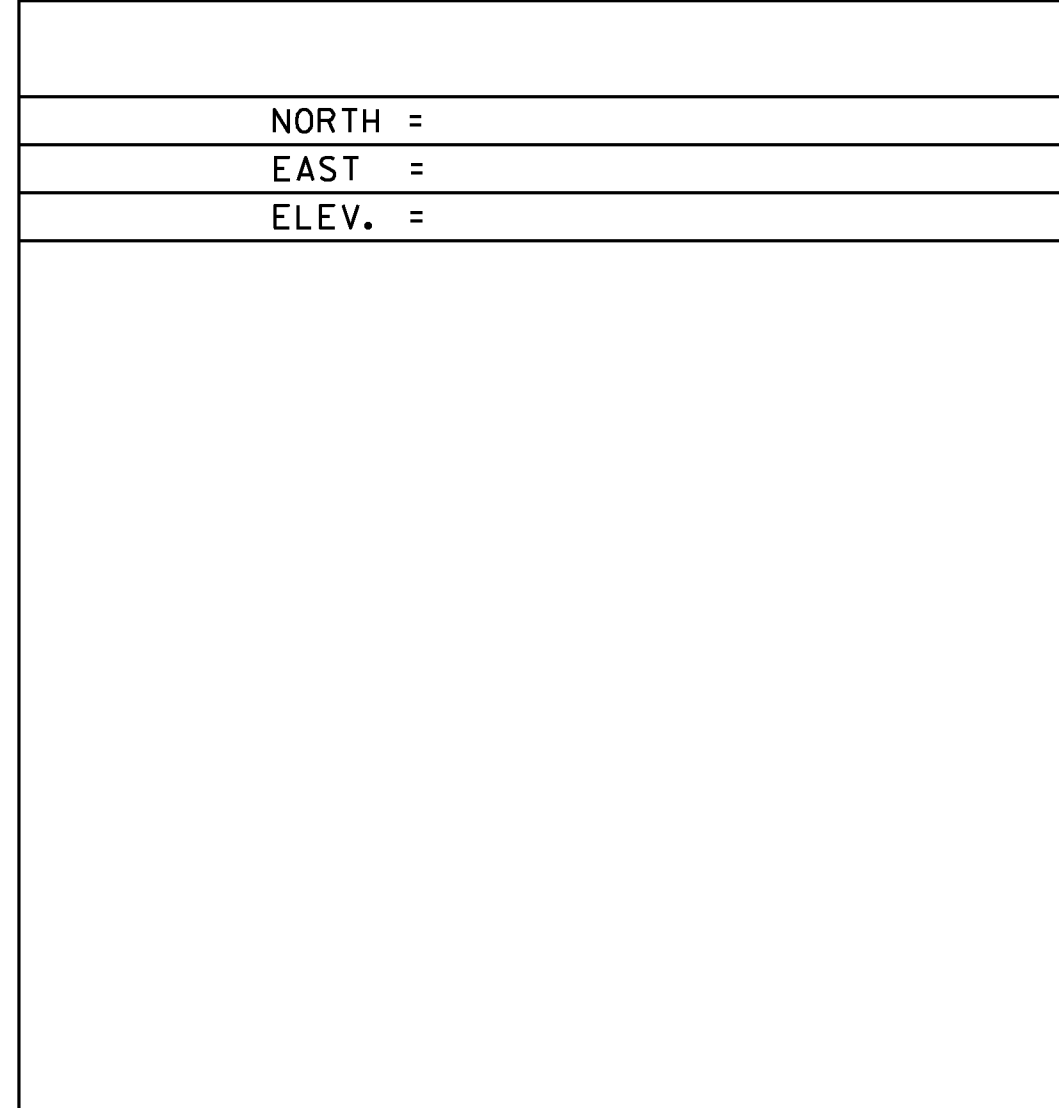
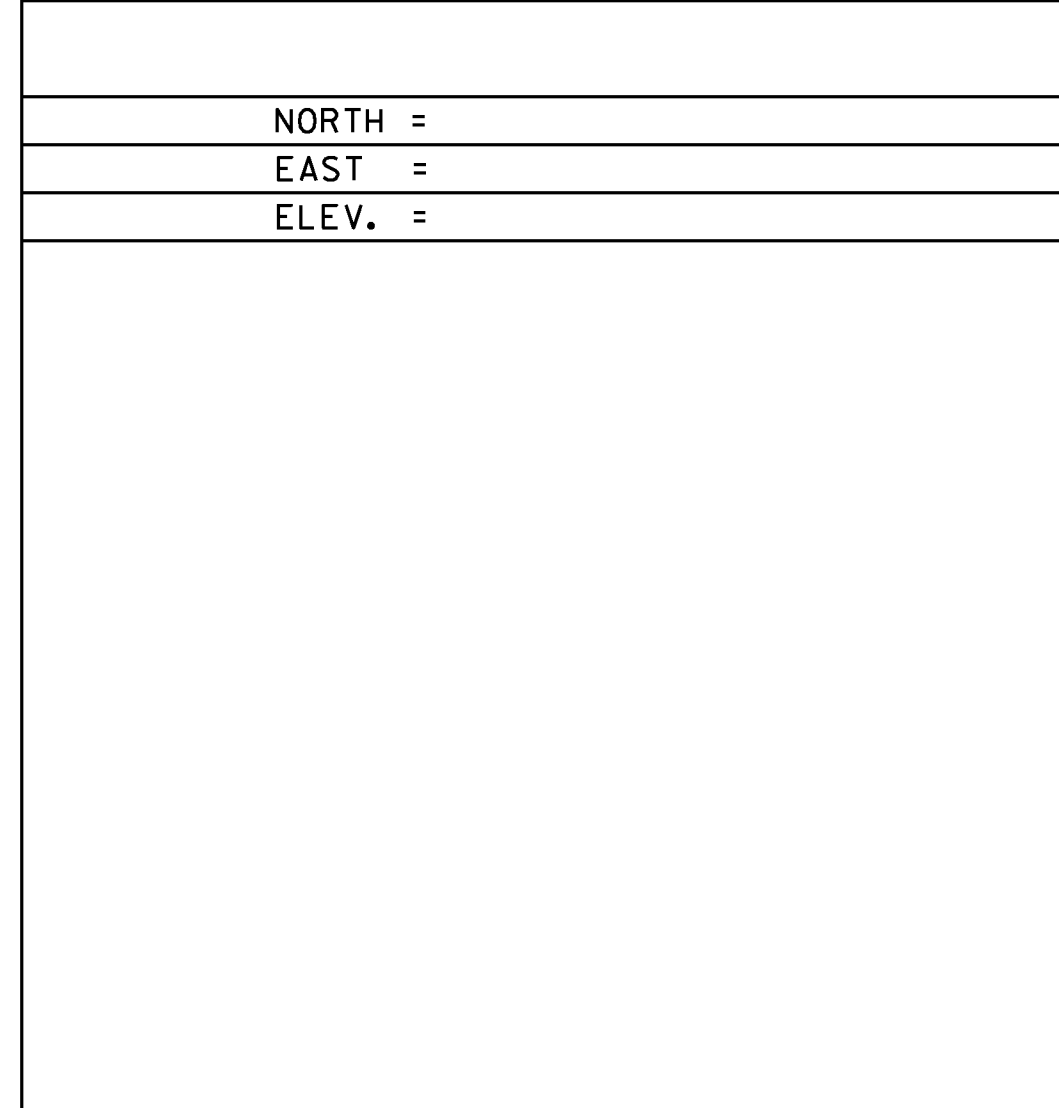
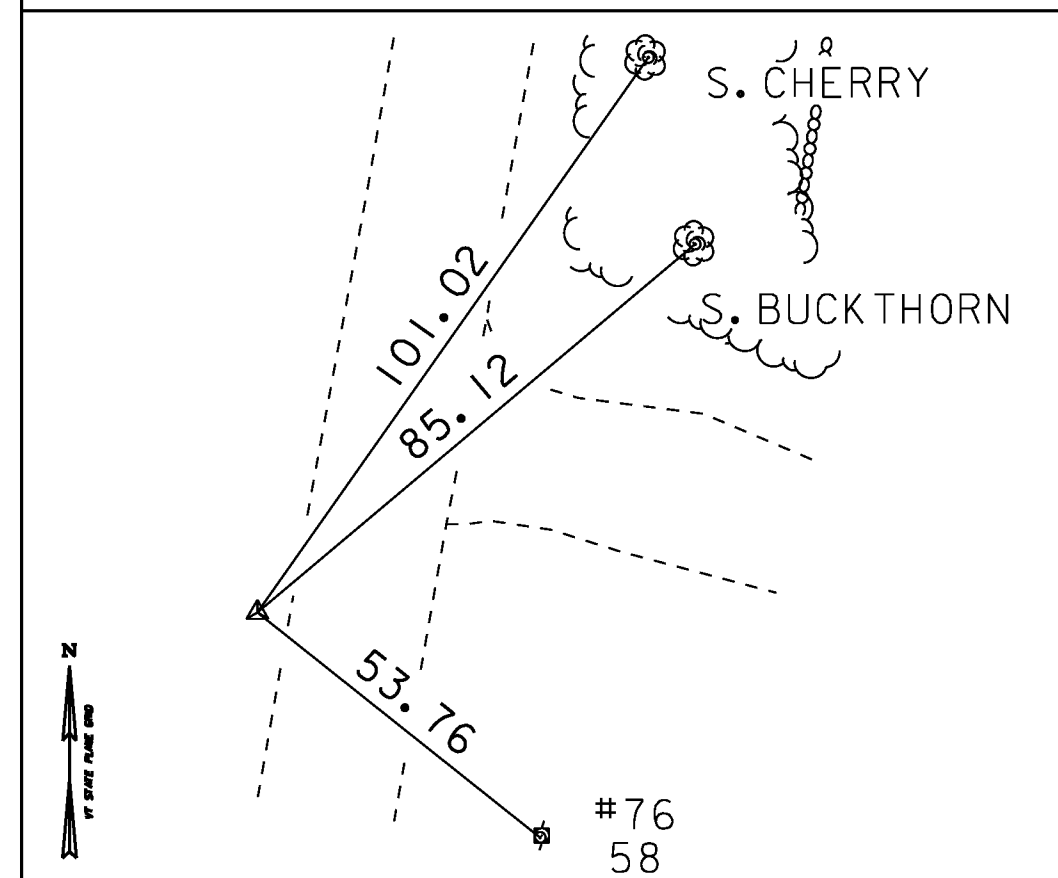
HVCTRL #3

NORTH = 827176.115  
 EAST = 1521472.496  
 ELEV. = 602.691



HVCTRL #4

NORTH = 826705.981  
 EAST = 1521357.860  
 ELEV. = 605.531



DATUM	
VERTICAL	NAVD 88
HORIZONTAL	NAD 83(07)
ADJUSTMENT	COMPASS

PROJECT NAME:	FAIRFIELD
PROJECT NUMBER:	BRF 028(25)
FILE NAME:	sl2j156tie.dgn
PROJECT LEADER:	R. YOUNG
DESIGNED BY:	R. KLINEFELTER
TIE SHEET	
PLOT DATE:	18-AUG-2014
DRAWN BY:	R. KLINEFELTER
CHECKED BY:	J. SALVATORI
SHEET	14 OF 69