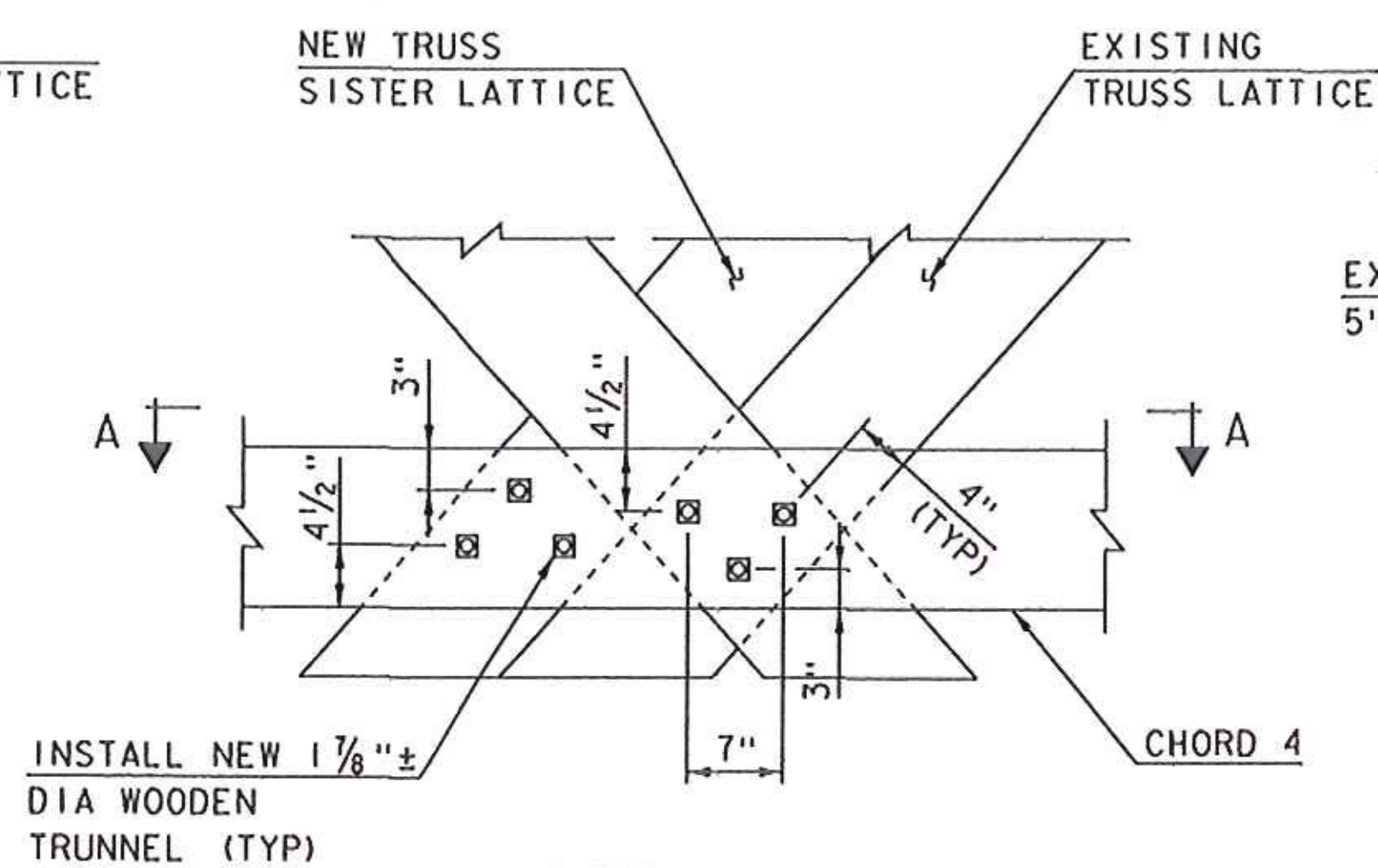
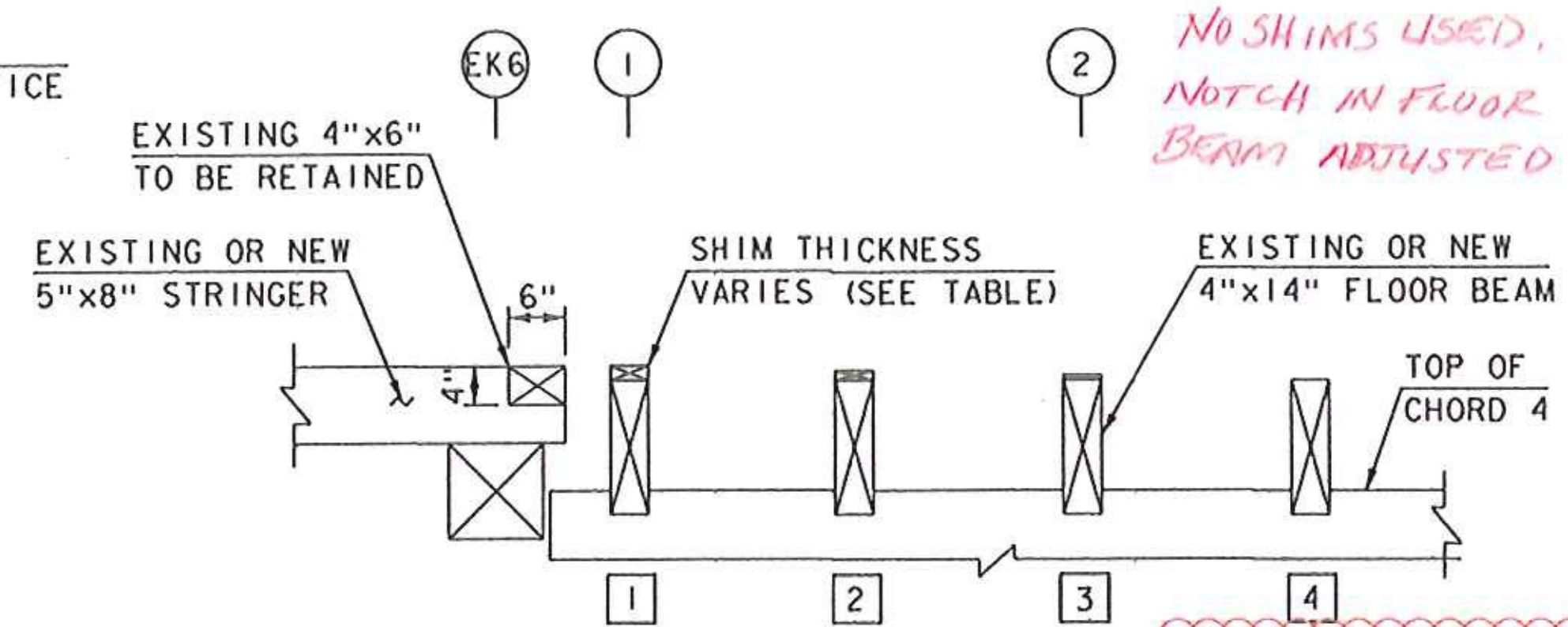


DETAIL A
SCALE: 1" = 1'-0"



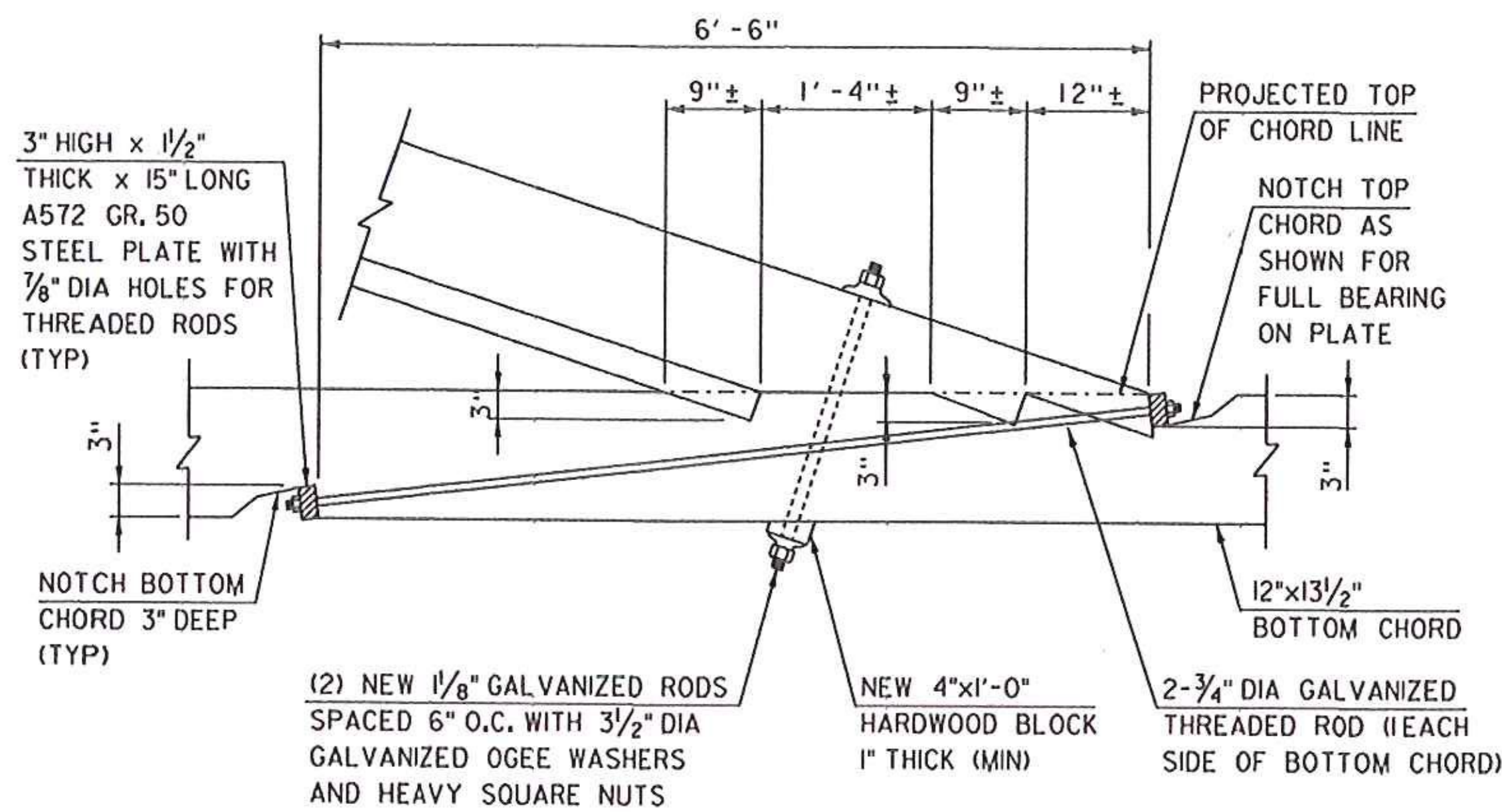
DETAIL B
SCALE: 1" = 1'-0"



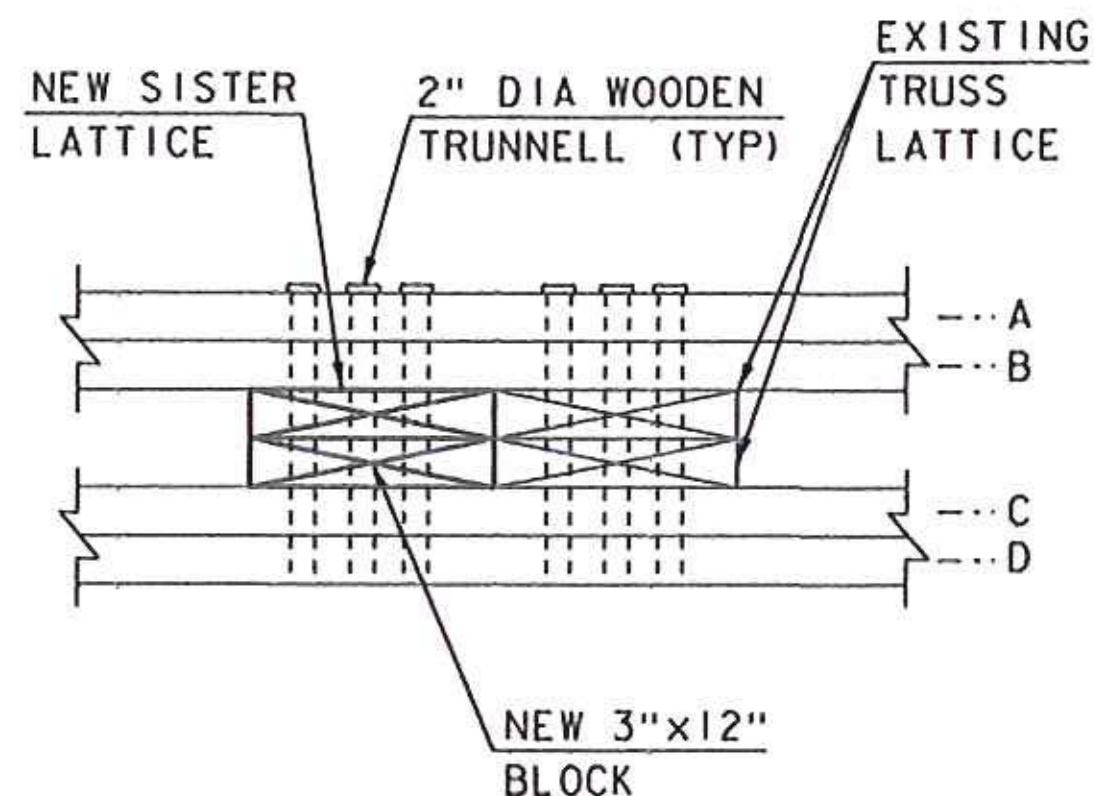
KING POST TO TOWN LATTICE DECK TRANSITION DETAIL
SCALE: 3/4" = 1'-0"

NO SHIMS USED, NOTCH IN FLOOR BEAM ADJUSTED

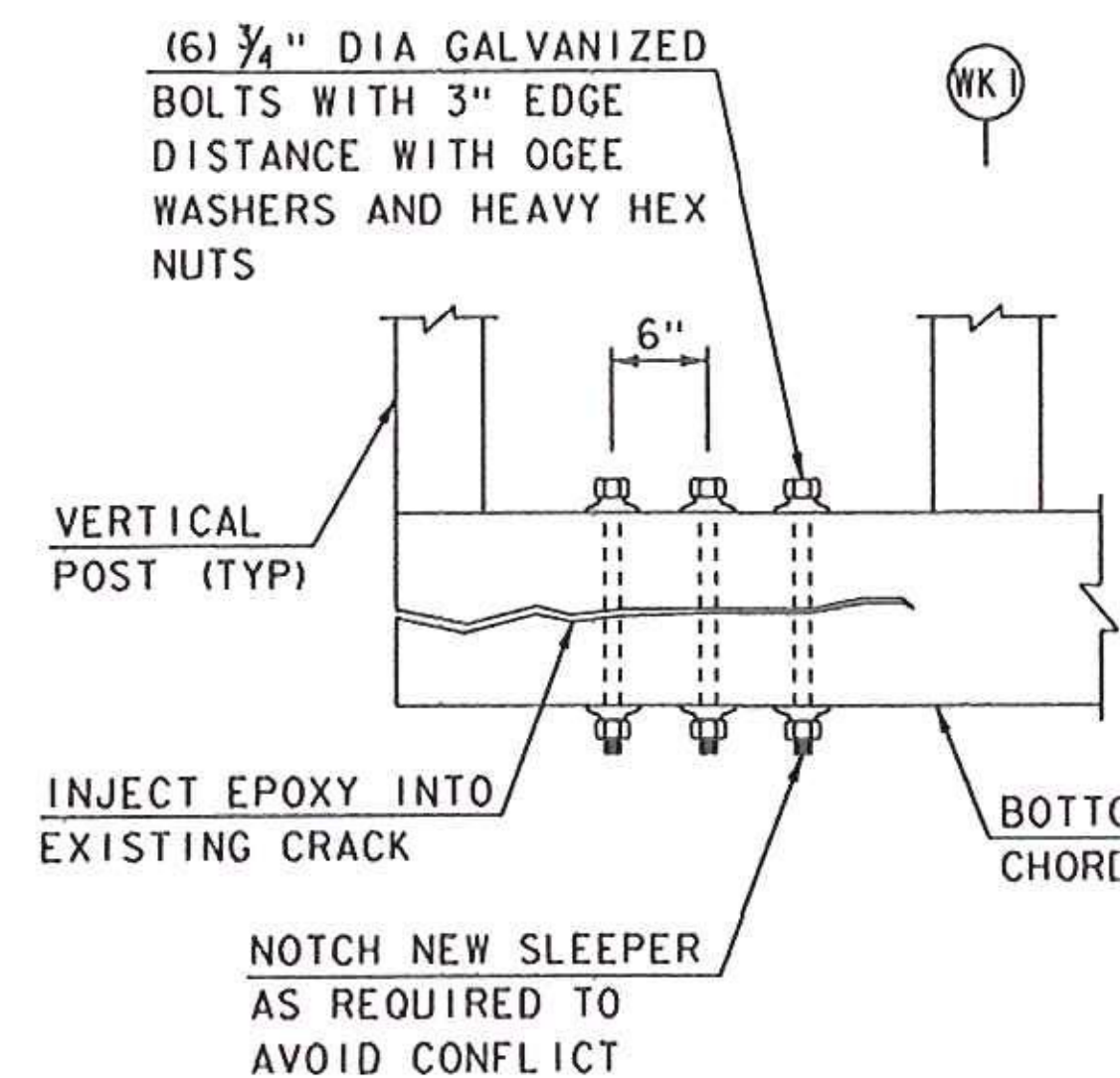
FLOOR BEAM	SHIM THICKNESS (INCHES)
1	1.5
2	1
3	0.5
4	0



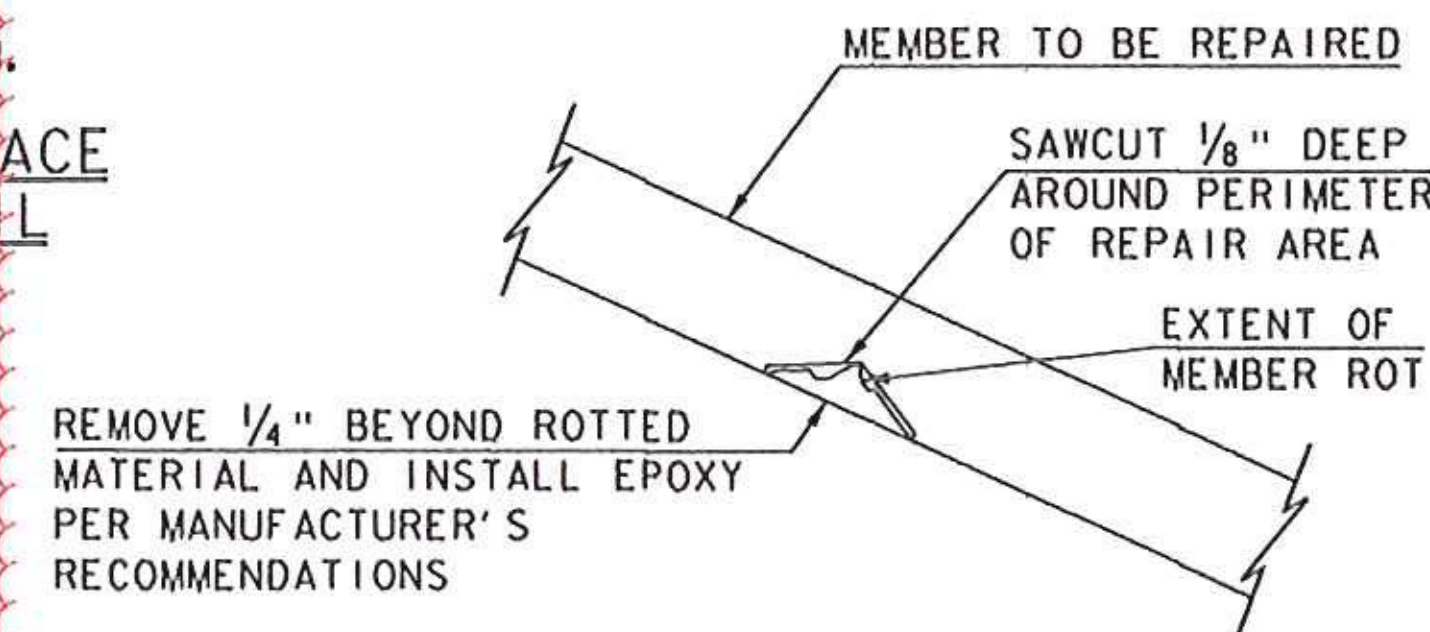
NORTH TRUSS CONNECTION DETAIL AT EKI AND EK5
SCALE: 1" = 1'-0"



SECTION A-A
SCALE: 1" = 1'-0"



NORTH KING POST TRUSS BOTTOM CHORD REPAIR DETAIL
SCALE: 1" = 1'-0"



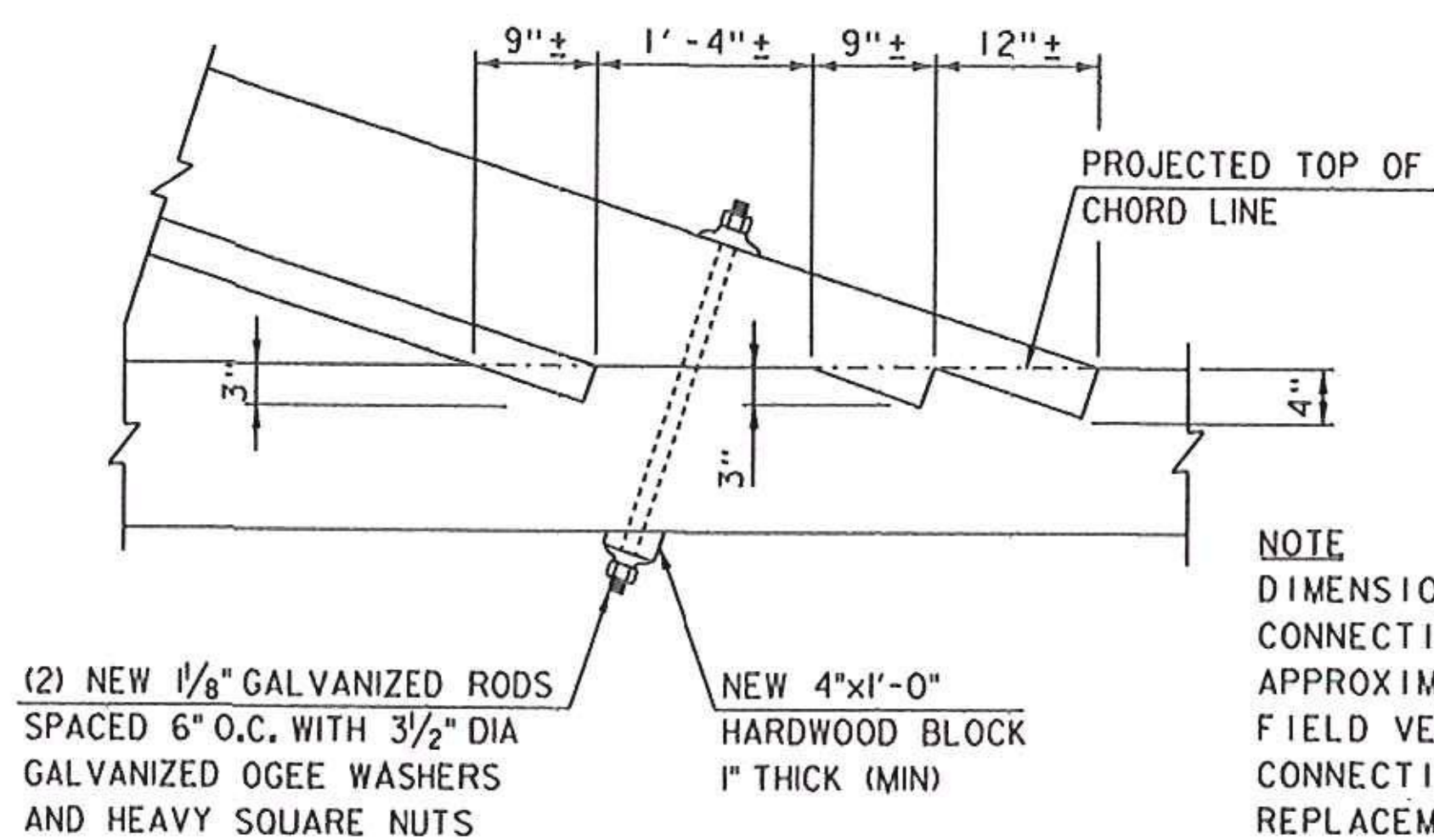
EPOXY REPAIR DETAIL
NOT TO SCALE

RECOMMENDED REPAIR SEQUENCE

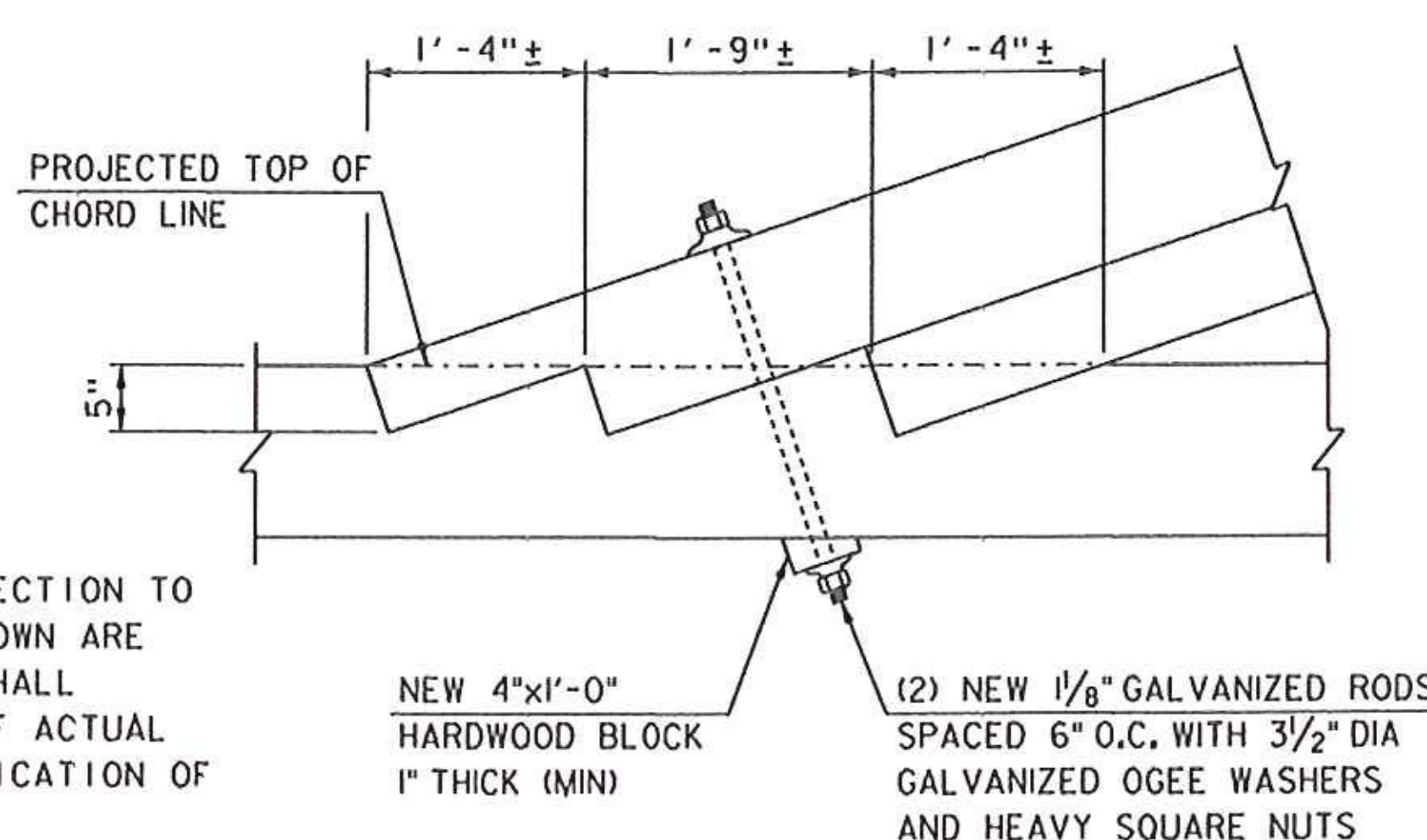
1. IDENTIFIED ROTTED MATERIAL IN LUMBER AND TIMBER MEMBERS, IF LESS THAN 1 INCH IN DEPTH, SHALL BE REPAIRED AS SHOWN ABOVE ON THE "EPOXY REPAIR DETAIL". IF ROT IS GREATER THAN 1 INCH IN DEPTH, THE ENTIRE MEMBER SHALL BE REPLACED AS DIRECTED BY THE RESIDENT ENGINEER.
2. REMOVE ALL ROTTED MATERIAL TO A MINIMUM OF 1/4" BEYOND EXTENT OF ROT. SAWCUT 1/8" DEEP AROUND PERIMETER OF REPAIR AREA.
3. CLEAN EXISTING MEMBER OF ALL DIRT, SAWDUST, ETC. AND PREPARE SURFACE PER MANUFACTURER'S RECOMMENDATIONS.
4. INSTALL/INJECT APPROVED EPOXY REPAIR MATERIAL PER MANUFACTURER'S RECOMMENDATIONS, (PAID UNDER ITEM 900.620, SPECIAL PROVISION (WOOD/EPOXY REPAIRS)). COLOR OF REPAIR MATERIAL TO MATCH EXISTING WOOD. A COMPLETED TEST SECTION SHALL BE MADE FOR APPROVAL BY THE RESIDENT ENGINEER.
5. INSTALL TWO GALVANIZED LAG SCREWS INTO EXISTING SPLIT THROUGH REPAIR MATERIAL (IF REQUIRED). SIZE OF LAG SCREWS TO BE DETERMINED BY THE RESIDENT ENGINEER.

NOTE

1. SEE SHEET 41 FOR NOTES PERTAINING TO THIS SHEET.



EAST KINGPOST SPAN CONNECTION DETAIL
SCALE: 1" = 1'-0"



WEST KINGPOST SPAN CONNECTION DETAIL
SCALE: 1" = 1'-0"

Hoyle, Tanner & Associates, Inc.

HTA PROJECT	MODEL
904225	904225Detail5

PROJECT NAME: TOWNSHEND
PROJECT NUMBER: STP SCTT(I)

FILE NAME: 904225Detail5.dgn
PROJECT LEADER: M.D.SARGENT
DESIGNED BY: J.C.RIPLEY
STRUCTURAL DETAILS (5 OF 5)

PLOT DATE: 7/1/2016
DRAWN BY: T.A.GELINAS
CHECKED BY: S.T.JAMES
SHEET 45 OF 60