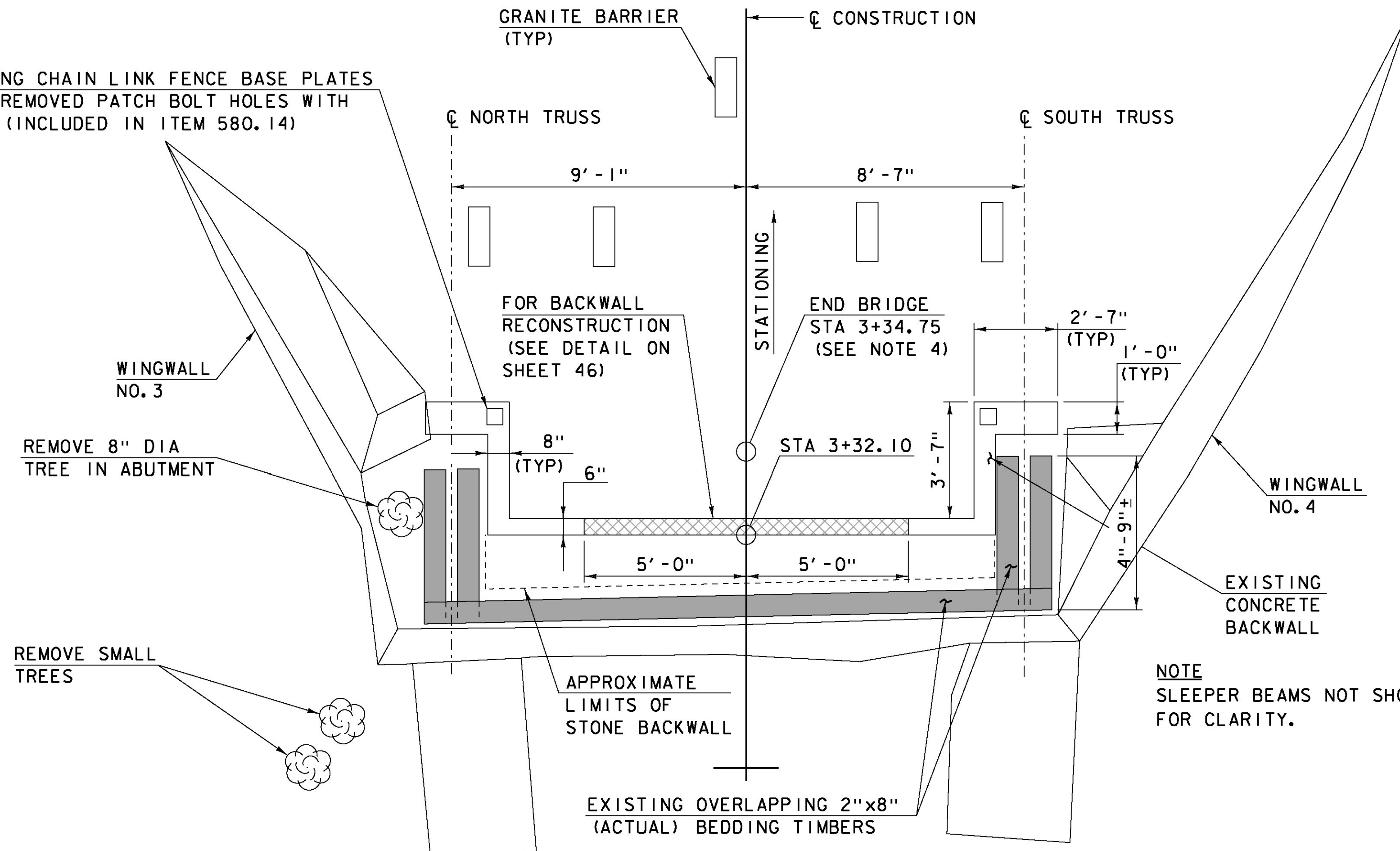


EXISTING CHAIN LINK FENCE BASE PLATES TO BE REMOVED PATCH BOLT HOLES WITH GROUT (INCLUDED IN ITEM 580.14)



NOTES

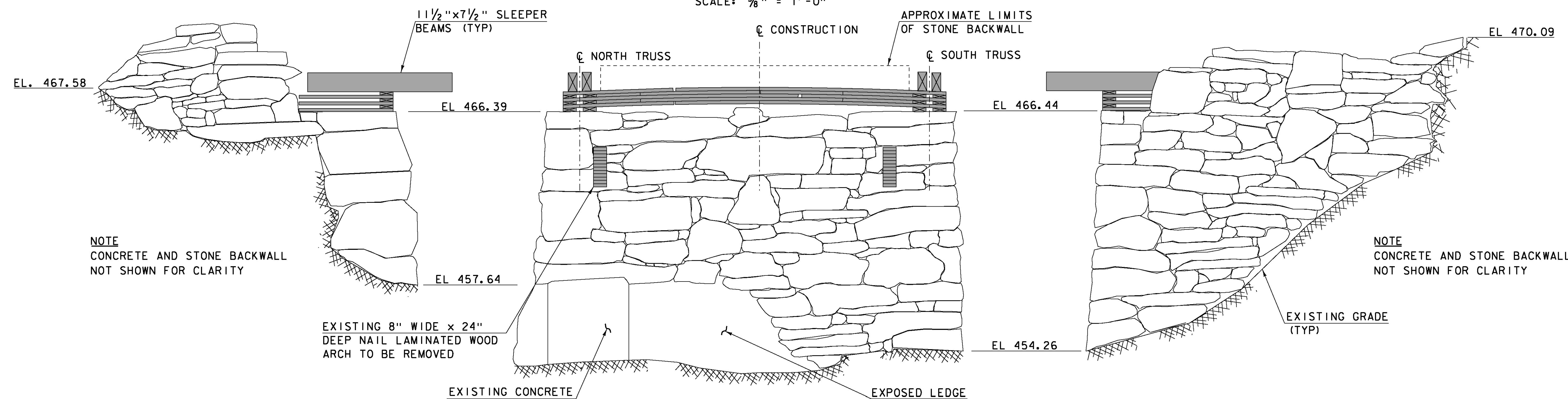
1. REMOVE AND RESET GRANITE BARRIERS AS WELL AS REMOVE, REHABILITATE AND RESET HISTORIC MARKER AT EAST END OF BRIDGE AS REQUIRED TO COMPLETE THE WORK. PAYMENT WILL BE MADE UNDER ITEM 502.10, SHORING SUPERSTRUCTURE. (SEE DETAIL ON SHEET 50).
2. FOR NEW BEDDING TIMBERS, SEE SHEET 48. FOR NEW CONCRETE PEDESTALS, SEE SHEET 46.
3. ALL EXISTING STONE FACES INCLUDING WINGWALLS NO. 3 AND NO. 4 SHALL BE REPAIRED (SEE DETAILS ON SHEET 46). ALL COSTS PAID UNDER ITEM 602.40, REPAIRING STONE MASONRY.
4. END BRIDGE STATION IS SET AT THE FACE OF PORTAL SIDING.

LEGEND

- PREDETERMINED MEMBER TO BE REMOVED
- LIMITS OF REPAIR OF CONCRETE SUBSTRUCTURE SURFACE, CLASS II

NOTE
SLEEPER BEAMS NOT SHOWN FOR CLARITY.

PLAN
SCALE: 3/8" = 1'-0"



NOTE
CONCRETE AND STONE BACKWALL NOT SHOWN FOR CLARITY

NOTE
CONCRETE AND STONE BACKWALL NOT SHOWN FOR CLARITY

WINGWALL NO. 3
SCALE: 3/8" = 1'-0"

ELEVATION
SCALE: 3/8" = 1'-0"

WINGWALL NO. 4
SCALE: 3/8" = 1'-0"



PROJECT NAME:	TOWNSHEND	PLOT DATE:	8/13/2015
PROJECT NUMBER:	STP SCTT(I)	DRAWN BY:	T.A.GELINAS
FILE NAME:	904225sub2.dgn	CHECKED BY:	S.T.JAMES
PROJECT LEADER:	M.D.SARGENT		
DESIGNED BY:	J.C.RIPLEY		
ABUT NO. 2 PLAN & ELEVATION			
			SHEET 37 OF 60

8/13/2015 1:09:42 PM C:\Users\hoyle\OneDrive\904225sub2.dgn