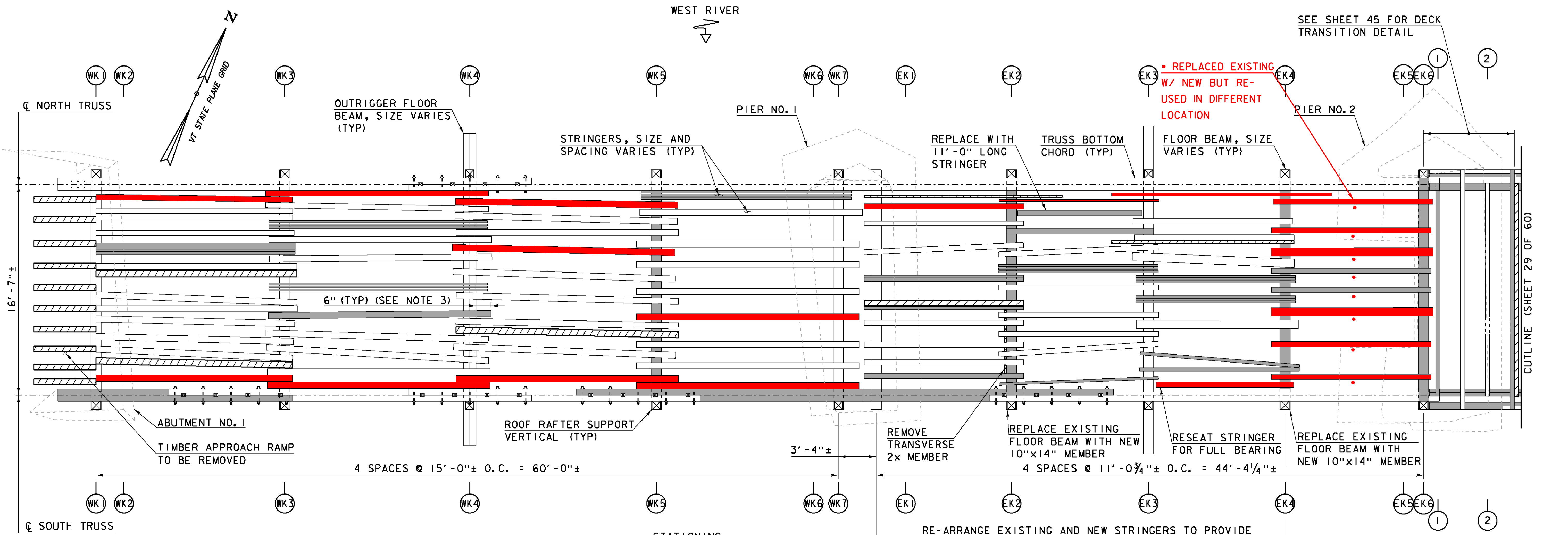


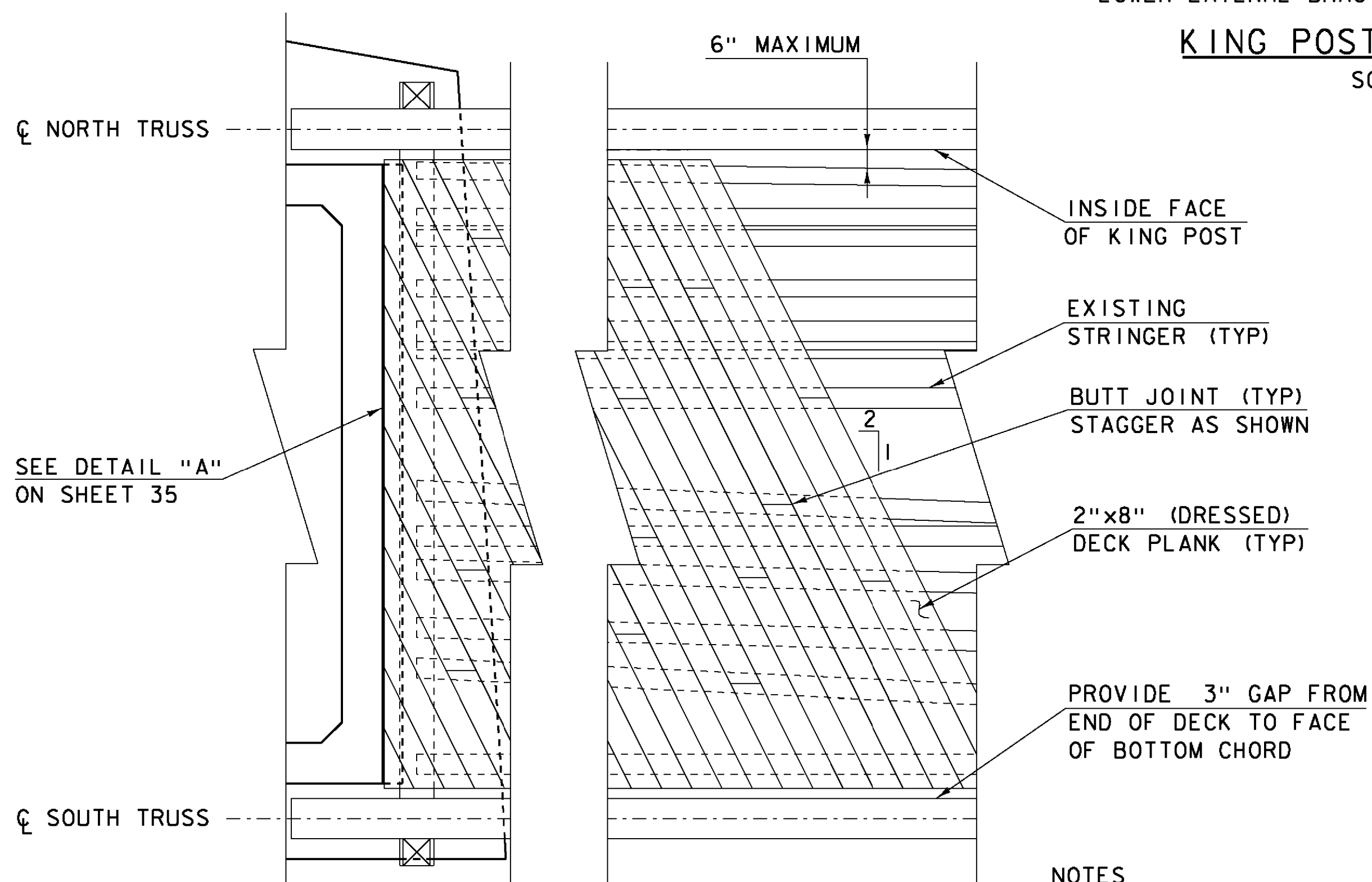
WEST RIVER



NOTE
LOWER LATERAL BRACING AND DECKING NOT SHOWN FOR CLARITY.

KING POST FLOOR FRAMING PLAN

SCALE: 1/4" = 1'-0"



KING POST DECK DETAIL

SCALE: 3/8" = 1'-0"

- NOTES
1. DECK PARTIALLY SHOWN FOR CLARITY.
 2. SEE SHEET 44 FOR DECK PLANK ATTACHMENT DETAILS AND DECK SPIKE DETAILS.

LEGEND

- PREDETERMINED MEMBER TO BE REPLACED
- PREDETERMINED MEMBER TO BE REMOVED
- TRUSS NODE LOCATION

NOTES

1. ALL EXISTING KING POST TRUSS STRINGERS SHOWN TO BE REPLACED, WHETHER A SINGLE, DOUBLE OR TRIPLE LAMINATED MEMBER, SHALL BE REPLACED WITH A NEW 5"x8" STRINGER.
2. NEW AND REMAINING STRINGERS BETWEEN NODES EK1 AND EK4 SHALL BE EQUALLY SPACED NOT TO EXCEED 2'-0" ON CENTER AND NOT MORE THAN 6" FROM FACE OF CHORD TO FACE OF STRINGER, COSTS INCLUDED UNDER ITEM 900.645, SPECIAL PROVISION (REHABILITATING COVERED BRIDGE SUPERSTRUCTURE).
3. PROVIDE 6" OVERHANG FOR NEW STRINGERS AT EACH END.

PROJECT NAME: TOWNSHEND
PROJECT NUMBER: STP SCTT(I)

Hoyle, Tanner & Associates, Inc.

HTA PROJECT	MODEL
904225	904225sup13

FILE NAME: 904225sup13.dgn
PROJECT LEADER: M.D.SARGENT
DESIGNED BY: J.C.RIPLEY
FLOOR FRAMING PLAN & DETAILS (1 OF 3) SHEET 28 OF 60

PLOT DATE: 8/13/2015
DRAWN BY: T.A.GELINAS
CHECKED BY: S.T.JAMES