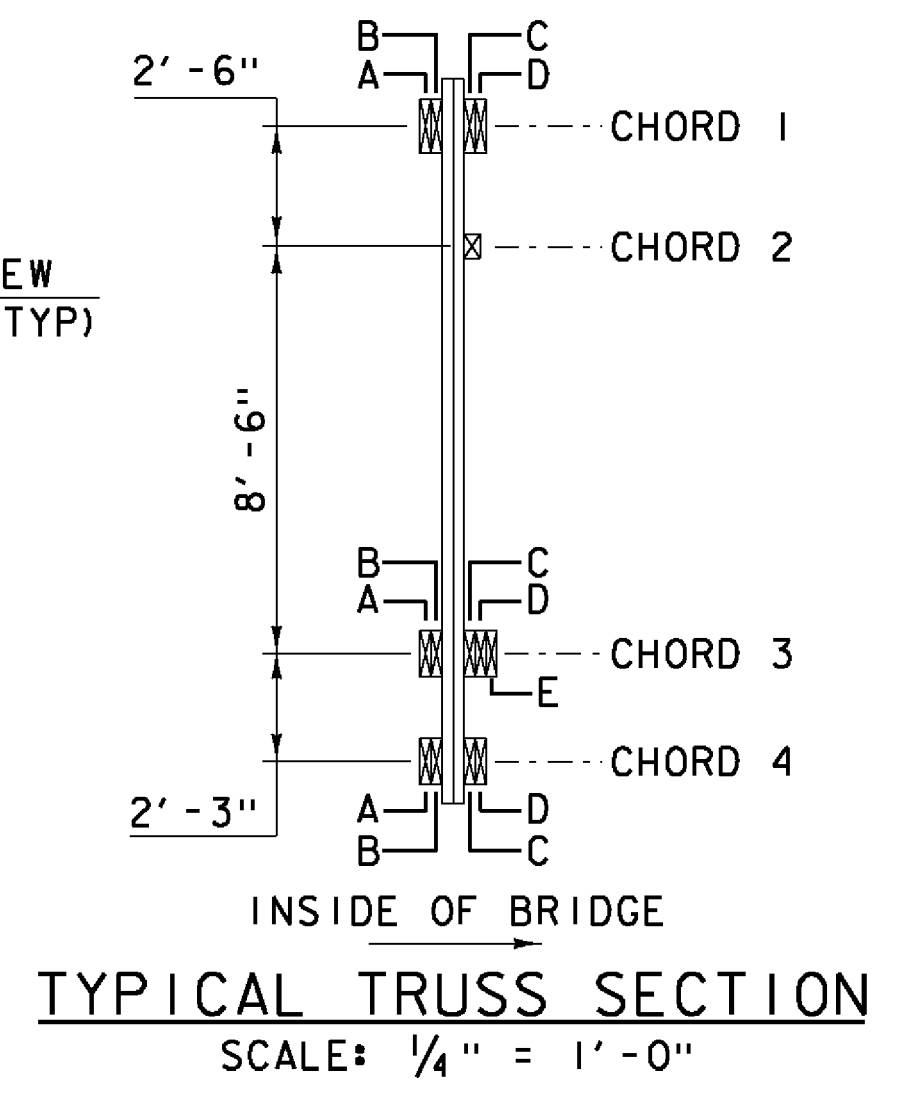


**NOTES**  
 1. SEE SHEET 23 FOR NOTES THAT APPLY TO THIS SHEET.



- LEGEND**
- PREDETERMINED MEMBER TO BE REPLACED
  - PREDETERMINED MEMBER TO BE REMOVED
  - XX TRUSS NODE LOCATION
  - EJ EXISTING CHORD JOINT
  - NJ NEW CHORD JOINT
  - \* DENOTES SPLIT IN LATTICE MEMBER TO BE REPAIRED (SEE DETAILS ON SHEET 42)
  - B EXISTING THROUGH BOLT (SEE DETAIL ON SHEET 42)

PROJECT NAME: TOWNSHEND  
 PROJECT NUMBER: STP SCTT(I)  
 FILE NAME: 904225sup9.dgn  
 PROJECT LEADER: M.D.SARGENT  
 DESIGNED BY: J.C.RIPLEY  
**NORTH TRUSS ELEVATION (3 OF 3)**  
 PLOT DATE: 8/13/2015  
 DRAWN BY: T.A.GELINAS  
 CHECKED BY: S.T.JAMES  
 SHEET 24 OF 60

**Hoyle, Tanner & Associates, Inc.**

HTA PROJECT	MODEL
904225	904225sup9

8/13/2015 10:04:25 AM C:\Users\jcr\OneDrive\Documents\904225sup9.dgn