

GPS/NGS CONTROL POINTS

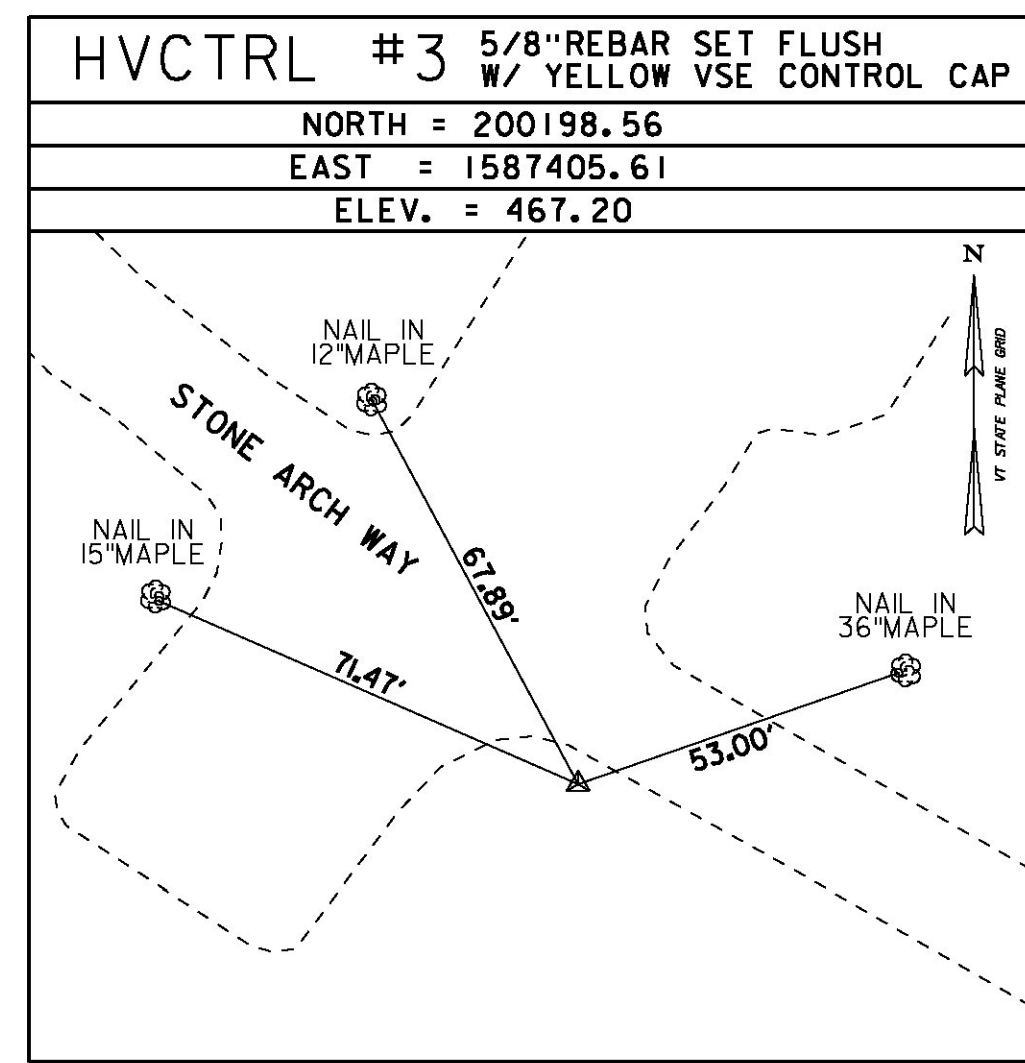
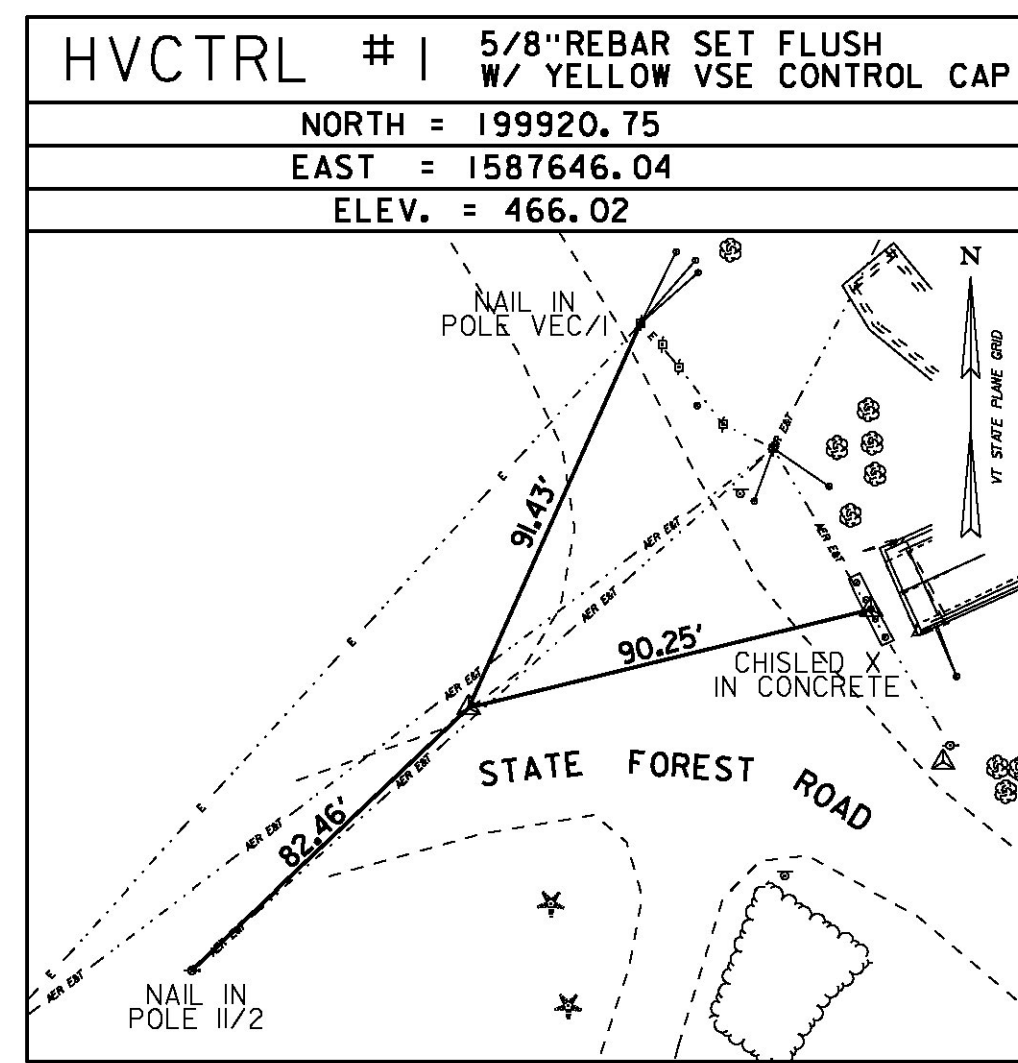
**DUMMERSTON VT CORS ARP**

PID DJ8953  
 N = 152472.46  
 E = 1631008.46  
 ELLIP HEIGHT = 413.23

STATION IS A GPS CONTINUOUSLY OPERATING REFERENCE STATION. STATION IS THE ANTENNA REFERENCE POINT OF THE GPS ANTENNA. LOCATED AT THE DUMMERSTON VERMONT DISTRICT 2 GARAGE, THE MONUMENT IS ATTACHED TO THE TOP FLANGE OF OF A (W 12X26) STEEL BEAM WHICH IS PART OF THE ROOF STRUCTURE FOR A TWO STORY STEEL FRAMED WOOD SIDED BUILDING WITH A 5 FT CONCRETE FOUNDATION BUILT IN 1986. THE MAST IS A 0.5 INCH DIA GALV PIPE THAT IS 108 INCHES LONG. THE MAST IS FITTED WITH A 5.5 X 5.5 X 1 INCH BASE PLATE THAT IS WELDED TO THE BOTOM OF THE MAST. THE BASE PLATE IS DRILLED AND TAPPED WITH (4) 3/8 INCH HOLES AND IS SECURED TO THE FLANGE OF THE STEEL BEAM WITH 4 3/8 INCH SS BOLTS. THE MAST PROJECTS THROUGH THE ROOF STRUCTURE, AND HAS BEEN WEATHER PROOFED.

TRAVERSE TIES

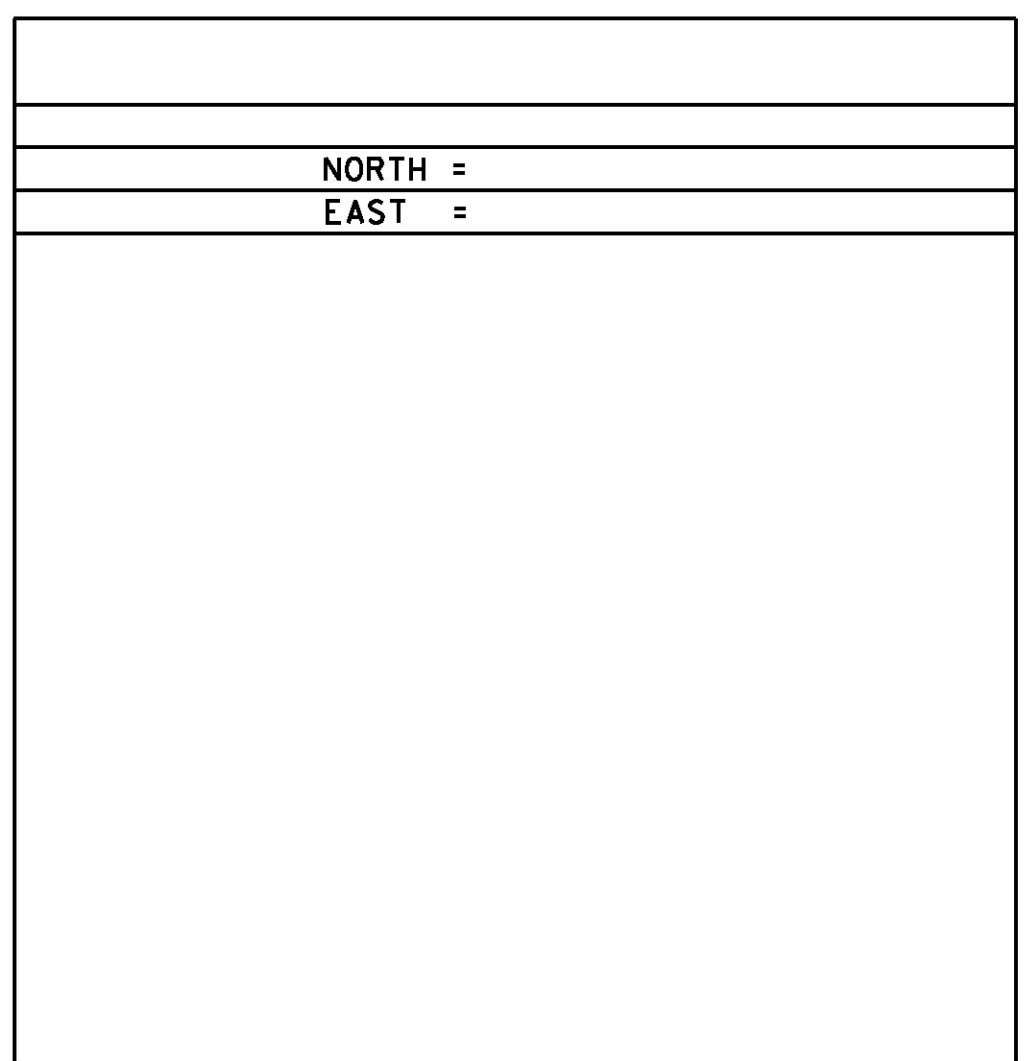
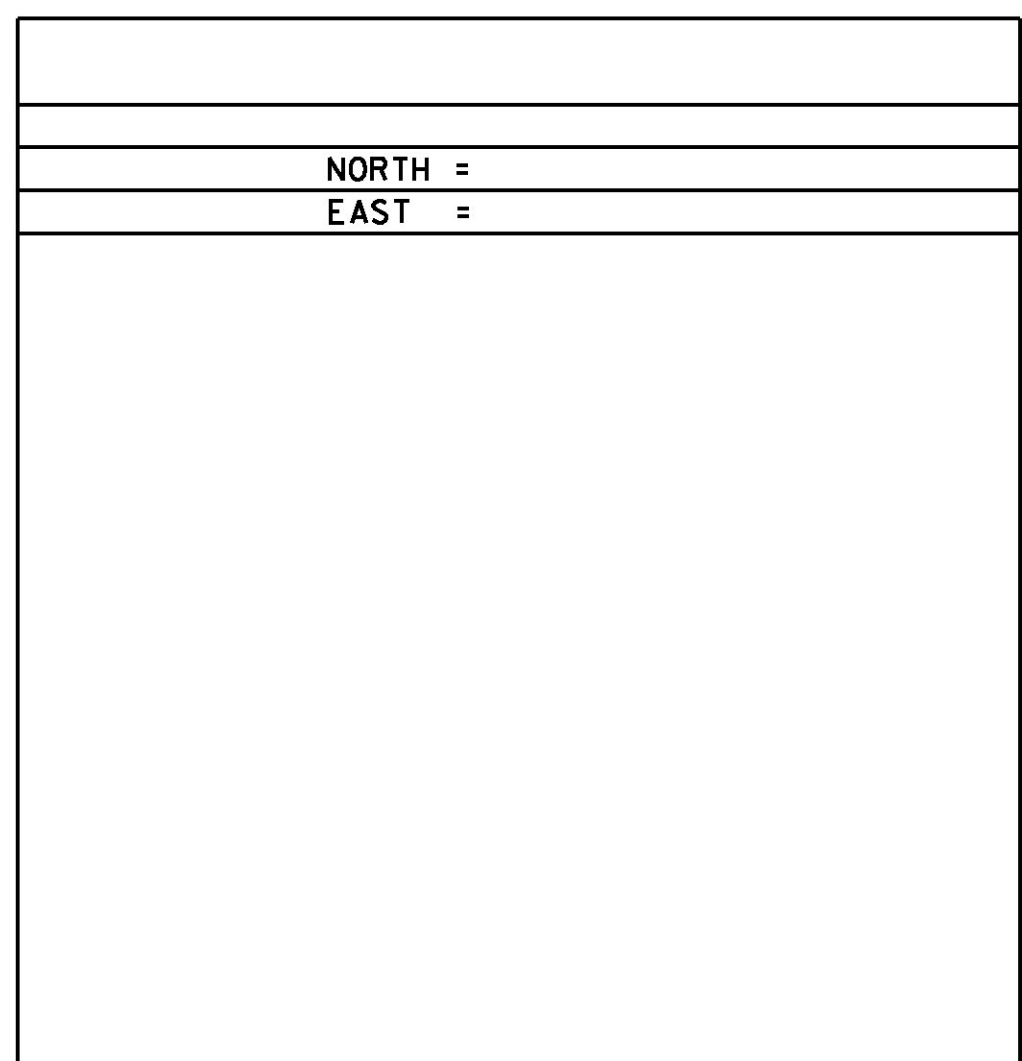
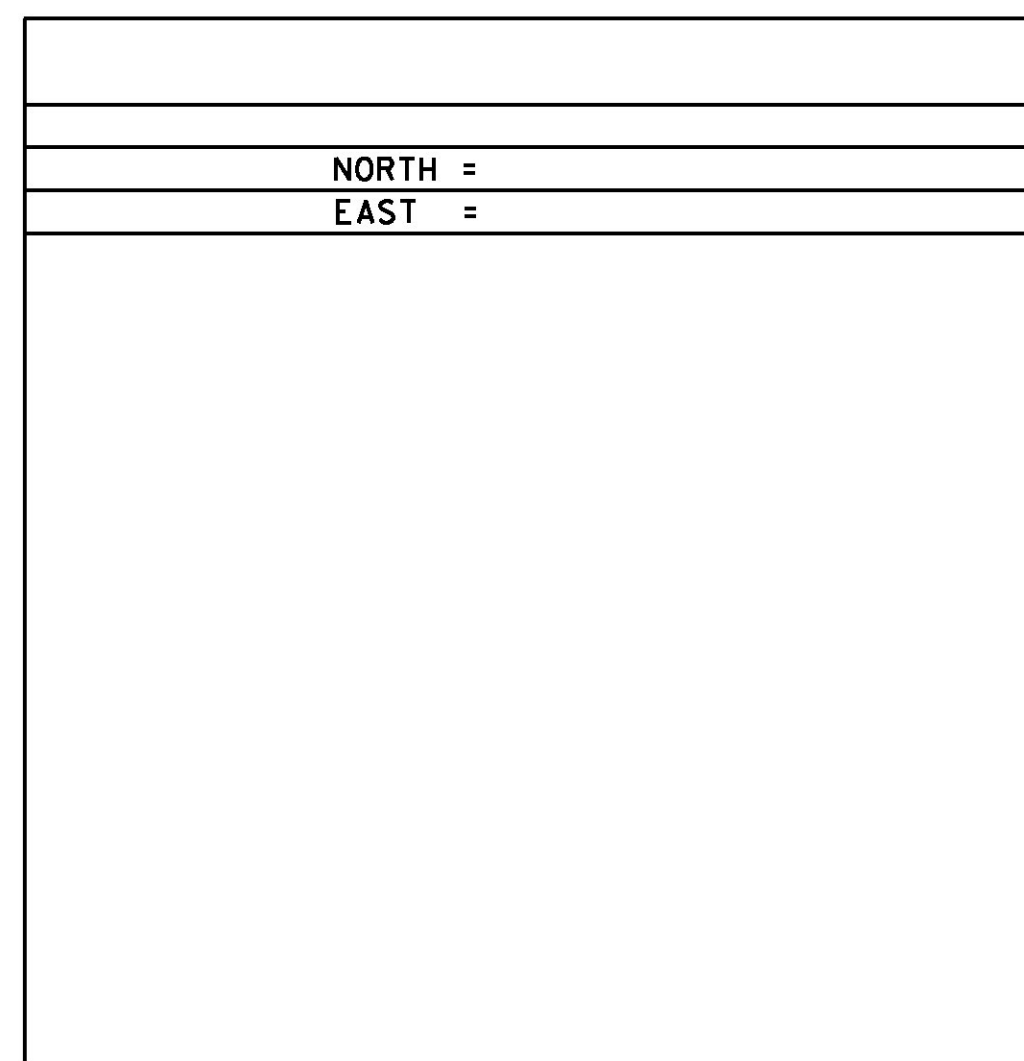
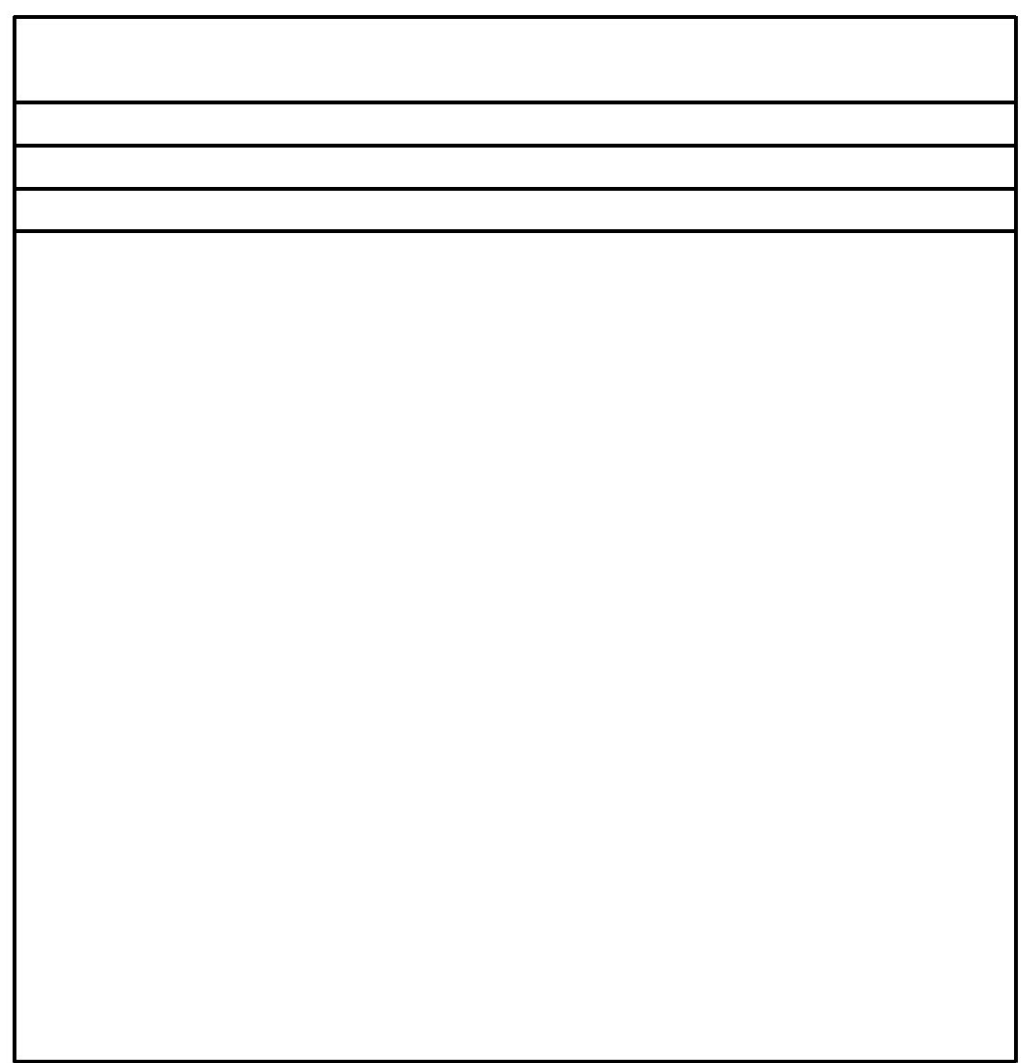
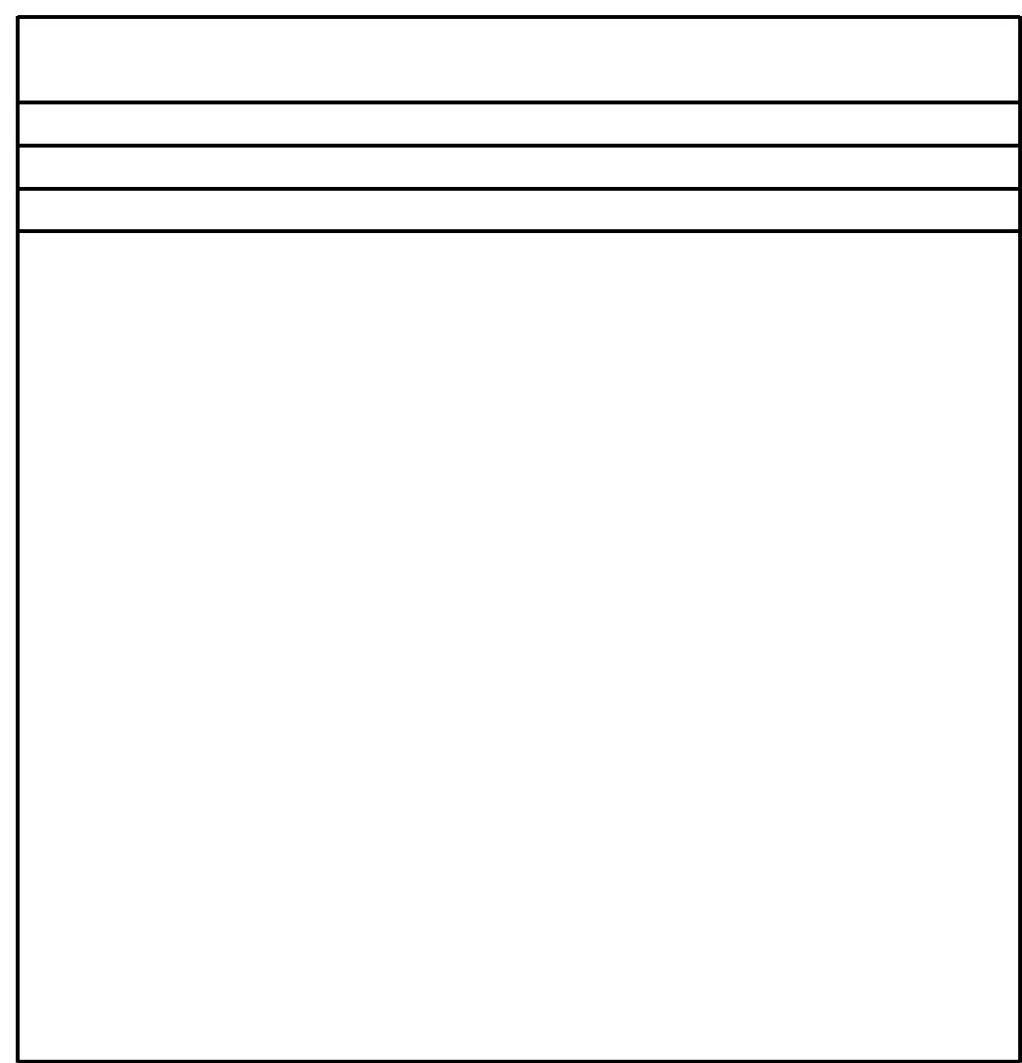
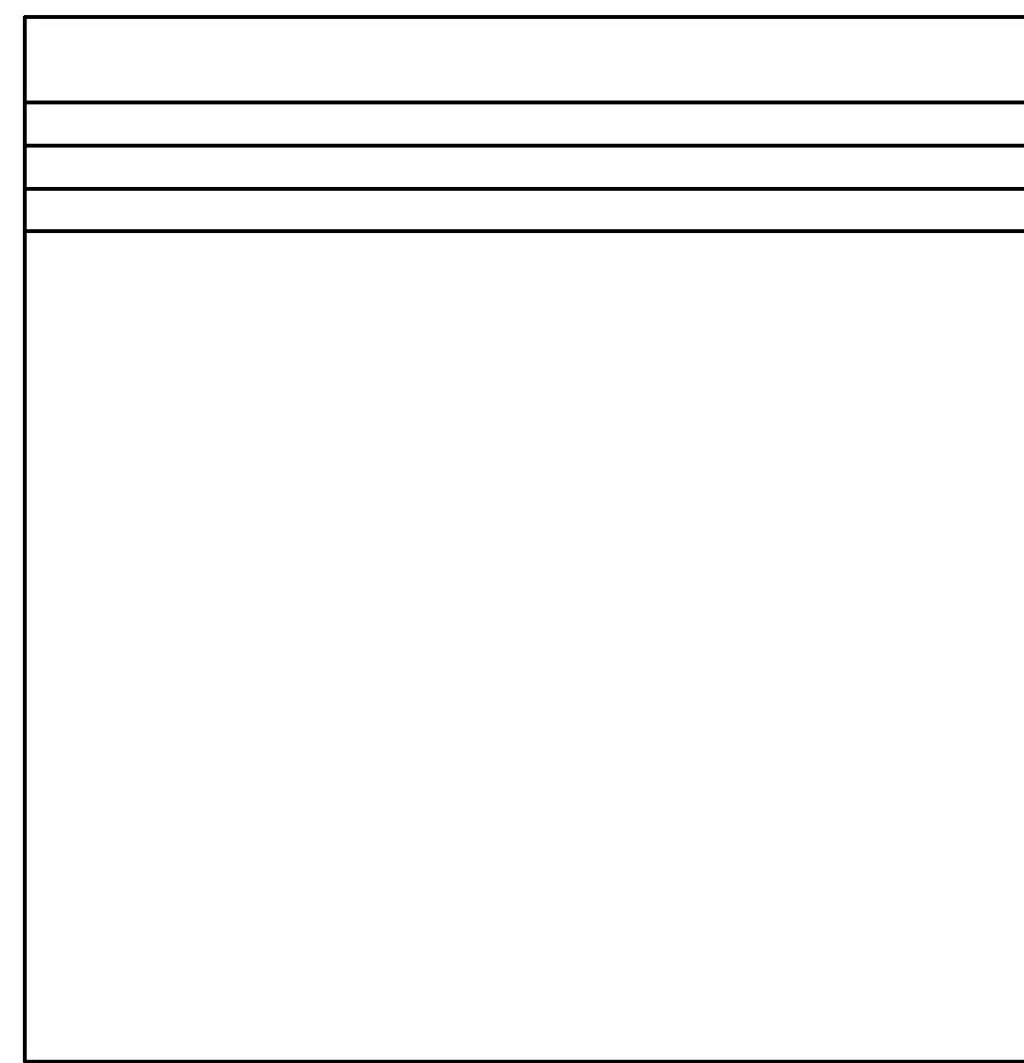
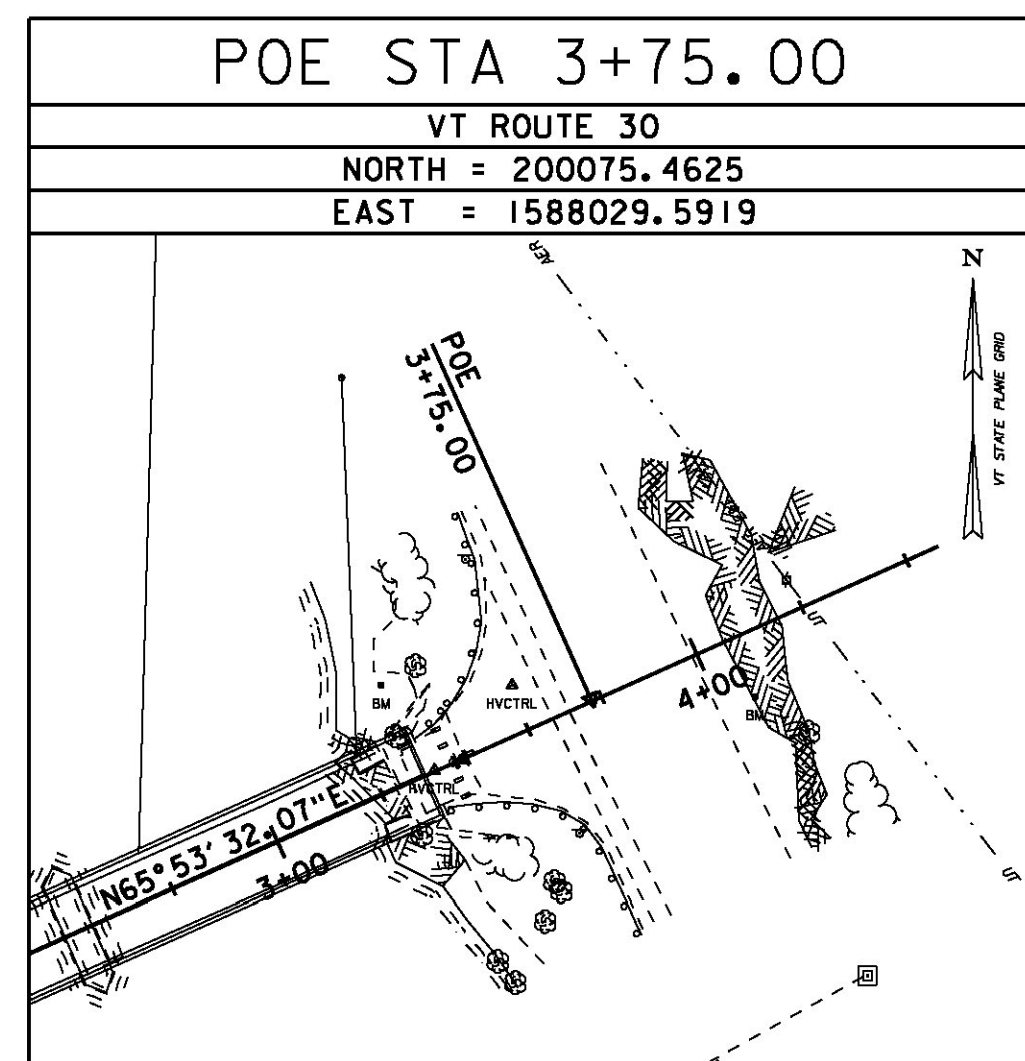
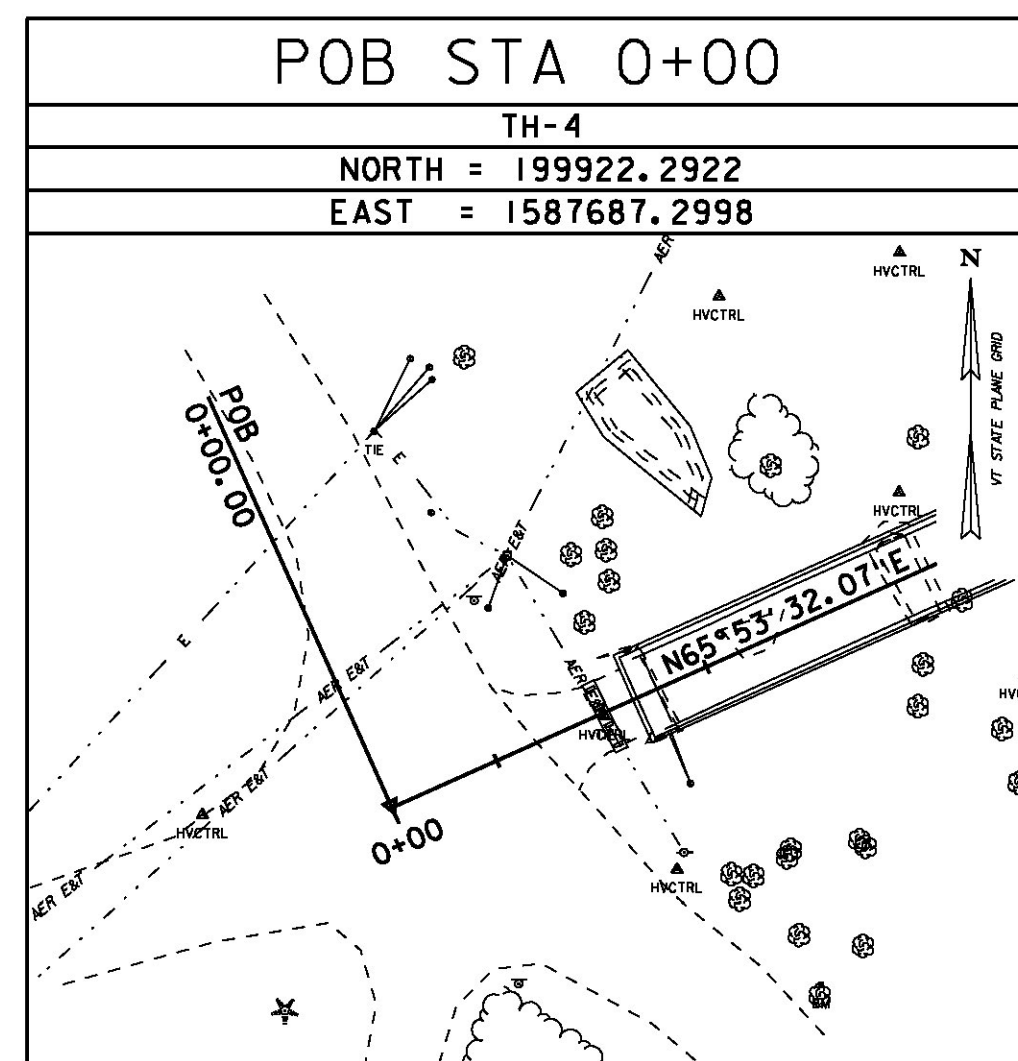
WORK COMPLETED BY VSE



• MAIN TRAVERSE COMPLETED: APRIL 25, 2012 BY VSE, M. YEFCHAK-PC, M. BACKMAN

ALIGNMENT TIES

WORK COMPLETED BY HOYLE, TANNER



DATUM	
VERTICAL	NAVD 88(GEOID09) FT
HORIZONTAL	NAD 83(CORS) sFT
ADJUSTMENT	LSQ



PROJECT NAME:	TOWNSHEND
PROJECT NUMBER:	STP SCTT(I)
FILE NAME:	904225TIE.dgn
PROJECT LEADER:	M.D.SARGENT
DESIGNED BY:	VSE/J.C.RIPLEY
CHECKED BY:	VSE/S.T.JAMES
<b>TRANSVERSE &amp; GEODETIC CONTROL INFO.</b>	SHEET 13 OF 60
	PLOT DATE: 8/13/2015
	DRAWN BY: VSE/P.DUSTIN

8/13/2015 1:06:42 PM s:\proj\hoyle\tanner\904225TIE.dgn