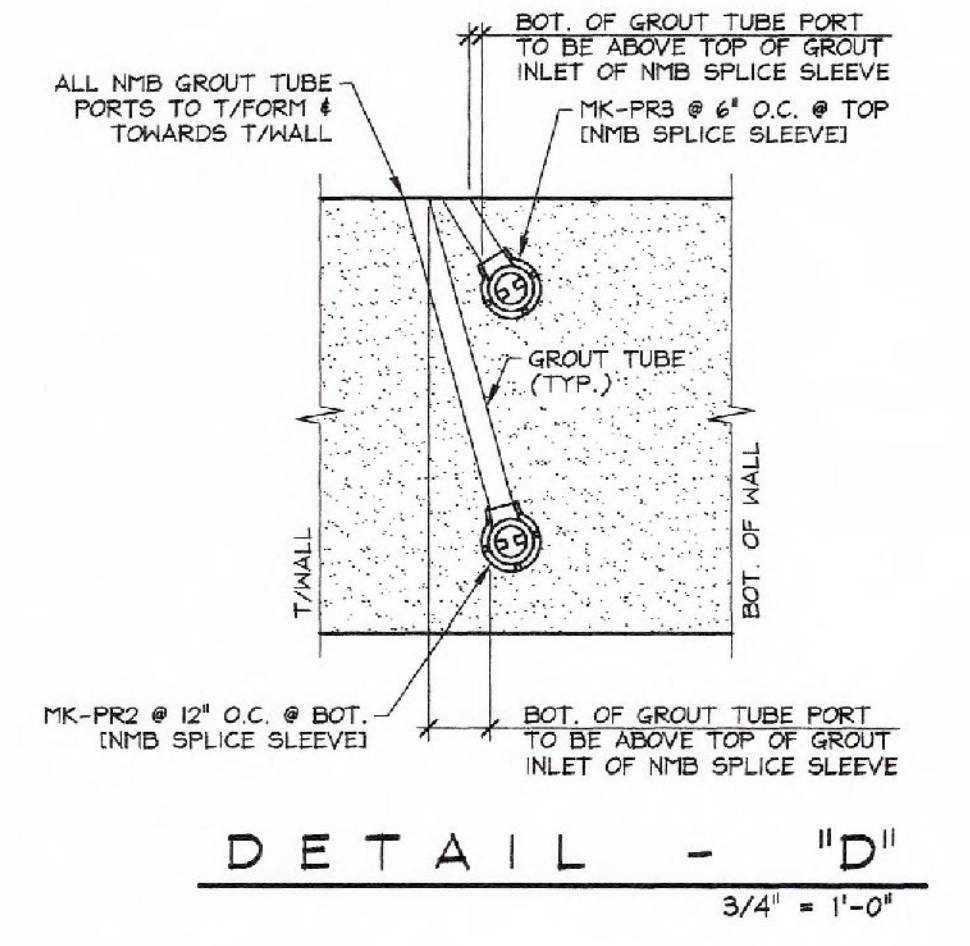
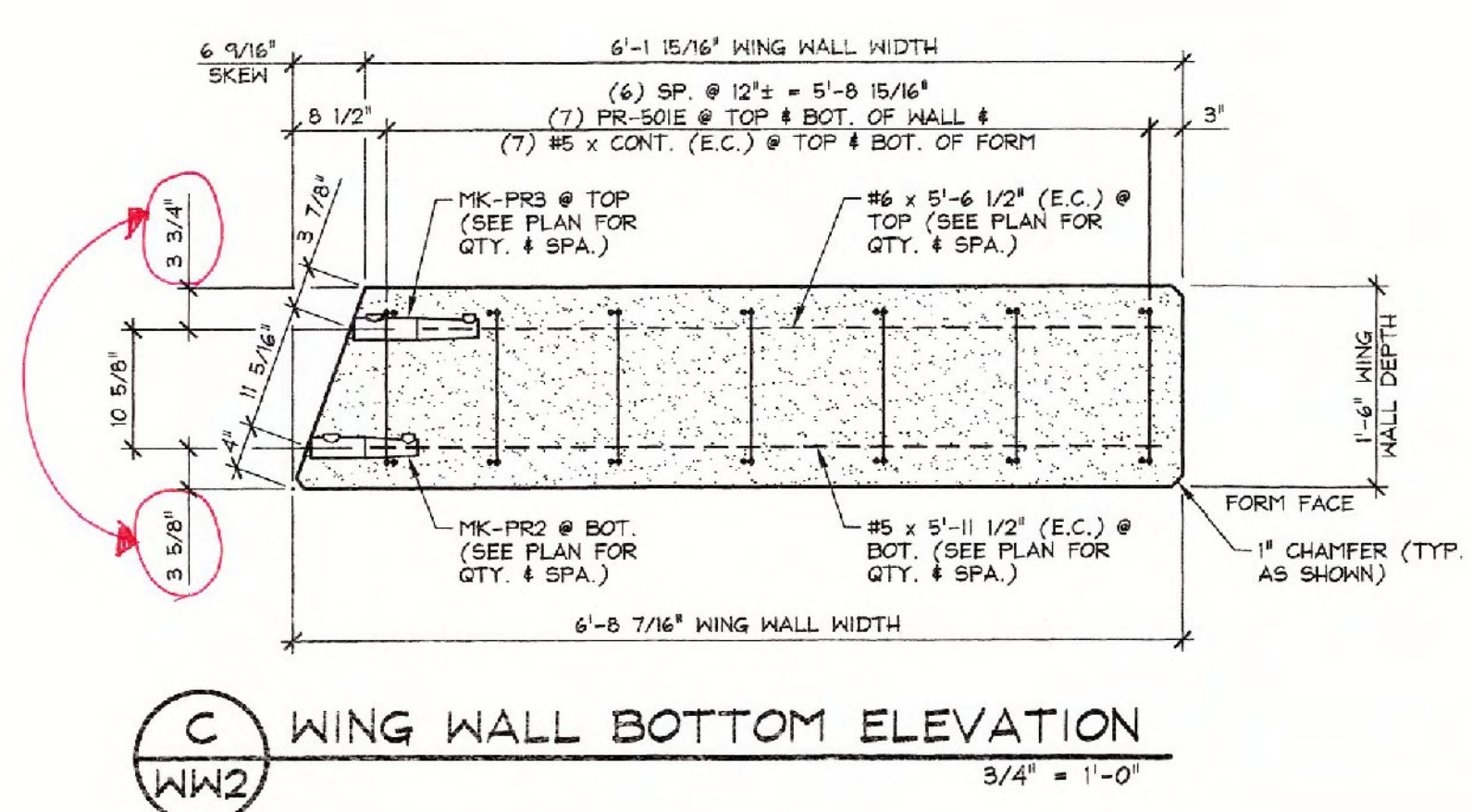
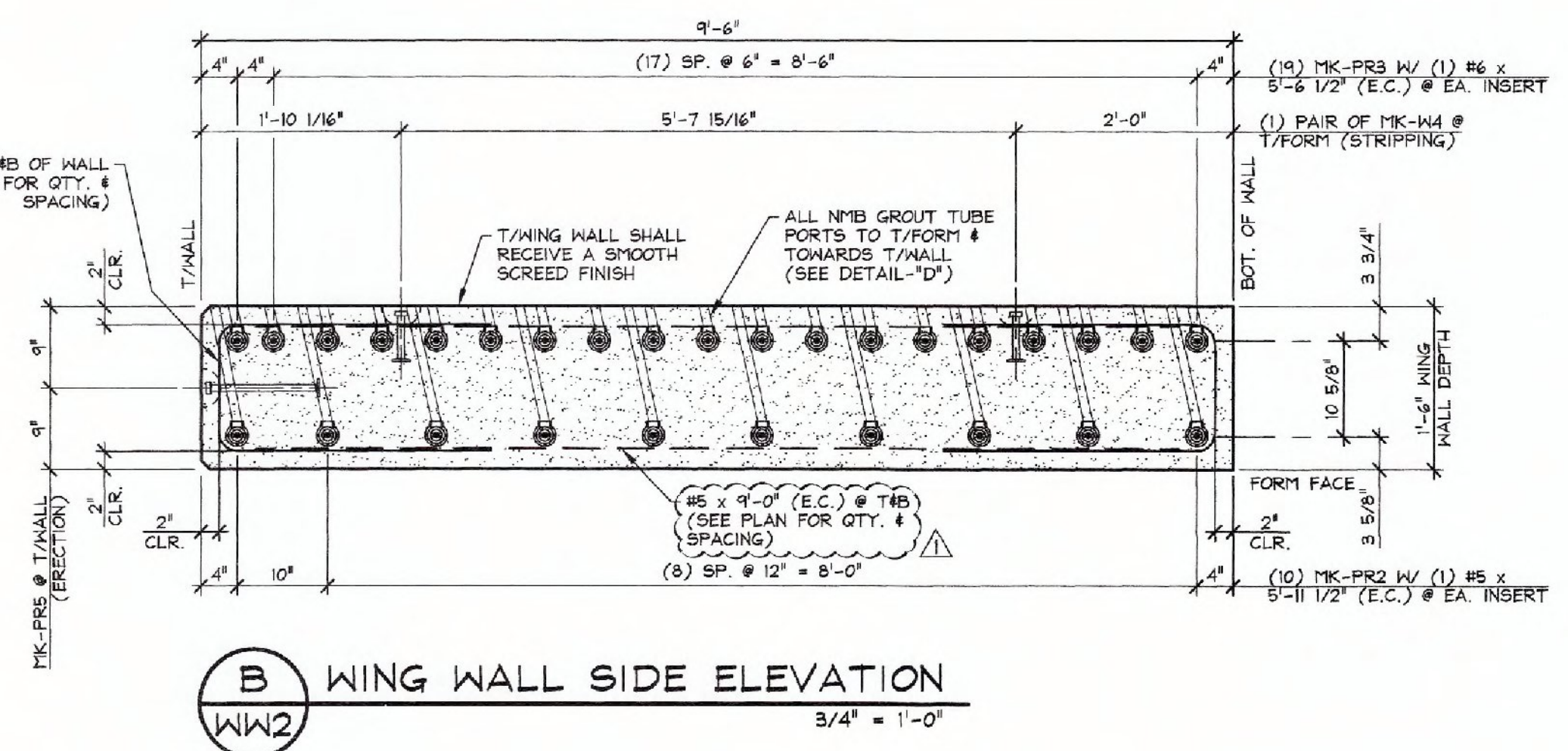
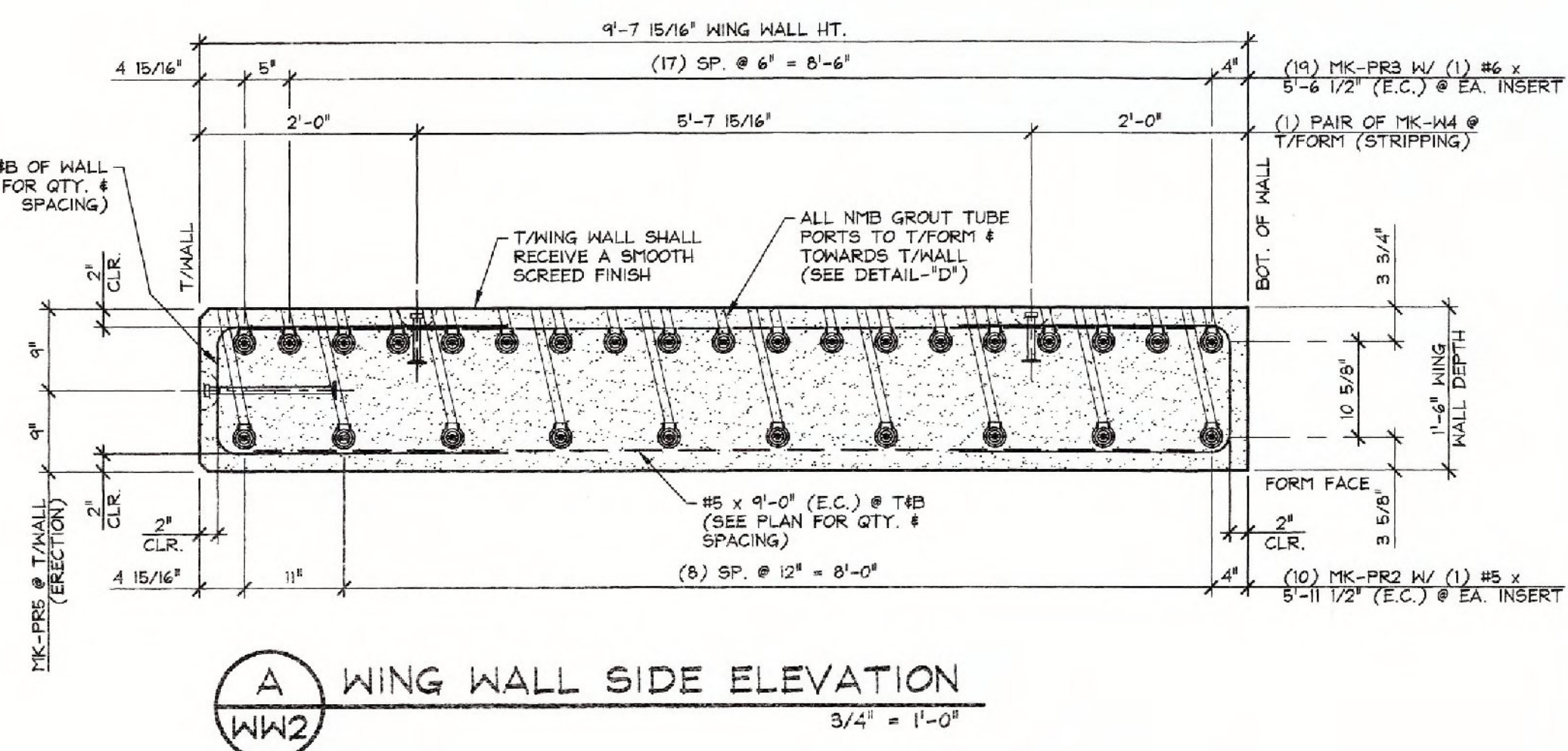
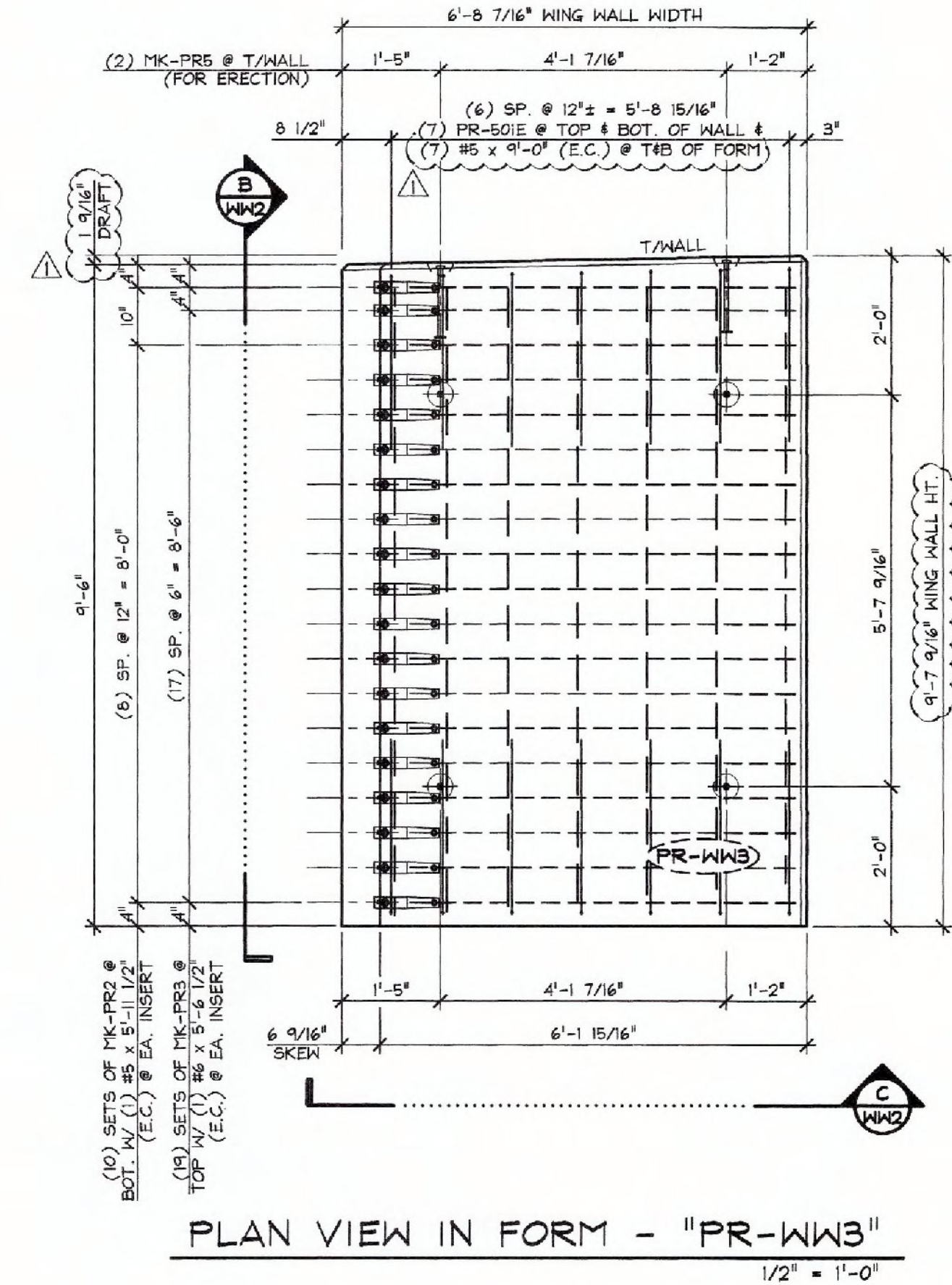
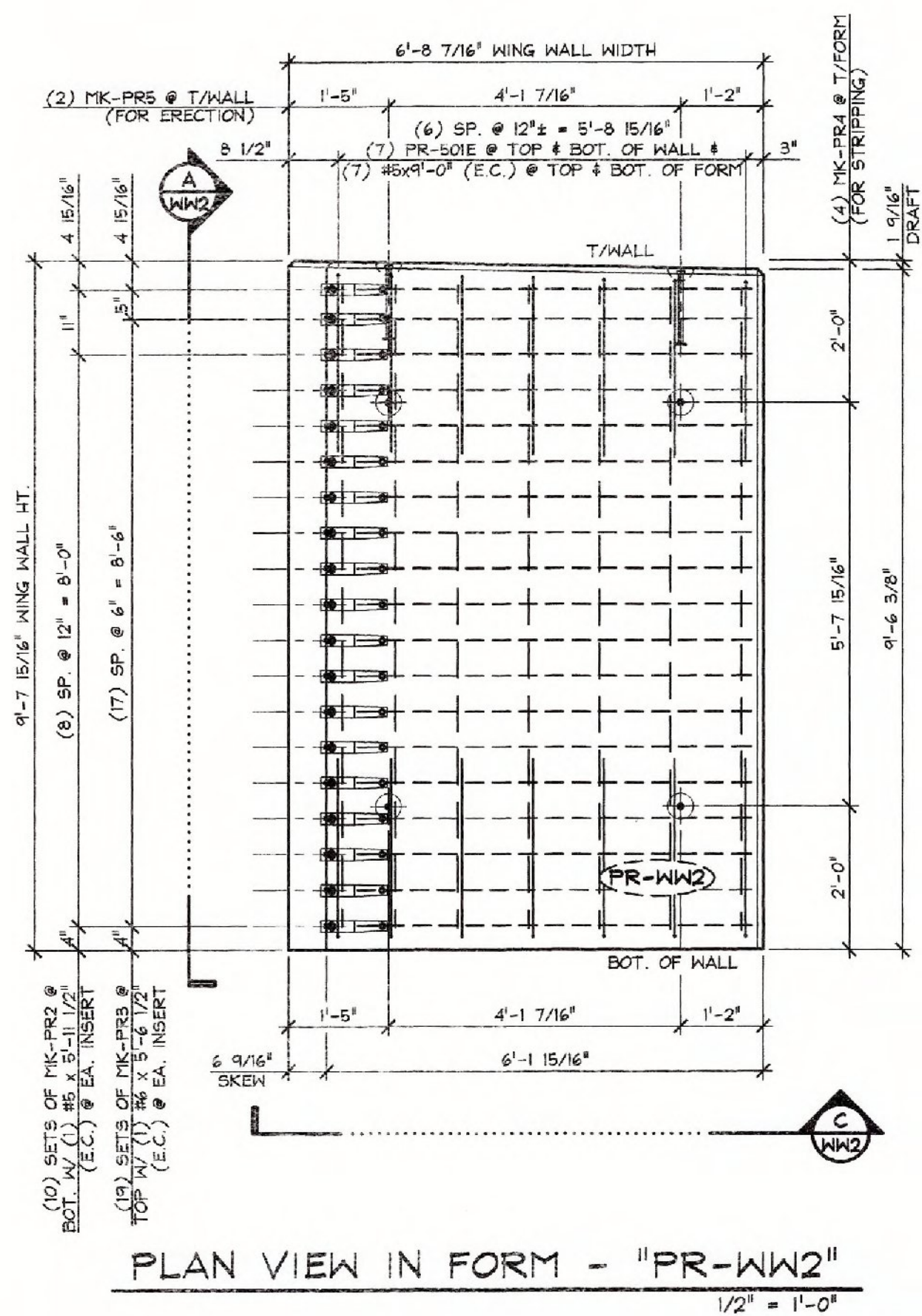


Vermont Agency of Transportation
RECEIVED
 ON: February 19, 2015
 and Checked for
CONFORMANCE
 BY: T. A. Sumner DATE: 02/25/15



SHOP DRAWING REVIEW

REVIEWED AS REQUIRED BY THE CONSTRUCTION CONTRACT DOCUMENTS AND APPROVED, BUT ONLY FOR CONFORMANCE TO THE DESIGN CONCEPT OF THE WORK, AND SUBJECT TO FURTHER LIMITATIONS AND REQUIREMENTS CONTAINED IN THE CONSTRUCTION CONTRACT DOCUMENTS.

REJECTED REVISE AND RESUBMIT APPROVED AS NOTED

CORRECTIONS OR COMMENTS MADE ON THE SHOP DRAWINGS DURING THIS REVIEW DO NOT RELIEVE THE CONTRACTOR FROM COMPLIANCE WITH REQUIREMENTS OF THE DRAWINGS AND SPECIFICATIONS. THIS CHECK IS ONLY FOR REVIEW OF GENERAL COMPLIANCE WITH THE DESIGN CONCEPT OF THE PROJECT AND GENERAL COMPLIANCE WITH THE INFORMATION GIVEN IN THE CONTRACT DOCUMENTS. THE CONTRACTOR IS RESPONSIBLE FOR ENGINEERING AND CORRELATING ALL QUANTITIES AND DIMENSIONS, SELECTING FABRICATION PROCESSES AND TECHNIQUES OF CONSTRUCTION, COORDINATING THEIR WORK WITH THAT OF ALL OTHER TRADES, AND PERFORMING THEIR WORK IN A SAFE AND SATISFACTORY MANNER.

Job Number: 12-0115
 Reviewed By: NDC
 Date: 2/20/15

| | | | |
|--------------|---------|-------------|---------------|
| MARK: PR-WW2 | QTY.: 1 | WT.: 6.94 T | VOL.: 3.42 cy |
| MARK: PR-WW3 | QTY.: 1 | WT.: 6.94 T | VOL.: 3.42 cy |

MATERIAL LIST / WING WALL

| ITEM | MARK | DESCRIPTION | QTY. / WALL | |
|------|---------|---|-------------|-----|
| | | | WW2 | WW3 |
| 1 | PR-SOIE | #5 BENT BAR (LEVEL 1, EPOXY COATED) | 14 | 14 |
| 2 | | #5 x 5'-11 1/2" (LEVEL 1, EPOXY COATED) | 10 | 10 |
| 3 | | #5 x 9'-0" (LEVEL 1, EPOXY COATED) | 14 | 14 |
| 4 | | | | |
| 5 | | | | |
| 6 | | #6 x 5'-6 1/2" (LEVEL 1, EPOXY COATED) | 19 | 19 |
| 7 | | | | |
| 8 | | | | |
| 9 | | | | |
| 10 | | | | |
| 11 | MK-PR2 | NMB SPLICE SLEEVE 5U-X(PG) (EPOXY COATED) | 10 | 10 |
| 12 | MK-PR3 | NMB SPLICE SLEEVE 6U-X(PG) (EPOXY COATED) | 19 | 19 |
| 13 | MK-PR4 | 4T x 5 1/2" SWIFT LIFT LIFTER | 4 | 4 |
| 14 | MK-PR5 | 8T x 13 3/8" SWIFT LIFT LIFTER | 2 | 2 |
| 15 | | | | |

2-12-15 REVISED PER VT AOT COMMENTS

| | | |
|-----------------|---|---|
| APPROVAL STAMP: | J.P. CARRARA & SONS INC. Precast & Prestress Manufacturer 2444 CASE ST., MIDDLEBURY, VERMONT 05753 Phone: (802)388-6361 Fax: (802)388-9010 | J.P. SICARD, INC. CONTRACTOR BARTON, VERMONT |
| | STATE OF VERMONT AGENCY OF TRANSPORTATION COUNTY OF ORANGE | DATE: NOV. 18, 2014 SCALE: NOTED |
| | TOWN OF RANDOLPH TOWN HIGHWAY 65 (PALMER ROAD) CLASS 3 LOCAL ROAD BRIDGE NO.: 35 PROJECT NO.: BRO 1444(B7) | CHKD: B.C. DFTM: B.L. JOB NO: 23449-014 |
| | PRECAST WING WALL DETAILS | DWG. NO: WW2 |