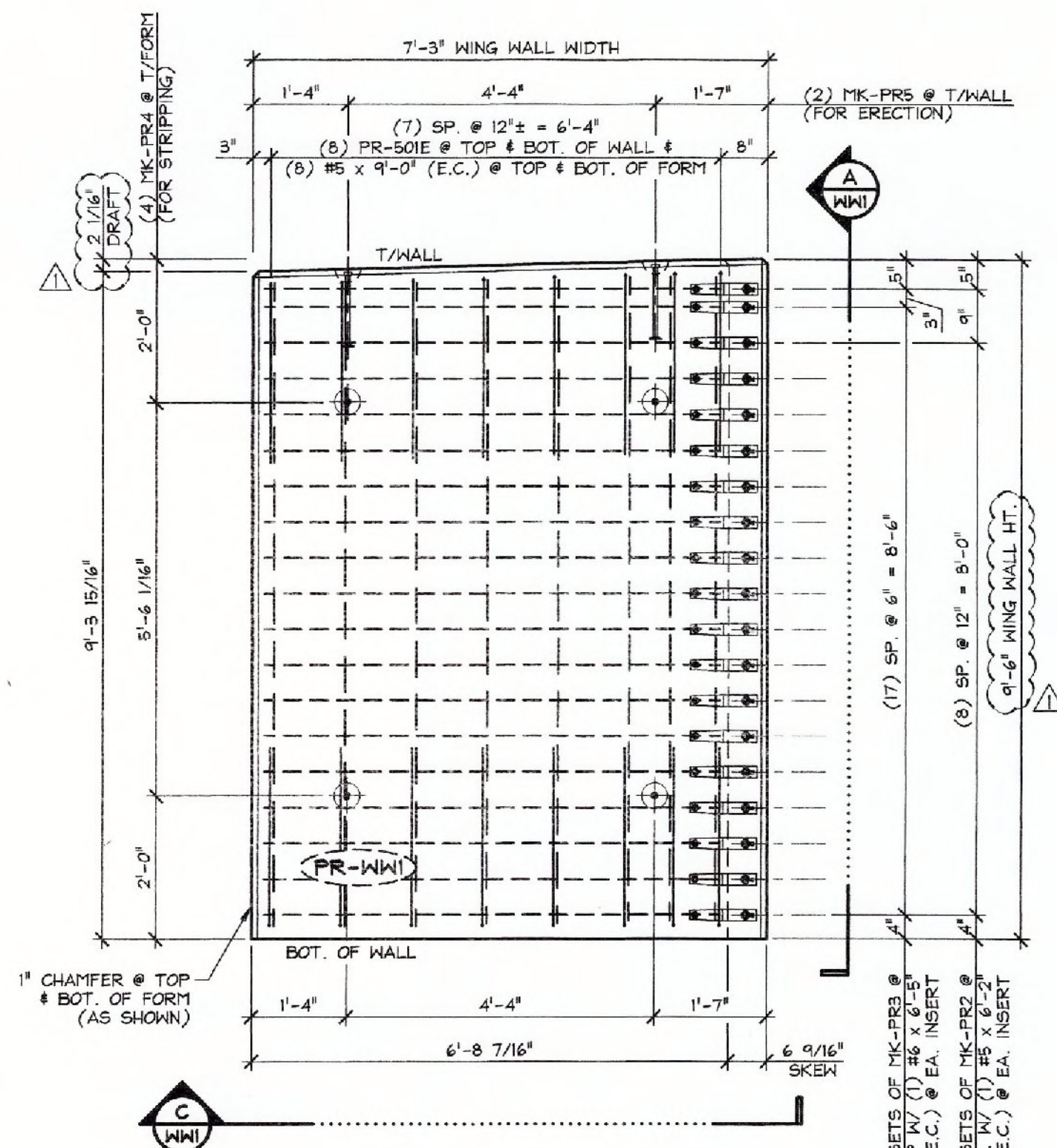
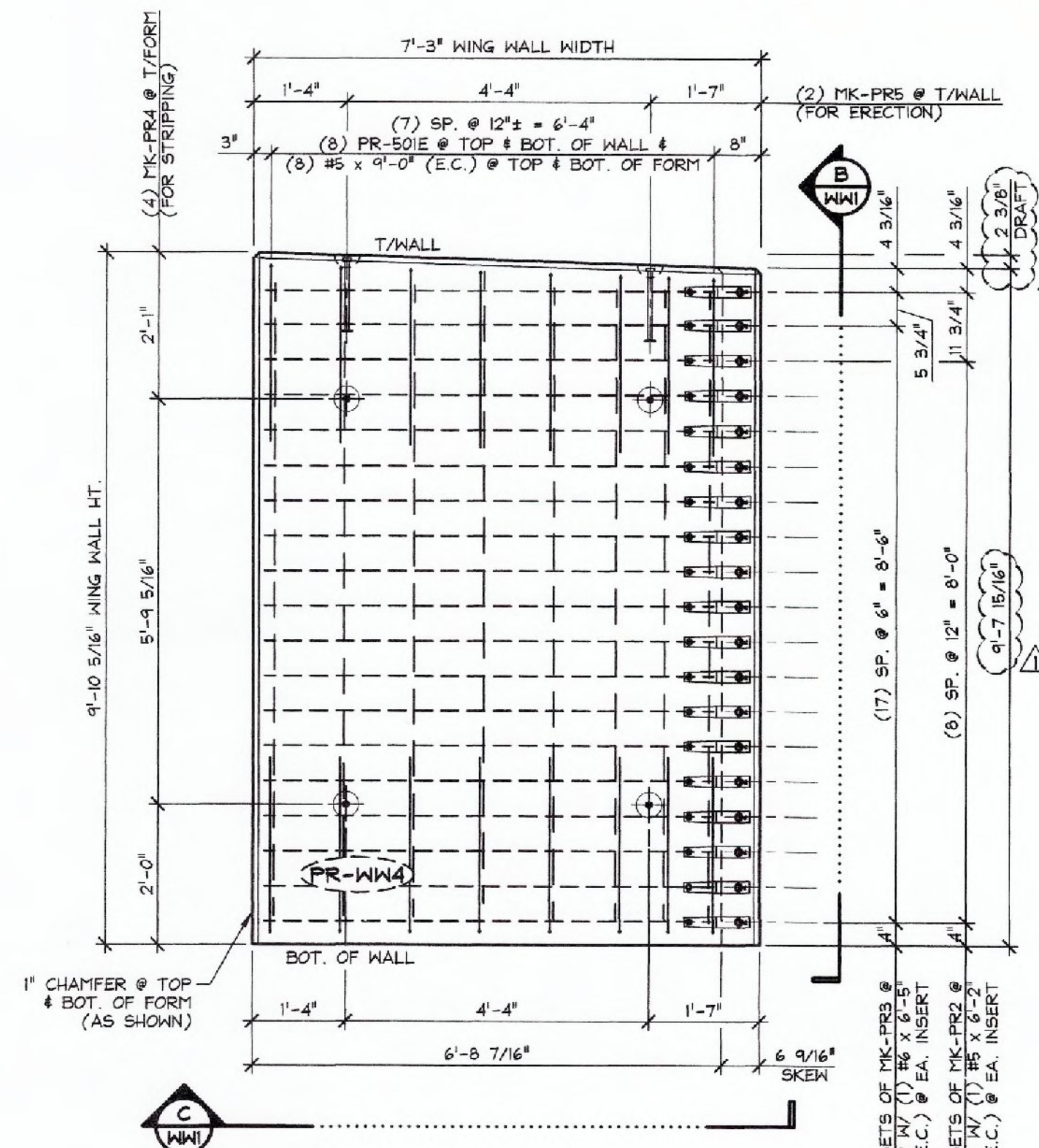


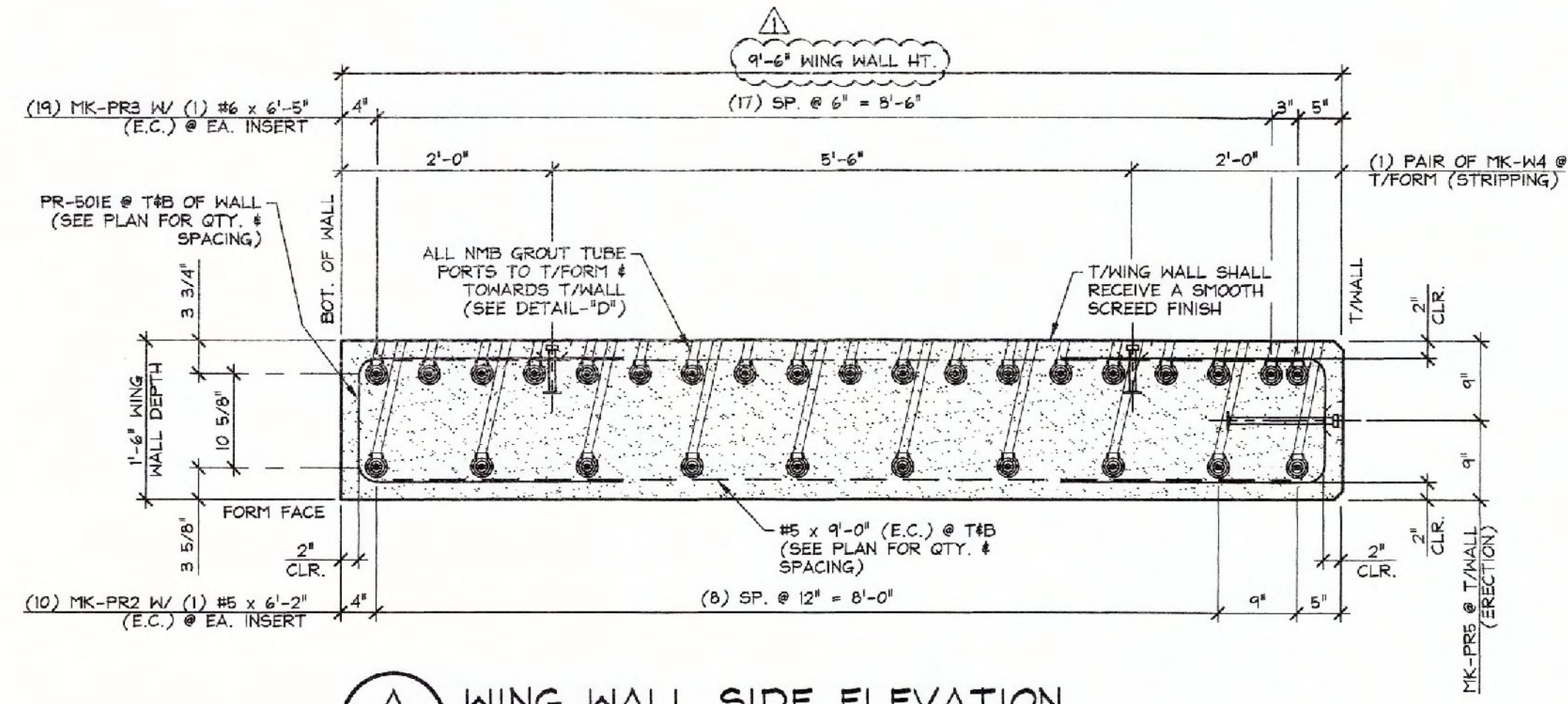
Vermont Agency of Transportation
RECEIVED
 ON: February 19, 2015
 and Checked for
CONFORMANCE
 BY: T. A. Sumner DATE: 02/25/15



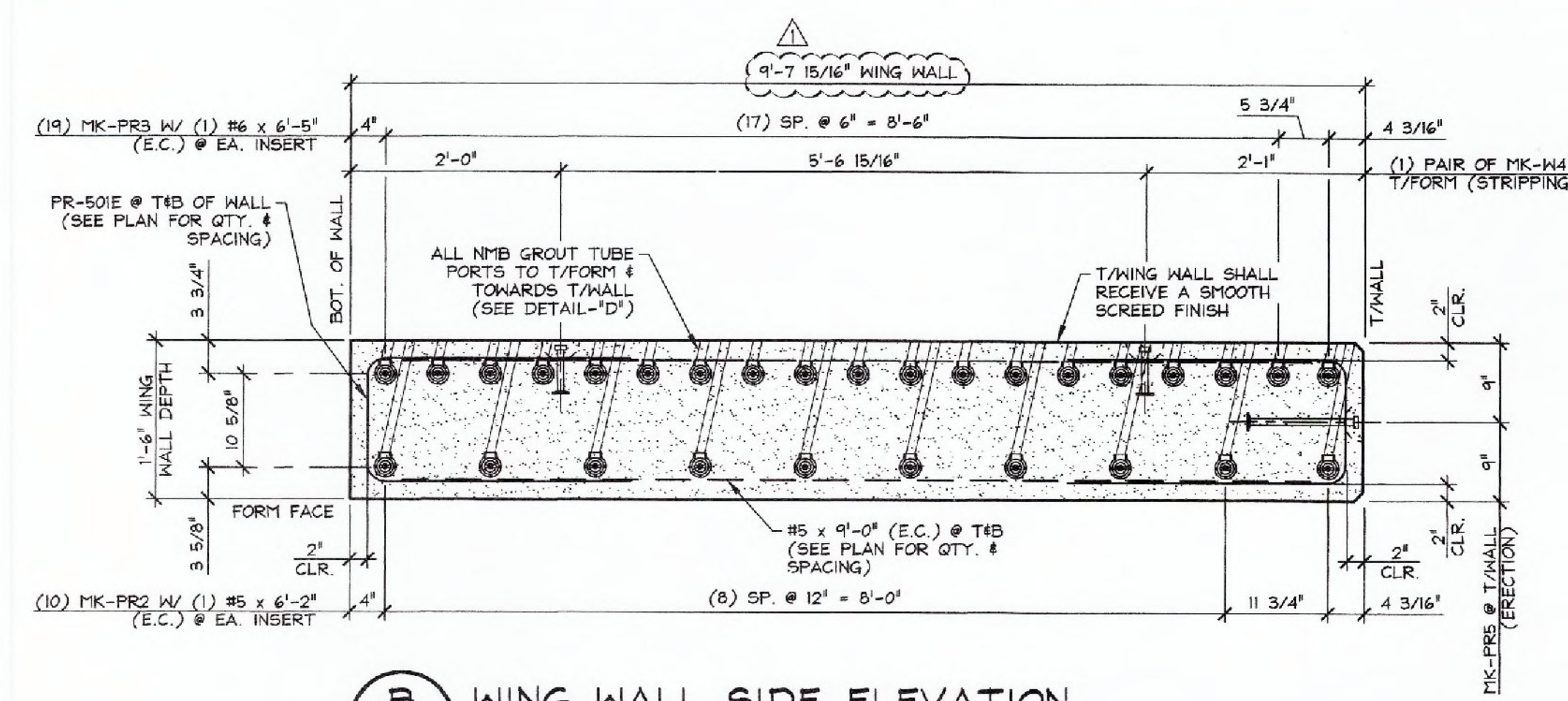
PLAN VIEW IN FORM - "PR-WW1"
 1/2" = 1'-0"



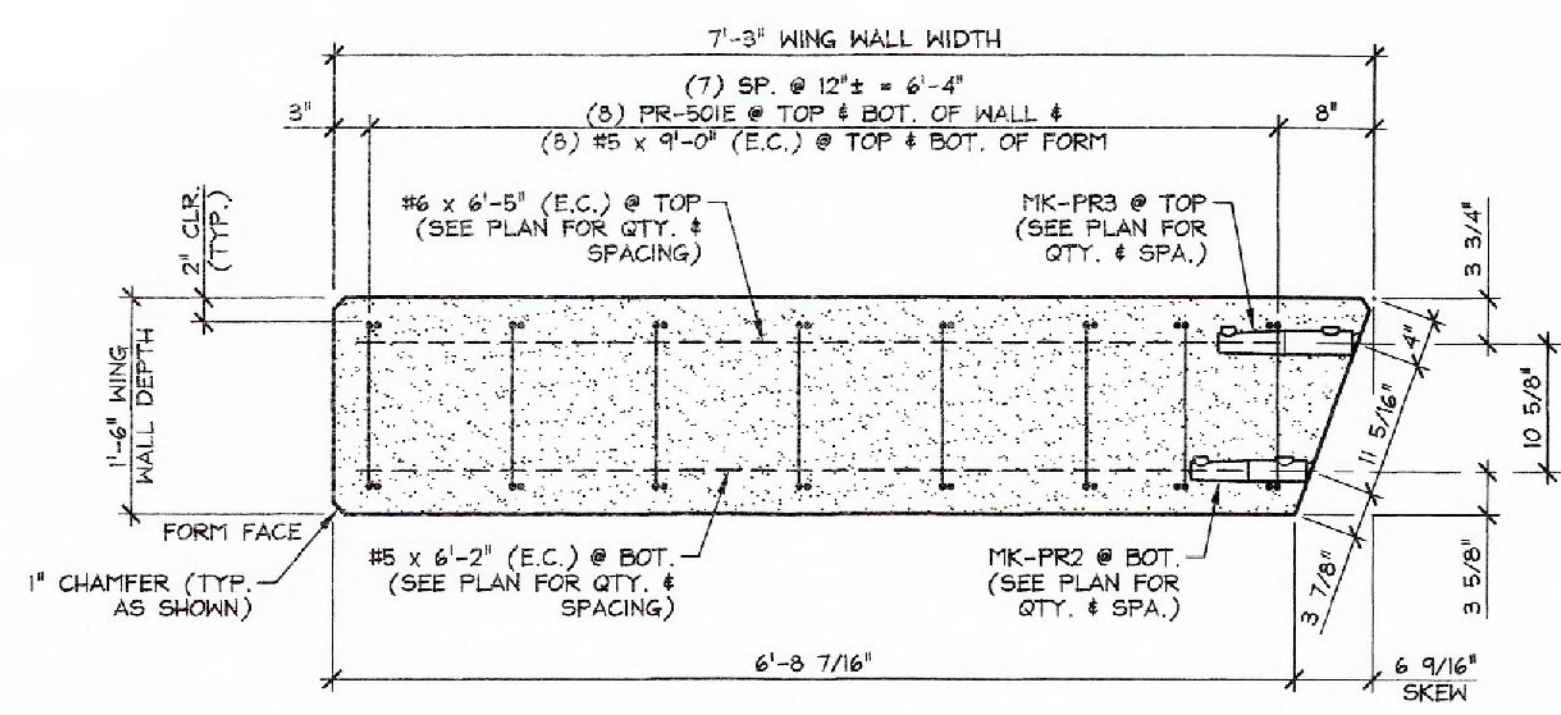
PLAN VIEW IN FORM - "PR-WW4"
 1/2" = 1'-0"



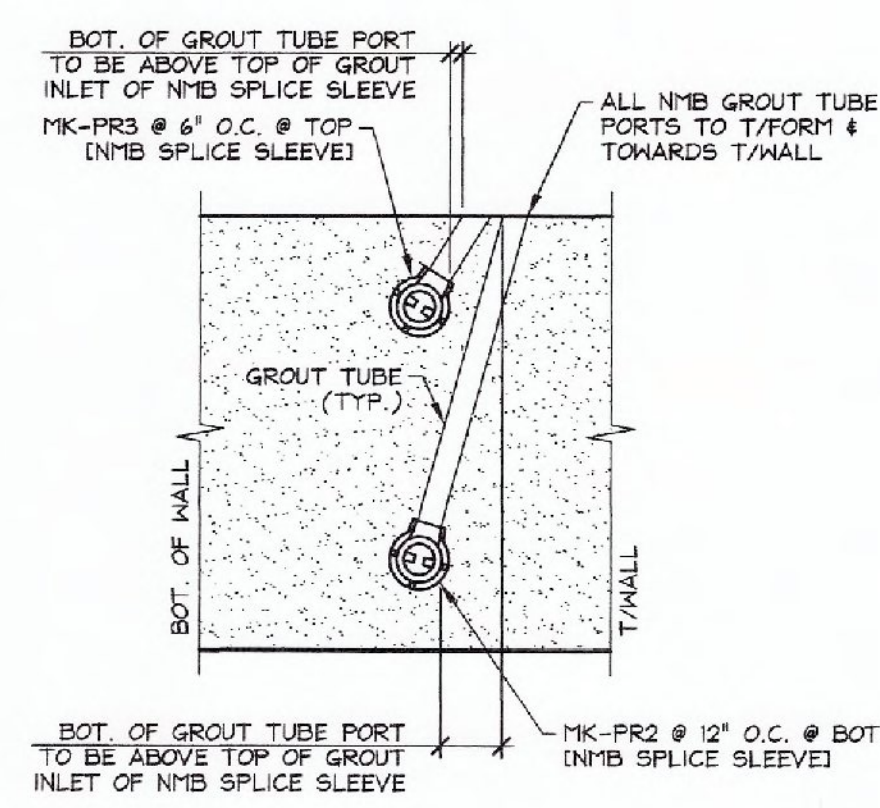
A WING WALL SIDE ELEVATION
 3/4" = 1'-0"



B WING WALL SIDE ELEVATION
 3/4" = 1'-0"



C WING WALL BOTTOM ELEVATION
 3/4" = 1'-0"



DETAIL - "D"
 3/4" = 1'-0"

SHOP DRAWING REVIEW

REVIEWED AS REQUIRED BY THE CONSTRUCTION CONTRACT DOCUMENTS AND APPROVED FOR ONLY FOR CONFORMANCE TO THE DESIGN CONCEPT OF THE WORK AND SUBJECT TO FURTHER LIMITATIONS AND REQUIREMENTS CONTAINED IN THE CONSTRUCTION CONTRACT DOCUMENTS.

REJECTED REVISE AND RESUBMIT APPROVED AS NOTED

CORRECTIONS OR COMMENTS MADE ON THE SHOP DRAWINGS DURING THIS REVIEW DO NOT RELIEVE CONTRACTOR FROM COMPLIANCE WITH REQUIREMENTS OF THE DRAWINGS AND SPECIFICATIONS. THIS CHECK IS ONLY FOR REVIEW OF GENERAL COMPLIANCE WITH THE INFORMATION GIVEN IN THE CONTRACT DOCUMENTS. THE CONTRACTOR IS RESPONSIBLE FOR CORRECTING AND CORRELATING ALL QUANTITIES AND DIMENSIONS, SELECTING FABRICATION PROCESSES AND TECHNIQUES OF CONSTRUCTION, COORDINATING THEIR WORK WITH THAT OF ALL OTHER TRADES, AND PERFORMING THEIR WORK IN A SAFE AND SATISFACTORY MANNER.

Job Number: 12-0175
 Reviewed By: NDC
 Date: 2/20/15

MARK: PR-WW1	QTY.: 1	WT.: 7.39 T	VOL.: 3.65 cy
MARK: PR-WW4	QTY.: 1	WT.: 7.65 T	VOL.: 3.78 cy

MATERIAL LIST / WING WALL

ITEM	MARK	DESCRIPTION	QTY. / WALL	
			WW1	WW4
1	PR-501E	#5 BENT BAR (LEVEL 1, EPOXY COATED)	16	16
2		#5 x 6'-2" (LEVEL 1, EPOXY COATED)	10	10
3		#5 x 9'-0" (LEVEL 1, EPOXY COATED)	16	16
4		#6 x 6'-5" (LEVEL 1, EPOXY COATED)	19	19
5				
6				
7				
8				
9				
10				
11	MK-PR2	NMB SPLICE SLEEVE 5U-X(PG) (EPOXY COATED)	10	10
12	MK-PR3	NMB SPLICE SLEEVE 6U-X(PG) (EPOXY COATED)	19	19
13	MK-PR4	4T x 5 1/2" SHIFIT LIFT LIFTER	4	4
14	MK-PR5	8T x 13 3/8" SHIFIT LIFT LIFTER	2	2
15				

2-12-15 REVISED PER VT AOT COMMENTS

APPROVAL STAMP:	J.P. CARRARA & SONS INC. Precast & Prestress Manufacturer 2764 ONE STR. WINDSOR, VERMONT 05753 Phone:(802)388-6361 Fax:(802)388-9010	J.P. SICARD, INC. CONTRACTOR BARTON, VERMONT
	STATE OF VERMONT AGENCY OF TRANSPORTATION COUNTY OF ORANGE	DATE: NOV. 18, 2014 SCALE: NOTED
	TOWN OF RANDOLPH TOWN HIGHWAY 65 (PALMER ROAD) CLASS 3 LOCAL ROAD BRIDGE NO.: 35 PROJECT NO.: BRO 1444(57)	CHKD: B.C. DFTM: B.L. JOB NO: 23449-014
	PRECAST WING WALL DETAILS	DWG. NO: WW1