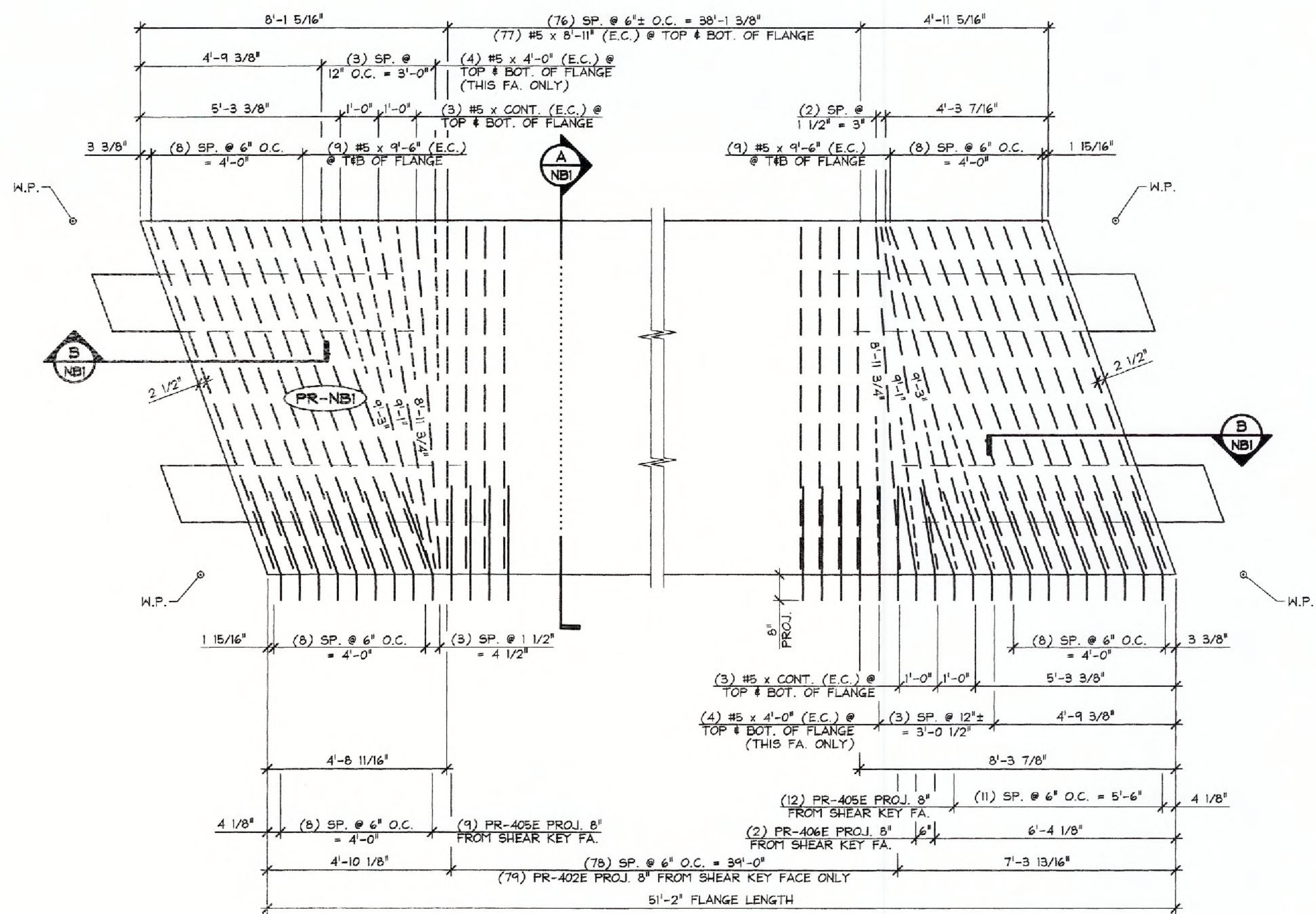


THIS DETAIL HAS BEEN OMITTED

1 T/FLANGE #4 (E.C.) TRANSVERSE REINFORCING PLAN
 NB3 LONGITUDINAL REINFORCING NOT SHOWN FOR CLARITY 3/8" = 1'-0"



2 TOP & BOTTOM #5 (E.C.) TRANSVERSE REINFORCING PLAN
 NB3 LONGITUDINAL REINFORCING NOT SHOWN FOR CLARITY
 - ADDITIONAL #4 (E.C.) TRANSVERSE REINFORCING NOT SHOWN FOR CLARITY (SEE DETAIL 'B/NBI')
 3/8" = 1'-0"

Vermont Agency of Transportation
RECEIVED
 ON: February 19, 2015
 and Checked for
CONFORMANCE
 BY: T. A. Sumner DATE: 02/25/15

SHOP DRAWING REVIEW

REVIEWED AS REQUIRED BY THE CONSTRUCTION CONTRACT DOCUMENTS AND APPROVED, BUT ONLY FOR CONFORMANCE TO THE DESIGN CONCEPT OF THE WORK, AND SUBJECT TO FURTHER LIMITATIONS AND REQUIREMENTS CONTAINED IN THE CONSTRUCTION CONTRACT DOCUMENTS.

REJECTED REVISE AND RESUBMIT APPROVED AS NOTED

CORRECTIONS OR COMMENTS MADE ON THE SHOP DRAWINGS DURING THIS REVIEW DO NOT RELIEVE CONTRACTOR FROM COMPLIANCE WITH REQUIREMENTS OF THE DRAWINGS AND SPECIFICATIONS. THIS CHECK IS ONLY FOR REVIEW OF GENERAL CONFORMANCE WITH THE DESIGN CONCEPT OF THE PROJECT AND GENERAL COMPLIANCE WITH THE INFORMATION GIVEN IN THE CONTRACT DOCUMENTS. THE CONTRACTOR IS RESPONSIBLE FOR CORRECTING AND CORRELATING ALL QUANTITIES AND DIMENSIONS, SELECTING FABRICATION PROCESSES AND TECHNIQUES OF CONSTRUCTION, COORDINATING THEIR WORK WITH THAT OF ALL OTHER TRADES, AND PERFORMING THEIR WORK IN A SAFE AND SATISFACTORY MANNER.

C.D. Working Systems, Inc.
 540 Corporate Street
 Montpelier, VT 05602
 802-249-9223

Job Number: 12-0175
 Reviewed By: NDC
 Date: 2/20/15

2-12-15 REVISED PER VT AOT COMMENTS

APPROVAL STAMP:	J.P. CARRARA & SONS INC. Precast & Prestress Manufacturer 2461 ONE STOP, WAREHOUSES, VERMONT 05653 Phone: (802)388-8361 Fax: (802)388-9010		J.P. SICARD, INC. CONTRACTOR BARTON, VERMONT	
	STATE OF VERMONT AGENCY OF TRANSPORTATION COUNTY OF ORANGE		DATE: NOV. 18, 2014 SCALE: NOTED	
	TOWN OF RANDOLPH TOWN HIGHWAY 65 (PALMER ROAD) CLASS 3 LOCAL ROAD BRIDGE NO.: 35 PROJECT NO.: BRO 1444(57)		CHKD: B.C. DFTM: B.L. JOB NO: 23449-014	
	PRESTRESSED NEXT BEAM FLANGE REINFORCING		DWG. NO: NB3	