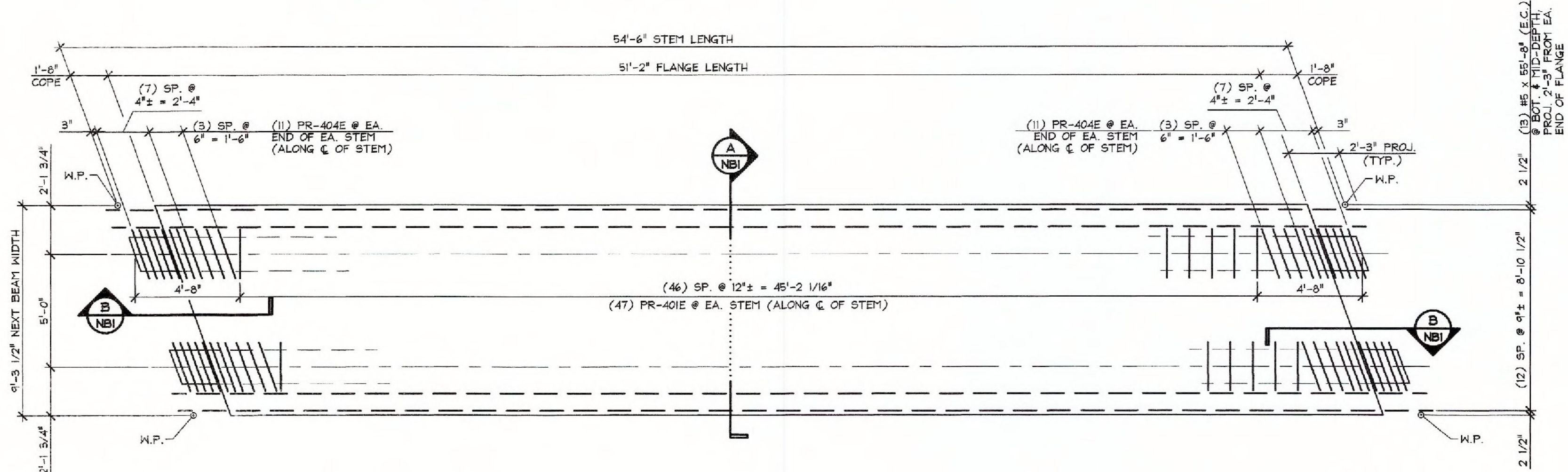


1 DIMENSIONAL PLAN VIEW IN FORM  
NB2 1/4" = 1'-0"



2 REINFORCING PLAN VIEW IN FORM  
NB2 SEE SHEET 'NB3' FOR TRANSVERSE AND SHEAR KEY REINFORCING 1/4" = 1'-0"

MATERIAL LIST / NEXT BEAM			
ITEM	MARK	DESCRIPTION	QTY.
1	PR-401E	#4 BENT BAR (LEVEL I, EPOXY COATED)	94
2	PR-402E	#4 BENT BAR (LEVEL I, EPOXY COATED)	79
3	PR-403E	#4 BENT BAR (LEVEL I, EPOXY COATED)	16
4	PR-404E	#4 BENT BAR (LEVEL I, EPOXY COATED)	44
5	PR-405E	#4 BENT BAR (LEVEL I, EPOXY COATED)	21
6	PR-406E	#4 BENT BAR (LEVEL I, EPOXY COATED)	2
7	PR-407E	#4 BENT BAR (LEVEL I, EPOXY COATED)	2
8	PR-408E	#4 BENT BAR (LEVEL I, EPOXY COATED)	2
9	PR-409E	#4 BENT BAR (LEVEL I, EPOXY COATED)	2
10		#4 x 9'-6" (LEVEL I, EPOXY COATED)	20
11		#4 x 8'-0" (LEVEL I, EPOXY COATED)	4
12		#4 x 8'-0" (LEVEL I, EPOXY COATED)	4
13		#4 x 8'-0" (LEVEL I, EPOXY COATED)	4
14		#4 x 8'-0" (LEVEL I, EPOXY COATED)	4
15		#5 x 4'-0" (LEVEL I, EPOXY COATED)	16
16		#5 x 8'-11" (LEVEL I, EPOXY COATED)	154
17		#5 x 8'-11 3/4" (LEVEL I, EPOXY COATED)	4
18		#5 x 9'-1" (LEVEL I, EPOXY COATED)	4
19		#5 x 9'-3" (LEVEL I, EPOXY COATED)	4
20		#5 x 9'-6" (LEVEL I, EPOXY COATED)	36
21		#5 x 55'-8" (LEVEL I, EPOXY COATED)	26
22			
23	MK-PR6	DAYTON 3/4" F-42 LOOP FERRULE INSERT (GALV.)	13
24		GUARD RAIL ANCHOR PLATE (SUPPLIED BY OTHERS)	6
25		SET OF (4) 0.60" STRAND LIFTING LOOPS	4

Vermont Agency of Transportation  
**RECEIVED**  
 ON: February 19, 2015  
 and Checked for  
**CONFORMANCE**  
 BY: T. A. Sumner DATE: 02/25/15

**SHOP DRAWING REVIEW**

REVIEWED AS REQUIRED BY THE CONSTRUCTION CONTRACT DOCUMENTS AND APPROVED, BUT ONLY FOR CONFORMANCE TO THE DESIGN CONCEPT OF THE WORK, AND SUBJECT TO FURTHER LIMITATIONS AND REQUIREMENTS CONTAINED IN THE CONSTRUCTION CONTRACT DOCUMENTS.

REJECTED  REVISE AND RESUBMIT  APPROVED AS NOTED

CORRECTIONS OR COMMENTS MADE ON THE SHOP DRAWINGS DURING THIS REVIEW DO NOT RELIEVE CONTRACTOR FROM COMPLIANCE WITH REQUIREMENTS OF THE DRAWINGS AND SPECIFICATIONS. THIS CHECK IS ONLY FOR REVIEW OF GENERAL CONFORMANCE WITH THE DESIGN CONCEPT OF THE PROJECT AND GENERAL COMPLIANCE WITH THE INFORMATION GIVEN IN THE CONTRACT DOCUMENTS. THE CONTRACTOR IS RESPONSIBLE FOR CORRECTING AND CORRELATING ALL QUANTITIES AND DIMENSIONS, SELECTING FABRICATION PROCESSES AND TECHNIQUES OF CONSTRUCTION, COORDINATING THEIR WORK WITH THAT OF ALL OTHER TRADES, AND PERFORMING THEIR WORK IN A SAFE AND SATISFACTORY MANNER.

2-D Consulting Engineers, Inc.  
 142 Commercial Street  
 North Ferris, VT 05491  
 800-648-8223

Job Number: 12-0115  
 Reviewed By: NDC  
 Date: 2/20/15

2-12-15 REVISED PER VT AOT COMMENTS

APPROVAL STAMP:

<b>J.P. CARRARA &amp; SONS INC.</b> Precast & Prestress Manufacturer 2644 CASE ST., WOODBURY, VERMONT 05753 Phone: (802) 388-6361 Fax: (802) 388-9010		<b>J.P. SICARD, INC.</b> CONTRACTOR BARTON, VERMONT	
STATE OF VERMONT AGENCY OF TRANSPORTATION COUNTY OF ORANGE		DATE: NOV. 18, 2014 SCALE: NOTED	
TOWN OF RANDOLPH PALMER ROAD CLASS 3 LOCAL ROAD BRIDGE NO.: 35 PROJECT NO.: BRO 1444(57)		CHKD: B.C. DFTM: B.L. JOB NO.: 23449-014	
<b>PRESTRESSED NEXT BEAM PLANS</b>		DWG. NO: <b>NB2</b>	