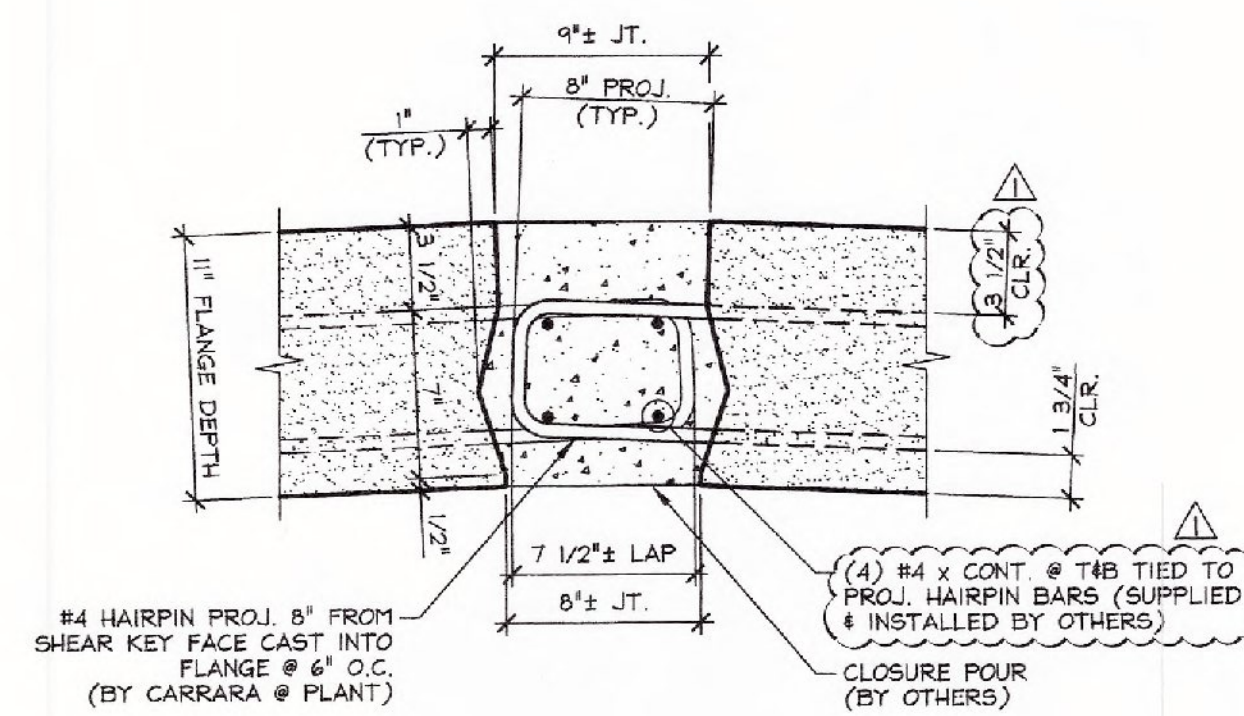
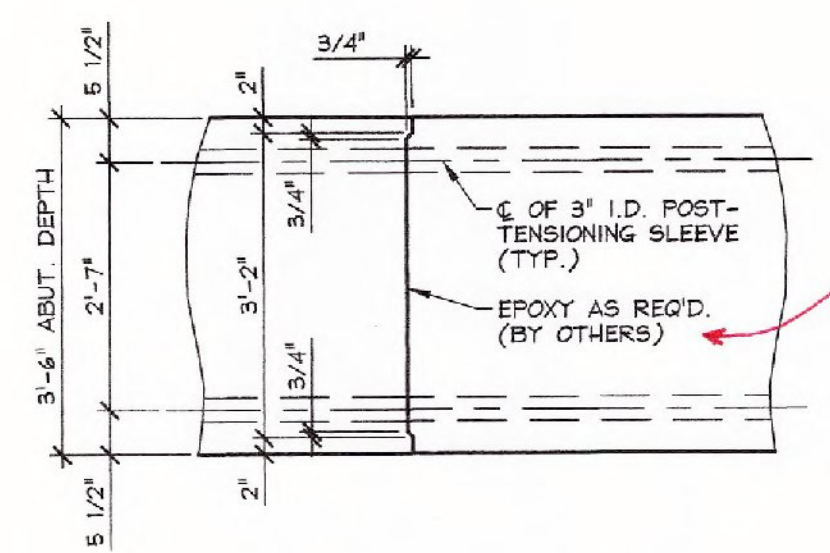


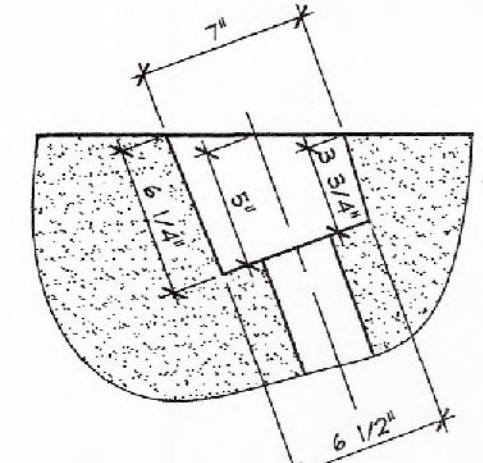
**A** BEARING SECTION  
NEXT BEAM STEM BEARING  
3/4" = 1'-0"



**B** NEXT BEAM CLOSURE POUR  
1 1/2" = 1'-0"

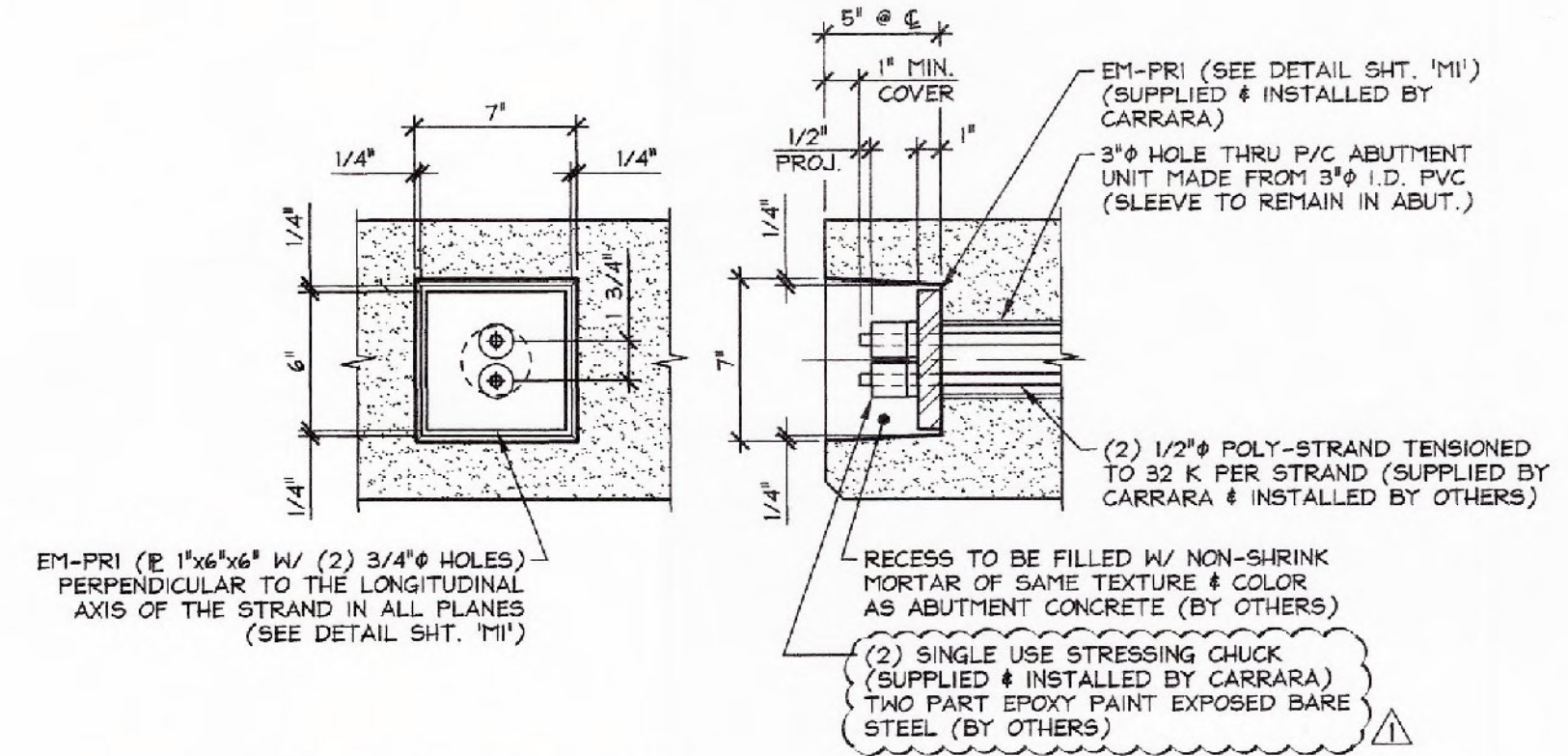


**C** MATCH CAST SECTION @  
P.T. SLEEVE  
1/2" = 1'-0"



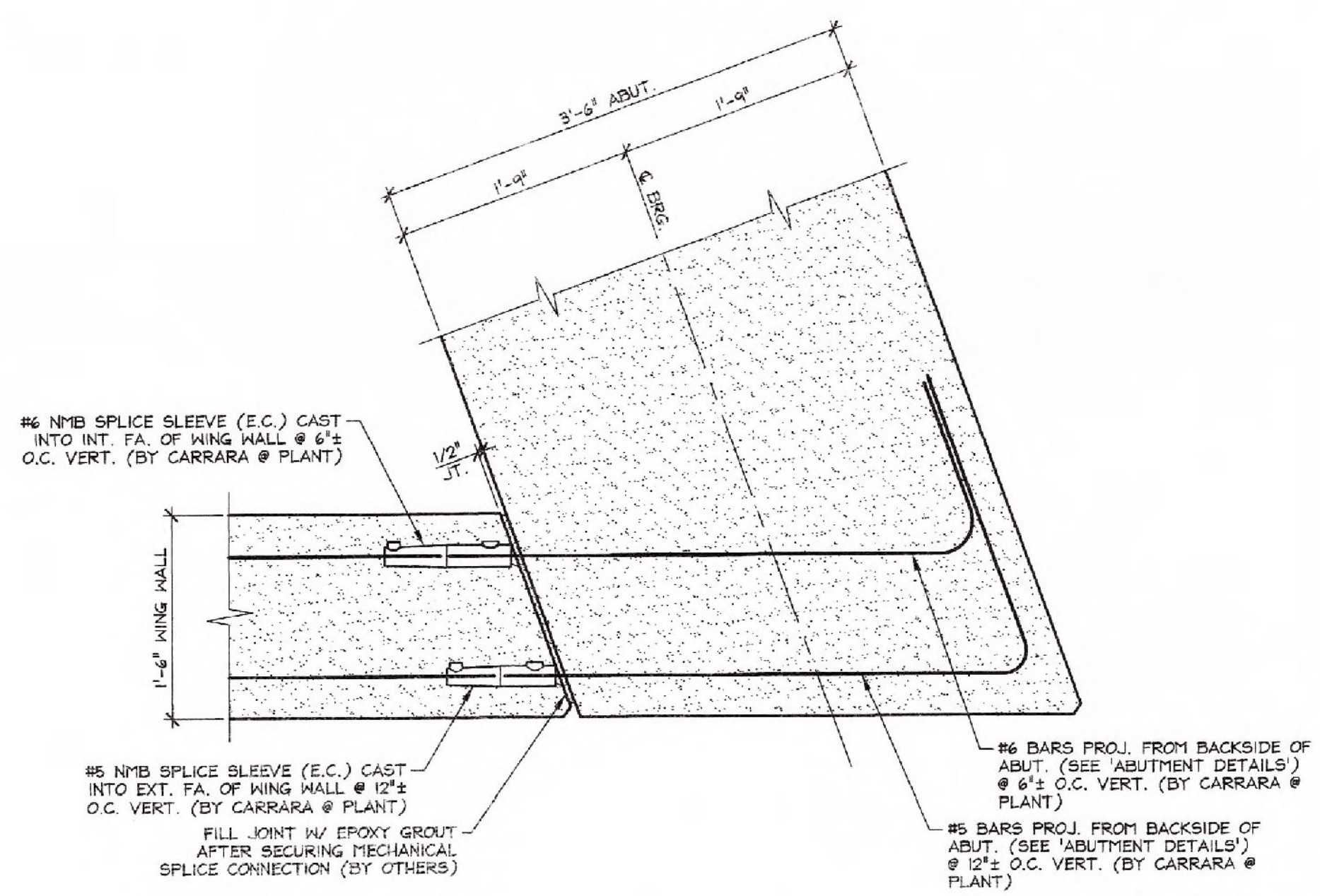
PLAN OF POCKET

CLARIFY THE EPOXY PRODUCT TO BE USED A MINIMUM OF ONE WEEK PRIOR TO FABRICATION

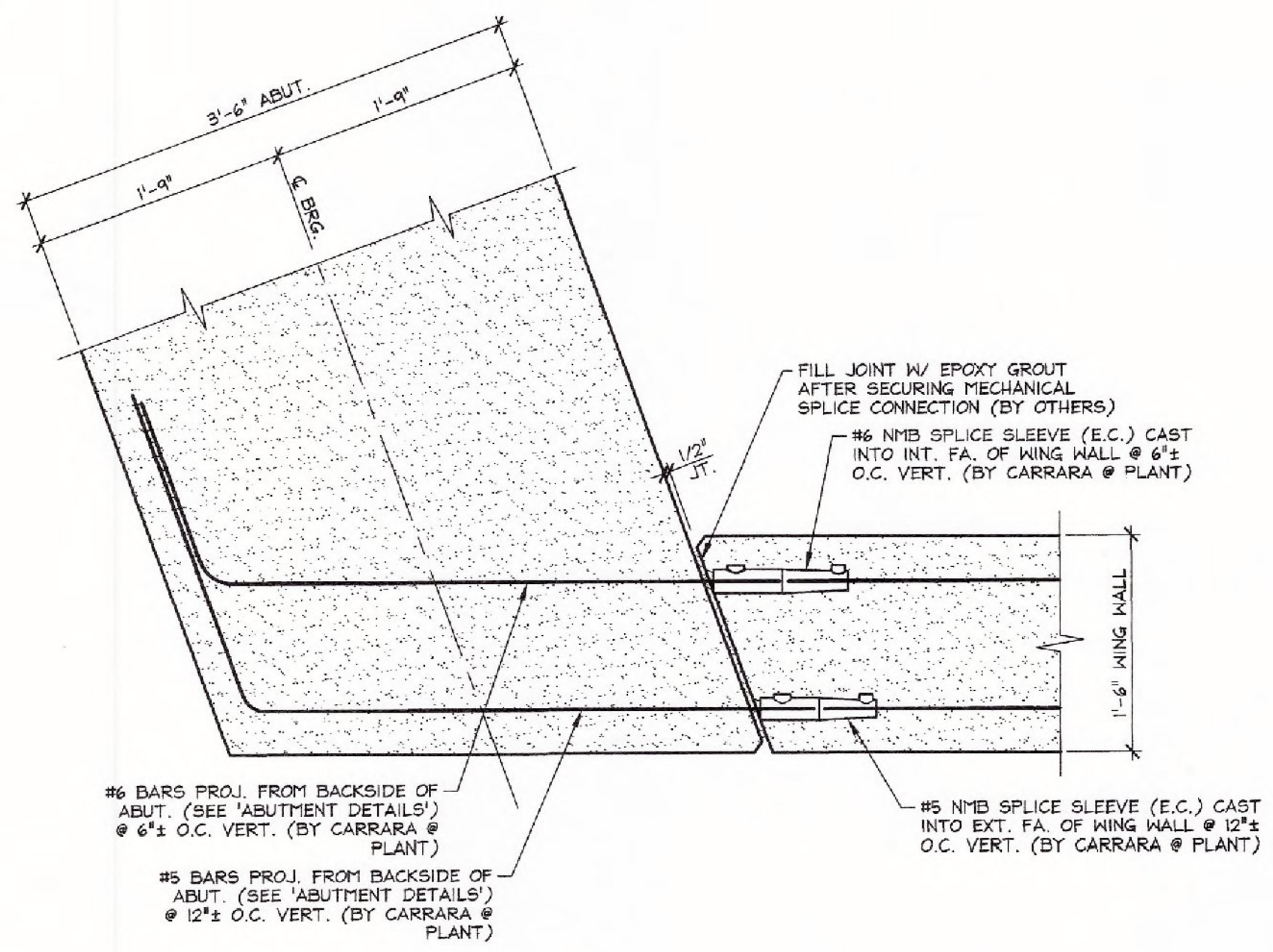


ABUTMENT ELEVATION SECTION AT CENTERLINE

DETAIL - "A"  
1 1/2" = 1'-0"



**D** WING WALL CONNECTION DETAIL  
F5  
1" = 1'-0"



**E** WING WALL CONNECTION DETAIL  
F5  
1" = 1'-0"

**GENERAL NOTE:**  
ALL SPLICE SLEEVES TO BE GROUTED W/ NMB SS MORTAR PER MANUFACTURERS INSTRUCTION, (BY OTHERS)

Vermont Agency of Transportation  
**RECEIVED**  
ON: February 19, 2015  
and Checked for  
**CONFORMANCE**  
BY: T. A. Sumner DATE: 02/25/15

**SHOP DRAWING REVIEW**

REVIEWED AS REQUIRED BY THE CONSTRUCTION CONTRACT DOCUMENTS AND APPROVED, BUT ONLY FOR CONFORMANCE TO THE DESIGN CONCEPT OF THE WORK AND SUBJECT TO FURTHER LIMITATIONS AND REQUIREMENTS CONTAINED IN THE CONSTRUCTION CONTRACT DOCUMENTS.

REJECTED  REVISE AND RESUBMIT  APPROVED AS NOTED

CORRECTIONS OR COMMENTS MADE ON THE SHOP DRAWINGS DURING THIS REVIEW DO NOT RELIEVE CONTRACTOR FROM COMPLIANCE WITH REQUIREMENTS OF THE DRAWINGS AND SPECIFICATIONS. THIS CHECK IS ONLY FOR REVIEW OF GENERAL CONFORMANCE WITH THE DESIGN CONCEPT OF THE PROJECT AND GENERAL COMPLIANCE WITH THE INFORMATION GIVEN IN THE CONTRACT DOCUMENTS. THE CONTRACTOR IS RESPONSIBLE FOR CORRECTING AND CORRELATING ALL QUANTITIES AND DIMENSIONS; SELECTING FABRICATION PROCESSES AND TECHNIQUES OF CONSTRUCTION; COORDINATING THEIR WORK WITH THAT OF ALL OTHER TRADES; AND PERFORMING THEIR WORK IN A SAFE AND SATISFACTORY MANNER.

Job Number: 12-0175  
Reviewed By: NDC  
Date: 2/20/15

2-12-15 REVISED PER VT AOT COMMENTS

APPROVAL STAMP:	<b>J.P. CARRARA &amp; SONS INC.</b> Precast & Prestress Manufacturer 244 OZE ST., WOODBURY, VERMONT 05753 Phone: (802)388-6361 Fax: (802)388-8010	<b>J.P. SICARD, INC.</b> CONTRACTOR BARTON, VERMONT
<b>STATE OF VERMONT AGENCY OF TRANSPORTATION</b> COUNTY OF ORANGE		DATE: Nov. 18, 2014
<b>TOWN OF RANDOLPH</b> TOWN HIGHWAY 65 (PALMER ROAD) CLASS 3 LOCAL ROAD BRIDGE NO.: 35 PROJECT NO.: BRO 1444(57)		SCALE: NOTED
<b>ABUTMENT SECTIONS &amp; DETAILS</b>		CHKD: B.C. DFTM: B.L. JOB NO: 23449-014
		DWG. NO: <b>F5</b>