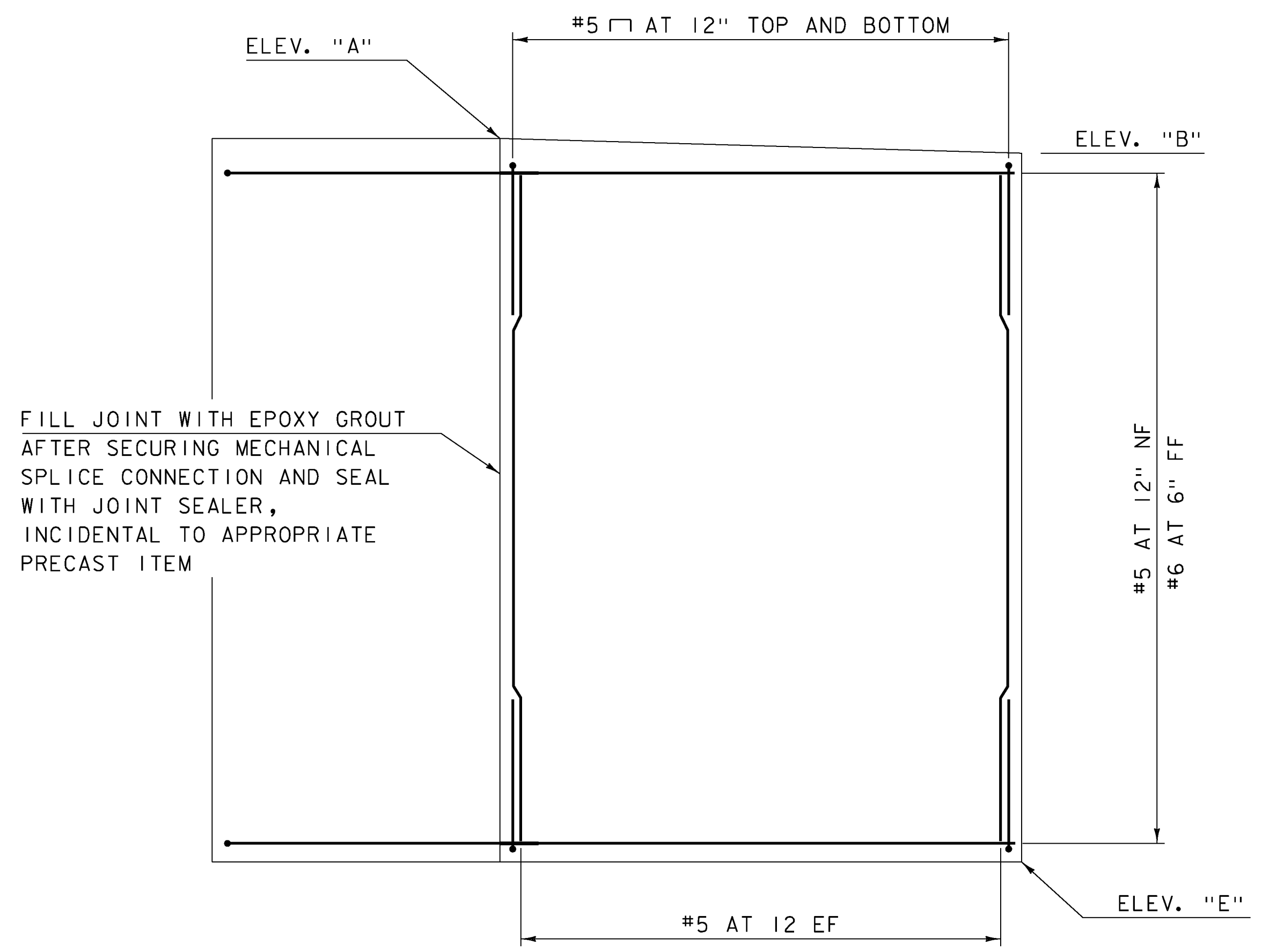


WINGWALL PLAN (PCU3)
SCALE: 3/4" = 1'-0"

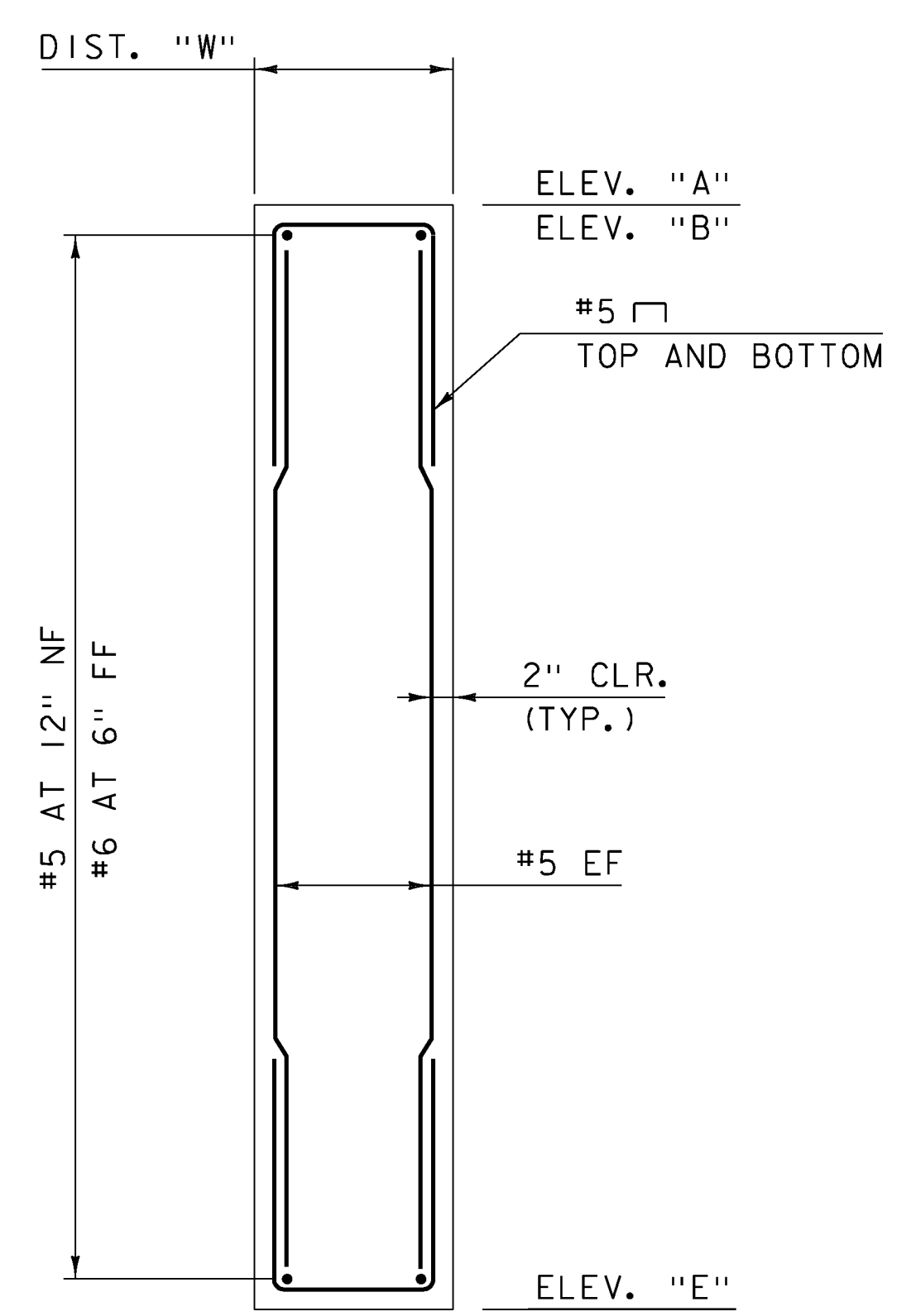
PCU ELEVATIONS

	WW1	WW2	WW3	WW4
ELEV. "A"	574.25	574.41	575.50	575.66
ELEV. "B"	574.08	574.28	576.63	575.86
ELEV. "E"	564.75	564.75	566.00	566.00
DIST. "W"	1'-6"	1'-6"	1'-6"	1'-6"
DIST. "I"	7'-3 1/2"	6'-2 1/2"	6'-2 1/2"	7'-3 1/2"
DIST. "O"	6'-9"	6'-9"	6'-9"	6'-9"
ANGLE "D"	70°	110°	110°	70°

- NOTES:**
- EPOXY GROUT SHALL BE INCIDENTAL TO ITEM 540.10, "PRECAST CONCRETE STRUCTURE".
 - ALL REBAR AND MECHANICAL CONNECTORS IN WINGWALLS SHALL BE LEVEL 1 EPOXY COATED.
 - THE BRIDGE PLAQUE FURNISHED BY THE AGENCY SHALL BE CAST INTO WINGWALL 2. ALL WORK TO INSTALL THE PLAQUE SHALL BE INCIDENTAL TO THE PRECAST CONCRETE STRUCTURE ITEM. SEE SD-502.00 FOR FURTHER DETAILS.
 - WW1 SHOWN, OTHERS SHALL BE SIMILAR.



WINGWALL ELEVATION (PCU3)
SCALE: 3/4" = 1'-0"



WINGWALL TYPICAL (PCU3)
SCALE: 3/4" = 1'-0"

NOTE:

NF = NEAR FACE
 FF = FAR FACE
 EF = EACH FACE
 3" CLEAR, UNLESS OTHERWISE SPECIFIED ON THE THE PLANS.
 2'-6" BAR LAP UNLESS OTHERWISE SPECIFIED ON THE PLANS

CLD 12-0175 MODEL: 04



PROJECT NAME: RANDOLPH	PLOT DATE: 8/12/2014
PROJECT NUMBER: BRO 1444(57)	DRAWN BY: M. SMITH
FILE NAME: z11j078sub.dgn	CHECKED BY: J. BYATT
PROJECT LEADER: J. BYATT	SHEET 27 OF 39
DESIGNED BY: N. CARON	WINGWALL DETAILS