

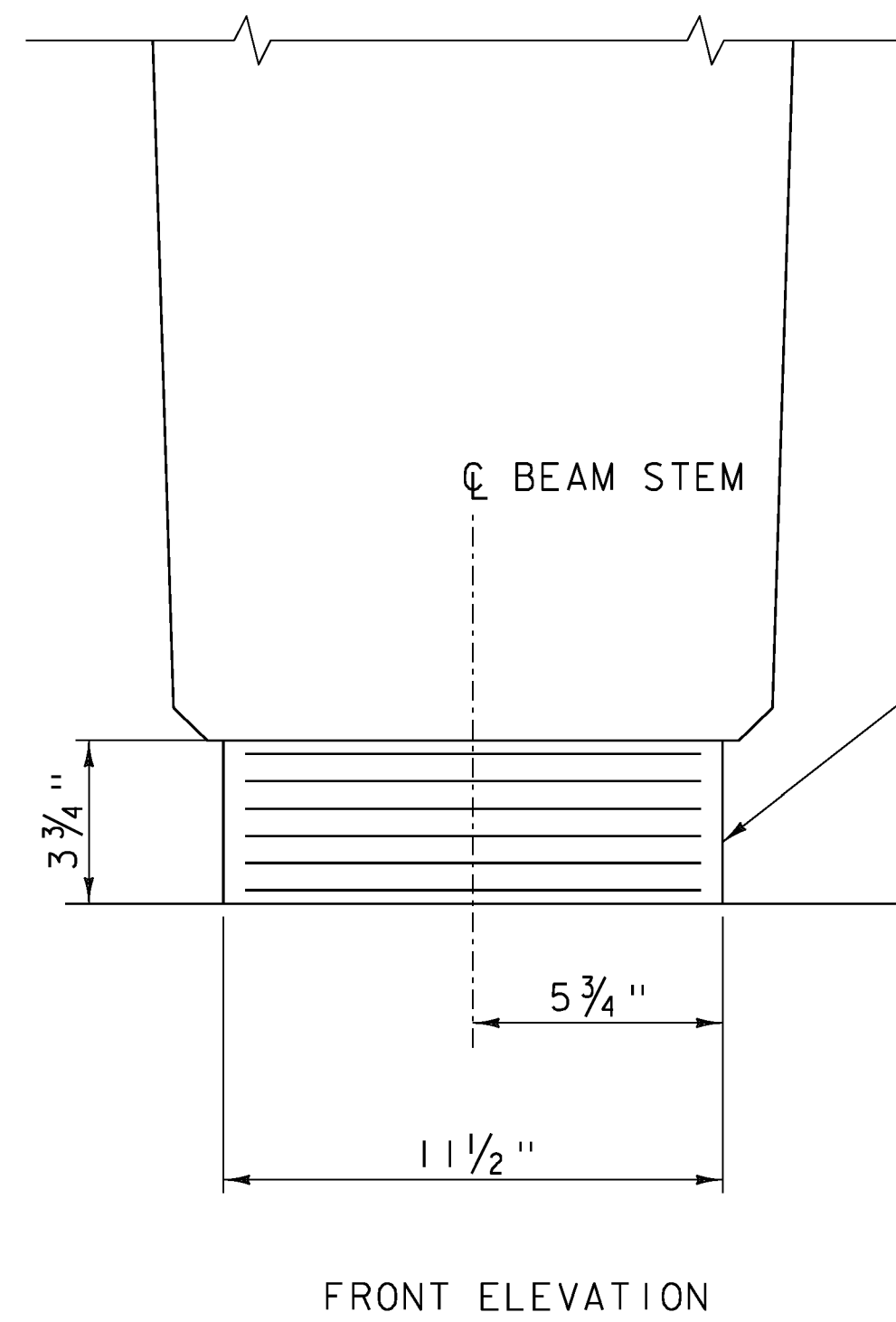
ELASTOMERIC BEARING DETAIL

SCALE: 3" = 1'-0"

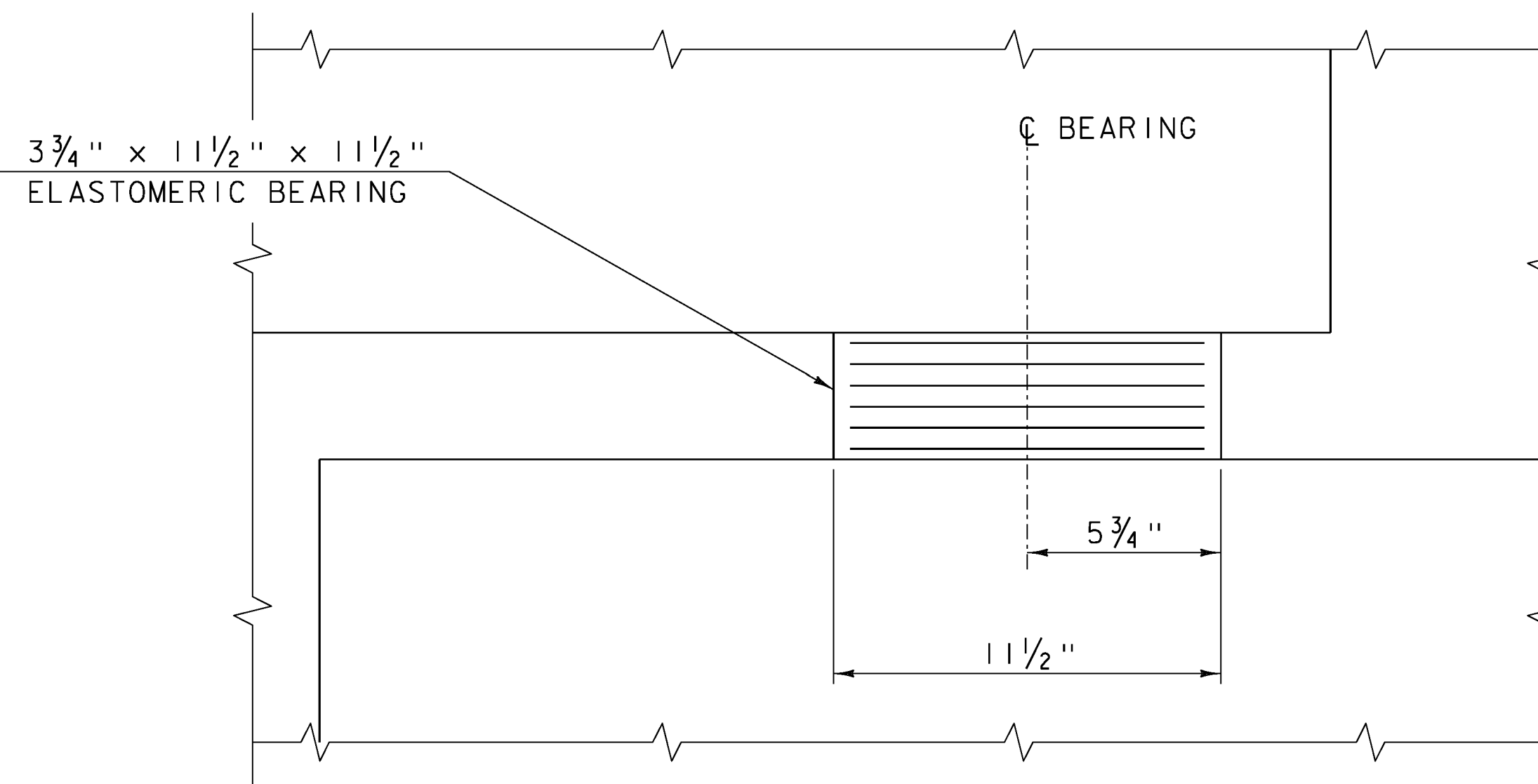
- 2 - 1/4" EXTERIOR LAYERS OF ELASTOMER
- 5 - 1/2" INTERIOR LAYERS OF ELASTOMER
- 6 - 1/8" STEEL REINFORCING PLATES

BEARING NOTES

1. BEARINGS SHALL CONFORM TO THE APPLICABLE SUBSECTIONS OF SECTIONS 531 AND 731 AND SHALL BE PAID UNDER CONTRACT ITEM 531.17.
2. ALL REINFORCEMENT BETWEEN LAYERS OF ELASTOMER SHALL BE STEEL MEETING THE REQUIREMENTS OF SUBSECTION 714.02. ALL INTERNAL STEEL PLATES SHALL BE SAND BLASTED AND FREE OF COATINGS, RUST AND MILL SCALE. THE PLATES SHALL BE FREE OF SHARP EDGES AND BURRS.
3. STEEL REINFORCED ELASTOMERIC BEARINGS SHALL HAVE A MINIMUM 1/4" EDGE SEAL OF ELASTOMER INTEGRAL WITH BEARING OVER ALL INTERNAL PLATES.
4. THE ELASTOMER WAS DESIGNED WITH A SHEAR MODULUS RANGE OF 130 PSI - 200 PSI.
5. THE ELASTOMER SHALL MEET THE REQUIREMENTS OF LOW TEMPERATURE ZONE D, GRADE 4.
6. THE CONTRACTOR IS ADVISED TO HAVE A MINIMUM OF 8 - 1/4" x 12 1/2" x 12 1/2" GALVANIZED STEEL SHIMS AVAILABLE FOR ELEVATION ADJUSTMENTS UPON THE SETTING OF THE SUPERSTRUCTURE UNITS. THE SHIMS SHALL BE FABRICATED ACCORDING TO SECTION 531 AND SHALL BE INCLUDED IN THE UNIT BID PRICE FOR CONTRACT ITEM 531.17.
7. DESIGN SERVICE LOADS PER BEARING: (DESIGN METHOD A)
 MAX DEAD LOAD: 30.5 K
 MAX LIVE LOAD: 30.4 K



FRONT ELEVATION



SIDE ELEVATION

ELASTOMERIC BEARING DETAIL

SCALE: 3" = 1'-0"

CLD 12-0175 MODEL: 04



PROJECT NAME: RANDOLPH
 PROJECT NUMBER: BRO 1444(57)

FILE NAME: z11j078sup.dgn
 PROJECT LEADER: J. BYATT
 DESIGNED BY: N. CARON
 BEARING DETAILS

PLOT DATE: 8/12/2014
 DRAWN BY: M. SMITH
 CHECKED BY: J. BYATT
 SHEET 23 OF 39