

T-WALL UNIT PROPERTIES

| UNIT TYPE | H | W | S | Tf* | Ts | SH | VOLUME* | WEIGHT* |
|-----------|------|-----------|----------|-----|----|------|---------|-----------|
| SP24 | 2'6" | 4'11 1/4" | 6'4 1/2" | 6" | 6" | 2'6" | 0.45 cy | 1,815 lbs |
| SP23 | 2'6" | 4'11 1/4" | 8'4 1/2" | 6" | 6" | 2'6" | 0.51 cy | 2,076 lbs |

*VOLUMES AND WEIGHTS ON THIS TABLE ARE BASED ON 6" FACE THICKNESS (Tf)

REBAR SCHEDULES

| SP24 | | | | | | | | HIGHWAY REBAR | |
|-------------|----------|-------|------|----------|---------|------------|----------|---------------|--|
| Unit Dims | Bar Mark | Qty | Size | Length | Dim "A" | Bar Weight | Bend Dia | Remarks | |
| H=2'6" | H-1 | 3 ea | #4 | 4'3 3/8" | | 8.57 lbs | | | |
| W=4'11 1/4" | V-1 | 12 ea | #4 | 2'2" | | 17.37 lbs | | | |
| S=6'4 1/2" | V-2 | 3 ea | #4 | 2'2" | | 4.34 lbs | | | |
| SH=2'6" | S-1 | 4 ea | #4 | 3'4 1/2" | | 9.02 lbs | D= 3" | | |
| | TB-1 | 2 ea | #4 | 8'2 7/8" | 5'11" | 11.01 lbs | D= 3" | | |
| | TB-2 | 2 ea | #4 | 7'11" | 5'11" | 10.58 lbs | D= 3" | | |
| | | | | | | 52.31 lbs | | | |

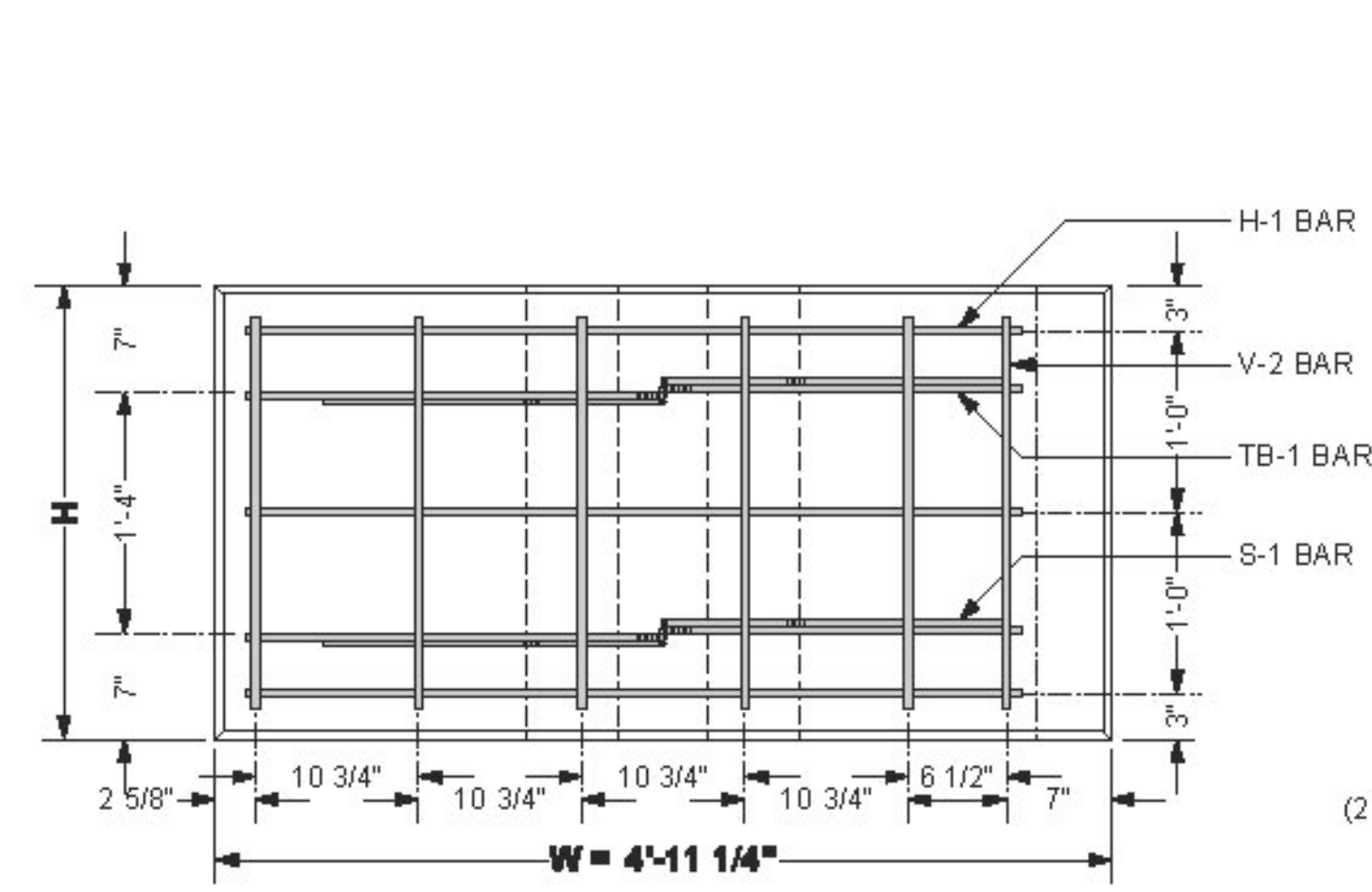
| SP23 | | | | | | | | HIGHWAY REBAR | |
|-------------|----------|-------|------|-----------|---------|------------|----------|---------------|--|
| Unit Dims | Bar Mark | Qty | Size | Length | Dim "A" | Bar Weight | Bend Dia | Remarks | |
| H=2'6" | H-1 | 3 ea | #4 | 4'3 3/8" | | 8.57 lbs | | | |
| W=4'11 1/4" | V-1 | 16 ea | #4 | 2'2" | | 23.16 lbs | | | |
| S=8'4 1/2" | V-2 | 3 ea | #4 | 2'2" | | 4.34 lbs | | | |
| SH=2'6" | S-1 | 4 ea | #4 | 3'4 1/2" | | 9.02 lbs | D= 3" | | |
| | TB-1 | 2 ea | #4 | 10'2 7/8" | 7'11" | 13.68 lbs | D= 3" | | |
| | TB-2 | 2 ea | #4 | 9'11" | 7'11" | 13.25 lbs | D= 3" | | |
| | | | | | | 63.45 lbs | | | |

SPECIAL NOTES:

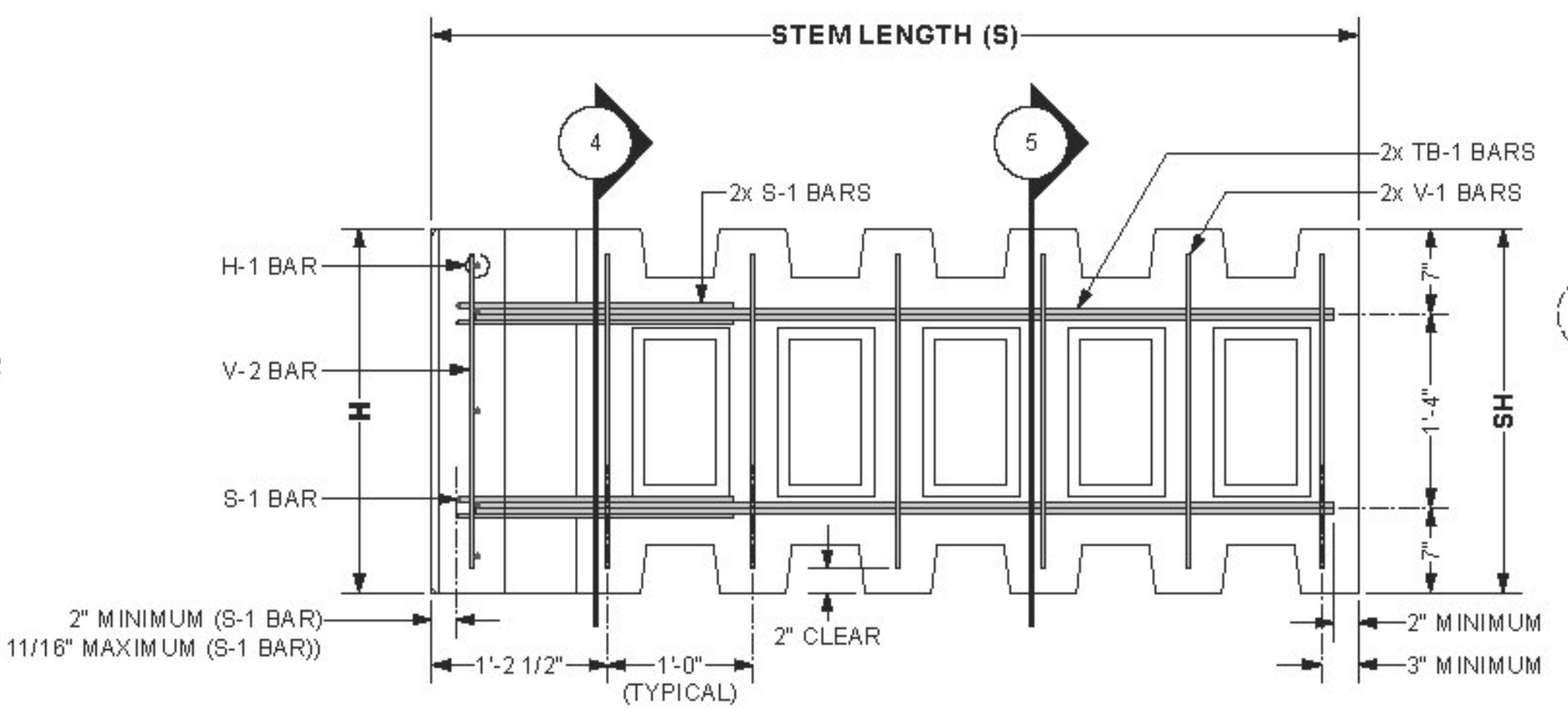
- FRONT FACE OF T-WALL@ UNITS FINISH TREATMENT:
 - PLAIN STEEL FORM FINISH

GENERAL NOTES:

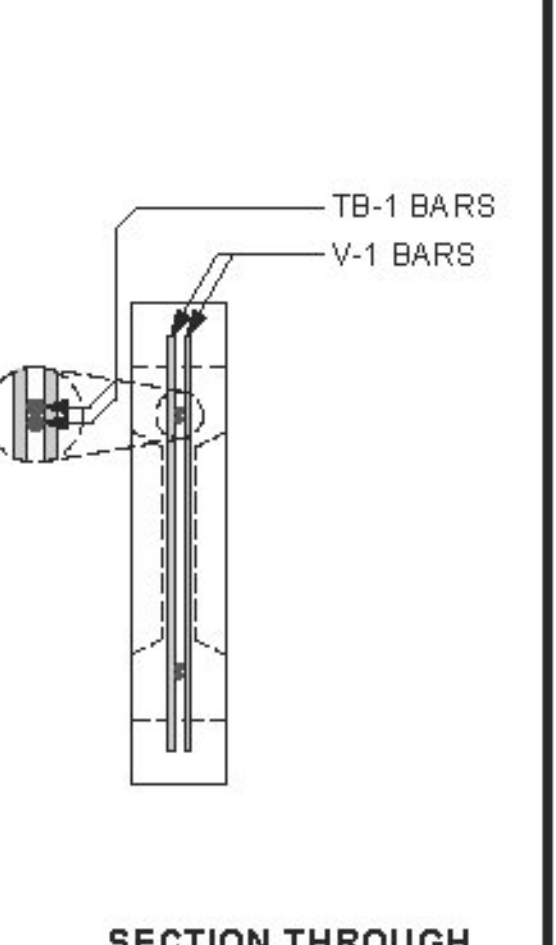
- PRIMARY REFERENCE:
 - AASHTO, LRFD BRIDGE DESIGN SPECIFICATION, 5TH EDITION 2010 (WITH INTERIMS)
- T-WALL@ CONCRETE:
 - F'c = 5000 psi (MINIMUM) @ 28 DAYS
 - MINIMUM STRIPPING STRENGTH: 2500 psi
- T-WALL@ REINFORCING STEEL:
 - BLACK
 - Fy = 60 ksi (GRADE 60)
 - WELDING IS NOT PERMITTED
- MARKING OF PRECAST UNITS:
 - CLEARLY MARK EACH PRECAST UNIT ON THE BUTT END OF THE STEM WITH THE UNIT TYPE (i.e. 2.5x5.0x06 STD), THE DATE OF MANUFACTURE, THE LOT NUMBER (IF APPLICABLE), AND THE TRADEMARK "T-WALL@".
- REINFORCING FABRICATION AND PLACEMENT TOLERANCES:
 - THE STRUCTURAL DESIGN OF PRECAST UNITS ASSUMES 2 INCHES OF CONCRETE COVER OVER ALL REINFORCING BARS.
 - UNLESS OTHERWISE NOTED IN CONTRACT DOCUMENTS OR REFERENCED SPECIFICATIONS, TOLERANCES ON CONCRETE COVER SHALL BE ± 3/8 INCHES.
 - UNLESS OTHERWISE NOTED IN CONTRACT DOCUMENTS OR REFERENCED SPECIFICATIONS, TOLERANCES ON BAR PLACEMENT SHALL BE:
 - VERTICAL LOCATION OF TB-1 BARS: ± 3/8 INCHES
 - LOCATION / SPACING OF H-1, V-1 & V-2 BARS: ± 1 INCH
 - REGARDLESS OF THE SPECIFIED PLACEMENT TOLERANCES, CONCRETE COVER SHALL BE MAINTAINED WITHIN ± 3/8 INCHES AS PREVIOUSLY NOTED.
 - ALL REINFORCING BARS SHALL BE CUT AND BENT FOLLOWING REQUIREMENTS OF THE CRSI MANUAL OF STANDARD PRACTICE.
 - UNLESS NOTED OTHERWISE, TOLERANCES FOR BAR FABRICATION SHALL MEET REQUIREMENTS OF STANDARD ACI 318 AND THE CRSI MANUAL OF STANDARD PRACTICE.



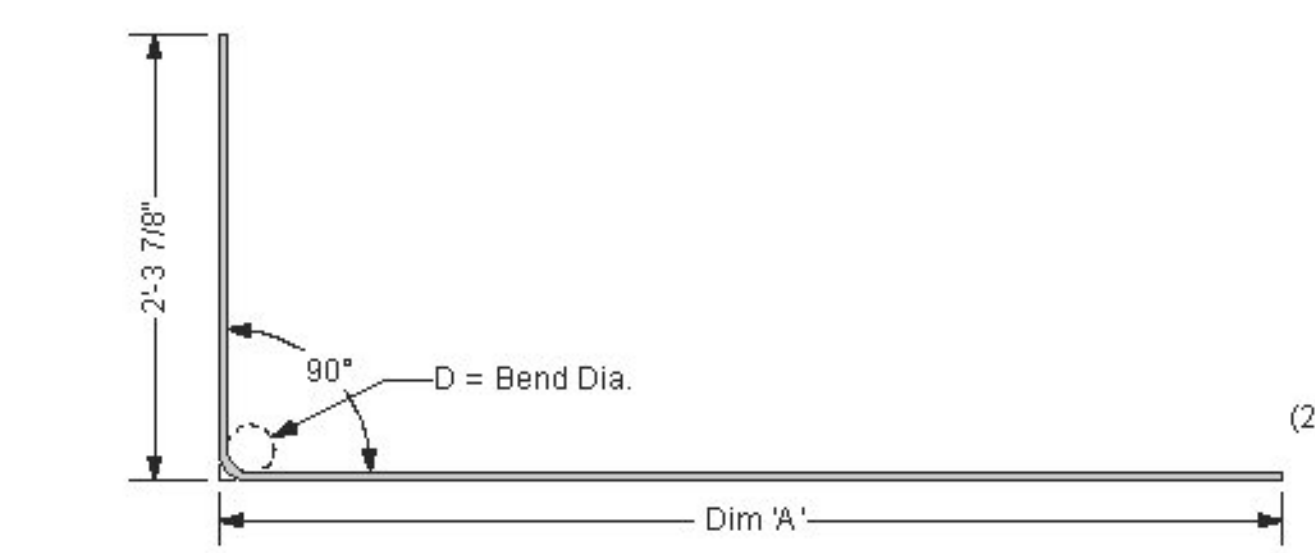
3 FRONT VIEW - 2.5 x 5.0 x 06 Std SHOWN Scale: 1" = 1'-0"



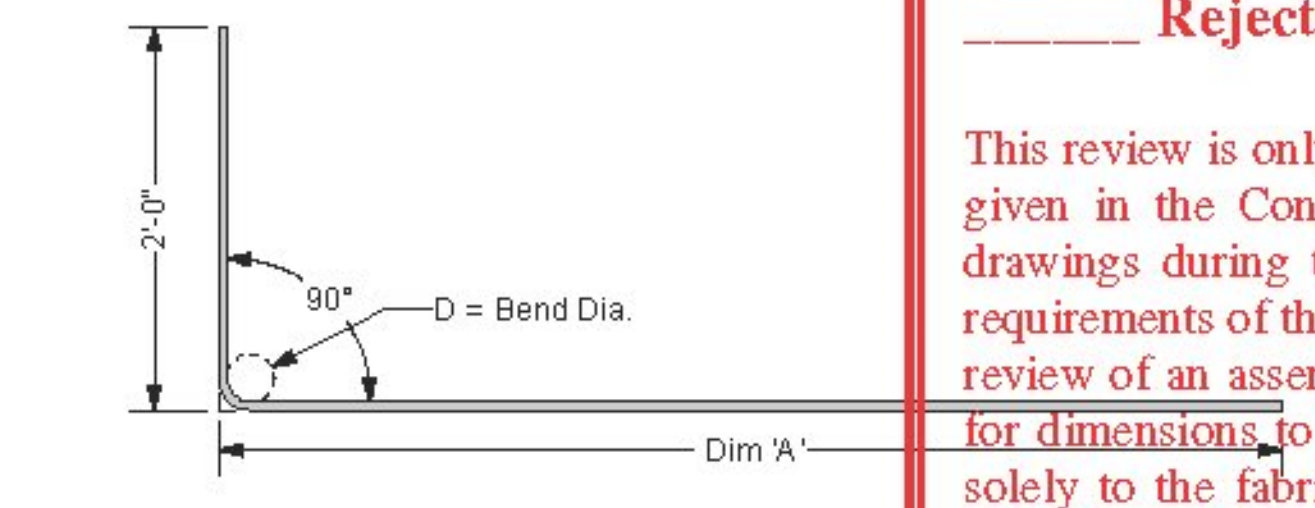
2 SIDE VIEW - 2.5 x 5.0 x 06 Std SHOWN Scale: 1" = 1'-0"



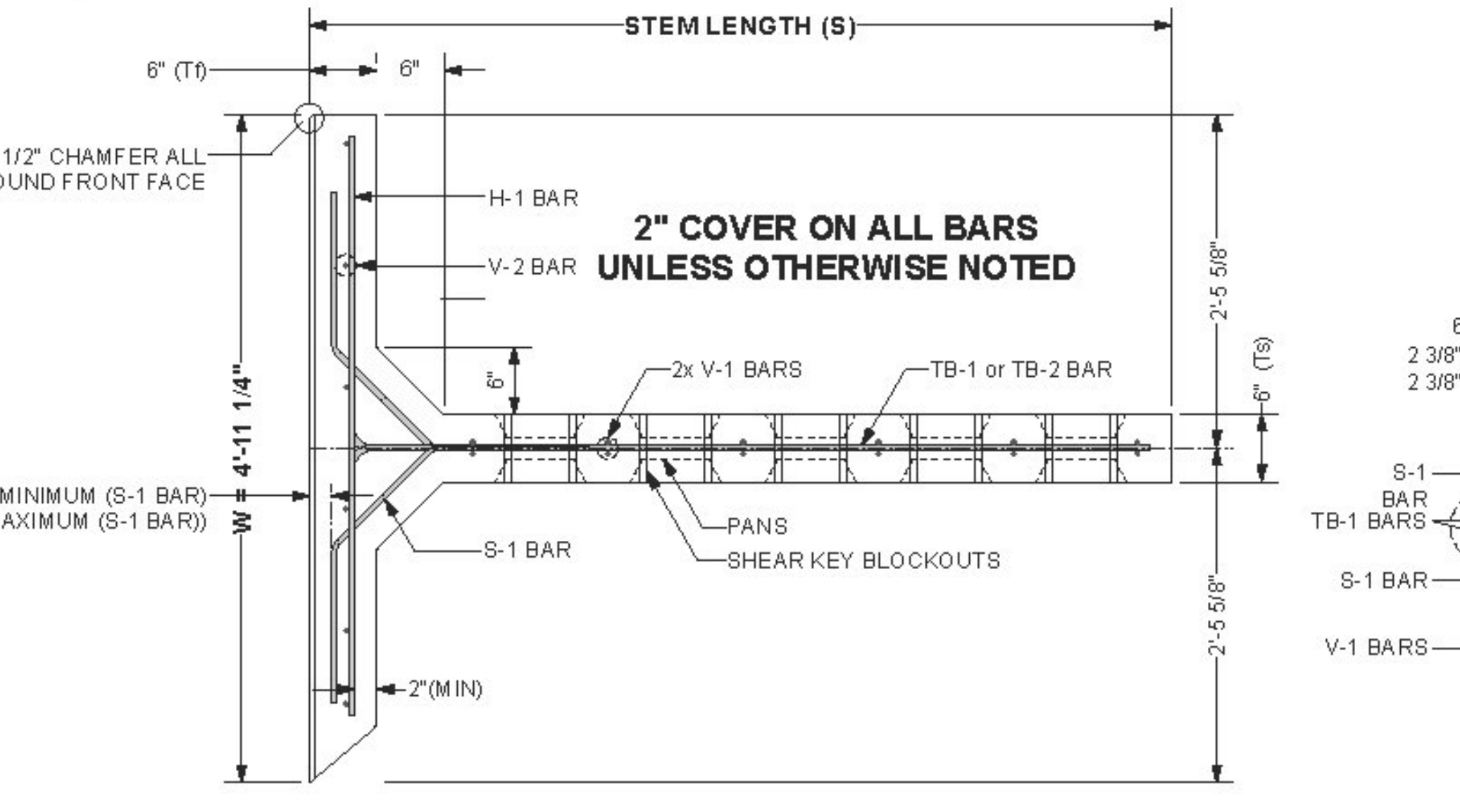
5 SECTION THROUGH STEM Scale: 1" = 1'-0"



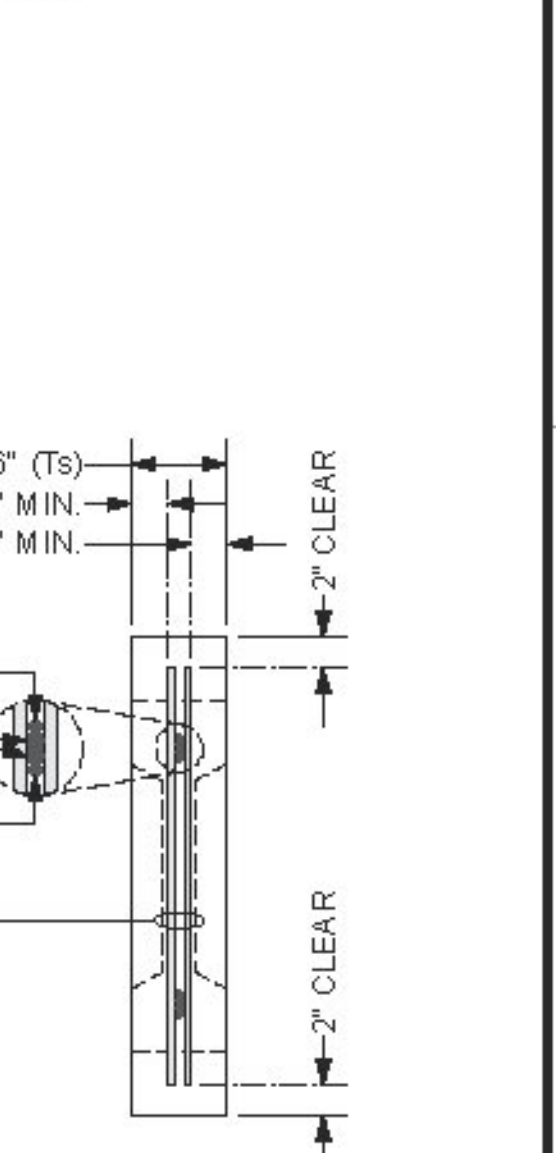
7 TB-1 REBAR Scale: 1" = 1'-0"



8 TB-2 REBAR Scale: 1" = 1'-0"



1 PLAN VIEW - 2.5 x 5.0 x 06 Std SHOWN Scale: 1" = 1'-0"



4 SECTION THROUGH STEM Scale: 1" = 1'-0"

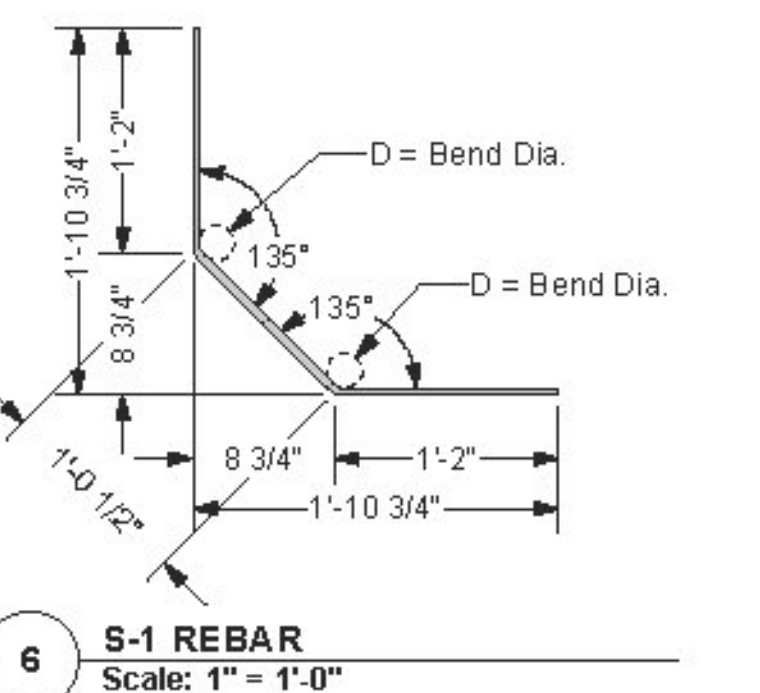
Approved
 Rejected

Approved As Noted

This review is only for general conformance with the design concept and the information given in the Construction Documents. Corrections or comments made on the shop drawings during the review do not relieve the Contractor from compliance with the requirements of the Plans and Specifications. Review of a specific item shall not include review of an assembly of which an item is a component. The Contractor is responsible for dimensions to be confirmed and corrected at the job site; information that pertains solely to the fabrication process or to the means, methods, techniques, sequences and procedures of construction; coordination of the Work with that of other trades and performing all Work in a safe and satisfactory manner.

Date 8/8/2014

McFarland Johnson
 By: T. Traver



6 S-1 REBAR Scale: 1" = 1'-0"



The design contained on these drawings is based upon information provided by the owner. On the basis of this information, The Neel Company has designed, and is responsible for, the internal stability of the structure only. External stability, including foundation and slope stability, is the responsibility of the owner.

This drawing contains information proprietary to The Neel Company. T-WALL@ is a registered trademark owned by The Neel Company. ©2014 The Neel Company

PRECASTER: CONCRETE SYSTEMS, INC. CSI
PROJECT #: T21882

CONTRACTOR: AL. ST. ONGE CONTRACTORS
PROJECT #:

DESIGNER
THE NEEL COMPANY
 8328-D TRAFORD LANE
 SPRINGFIELD, VIRGINIA 22152
 PH: (703) 913-7858
 FX: (703) 913-7859
 WEB: WWW.NEELCO.COM

PROJECT #: TW4301

CERTIFIED WITH R TO INTERNAL STATE T-WALL@ STRUCTURE

McFarland Johnson

RIGIDIFIED TUBE FRP ARCH (RTFA) PROJECT

FAIRFIELD, VT

SHOP DRAWINGS
 NARROW RIGHT BEVELED UNITS
 REBAR AND DIMENSIONS
 T-WALL@ RETAINING WALL SYSTEM

SCALE: AS NOTED
 DATE: 4/21/14
 DESIGNED BY: KD
 DRAWN BY: ABC
 CHECKED BY: CCG
 SHEET: 12