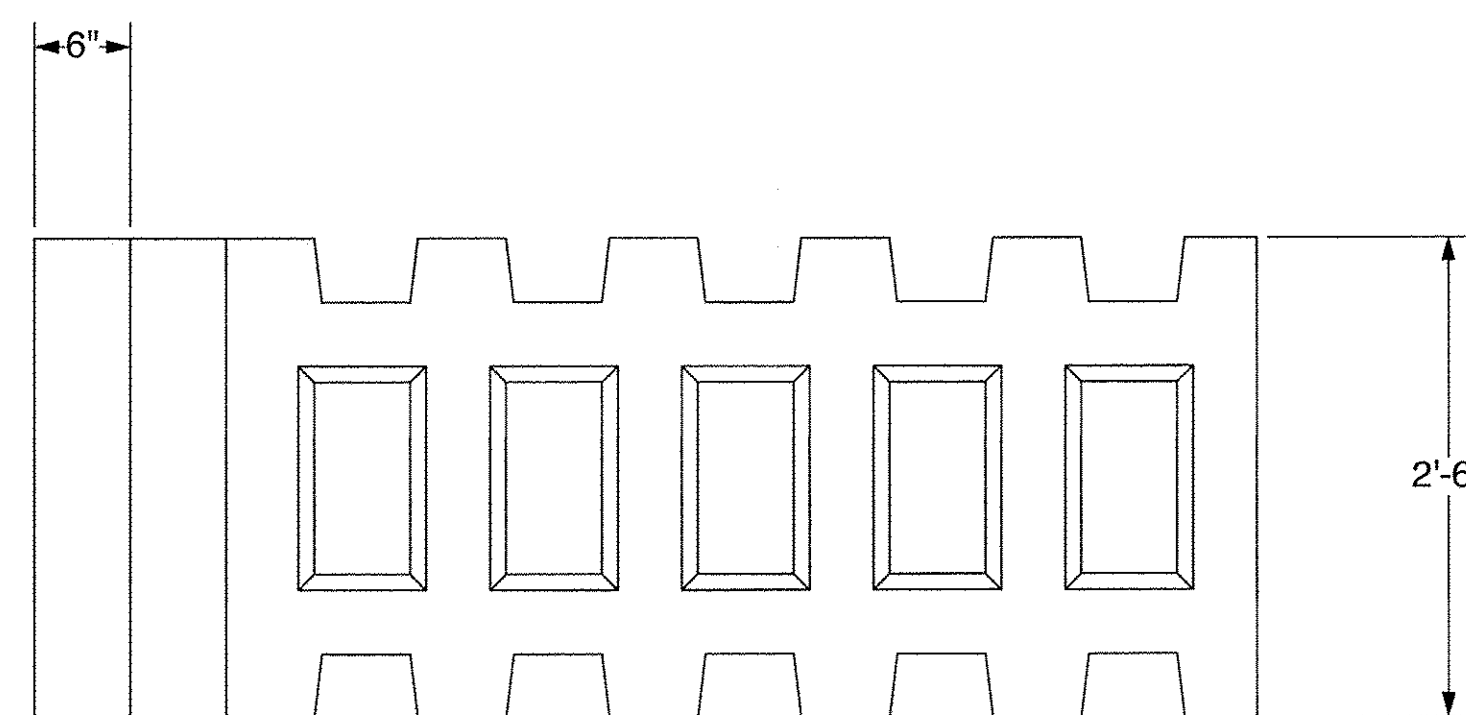
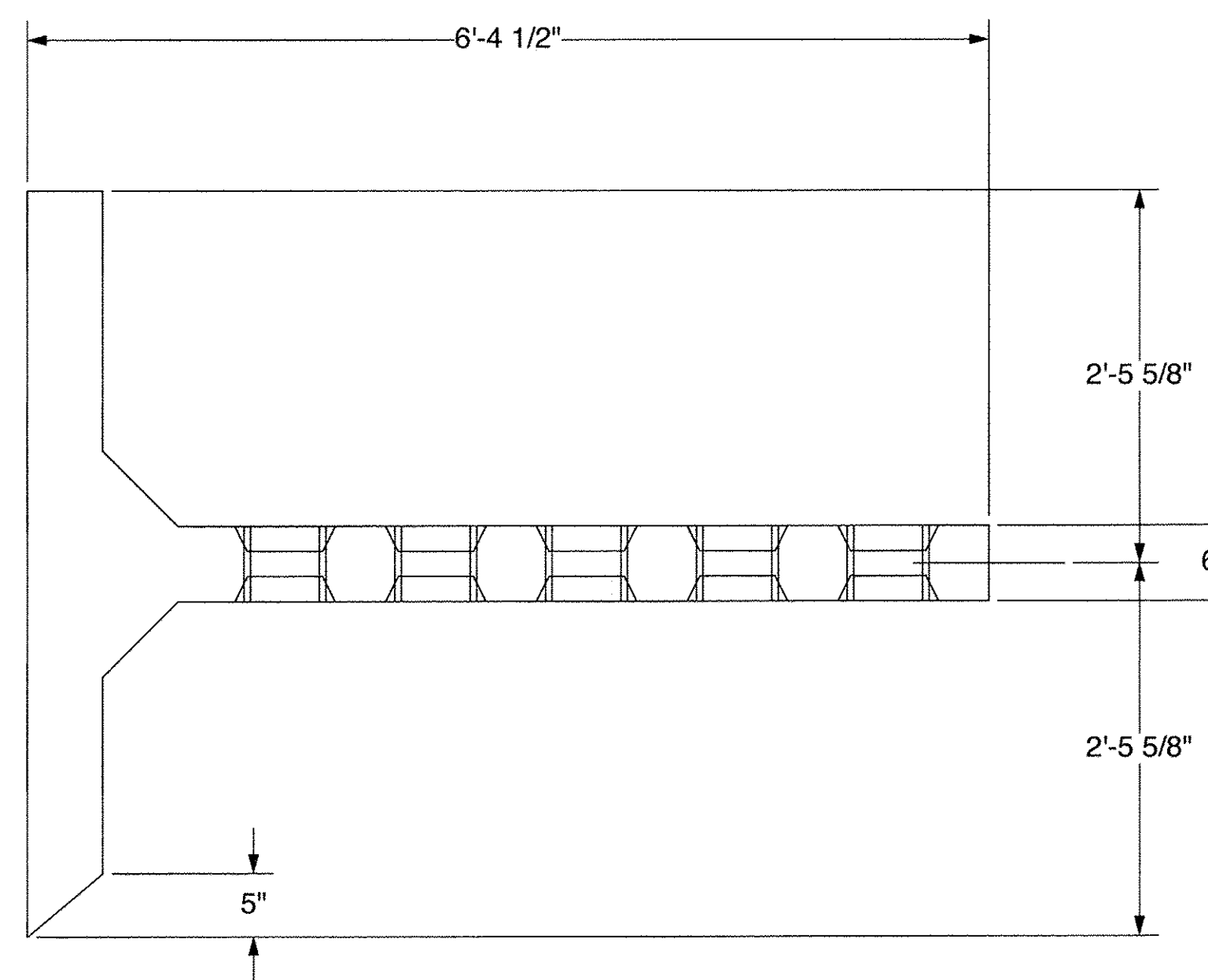


SP24 - FRONT VIEW



SP24 - SIDE VIEW



SP24 - PLAN VIEW

Approved                       Approved As Noted  
 Rejected

This review is only for general conformance with the design concept and the information given in the Construction Documents. Corrections or comments made on the shop drawings during the review do not relieve the Contractor from compliance with the requirements of the Plans and Specifications. Review of a specific item shall not include review of an assembly of which an item is a component. The Contractor is responsible for dimensions to be confirmed and corrected at the job site; information that pertains solely to the fabrication process or to the means, methods, techniques, sequences and procedures of construction; coordination of the Work with that of other trades and performing all Work in a safe and satisfactory manner.

Date 8/8/2014  
 By T. Traver

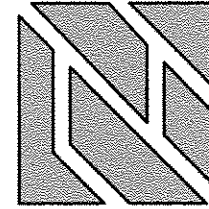
 **McFarland Johnson**



The design contained on these drawings is based upon information provided by the owner. On the basis of this information, The Neel Company has designed, and is responsible for, the internal stability of the structure only. External stability, including foundation and slope stability, is the responsibility of the owner.

This drawing contains information proprietary to The Neel Company. T-WALL® is a registered trademark owned by The Neel Company. ©2012 The Neel Company

PRECASTER: CONCRETE SYSTEMS, INC. HUDSON, NH PROJECT #: T21882
CONTRACTOR: PROJECT #:

**DESIGNER**  
 **THE NEEL COMPANY**  
 8328-D TRAFORD LANE  
 SPRINGFIELD, VIRGINIA 22152  
 PH: (703) 913-7858  
 FX: (703) 913-7859  
 WEB: WWW.NEELCO.COM  
 PROJECT #: TW4301

CERTIFIED WITH RESPECT TO INTERNAL STABILITY OF T-WALL® STRUCTURES ONLY

REVISIONS	

**FABRICATION DRAWING**  
**8-6-14**  
**RIGIDIFIED TUBE FRP ARCH (RTFA) PROJECT**  
 FAIRFIELD, VT  
 FABRICATION DRAWING  
 SPECIAL UNIT SP24  
 T-WALL® RETAINING WALL SYSTEM

SCALE:	1" = 1'-0"
DATE:	8-6-14
DESIGNED BY:	KD
DRAWN BY:	ABC
CHECKED BY:	KD
SHEET:	TW-FB24