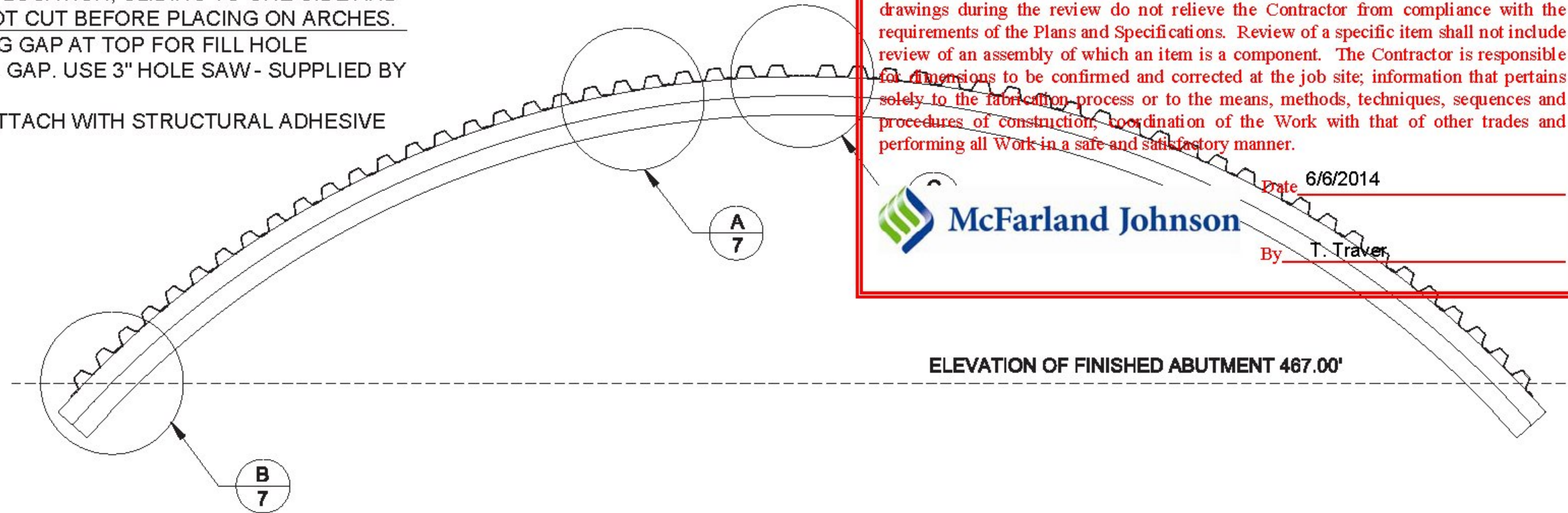
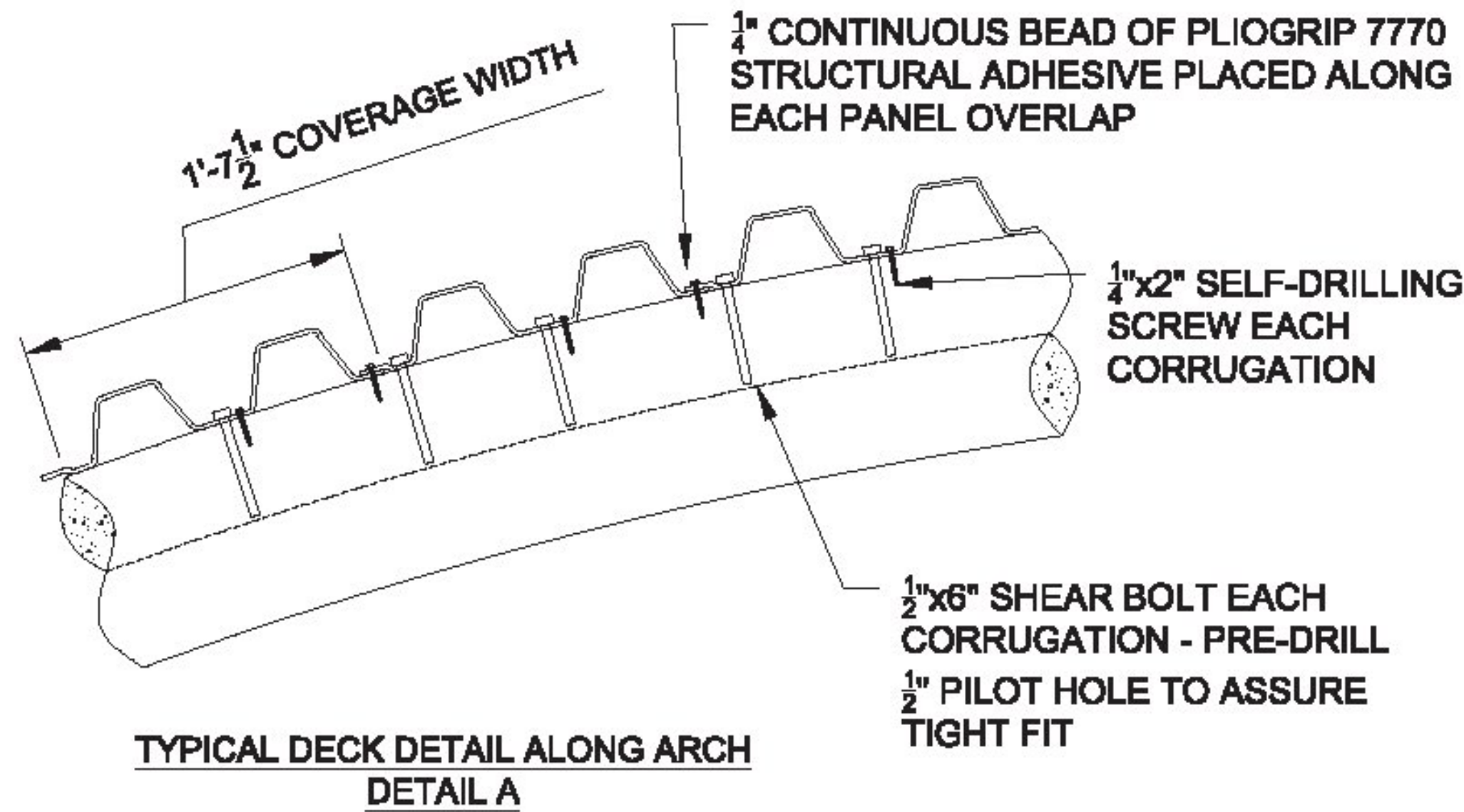


DECK NOTES:

1. PROJECT TO INCLUDE TWENTY-FIVE (25) ATLAS FRP DECK PANELS 42' LONG x 20.9" WIDE (19.5" COVERAGE WIDTH) x 3.7" DEEP
2. BRIDGE WIDTH TO BE SPANNED BY ONE PANEL - NO SPLICING
3. FIELD CUT PANELS TO PROPER LENGTH BY PLACING ON ARCHES, MARKING CUT LOCATION, SLIDING TO ONE SIDE AND CUTTING. IMPORTANT NOTE: EACH PANEL IS CUT AT A DIFFERENT ANGLE. DO NOT CUT BEFORE PLACING ON ARCHES.
4. ATTACH PANELS EACH SIDE OF ABUTMENT AND WORK TOWARD CROWN LEAVING GAP AT TOP FOR FILL HOLE
5. DRILL 3" DIAMETER ARCH CONCRETE FILLING HOLE ON SPINE AT CROWN WITHIN GAP. USE 3" HOLE SAW - SUPPLIED BY OTHER
6. FIELD CUT CLOSURE STRIP TO FILL GAP BETWEEN DECK PANELS AT CROWN - ATTACH WITH STRUCTURAL ADHESIVE AND SCREWS

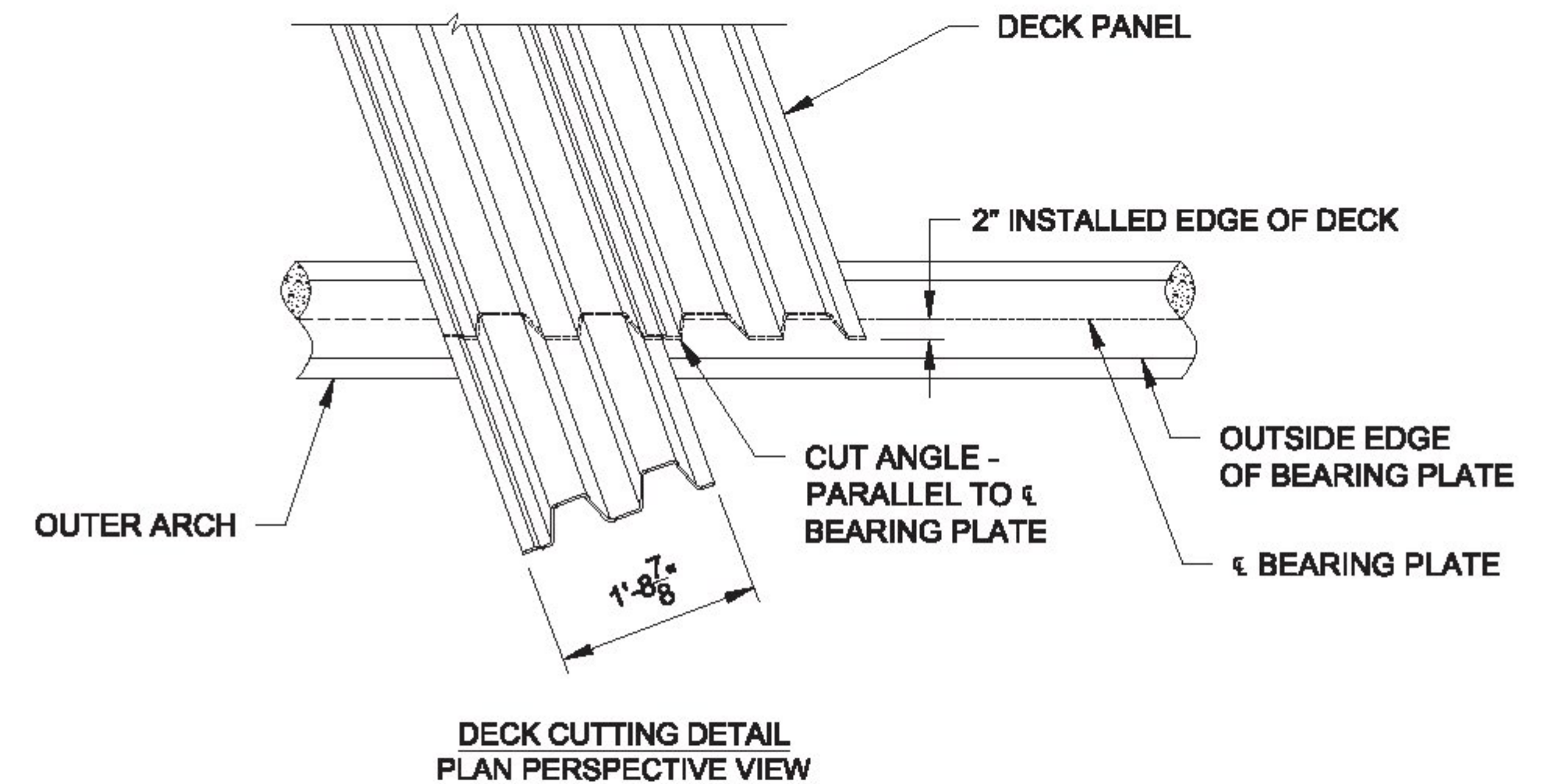
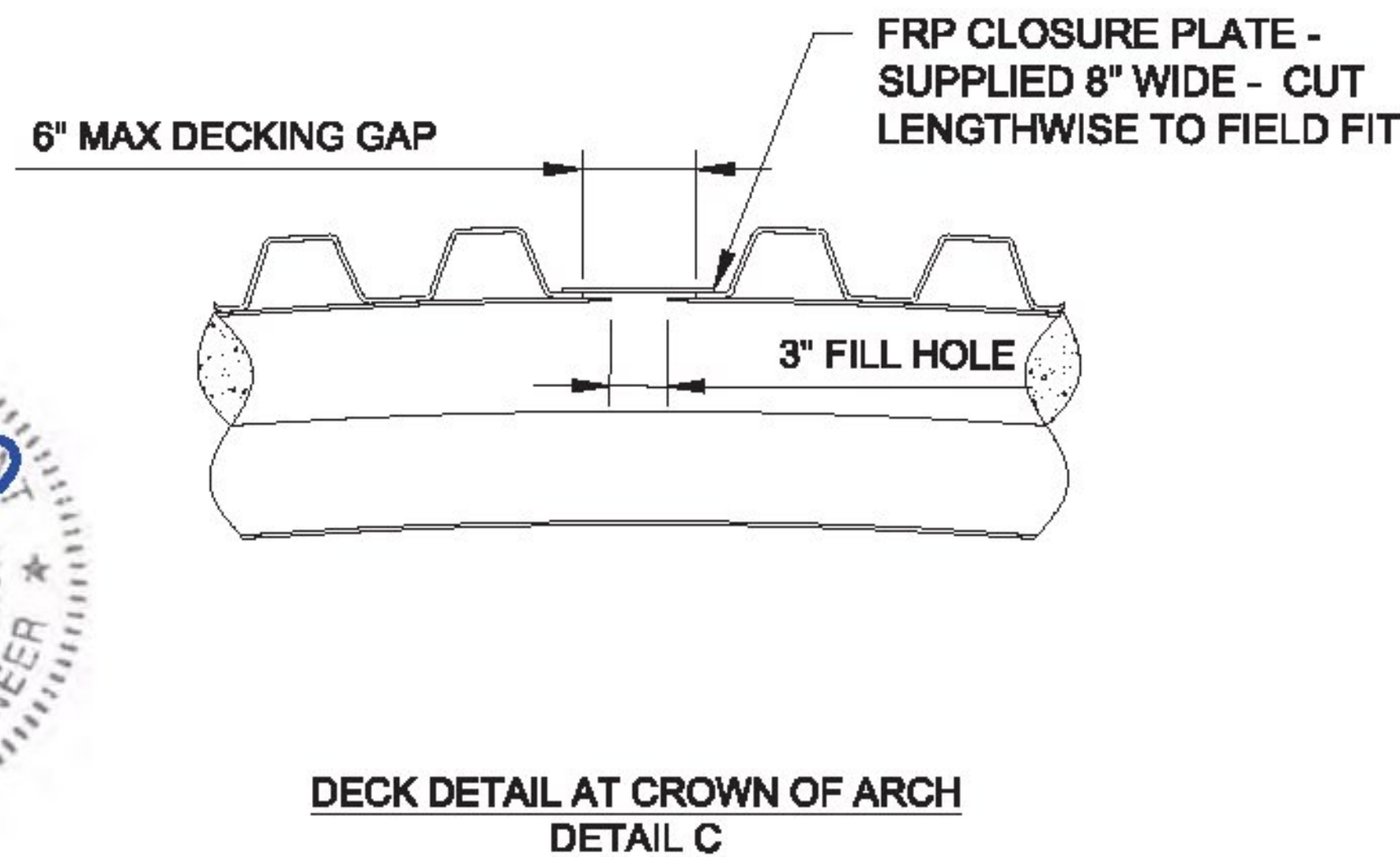
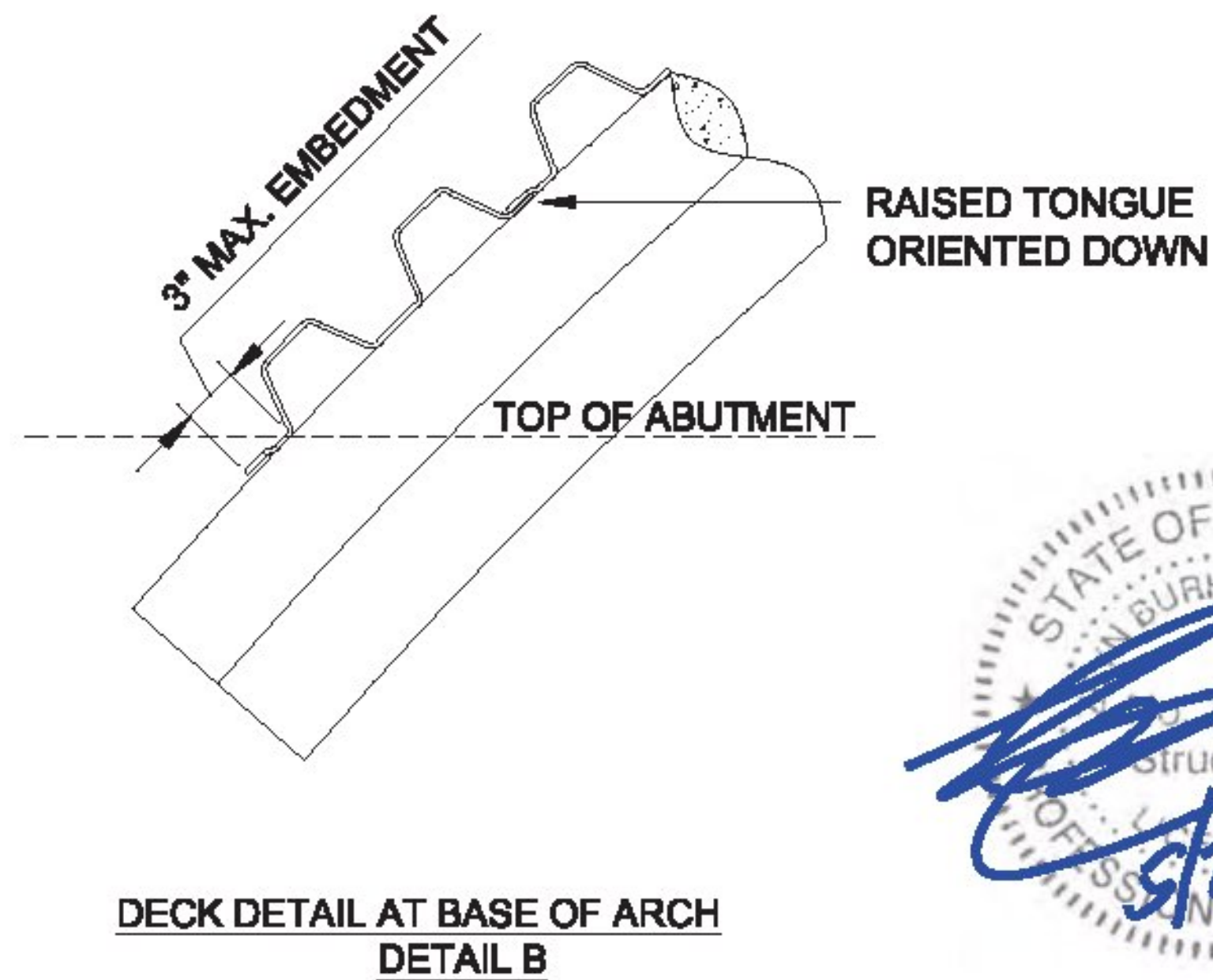


<input checked="" type="checkbox"/>	Approved	<input type="checkbox"/>	Approved As Noted
<input type="checkbox"/>	Rejected		

This review is only for general conformance with the design concept and the information given in the Construction Documents. Corrections or comments made on the shop drawings during the review do not relieve the Contractor from compliance with the requirements of the Plans and Specifications. Review of a specific item shall not include review of an assembly of which an item is a component. The Contractor is responsible for dimensions to be confirmed and corrected at the job site; information that pertains solely to the fabrication process or to the means, methods, techniques, sequences and procedures of construction, coordination of the Work with that of other trades and performing all Work in a safe and satisfactory manner.

McFarland Johnson

Date: 6/6/2014
By: T. Traver



ADVANCED INFRASTRUCTURE TECHNOLOGIES

20 Godfrey Drive
Orono, Maine 04473
Tel 207.866.6526
Fax 207.866.6501
www.aitbridges.com

PROJECT: Wanzer Road Bridge No. 48	TITLE: DECK DETAILS	SHEET NUMBER:
LOCATION: Fairfield, VT	JN: 12018	7 OF 10
DRAWING STATUS: Approved for Construction	INITIALS DATE	REV: 05-20-2014
Correct scale on size B paper (11x17 Ledger)	DRAWN BY: JEK 4-9-2014	
	DESIGNED BY: JEK 4-9-2014	
	CHECKED BY: ZU 5-20-2014	