

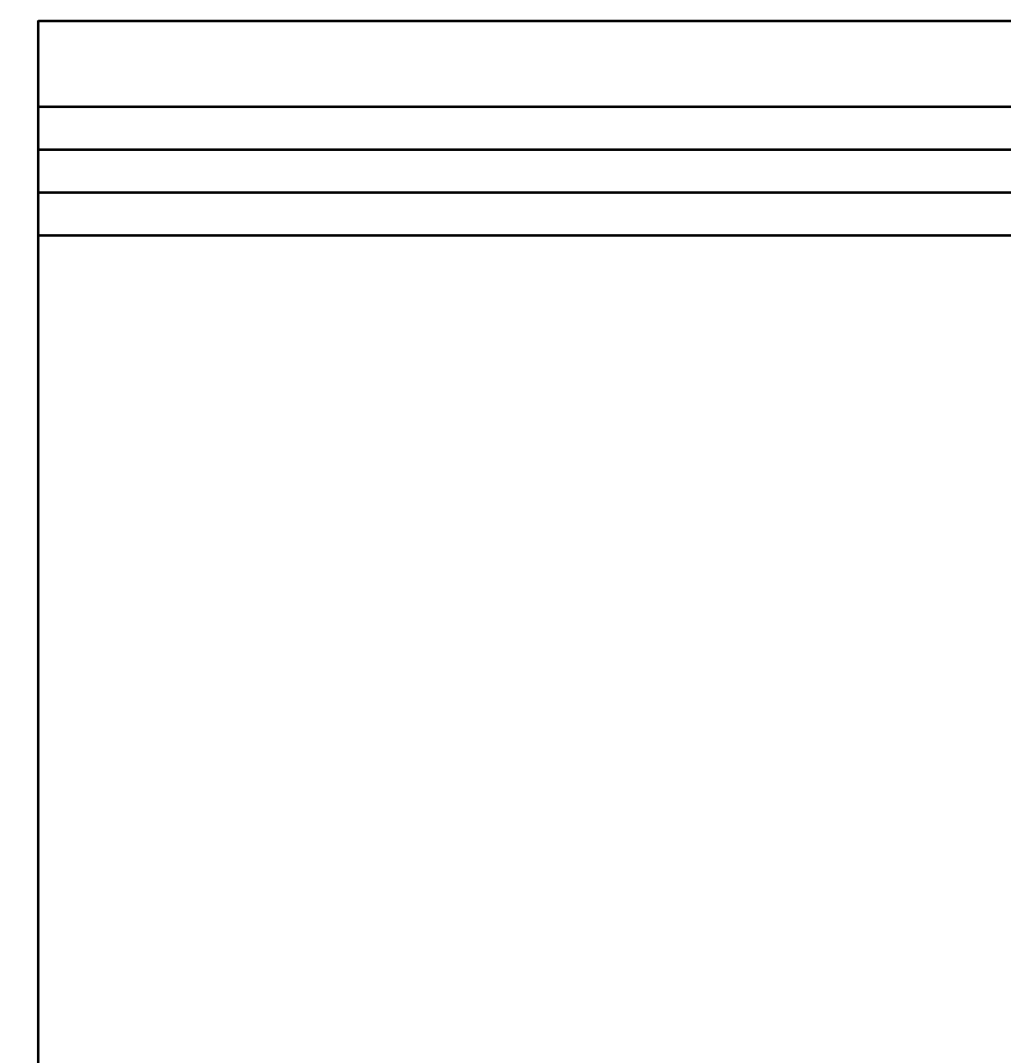
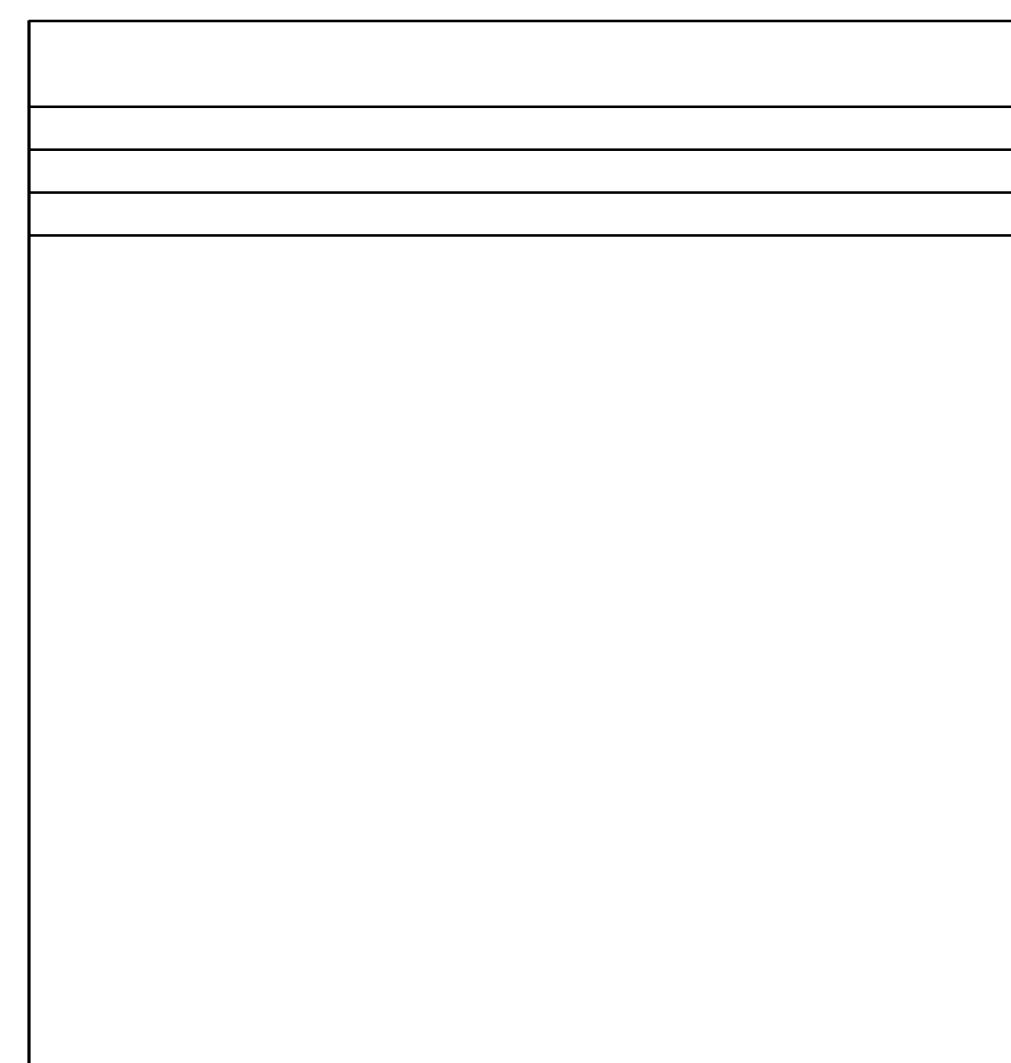
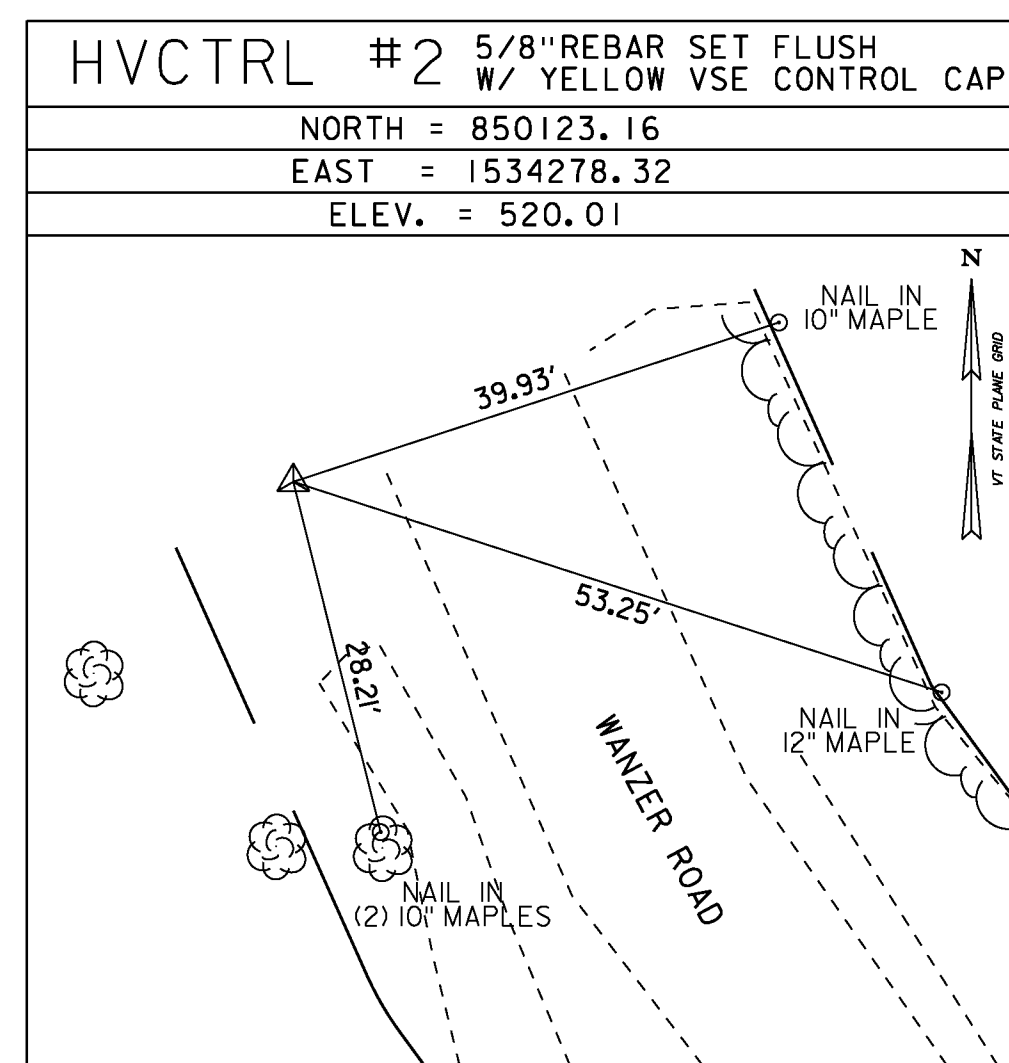
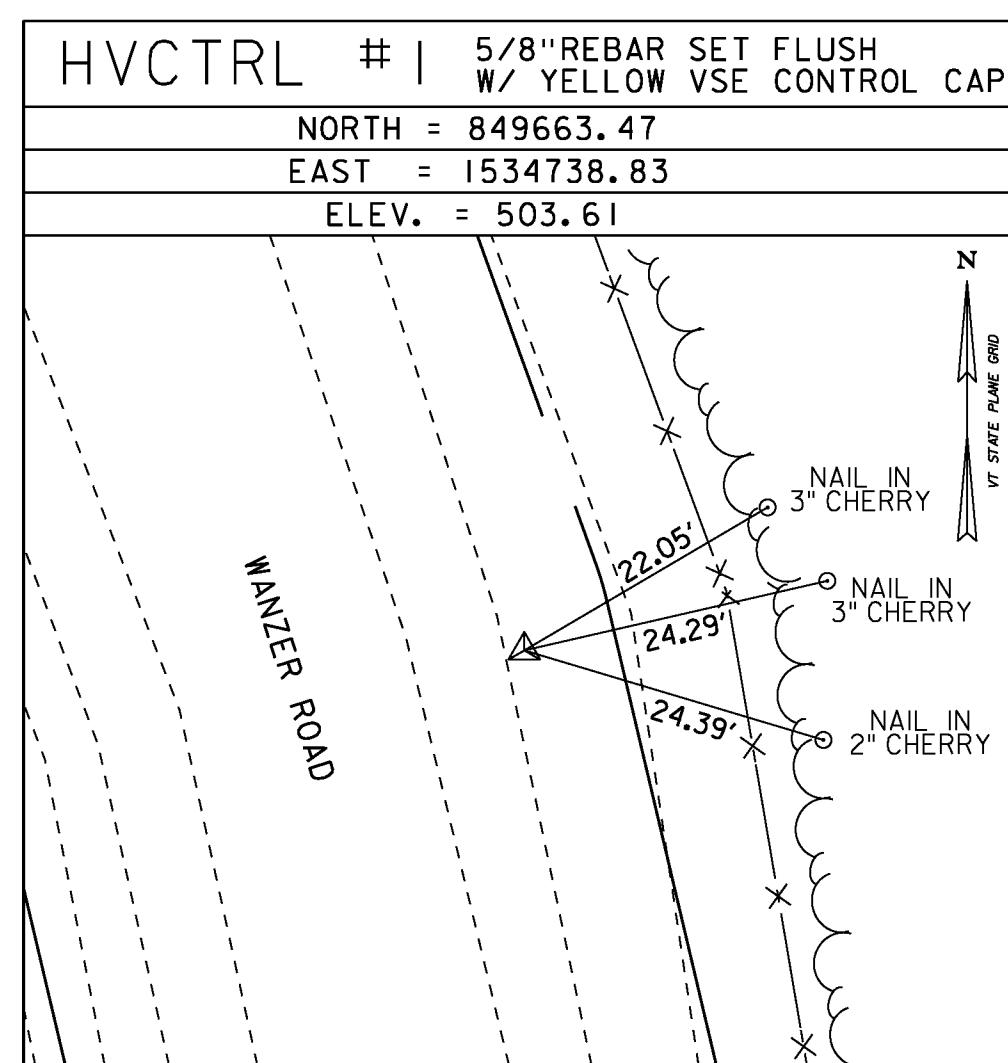
GPS/NGS CONTROL POINTS

**ST ALBANS CORS ARP**

PID DJ8959  
 N = 842210.22  
 E = 1489218.53  
 ELLIP HEIGHT = 480.184

STATION IS A GPS CONTINUOUSLY OPERATING REFERENCE STATION. STATION IS THE ANTENNA REFERENCE POINT OF THE GPS ANTENNA. LOCATED AT THE BELLOWS FREE ACADEMY IN ST. ALBANS, THE MONUMENT IS ATTACHED TO A TWO STORY CONCRETE/BRICK BUILDING WITH A 10 FT CONCRETE FOUNDATION BUILT IN THE MID 1960'S. THE MAST IS A 1.75 INCH DIA. GALV. PIPE THAT IS 108 INCHES LONG. THE MAST IS ATTACHED TO A STEEL MOUNTING FRAME WITH THREE ATTACHMENTS CONSISTING OF 3/8 INCH SS THROUGH BOLTS. THE MOUNTING FRAME IS ATTACHED TO THE BUILDING USING 8 ATTACHMENT POINTS. THE TOP 4 ARE 1/2 INCH SS BOLTS SECURED TO THE BRICK OR CONC WITH LEAD ANCHORS. THE BOTTOM 4 ATTACHMENTS ARE TROUGH BOLTED AND CONSIST OF 1/2 INCH SS THREADED ROD AND NUTS.

TRAVERSE TIES



\* MAIN TRAVERSE COMPLETED: MAY 2, 2012 BY VSE, T. CATTANEO-PC, T. COMSTOCK

ALIGNMENT COORD

ALIGNMENT COORDINATES							
WANZER ROAD TH 30				CHANNEL - WANZER BROOK			
	STATION	NORTHING	EASTING		STATION	NORTHING	EASTING
POB	10+00.00	850128.0944	1534291.7556	POB	200+00.00	849783.2935	1534503.8874
PI	10+36.60	850094.6860	1534306.6978	POE	202+00.00	849975.2278	1534560.1124
BEGIN APPROACH	10+75.00	850063.3121	1534328.8431				
PI	10+88.54	850052.2463	1534336.6538				
PI	11+54.29	850004.7730	1534382.1436				
PC	11+60.15	850000.6590	1534386.3094				
PT	13+22.20	849895.6804	1534509.5659				
PC	14+19.88	849837.9889	1534588.3887				
PT	16+81.59	849624.3569	1534729.9779				
END APPROACH	17+00.00	849606.4424	1534734.2034				
PI	17+00.17	849605.6933	1534734.3801				
PI	17+72.26	849535.0652	1534745.4735				
POE	18+19.91	849487.6476	1534750.1072				

DATUM  
 VERTICAL NAVD 88(GEIOD09) FT  
 HORIZONTAL NAD 83(CORS) SFT  
 ADJUSTMENT LSO



PROJECT NAME: FAIRFIELD  
 PROJECT NUMBER: BRO 1448(38)

FILE NAME: z11j0721e\_01.dgn  
 PROJECT LEADER: D. LANDRY  
 DESIGNED BY: VSE  
**TIE SHEET**

PLOT DATE: 01-NOV-2013  
 DRAWN BY: VSE  
 CHECKED BY: VSE  
 SHEET 9 OF 41