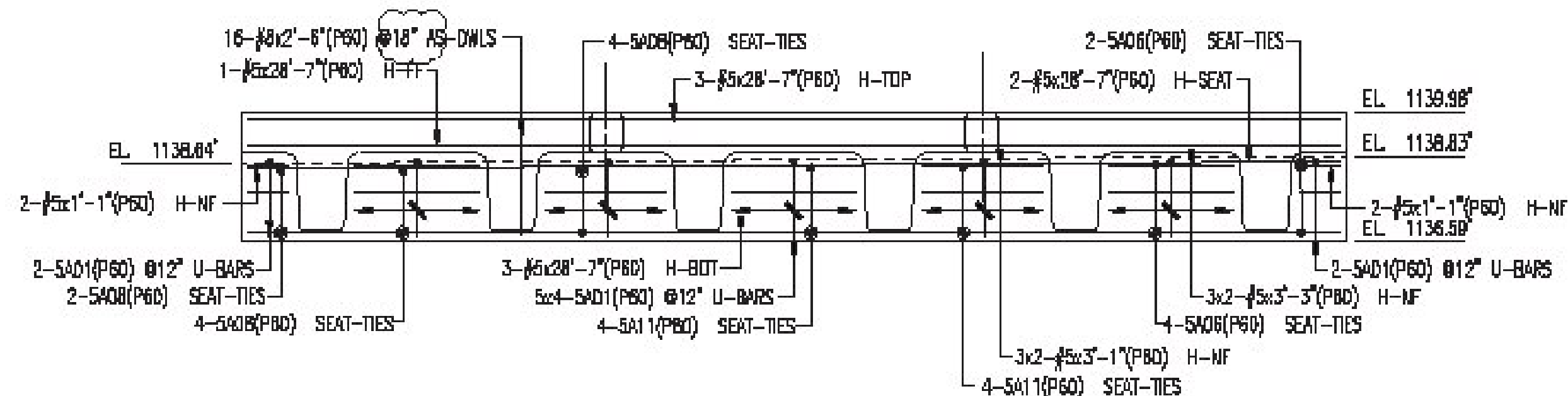
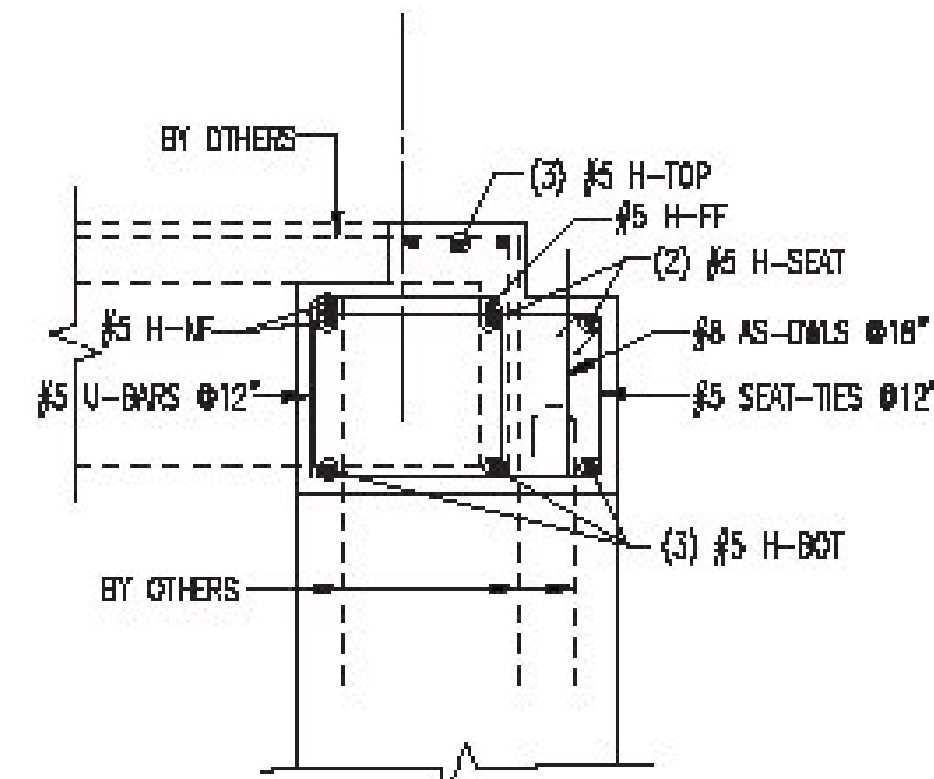


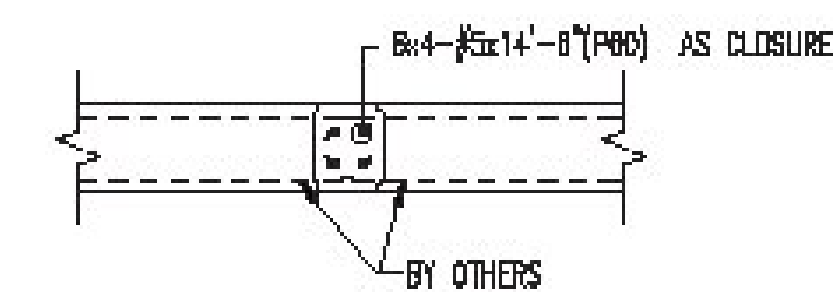
**ABUTMENT #1 CLOSURE POUR REINFORCEMENT**



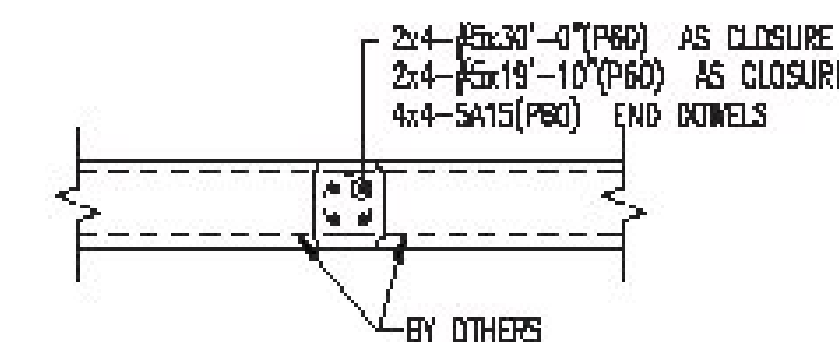
**ABUTMENT #2 CLOSURE POUR REINFORCEMENT**



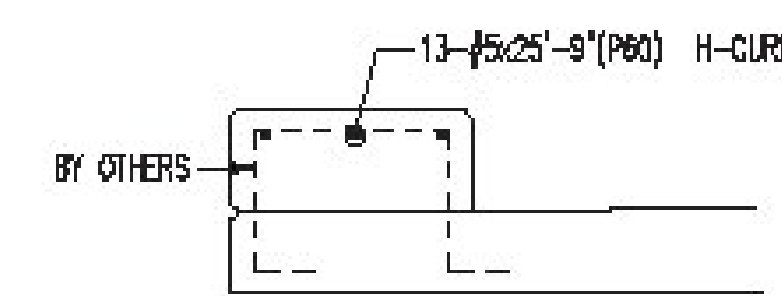
**TYPICAL ABUTMENT CLOSURE SECTION**



**APPROACH SLAB CLOSURES**  
(2) REQUIRED @ 15'-0"

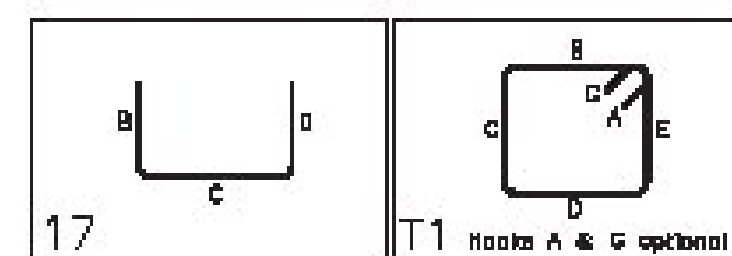


**DECK SLAB CLOSURES**  
(2) REQUIRED @ 47'-8"



**DECK CURB REINFORCEMENT**  
(2) REQUIRED @ 47'-8"

Bar Mark	Qty	Size	Total Length	Type	W	W'	W''	W'''	W''''	W'''''	W''''''	W'''''''	W''''''''	W'''''''''	W''''''''''
501	40	#5	1'-0"	17		2'-0"	2'-0"	2'-0"							
502	2	#5	1'-0"	11	5.2'	1'-0"	3'-0"	1'-0"	2'-0"						
503	4	#5	1'-0"	11	5.2'	1'-0"	3'-0"	1'-0"	2'-0"						
504	4	#5	1'-0"	11	5.2'	1'-0"	3'-0"	1'-0"	2'-0"						
505	4	#5	1'-0"	11	5.2'	1'-0"	3'-0"	1'-0"	2'-0"						
506	10	#5	1'-0"	11	5.2'	1'-0"	3'-0"	1'-0"	2'-0"						
507	1	#5	1'-0"	11	5.2'	1'-0"	3'-0"	1'-0"	2'-0"						
508	10	#5	1'-0"	11	5.2'	1'-0"	3'-0"	1'-0"	2'-0"						
509	4	#5	1'-0"	11	5.2'	1'-0"	3'-0"	1'-0"	2'-0"						
515	10	#5	1'-0"	17		2'-0"	2'-0"	2'-0"							



PLACING DRAWING APPROVAL AUTHORITY: VERIFICATION OF DIMENSIONS, DETAILS, ETC ARE REQUESTED WHERE INDICATED. IF EACH VERIFICATION IS NOT NOTED OTHERWISE, IT WILL BE ASSUMED TO BE CORRECT AS SHOWN.

ALL MATERIAL ON THIS DRAWING NOTED AS "P60" SHALL BE ASTM A1055 GRADE 60 DUAL COATED

Vermont Agency of Transportation

**RECEIVED**

ON: **May 13, 2015**

and Checked for

**CONFORMANCE**

BY: **Todd A. Sumner** DATE: **5/14/2015**

**SHOP DRAWING REVIEW**

REVIEWED AS REQUIRED BY THE CONSTRUCTION CONTRACT DOCUMENTS AND APPROVED, BUT ONLY FOR CONFORMANCE TO THE DESIGN CONCEPT OF THE WORK, AND SUBJECT TO FURTHER LIMITATIONS AND REQUIREMENTS CONTAINED IN THE CONSTRUCTION CONTRACT DOCUMENTS.

REJECTED     REVISE AND RESUBMIT     APPROVED AS NOTED

CORRECTIONS OR COMMENTS MADE ON THE SHOP DRAWINGS DURING THIS REVIEW DID NOT RELIEVE CONTRACTOR FROM COMPLIANCE REQUIREMENTS OF THE DRAWINGS AND SPECIFICATIONS. THIS CHECK IS ONLY FOR REVIEW OF GENERAL CONFORMANCE WITH THE DESIGN CONCEPT OF THE PROJECT AND GENERAL CONFORMANCE WITH THE INFORMATION ON P&I, THE CONTRACT DOCUMENTS. THE CONTRACTOR IS RESPONSIBLE FOR CONFIRMING AND CORRELATING ALL QUANTITIES AND DIMENSIONS; SELECTING FABRICATION PROCESSES AND TECHNIQUES OF CONSTRUCTION; COORDINATING THEIR WORK WITH THAT OF ALL OTHER TRADES; AND PERFORMING THEIR WORK IN A SAFE AND SATISFACTORY MANNER.

**CLD** Consulting Engineers  
540 Columbus Street  
North Ferris, NH 03041  
603-486-4225

Job Number: 12-11174  
Reviewed by: AE:G  
Date: 3/9/14-2015

No.	Description	Date	By
2	FINAL APPROVAL PRINT	05/13/15	CPS
0	APPROVAL PRINT	04/08/15	CPS

**Revisions and Issue Record**

The full intent and purpose of this drawing is the placing of reinforcing steel bars ONLY. It is NOT to be used as a means of communication between the Architect, Engineer, Contractor or any other Sub-trades.

**THIS DRAWING IS NOT TO BE SCALED.**

**HarrisRebar**  
National Strength. Local Service.

DETAILED AT:  
CANAN  
NEW HAMPSHIRE

**Project: BARTON BRO (1449)31  
BARTON VT**

**Drawing: BRIDGE CLOSURE POURS  
REINFORCEMENT**

**Customer: SICARD CONSTRUCTION**

**Engineer: CLD**

**Refer to Release:**

Date	Drawn	Chkd.	JOB No.	Dwg. No.
04/08/15	CPS		33505589	R01

W:\esample\Project\33505589\Placina Drawings\DWG\RO1.dwg