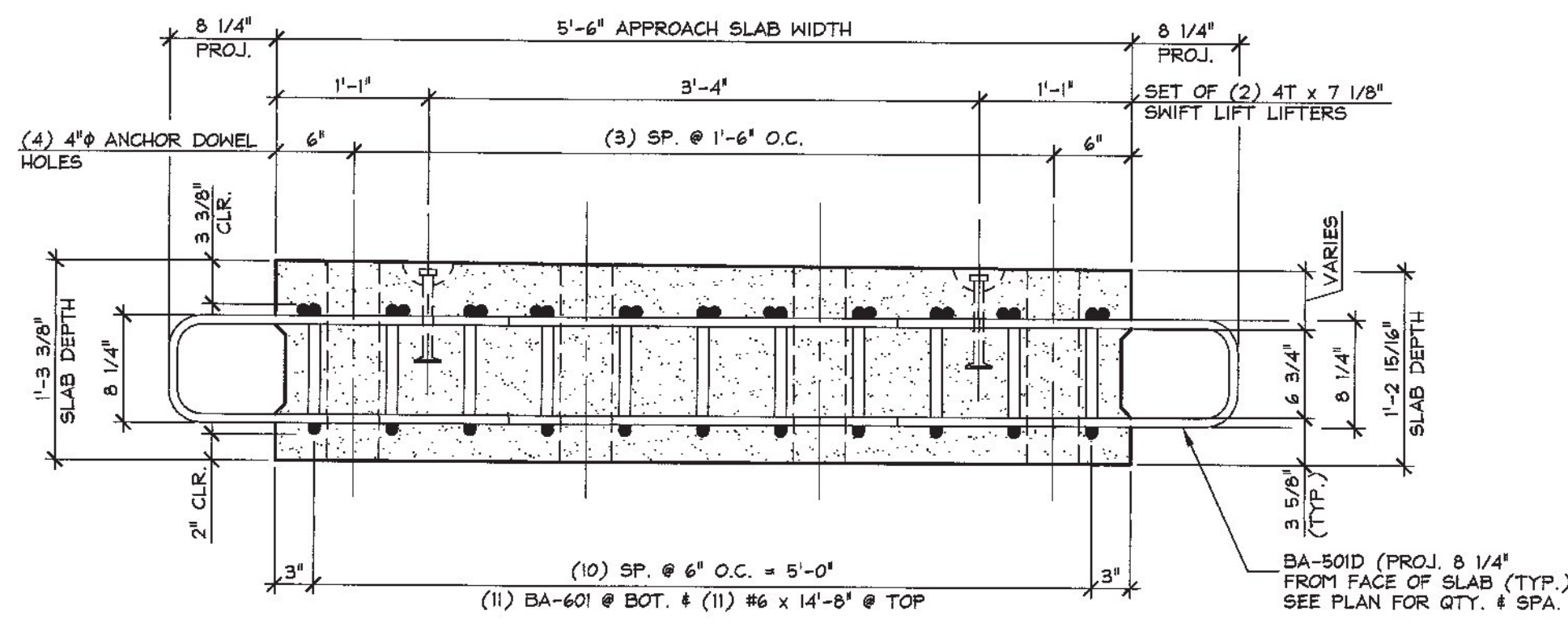
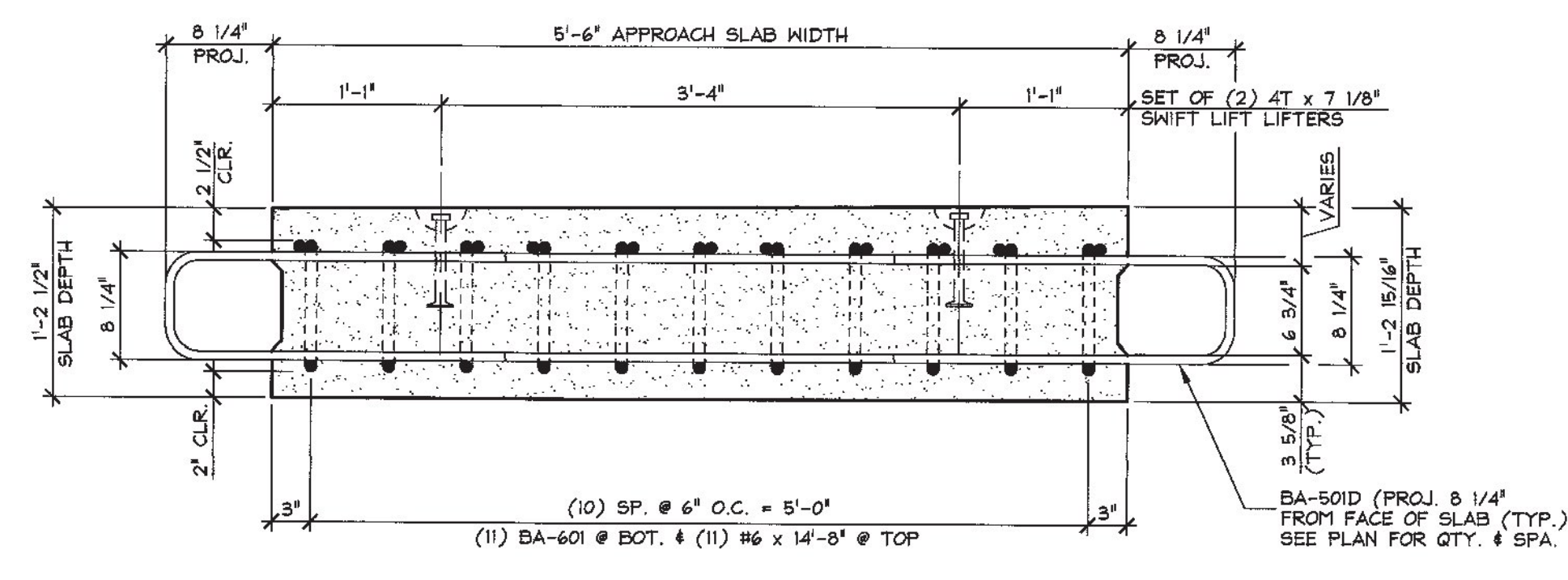


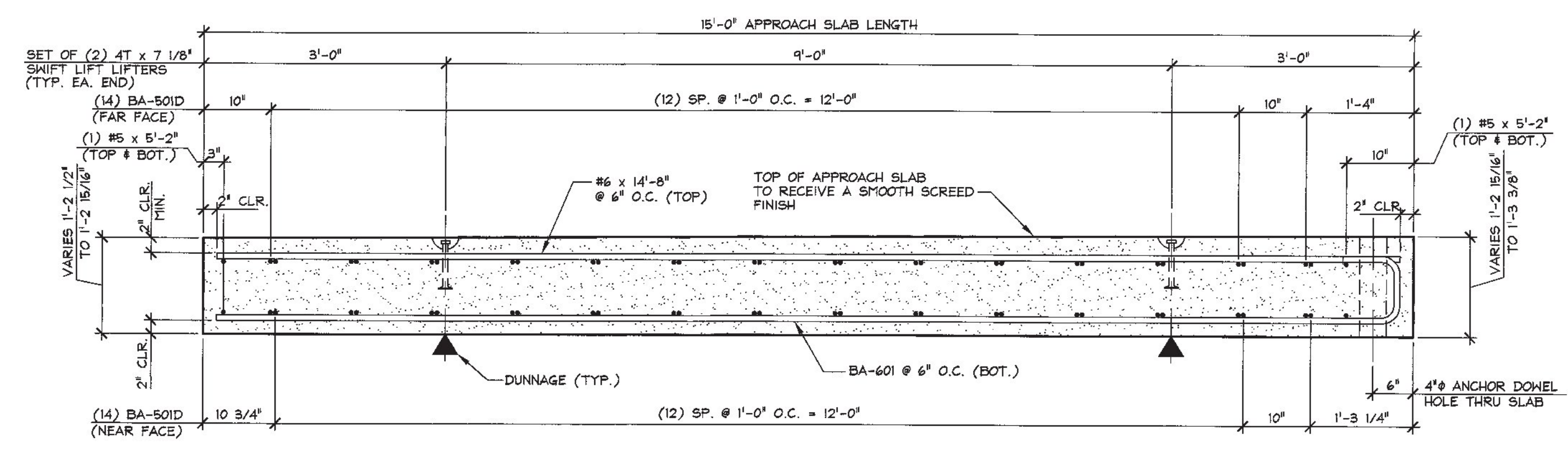
1 PLAN VIEW IN FORM
AS2
1/2" = 1'-0"



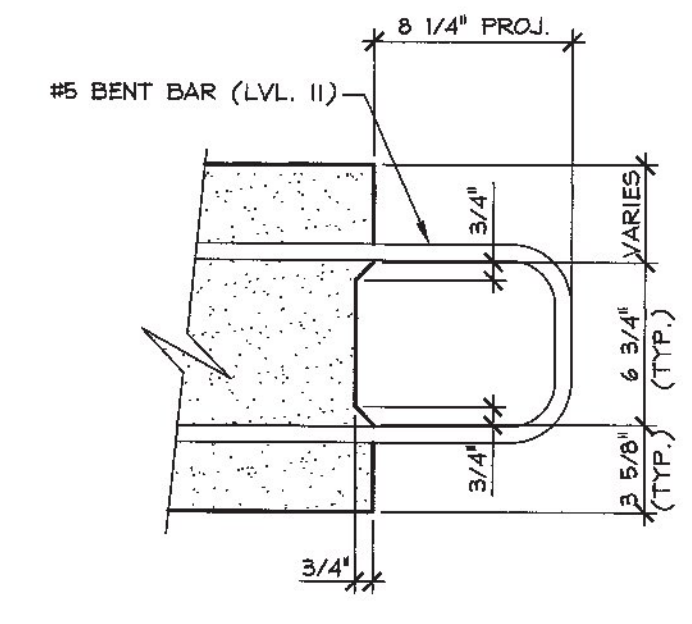
C SECTION
AS2
1" = 1'-0"



B SECTION
AS2
1" = 1'-0"



A LONGITUDINAL SECTION
AS2
3/4" = 1'-0"



SHEAR KEY DETAIL
1 1/2" = 1'-0"

MATERIAL LIST / APPROACH SLAB			
ITEM	MARK	DESCRIPTION	QTY.
1			
2	BA-501D	#5 BENT BAR (LEVEL II, DUAL COATED)	20
3	BA-601	#6 BENT BAR (LEVEL I)	11
4			
5			
6		#6 x 14'-8" (LEVEL I)	11
7		#5 x 5'-2" (LEVEL I)	4
8			
9			
10			
11			
12			
13			
14		DAYTON 4T x 7 1/8" SWIFT LIFT (DOMESTIC)	4
15			

SHOP DRAWING REVIEW

REVIEWED AS REQUIRED BY THE CONSTRUCTION CONTRACT DOCUMENTS AND APPROVED, BUT ONLY FOR CONFORMANCE TO THE DESIGN CONCEPT OF THE WORK, AND SUBJECT TO FURTHER LIMITATIONS AND REQUIREMENTS CONTAINED IN THE CONSTRUCTION CONTRACT DOCUMENTS.

REJECTED REVISE AND RESUBMIT APPROVED AS NOTED

CORRECTIONS OR COMMENTS MADE ON THE SHOP DRAWINGS DURING THIS REVIEW DO NOT RELIEVE CONTRACTOR FROM COMPLIANCE WITH REQUIREMENTS OF THE DRAWINGS AND SPECIFICATIONS. THIS CHECK IS ONLY FOR REVIEW OF GENERAL CONFORMANCE WITH THE DESIGN CONCEPT OF THE PROJECT AND GENERAL COMPLIANCE WITH THE INFORMATION OBTAINED IN THE CONTRACT DOCUMENTS. THE CONTRACTOR IS RESPONSIBLE FOR CONFIRMING AND CORRELATING ALL QUANTITIES AND DIMENSIONS; SELECTING FABRICATION PROCESSES AND TECHNIQUES OF CONSTRUCTION COORDINATING THEIR WORK WITH THAT OF ALL OTHER TRADES; AND PERFORMING THEIR WORK IN A SAFE AND SATISFACTORY MANNER.

GLD Consulting Engineers
940 Commercial Street
Burlington, VT 05401
802-888-8223

Job Number: 120174
Reviewed by: SRB
Date: 06/11/2015

5/28/2015 REVISED AS NOTED T.D.

APPROVAL STAMP:

J.P. CARRARA & SONS INC.
Precast & Prestress Manufacturer
244 CASE ST., MIDDLEBURY, VERMONT 05753 Phone: (802)388-6361 Fax: (802)388-9010

J.P. Sicard
CONTRACTOR
BARTON, VERMONT

STATE OF VERMONT AGENCY OF TRANSPORTATION
COUNTY OF ORLEANS

TOWN OF BARTON
ROARING BROOK ROAD TH #2, RURAL MINOR COLLECTOR
BRIDGE NO.: 8 PROJECT NO.: BRO 1449(31)

DATE: FEB. 25, 2015
SCALE: NOTED
CHKD: DFTM: T.D.
JOB NO: 23462-015
DWG. NO: AS2