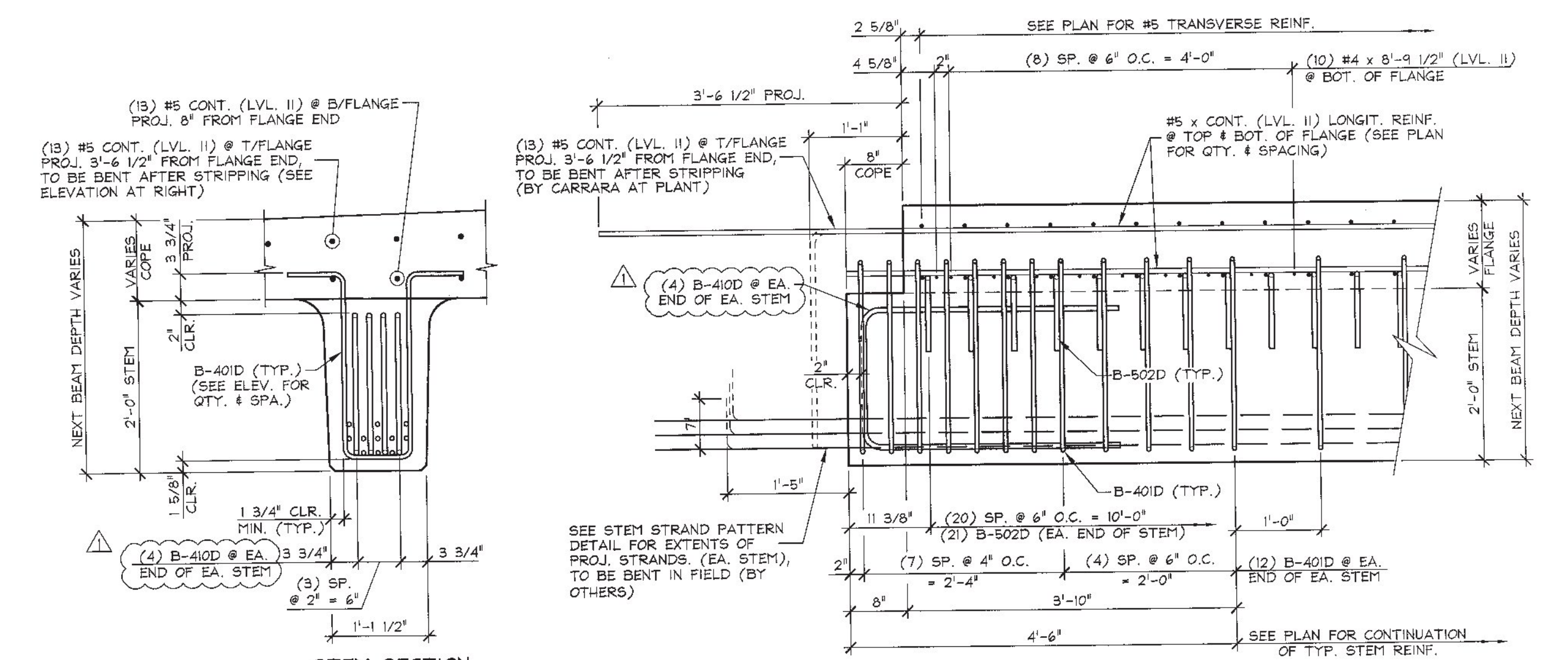
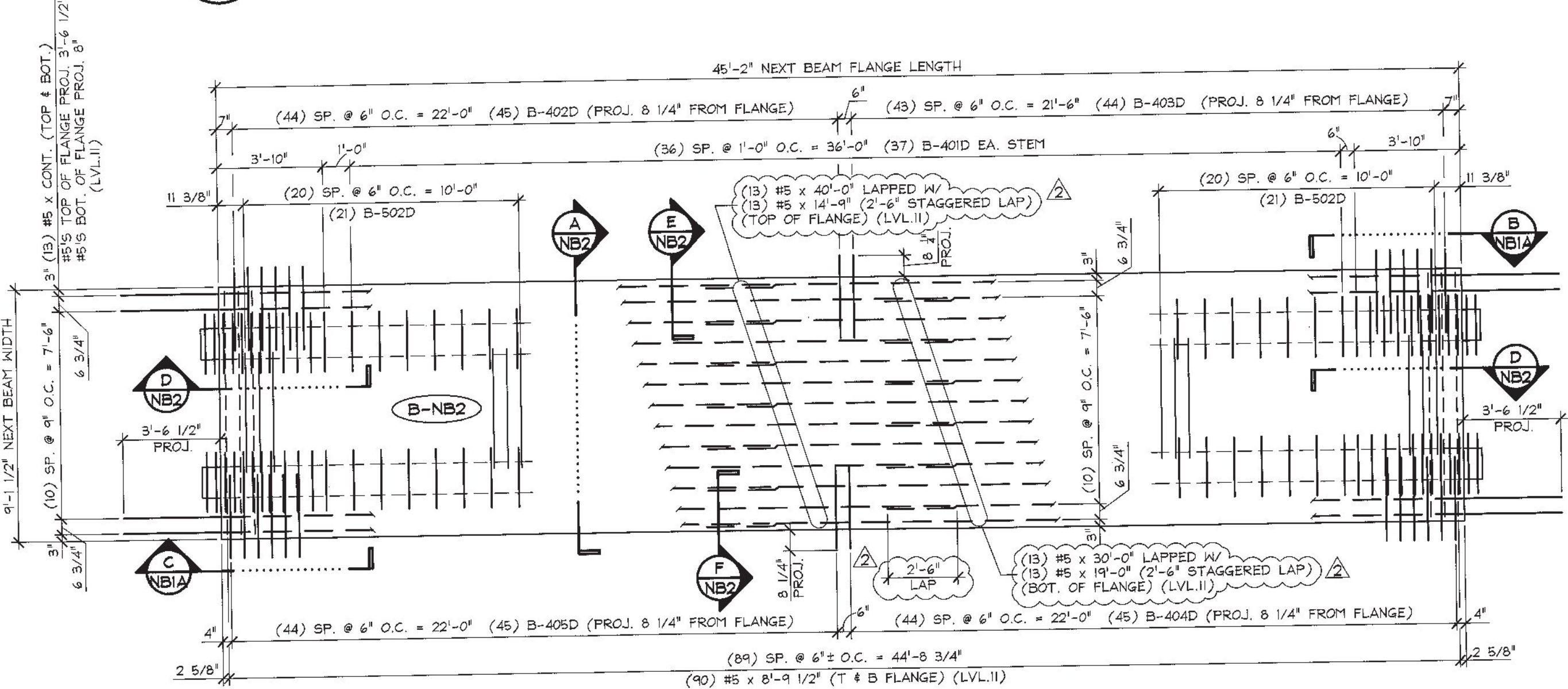


1 DIMENSIONAL PLAN VIEW IN FORM NB2 1/4" = 1'-0"

SHOP NOTE: SEE DWG. NB1A FOR SHEAR KEY ELEVATIONS



D END BLOCK STEM REINFORCING DETAILS NB2 3/4" = 1'-0"



2 REINFORCING PLAN VIEW IN FORM NB2 1/4" = 1'-0"

SHOP DRAWING REVIEW

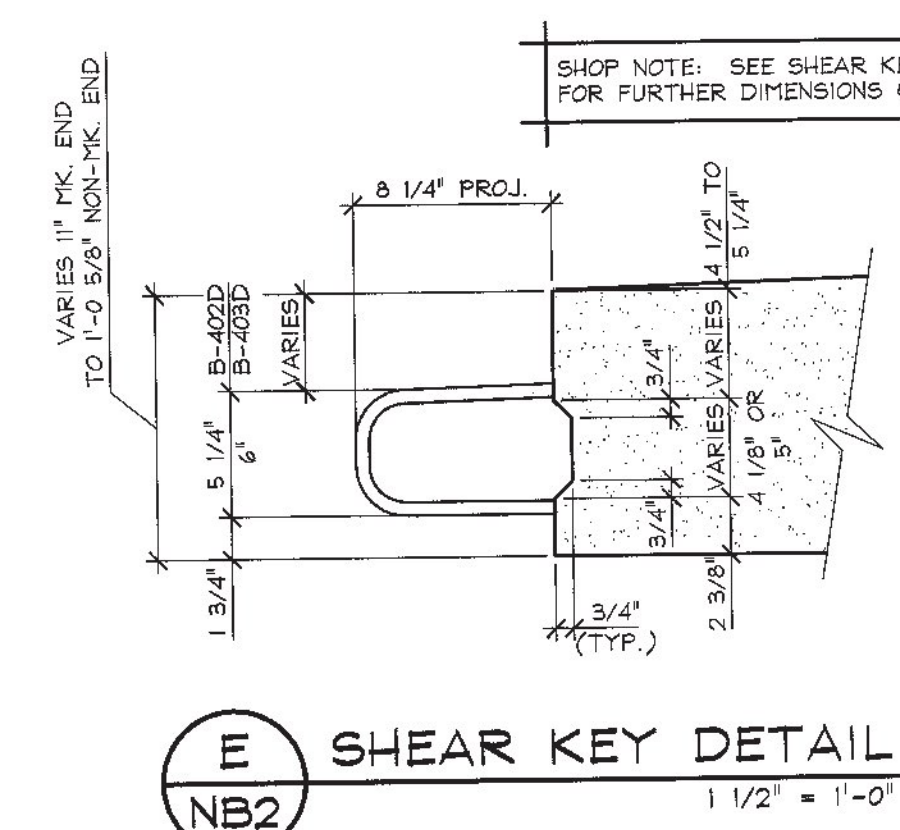
REVIEWED AS REQUIRED BY THE CONSTRUCTION CONTRACT DOCUMENTS AND APPROVED BUT ONLY FOR CONFORMANCE TO THE DESIGN CONCEPT OF THE WORK AND SUBJECT TO FURTHER LIMITATIONS AND REQUIREMENTS CONTAINED IN THE CONSTRUCTION CONTRACT DOCUMENTS.

REJECTED REVISE AND RESUBMIT APPROVED AS NOTED

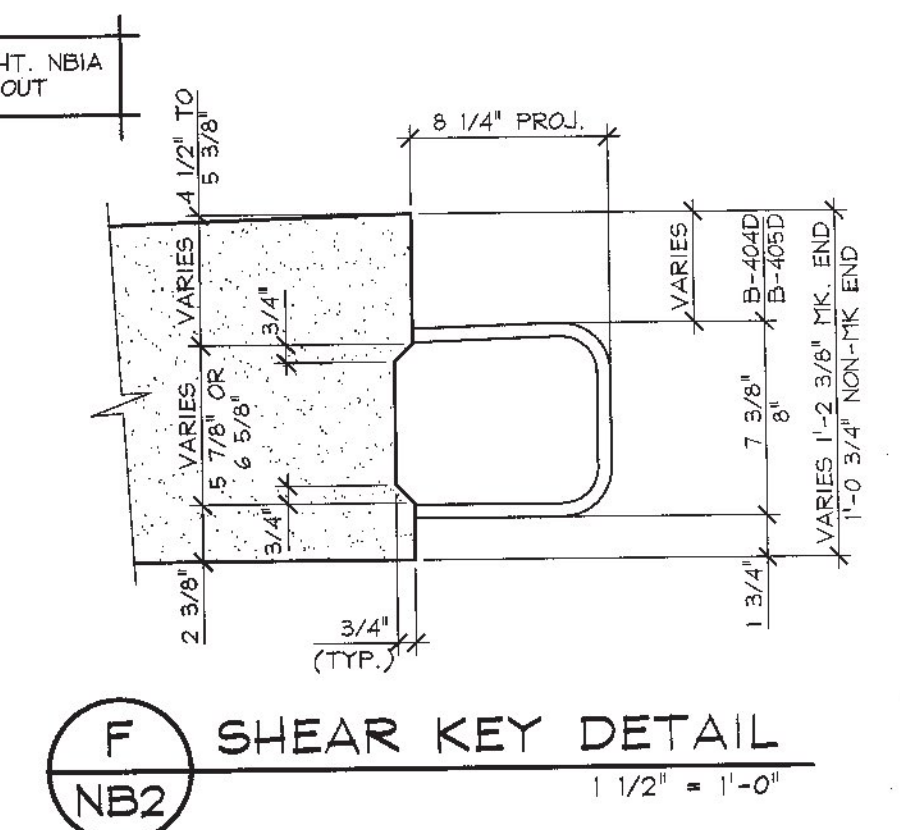
CORRECTIONS OR COMMENTS MADE ON THE SHOP DRAWINGS DURING THIS REVIEW DID NOT RELIEVE CONTRACTOR FROM COMPLIANCE WITH REQUIREMENTS OF THE DRAWINGS AND SPECIFICATIONS. THIS CHECK IS ONLY FOR REVIEW OF GENERAL CONFORMANCE WITH THE DESIGN CONCEPT OF THE PROJECT AND GENERAL COMPLIANCE WITH THE INFORMATION GIVEN IN THE CONTRACT DOCUMENTS. THE CONTRACTOR IS RESPONSIBLE FOR CONFIRMING AND CORRECTING ALL QUANTITIES AND DIMENSIONS. SELECTING FABRICATION PROCESSES AND TECHNIQUES OF CONSTRUCTION, COORDINATING THEIR WORK WITH THAT OF ALL OTHER TRADES AND PERFORMING THEIR WORK IN A SAFE AND SATISFACTORY MANNER.

C.D. Consulting Engineers
 540 Commercial Street
 Manchester, NH 03101
 603-888-8223

Job Number: 120174
 Reviewed by: SRB
 Date: 06/11/2015



E SHEAR KEY DETAIL NB2 1 1/2" = 1'-0"

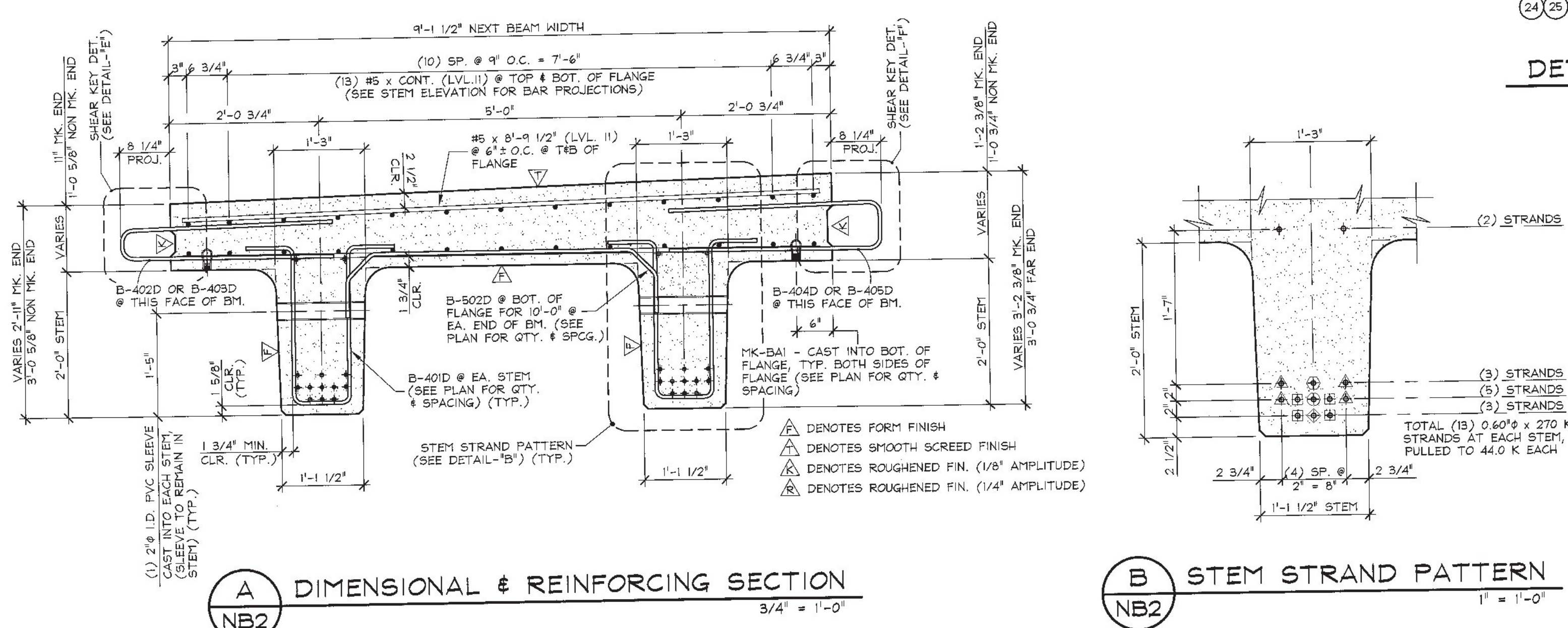


F SHEAR KEY DETAIL NB2 1 1/2" = 1'-0"

DETONSING SCHEDULE
N.T.S.

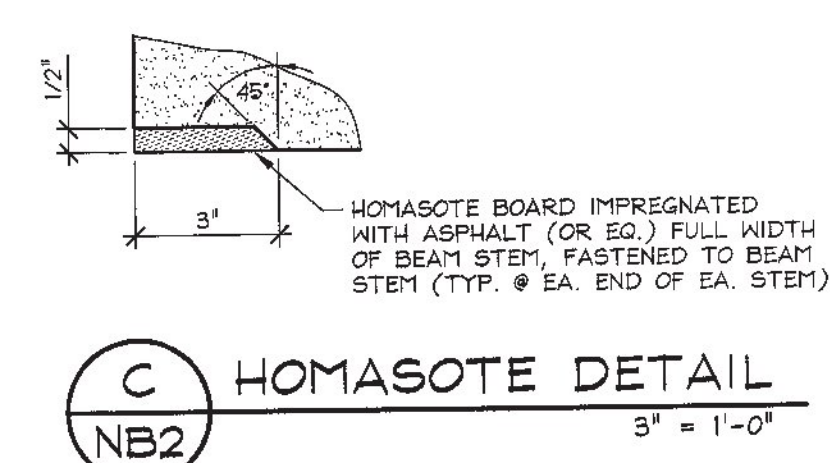
7	5	8
16	15	18
24	25	23

9	6	10
19	12	11
22	26	21



A DIMENSIONAL & REINFORCING SECTION NB2 3/4" = 1'-0"

B STEM STRAND PATTERN NB2 1" = 1'-0"



C HOMASOTE DETAIL NB2 3" = 1'-0"

- PRESTRESSING NOTATIONS**
- ▲ DENOTES STRAIGHT STRANDS TO BE DEBONDED 6" FROM EA. END OF EA. STEM
 - ◆ DENOTES FULLY BONDED STRAIGHT STRANDS EXTENDED 2'-0" FROM EA. END OF EA. STEM
 - DENOTES STRAIGHT STRANDS TO BE DEBONDED 8'-0" FROM EA. END OF EA. STEM
 - ⊙ DENOTES STRAIGHT STRANDS TO BE DEBONDED 4'-0" FROM EA. END OF EA. STEM
 - ⊕ DENOTES FULLY BONDED STRAIGHT STRANDS TO BE CUT FLUSH W/ EA. END OF EA. STEM

6/9/2015 REVISED AS NOTED T.D.
5/28/2015 REVISED AS NOTED T.D.

APPROVAL STAMP:

<p>J.P. CARRARA & SONS INC. Precast & Prestress Manufacturer 2404 GAGE ST., WOODBURY, VERMONT 05753 Phone: (802) 388-6361 Fax: (802) 388-9010</p>	<p>J.P. Sicard CONTRACTOR BARTON, VERMONT</p>	<p>DATE: FEB. 25, 2015 SCALE: NOTED CHKD: - DFTM: T.D. JOB NO: 23462-015</p>
<p>STATE OF VERMONT AGENCY OF TRANSPORTATION COUNTY OF ORLEANS</p>		
<p>TOWN OF BARTON ROARING BROOK ROAD TH #2, RURAL MINOR COLLECTOR BRIDGE NO.: 8 PROJECT NO.: BRO 1449(31)</p>		
<p>PRESTRESSED NEXT BEAM DETAILS</p>		
<p>DWG. NO: NB2</p>		

MARK: B-NB2		QTY.: 1	WT.: 49.36 T	VOL.: 24.38 cy
MATERIAL LIST / NEXT BEAM				
ITEM	MARK	DESCRIPTION	QTY.	
1	MK-BA1	3/4" F42 FERRULE INSERT (GALV.)	22	
2	B-401D	#4 BENT BAR (LEVEL II, DUAL COATED)	122	
3	B-402D	#4 BENT BAR (LEVEL II, DUAL COATED)	45	
4	B-403D	#4 BENT BAR (LEVEL II, DUAL COATED)	44	
5	B-404D	#4 BENT BAR (LEVEL II, DUAL COATED)	45	
6	B-405D	#4 BENT BAR (LEVEL II, DUAL COATED)	45	
7	B-401D	#4 BENT BAR (LEVEL II, DUAL COATED)	16	
8	B-502D	#5 BENT BAR (LEVEL II, DUAL COATED)	42	
9		#4 x 8'-9 1/2" (LEVEL II, DUAL COATED)	20	
10		#5 x 8'-9 1/2" (LEVEL II, DUAL COATED)	180	
11		#5 x 40'-0" (LEVEL II, DUAL COATED)	13	
12		#5 x 14'-9" (LEVEL II, DUAL COATED)	13	
13		#5 x 30'-0" (LEVEL II, DUAL COATED)	13	
14		#5 x 19'-0" (LEVEL II, DUAL COATED)	13	
15		SET OF (4) 0.60" STRAND LIFTING LOOPS	4	