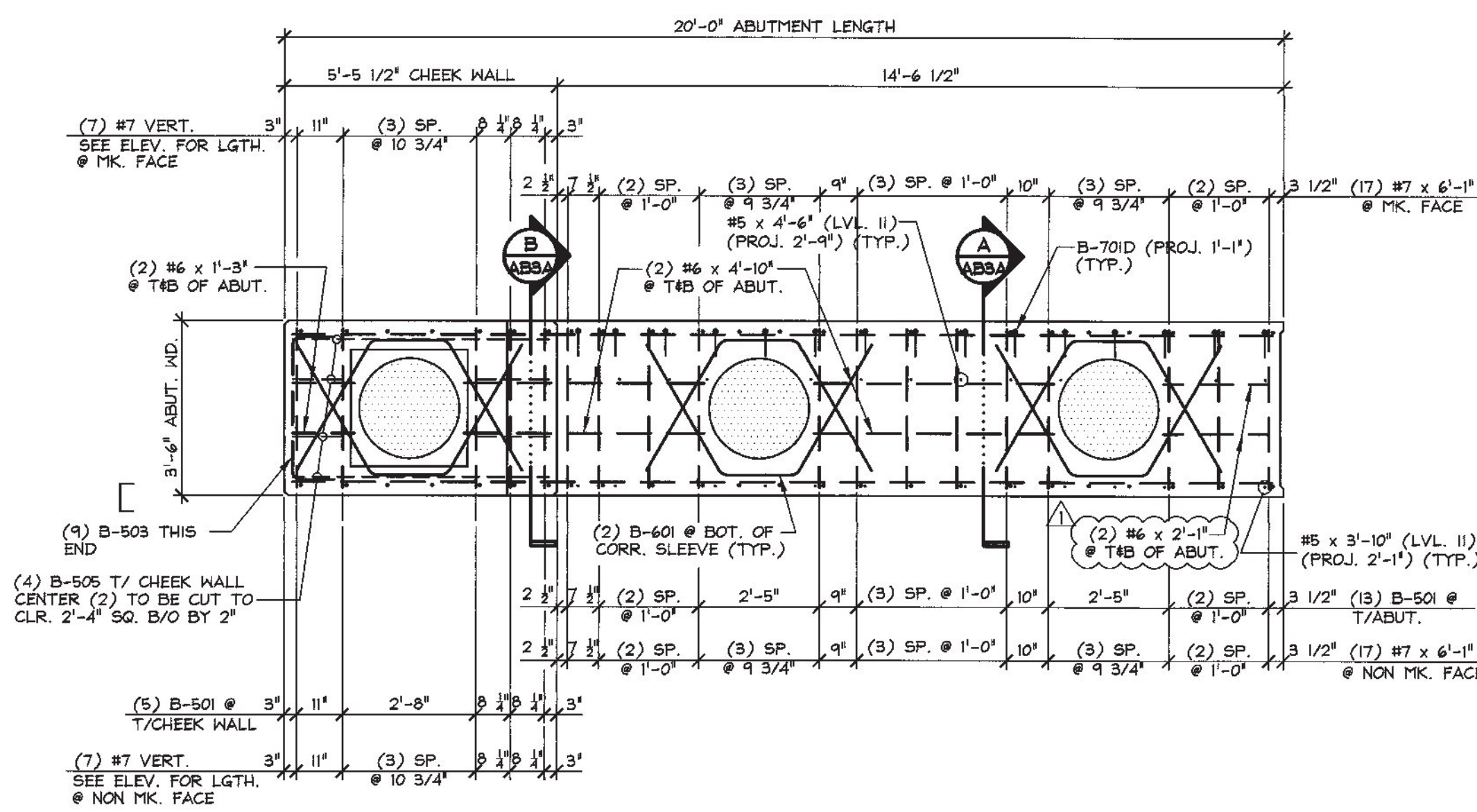
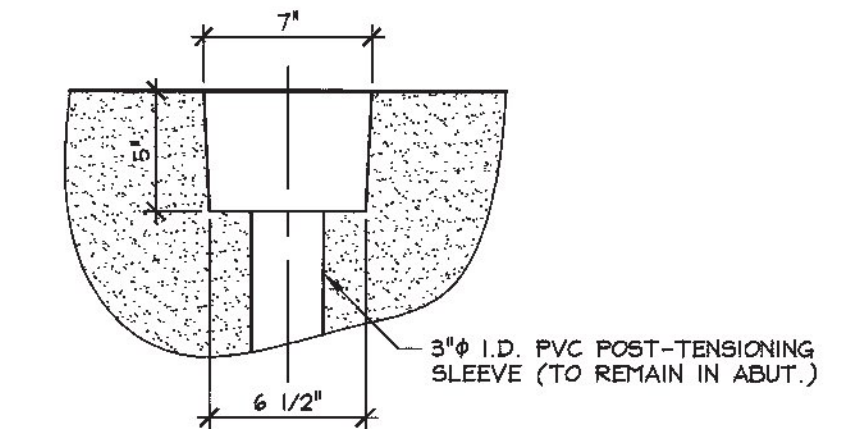


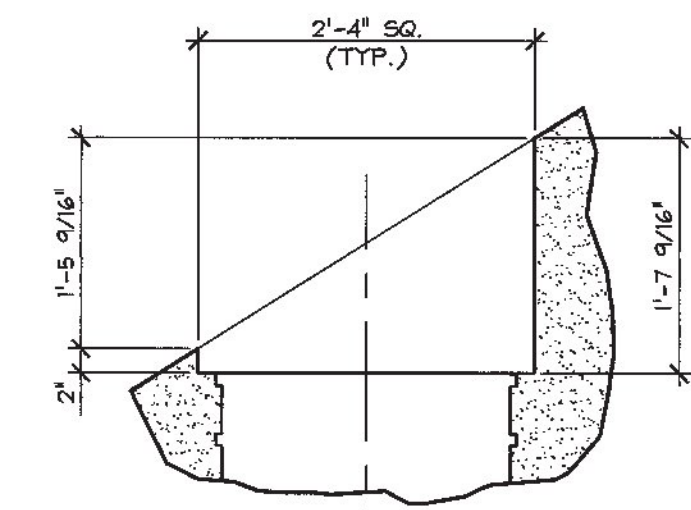
PLAN VIEW IN FORM



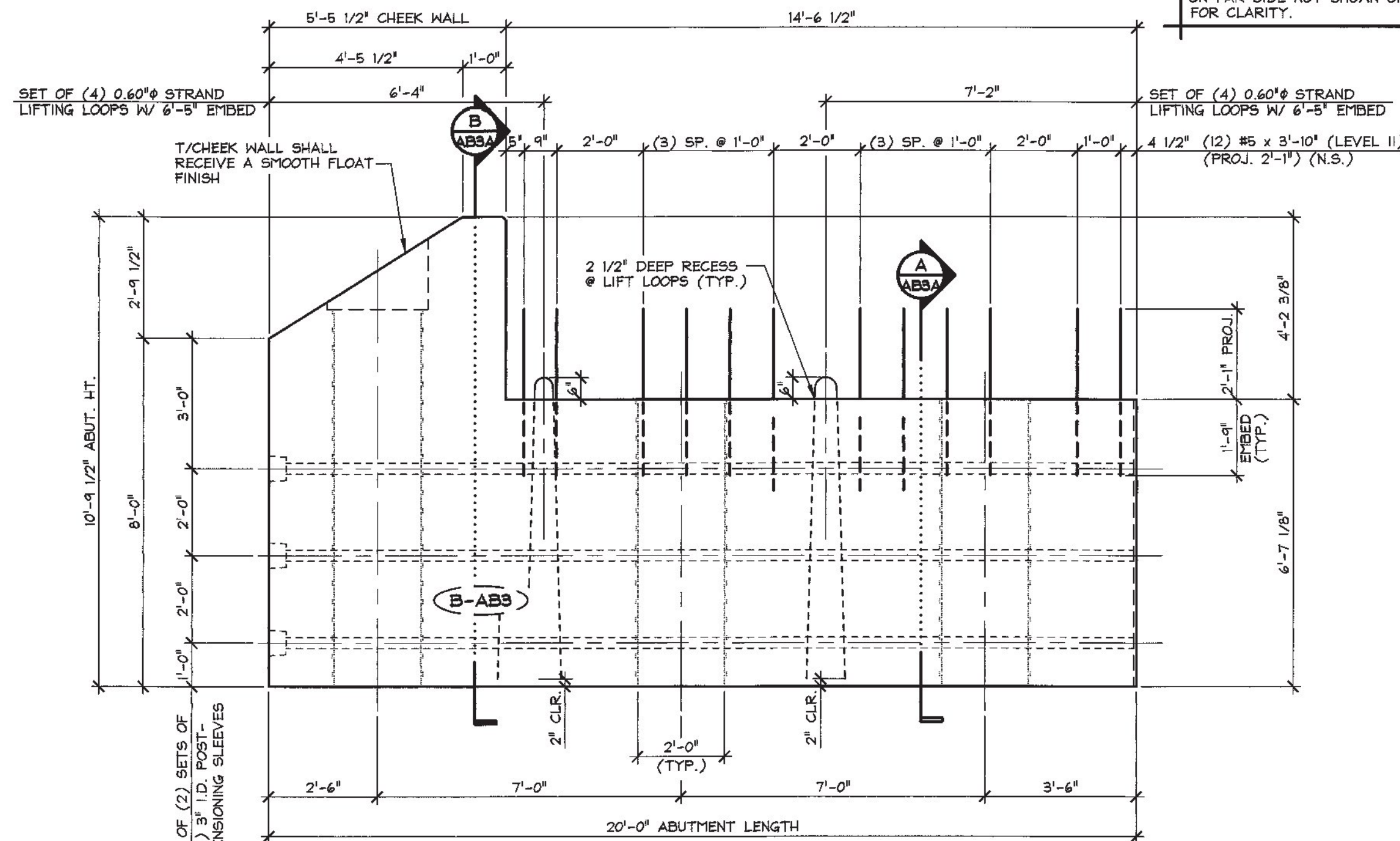
PLAN VIEW IN FORM



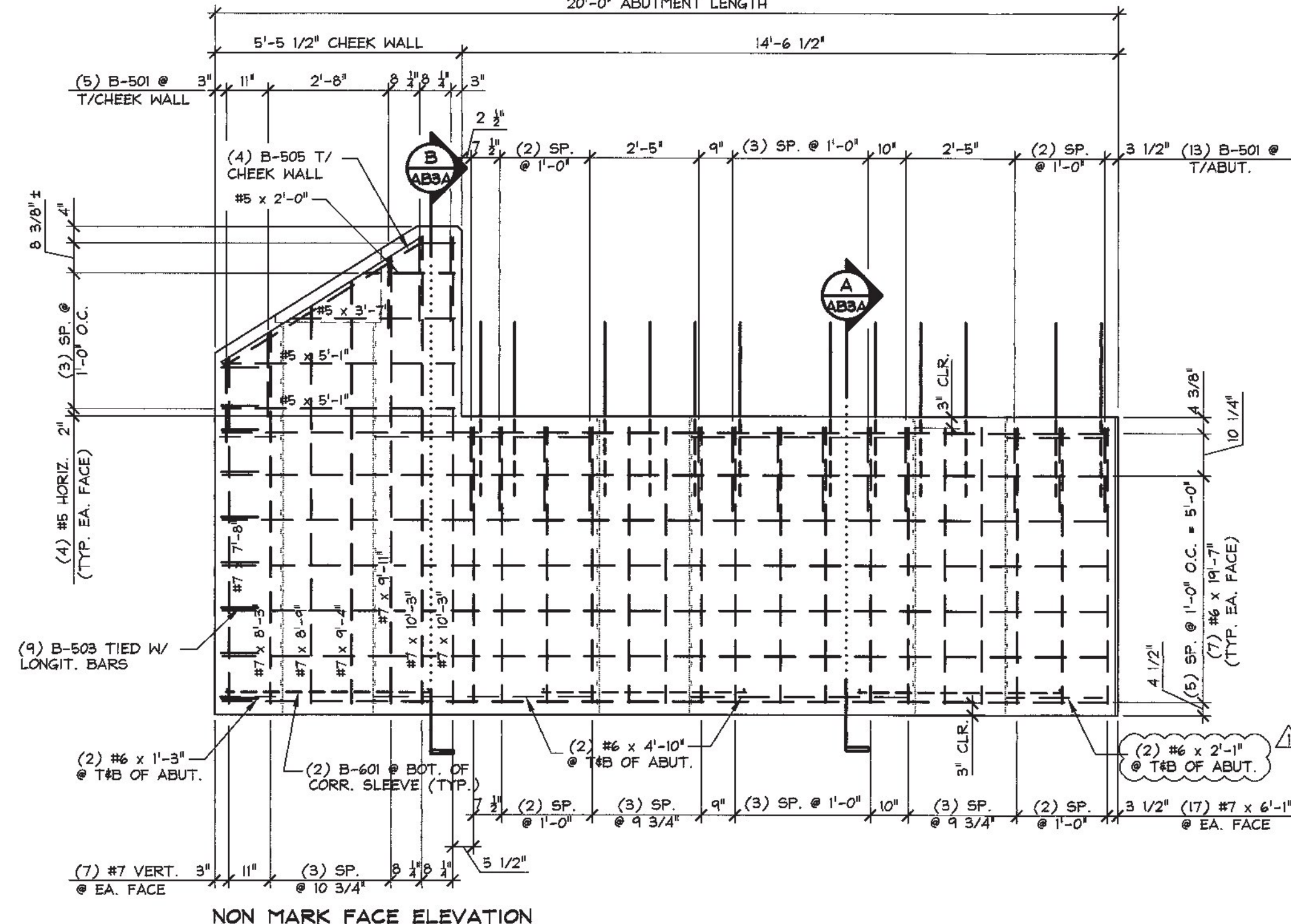
DETAIL - "A"



DETAIL - "D"



NON MARK FACE ELEVATION



NON MARK FACE ELEVATION

SHOP NOTE: B-701D #5 PROJ. 2'-4" ON FAR SIDE NOT SHOWN ON THIS VIEW FOR CLARITY.

SHOP NOTE: ALL EDGES OF ABUTMENT SHALL RECEIVE A 1" CHAMFER (U.N.O.)

MATERIAL LIST / ABUTMENT			
ITEM	MARK	DESCRIPTION	QTY.
1			
2	B-501	#5 BENT BAR (LEVEL I)	18
3	B-505	#5 BENT BAR (LEVEL I)	4
4	B-503	#5 BENT BAR (LEVEL I)	9
5	B-601	#6 BENT BAR (LEVEL I)	6
6	B-701D	#5 BENT BAR (LEVEL II, DUAL COATED)	15
7		#5 x 3'-10" (LEVEL II, DUAL COATED)	12
8		#5 x 4'-6" (LEVEL II, DUAL COATED)	13
9		#5 x 2'-0" (LEVEL I)	2
10		#5 x 3'-7" (LEVEL I)	2
11		#5 x 5'-11" (LEVEL I)	4
12		#6 x 2'-11" (LEVEL I)	4
13		#6 x 1'-3" (LEVEL I)	4
14		#6 x 4'-10" (LEVEL I)	8
15		#6 x 10'-7" (LEVEL I)	14
16		#7 x 6'-11" (LEVEL I)	34
17		#7 x 7'-8" (LEVEL I)	2
18		#7 x 8'-3" (LEVEL I)	2
19		#7 x 9'-11" (LEVEL I)	2
20		#7 x 10'-3" (LEVEL I)	4
21		#7 x 8'-9" (LEVEL I)	2
22		#7 x 9'-4" (LEVEL I)	2
23		SET OF (4) 0.60" STRAND LIFTING LOOPS	2
24		2'-0" x 6'-7 1/8" CORRUGATED STEEL PIPE (GALV.)	2
25		2'-0" x 8'-8" CORRUGATED STEEL PIPE (GALV.)	1

1 ABUTMENT DIMENSIONAL DETAILS
AB3 3/8" = 1'-0"

2 ABUTMENT REINFORCING DETAILS
AB3 3/8" = 1'-0"

SHOP NOTE:
28 DAYS = 5,000 PSI
RELEASE = 5,000 PSI

MIX DESIGN:
MIX NO. 425M-NO DCI
APPROVED 3-21-2015

SHOP DRAWING REVIEW

REVIEWED AS REQUIRED BY THE CONSTRUCTION CONTRACT DOCUMENTS AND APPROVED, BUT ONLY FOR CONFORMANCE TO THE DESIGN CONCEPT OF THE WORK, AND SUBJECT TO FURTHER LIMITATIONS AND REQUIREMENTS CONTAINED IN THE CONSTRUCTION CONTRACT DOCUMENTS.

REJECTED REVISE AND RESUBMIT APPROVED AS NOTED

CORRECTIONS OR COMMENTS MADE ON THE SHOP DRAWINGS DURING THIS REVIEW DID NOT RELIEVE CONTRACTOR FROM COMPLIANCE WITH REQUIREMENTS OF THE DRAWINGS AND SPECIFICATIONS. THIS CHECK IS ONLY FOR REVIEW OF GENERAL CONFORMANCE WITH THE DESIGN CONCEPT OF THE PROJECT AND GENERAL COMPLIANCE WITH THE INFORMATION GIVEN IN THE CONTRACT DOCUMENTS. THE CONTRACTOR IS RESPONSIBLE FOR CONFIRMING AND CORRECTING ALL QUANTITIES AND DIMENSIONS, SELECTING FABRICATION PROCESSES AND TECHNIQUES OF CONSTRUCTION, COORDINATING THEIR WORK WITH THAT OF ALL OTHER TRADES, AND PERFORMING THEIR WORK IN A SAFE AND SATISFACTORY MANNER.

CLD Consulting Engineers
245 Commercial Street
Manchester, NH 03101
603-689-8222

Job Number: 1201174
Reviewed by: SRB
Date: 06/11/2015

5/28/2015 REVISED AS NOTED T.D.

APPROVAL STAMP:

J.P. CARRARA & SONS INC.
Precast & Prestress Manufacturer
2444 ONE ST., MIDDLEBURY, VERMONT 05753 Phone: (802)388-6361 Fax: (802)388-8010

STATE OF VERMONT AGENCY OF TRANSPORTATION
COUNTY OF ORLEANS

TOWN OF BARTON
ROARING BROOK ROAD TH #2, RURAL MINOR COLLECTOR
BRIDGE NO.: 8 PROJECT NO.: BRO 1449(31)

DATE: FEB. 25, 2015
SCALE: NOTED
CHKD: DFTM: T.D.
JOB NO: 23462-015
DWG. NO: AB3