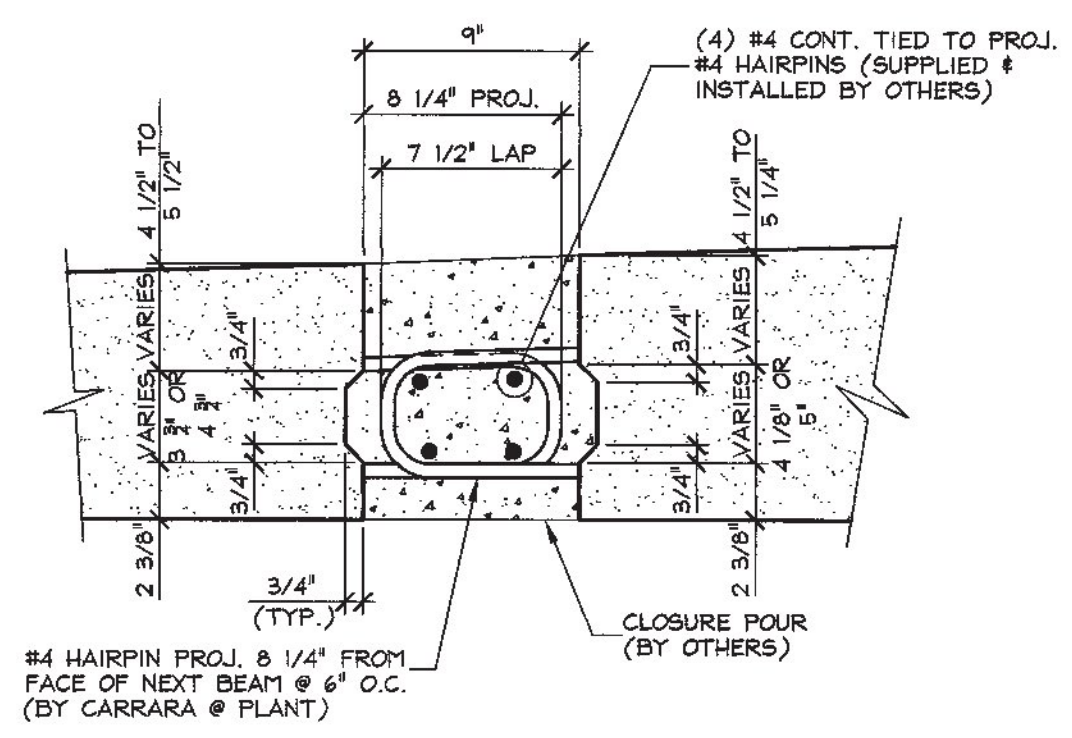
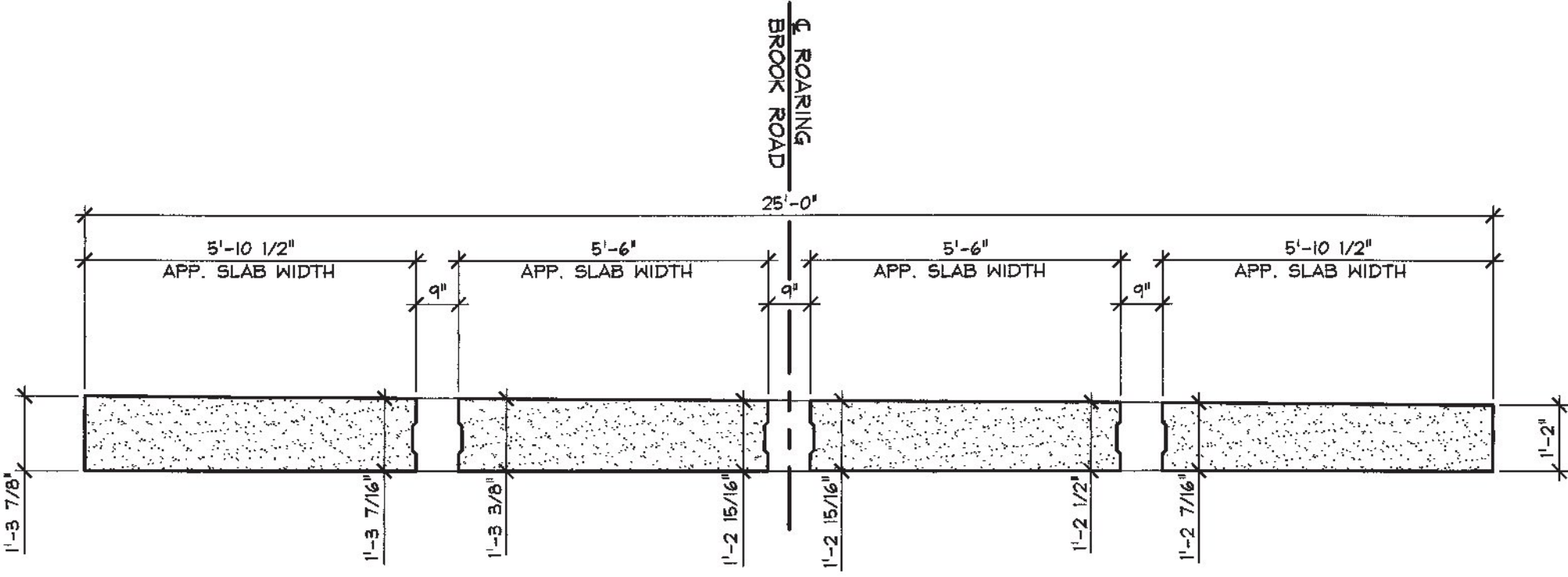


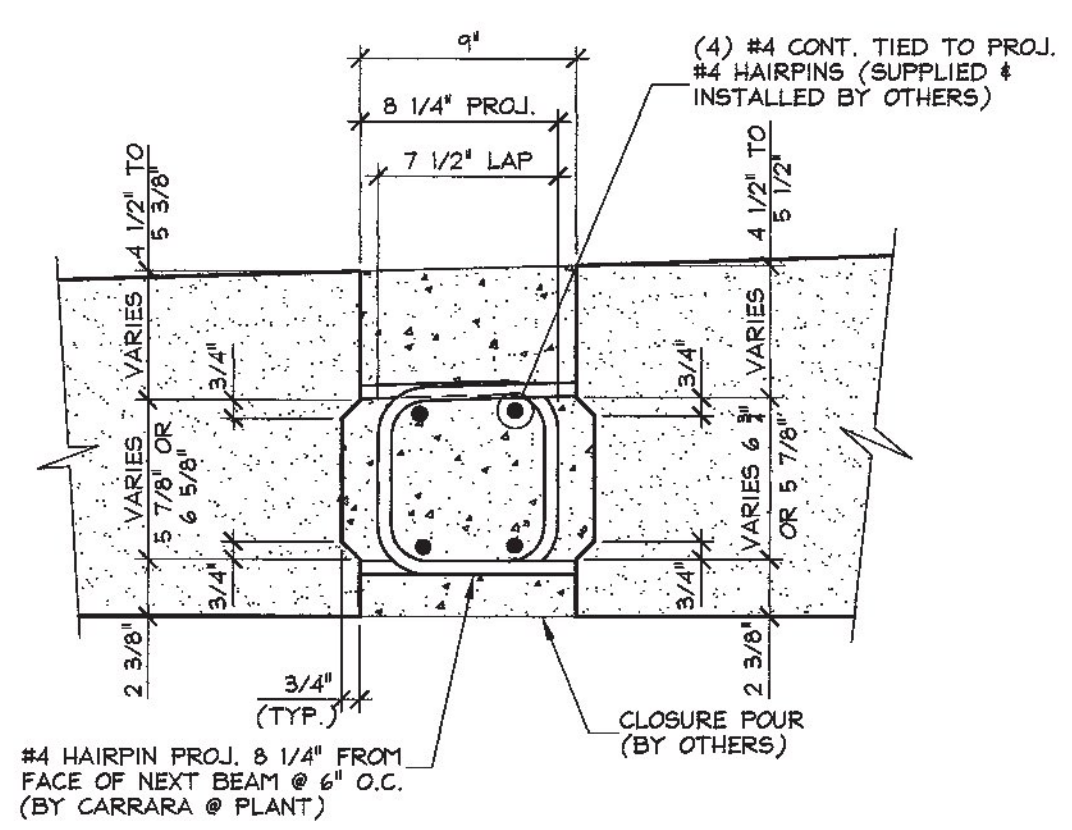
4 TRANSVERSE SECTION THRU NEXT BEAMS
F4 1/2" = 1'-0"



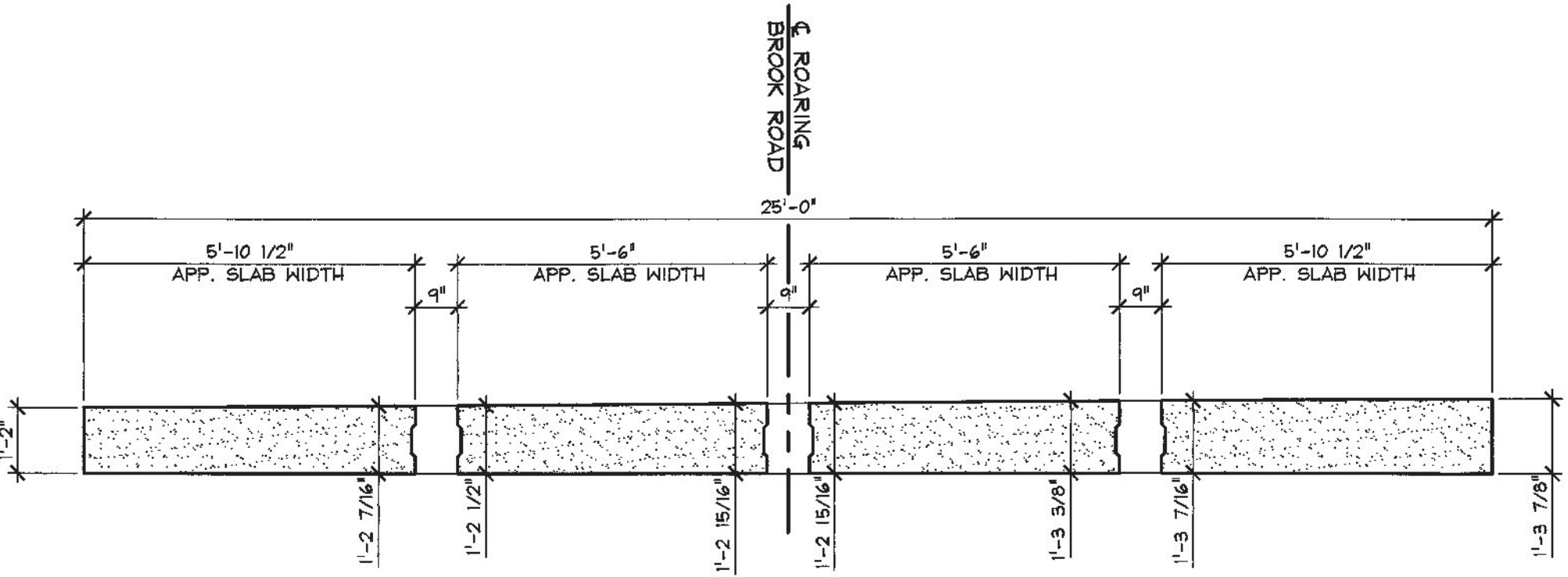
7 SHEAR KEY DETAIL
F4 1 1/2" = 1'-0"



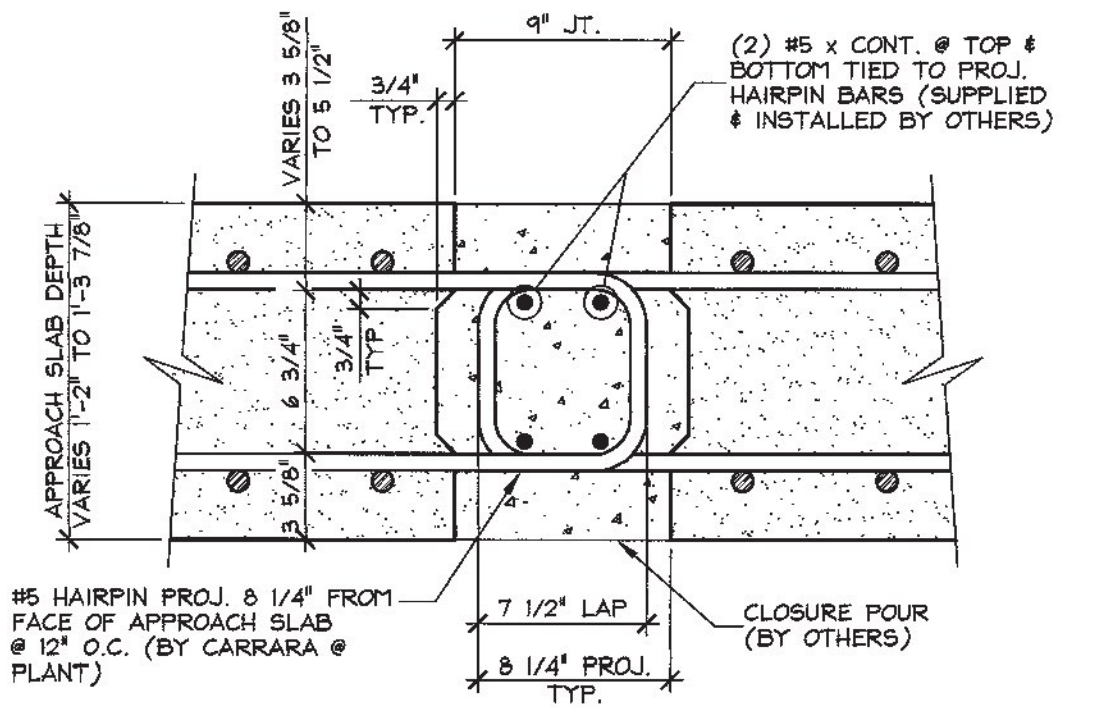
5 SECTION AT APPROACH SLABS
F4 (ABUT. #1 & ABUT. #2) 3/8" = 1'-0"



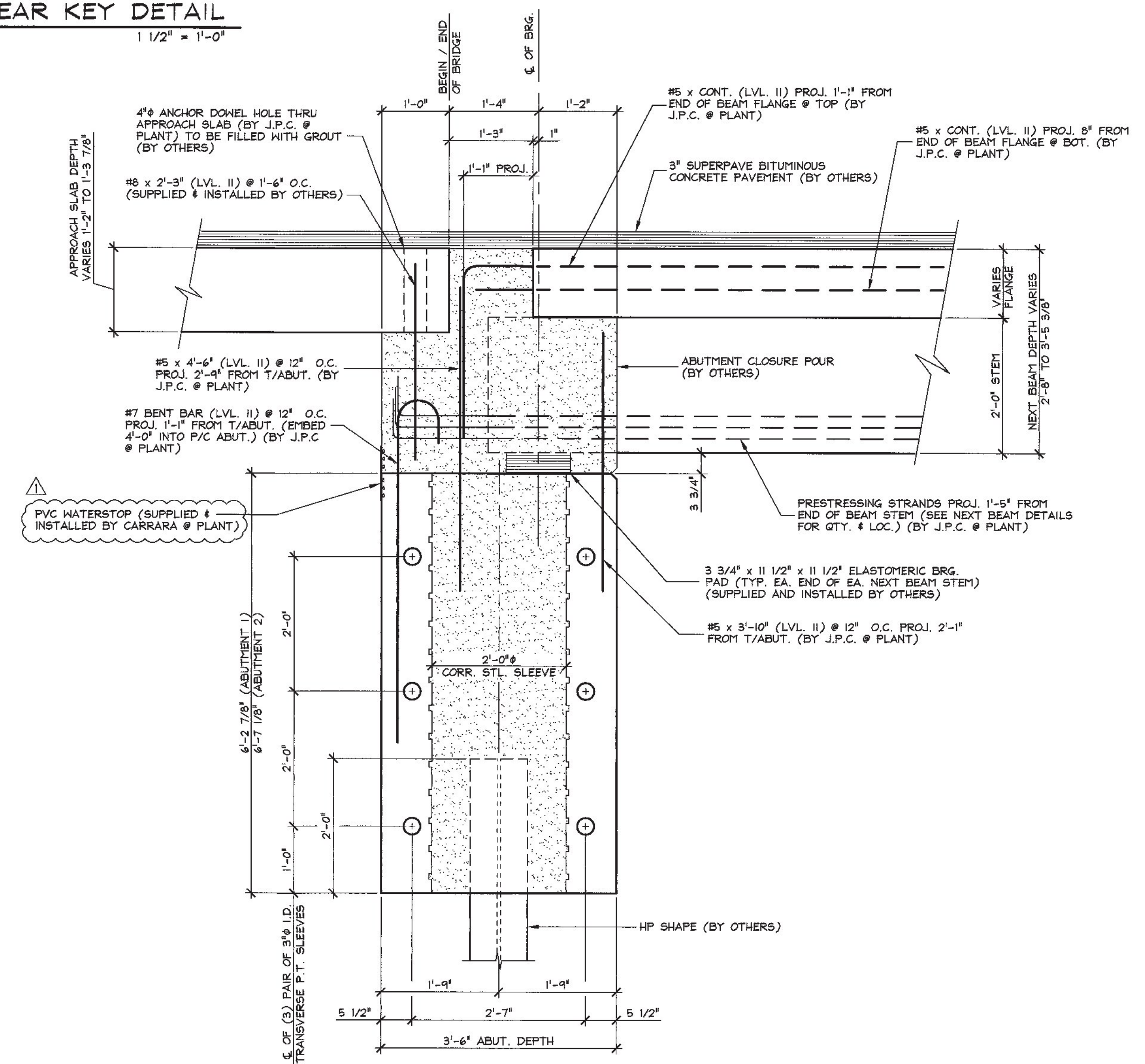
8 SHEAR KEY DETAIL
F4 1 1/2" = 1'-0"



6 SECTION AT APPROACH SLABS
F4 (ABUT. #1 & ABUT. #2) 3/8" = 1'-0"



10 APPROACH SLAB CLOSURE POUR
F4 1 1/2" = 1'-0"



9 ABUTMENT SECTION
F4 3/4" = 1'-0"

SHOP DRAWING REVIEW

REVIEWED AS REQUIRED BY THE CONSTRUCTION CONTRACT DOCUMENTS AND APPROVED, BUT ONLY FOR CONFORMANCE TO THE DESIGN CONCEPT OF THE WORK, AND SUBJECT TO FURTHER LIMITATIONS AND REQUIREMENTS CONTAINED IN THE CONSTRUCTION CONTRACT DOCUMENTS.

REJECTED REVISE AND RESUBMIT APPROVED AS NOTED

CORRECTIONS OR COMMENTS MADE ON THE SHOP DRAWINGS DURING THIS REVIEW DO NOT RELIEVE CONTRACTOR FROM COMPLIANCE WITH REQUIREMENTS OF THE DRAWINGS AND SPECIFICATIONS. THIS CHECK IS ONLY FOR REVIEW OF GENERAL CONFORMANCE WITH THE DESIGN CONCEPT OF THE PROJECT AND GENERAL COMPLIANCE WITH THE INFORMATION GIVEN IN THE CONTRACT DOCUMENTS. THE CONTRACTOR IS RESPONSIBLE FOR CONFIRMING AND CORRELATING ALL QUANTITIES AND DIMENSIONS, SELECTING FABRICATION PROCESSES AND TECHNIQUES OF CONSTRUCTION, COORDINATING THEIR WORK WITH THAT OF ALL OTHER TRADES, AND PERFORMING THEIR WORK IN A SAFE AND SATISFACTORY MANNER.

C.D. Consulting Engineers
540 Commercial Street
Manchester, NH 03101
803-868-3223

Job Number: 120174
Reviewed by: SRB
Date: 06/11/2015

5/28/2015 REVISED AS NOTED T.D.

APPROVAL STAMP:	J.P. CARRARA & SONS INC. Precast & Prestress Manufacturer 2464 OISE ST., MIDDLEBURY, VERMONT 05753 Phone: (802)388-6361 Fax: (802)388-8010	J.P. Sicard CONTRACTOR BARTON, VERMONT
STATE OF VERMONT AGENCY OF TRANSPORTATION COUNTY OF ORLEANS		DATE: FEB. 25, 2015
TOWN OF BARTON ROARING BROOK ROAD TH #2, RURAL MINOR COLLECTOR BRIDGE NO.: 8 PROJECT NO.: BRO 1449(31)		SCALE: NOTED
SECTIONS AND DETAILS		CHKD: DFTM: T.D. JOB NO: 23462-015
		DWG. NO: F4