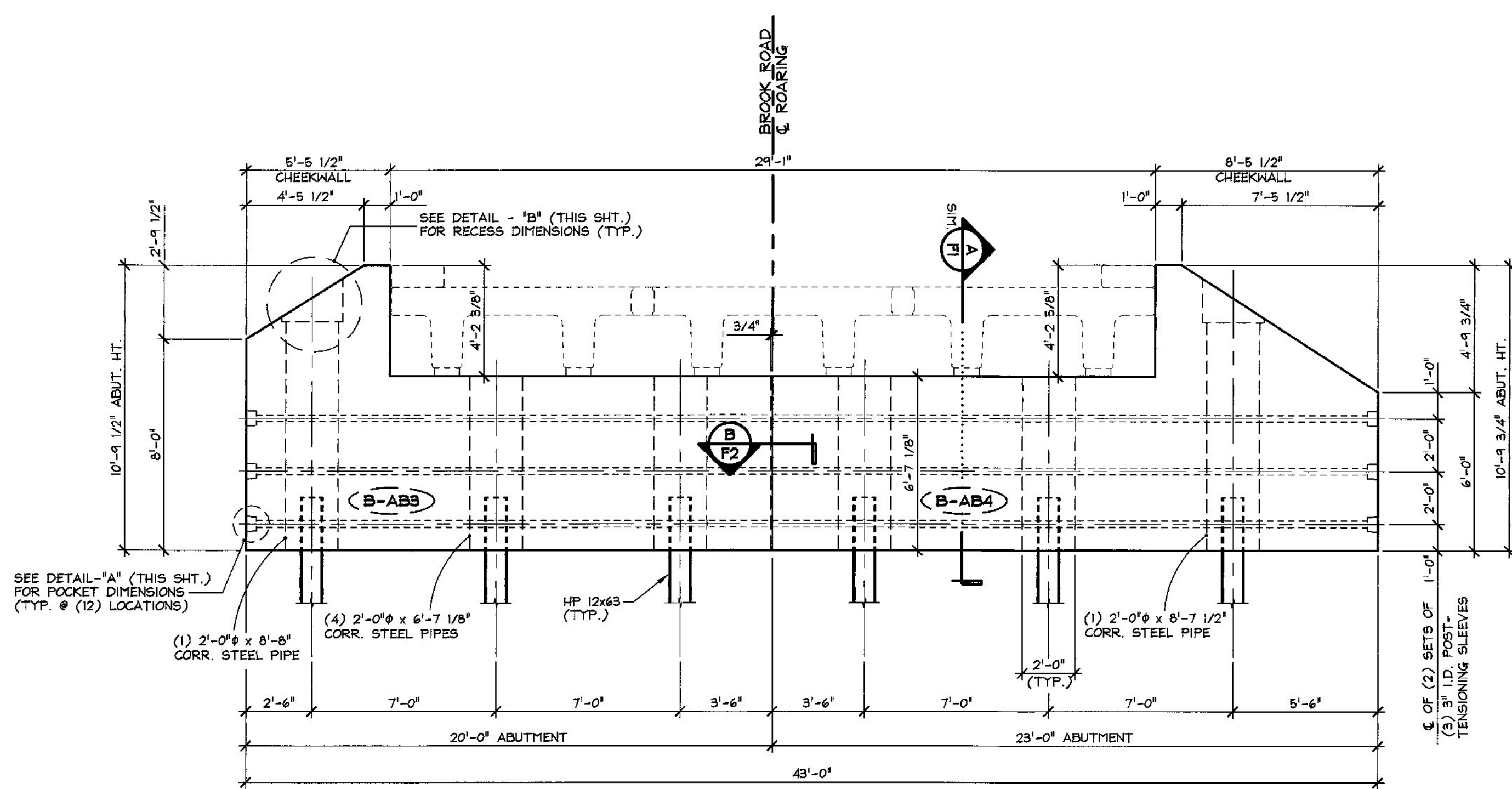
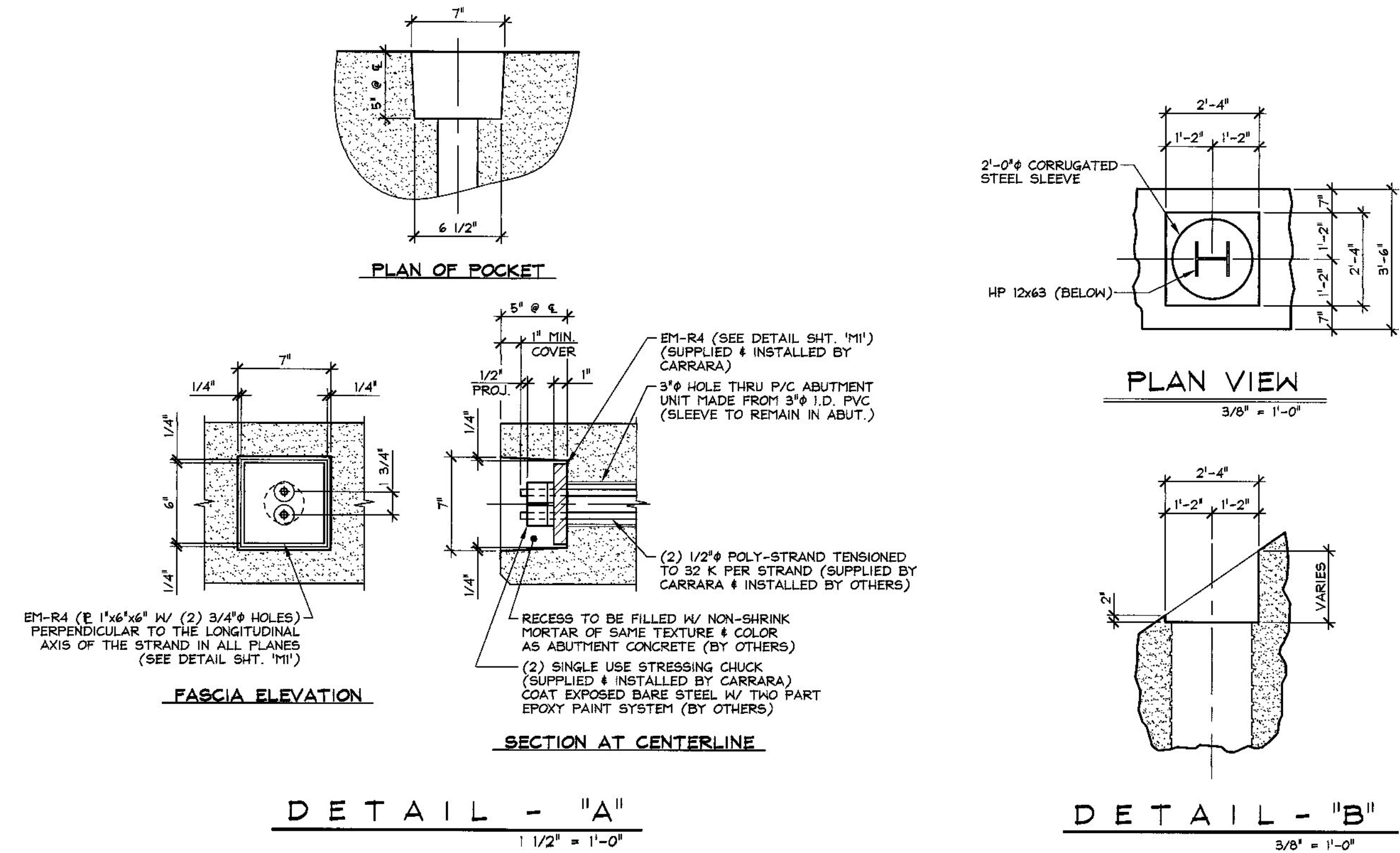
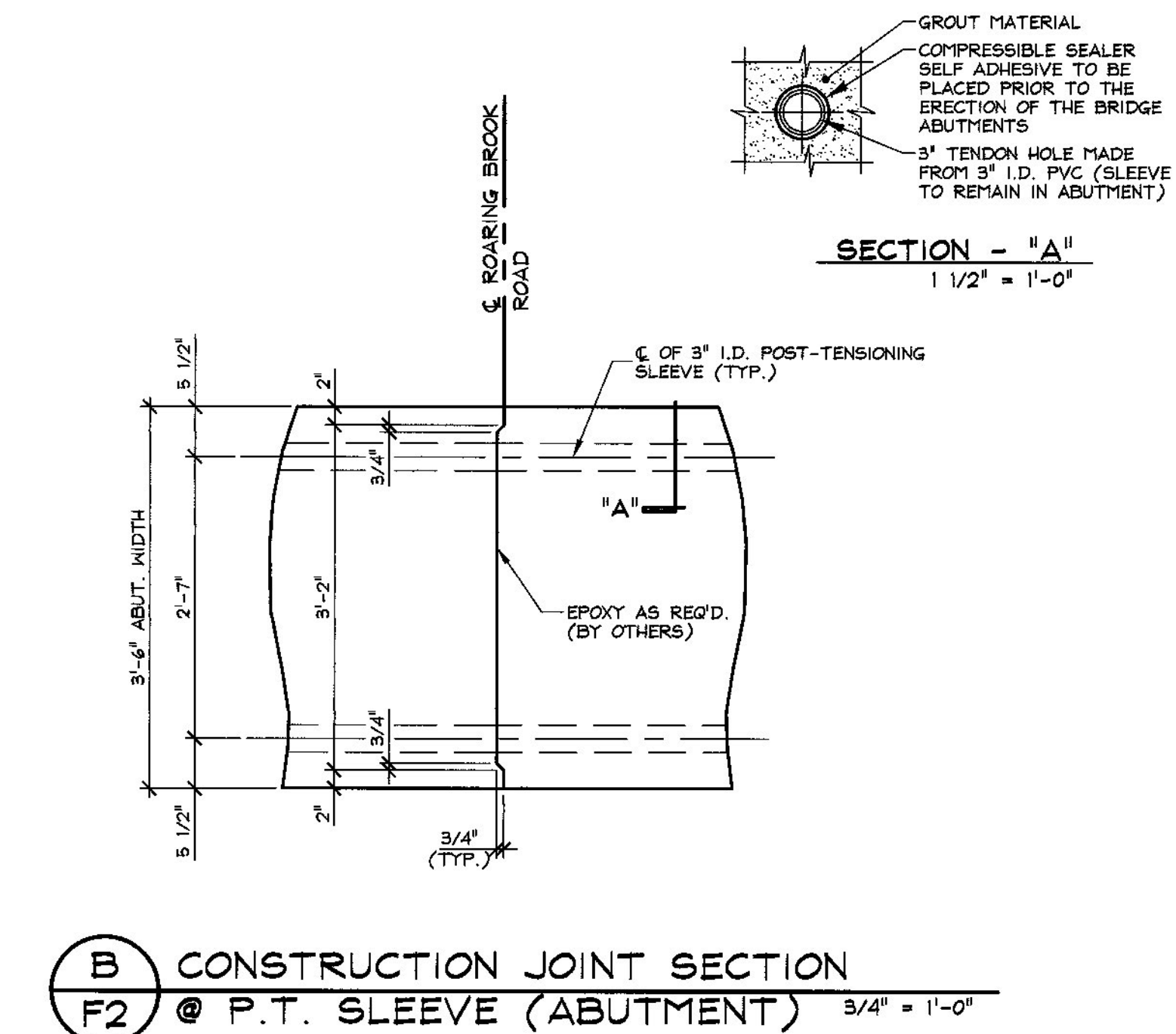


2 PRECAST ABUTMENT #1 ELEVATION
 F2
 1/4" = 1'-0"



3 PRECAST ABUTMENT #2 ELEVATION
 F2
 1/4" = 1'-0"



B CONSTRUCTION JOINT SECTION
 F2 @ P.T. SLEEVE (ABUTMENT)
 3/4" = 1'-0"

SHOP DRAWING REVIEW

REVIEWED AS REQUIRED BY THE CONSTRUCTION CONTRACT DOCUMENTS AND APPROVED, BUT ONLY FOR CONFORMANCE TO THE DESIGN CONCEPT OF THE WORK, AND SUBJECT TO FURTHER LIMITATIONS AND REQUIREMENTS CONTAINED IN THE CONSTRUCTION CONTRACT DOCUMENTS.

REJECTED REVISE AND RESUBMIT APPROVED AS NOTED

CORRECTIONS OR COMMENTS MADE ON THE SHOP DRAWINGS DURING THIS REVIEW DO NOT RELIEVE CONTRACTOR FROM COMPLIANCE WITH REQUIREMENTS OF THE DRAWINGS AND SPECIFICATIONS. THIS CHECK IS ONLY FOR REVIEW OF GENERAL CONFORMANCE WITH THE DESIGN CONCEPT OF THE PROJECT AND GENERAL COMPLIANCE WITH THE INFORMATION GIVEN IN THE CONTRACT DOCUMENTS. THE CONTRACTOR IS RESPONSIBLE FOR CONFIRMING AND CORRELATING ALL QUANTITIES AND DIMENSIONS; SELECTING FABRICATION PROCESSES AND TECHNIQUES OF CONSTRUCTION COORDINATING THEIR WORK WITH THAT OF ALL OTHER TRADES; AND PERFORMING THEIR WORK IN A SAFE AND SATISFACTORY MANNER.

CLD Consulting Engineers
 140 Commercial Street
 Montpelier, VT 05602
 802-223-8222

Job Number: 120174
 Reviewed by: SRB
 Date: 06/11/2015

APPROVAL STAMP:	J.P. CARRARA & SONS INC. Precast & Prestress Manufacturer <small>244 GSE ST. MIDDLEBURY, VERMONT 05753 Phone: (802)388-6361 Fax: (802)388-9010</small>		J.P. Sicard CONTRACTOR BARTON, VERMONT
	STATE OF VERMONT AGENCY OF TRANSPORTATION COUNTY OF ORLEANS		DATE: FEB. 25, 2015 SCALE: NOTED
	TOWN OF BARTON ROARING BROOK ROAD TH #2, RURAL MINOR COLLECTOR BRIDGE NO.: 8 PROJECT NO.: BRO 1449(31)		CHKD: DFTM: T.D. JOB NO: 23462-015
	PRECAST ABUTMENT ELEVATIONS & DETAILS		DWG. NO: F2