

APPROACH RAIL ELEVATION
LEADING END (RIGHT) IS SHOWN (TYP AT SW QUADRANT)
DEPARTURE END (LEFT) SIMILAR BUT OPPOSITE HAND (TYP AT SE & NW QUADRANT)
SEE SHEET 4 FOR SPECIAL CURVED APPROACH AT NE QUADRANT

SHOP DRAWING REVIEW

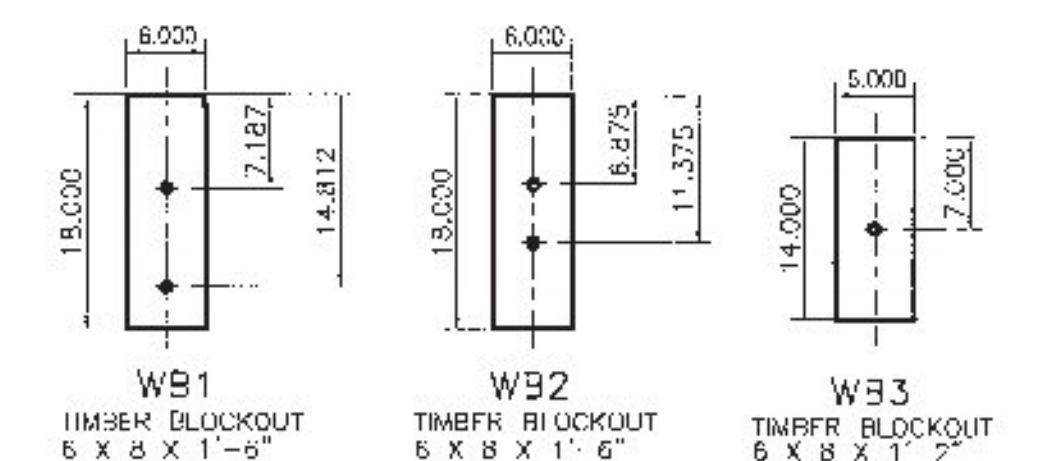
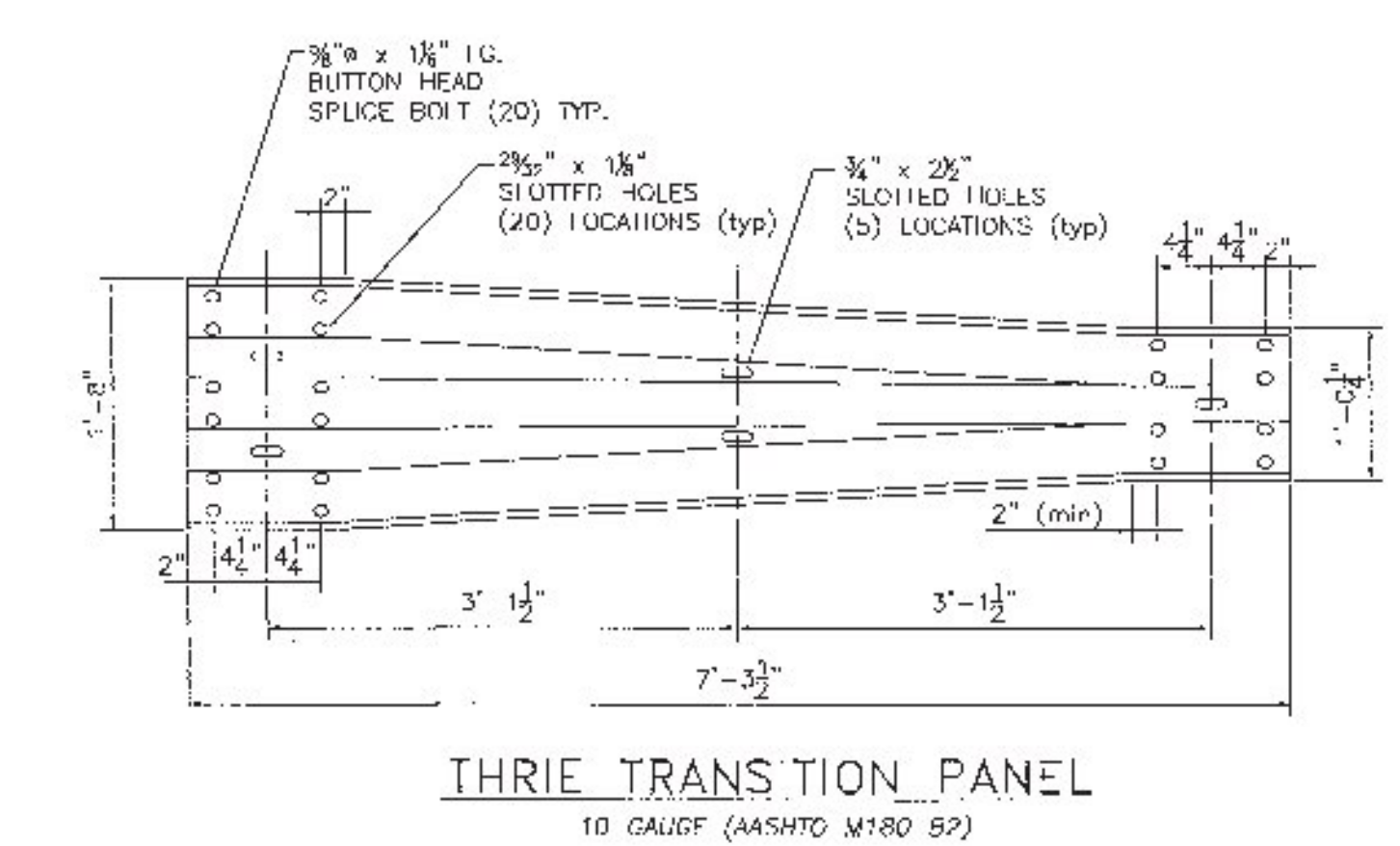
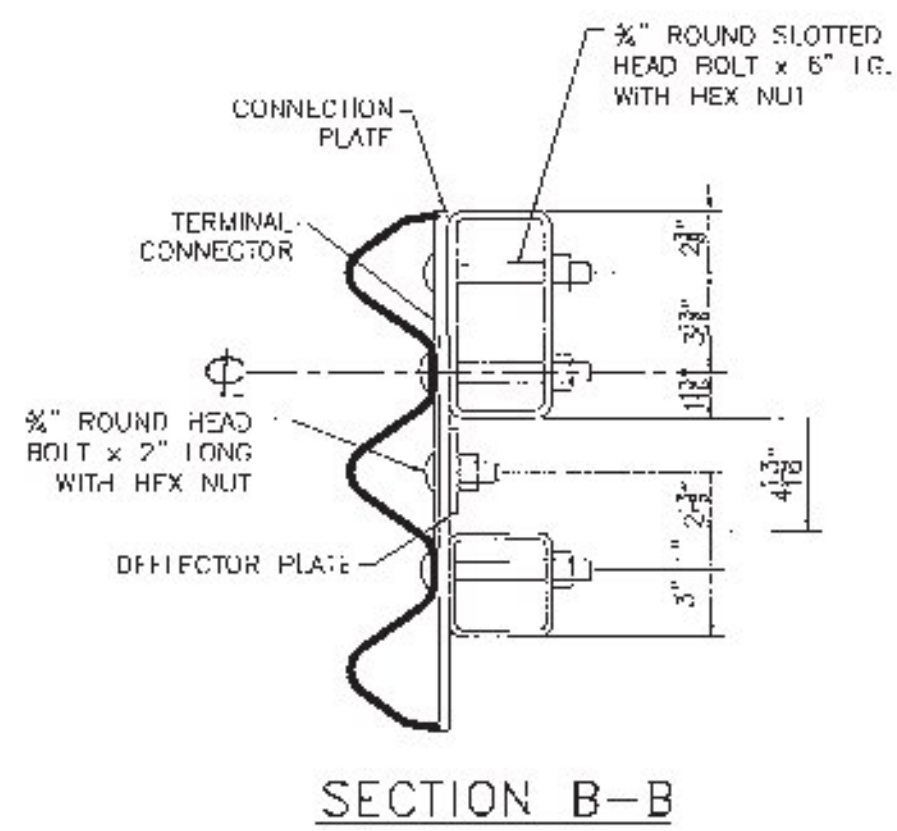
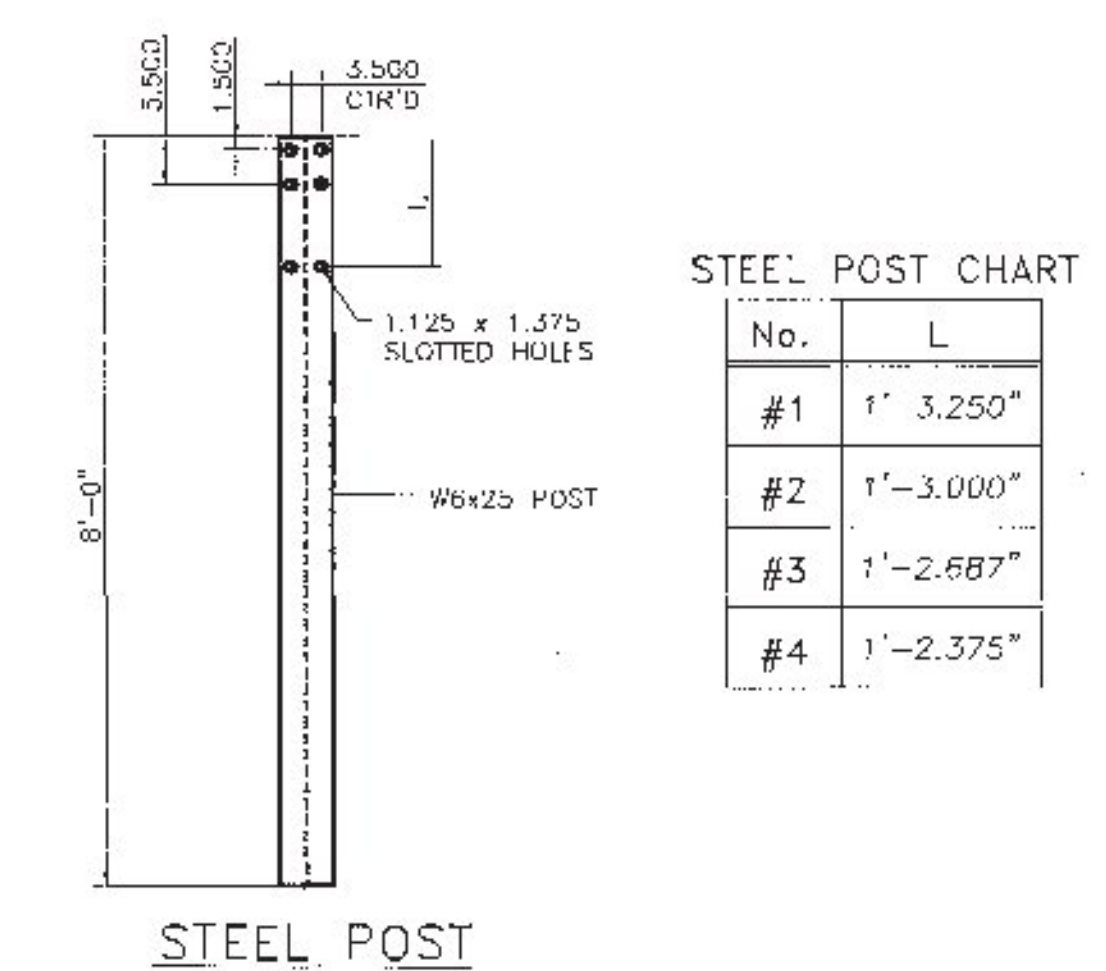
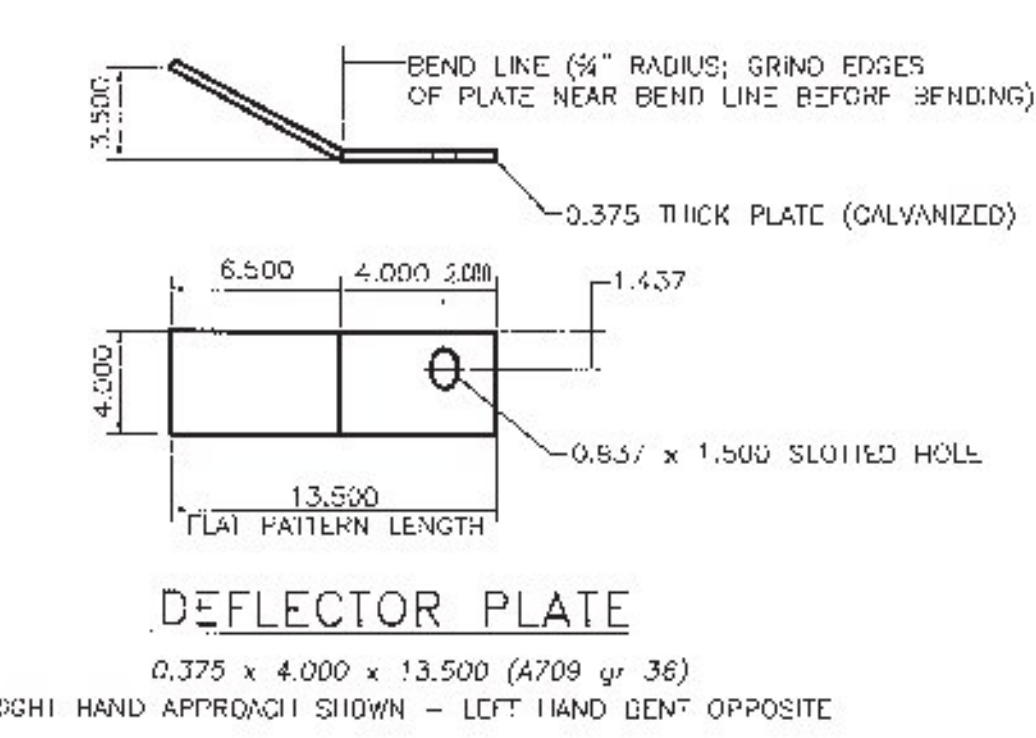
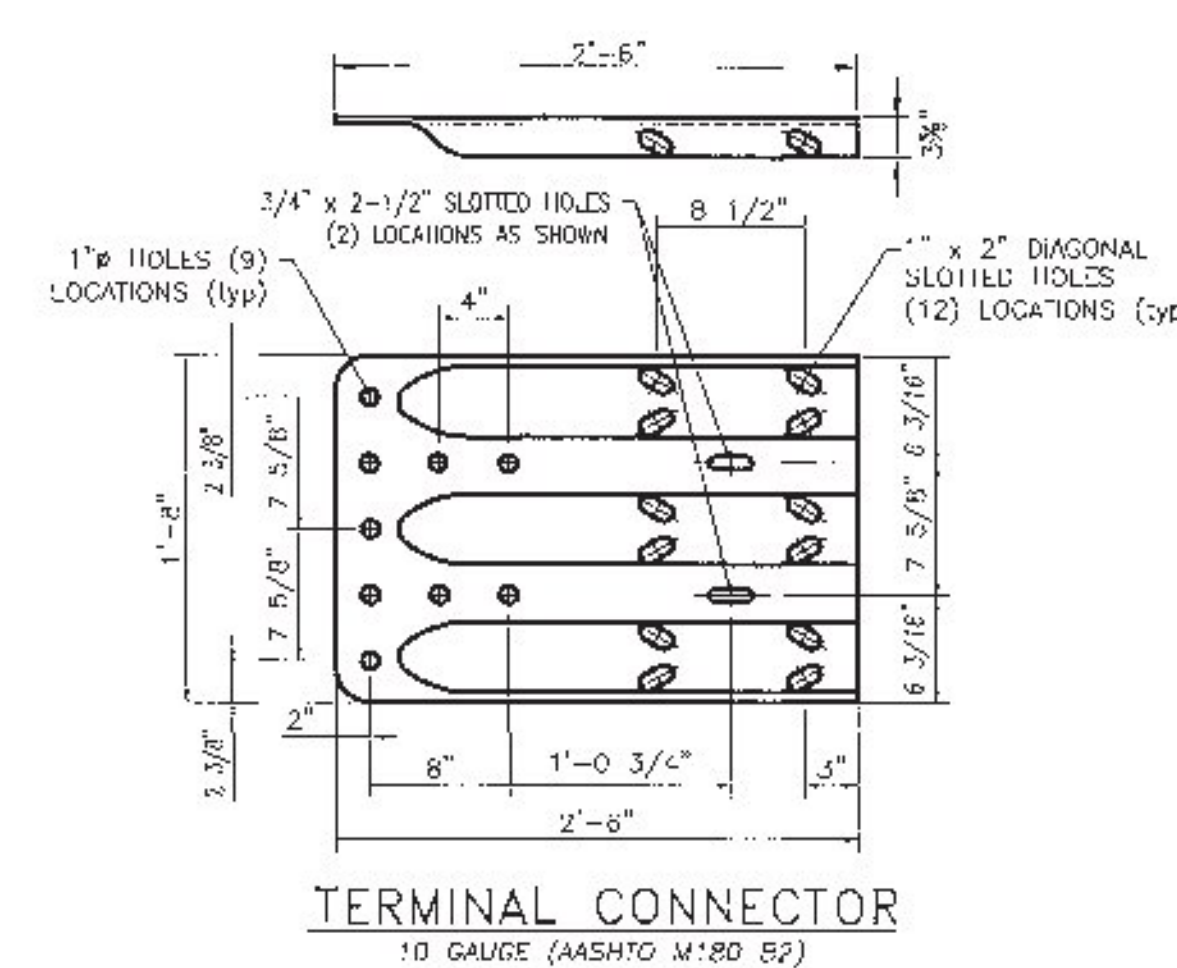
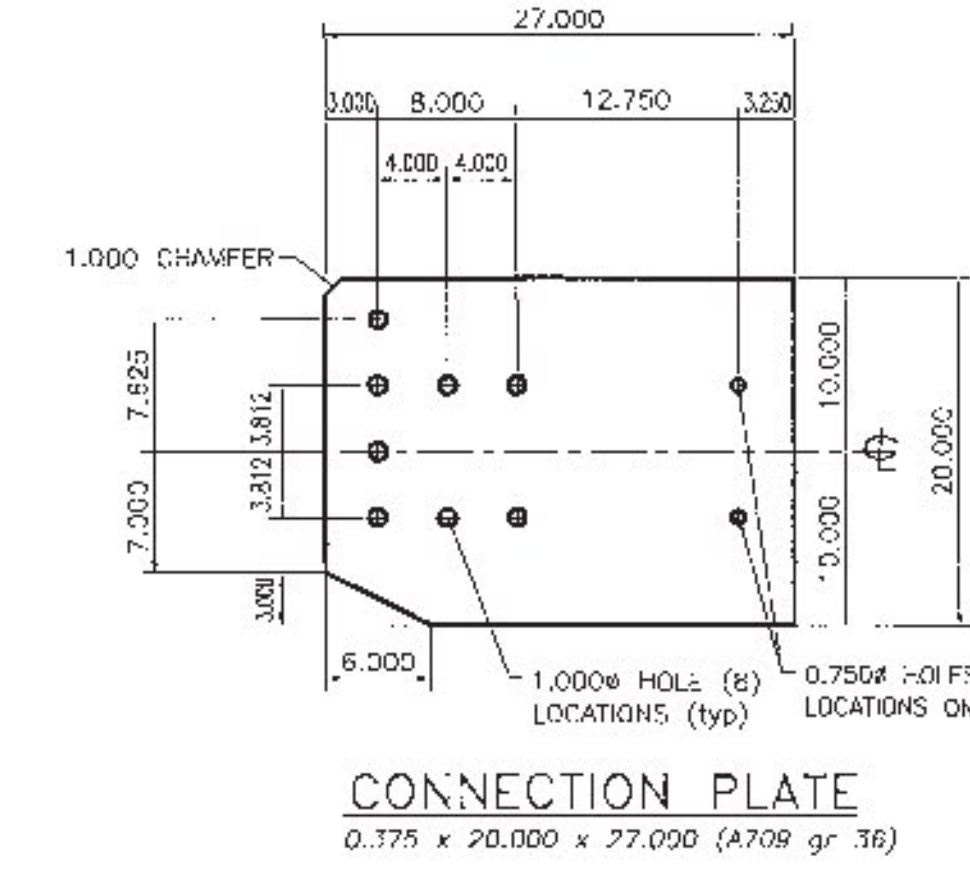
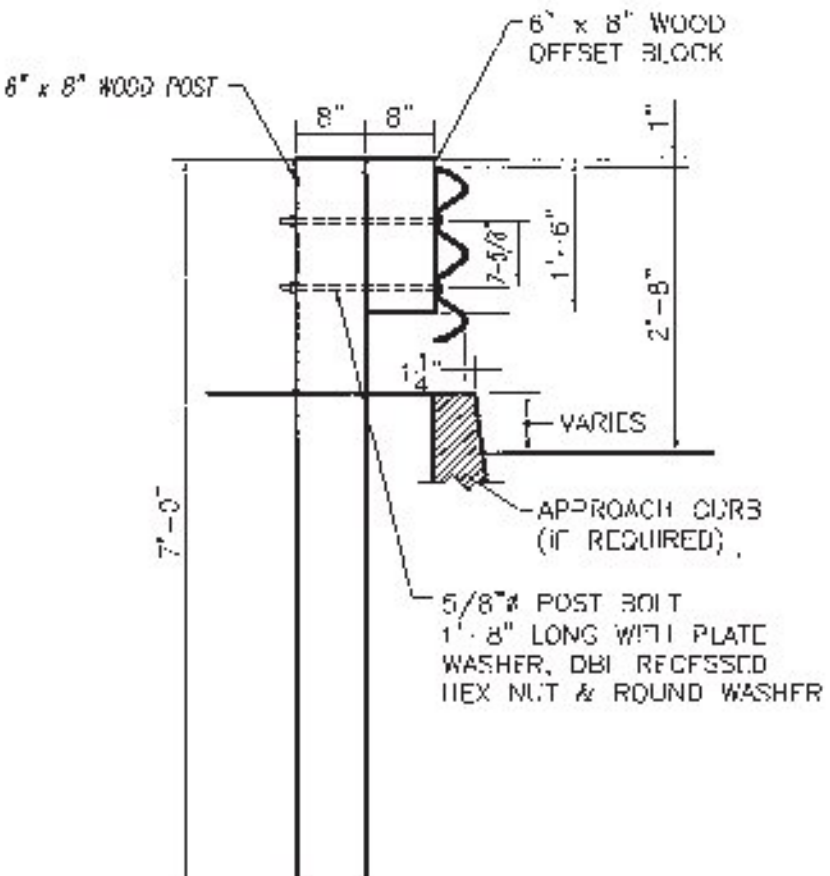
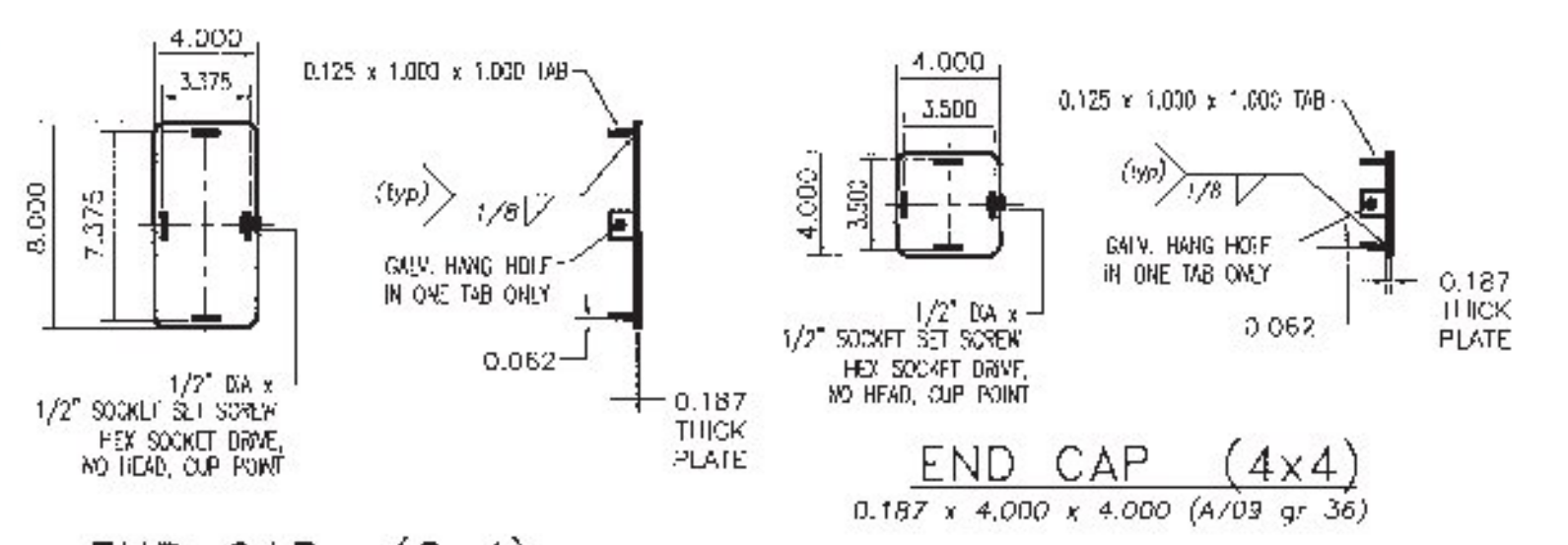
REVIEWED AS REQUIRED BY THE CONSTRUCTION CONTRACT DOCUMENTS AND APPROVED, BUT ONLY FOR CONFORMANCE TO THE DESIGN CONCEPT OF THE WORK, AND SUBJECT TO FURTHER LIMITATIONS AND REQUIREMENTS CONTAINED IN THE CONSTRUCTION CONTRACT DOCUMENTS.

REJECTED REVISE AND RESUBMIT APPROVED AS NOTED

CORRECTIONS OR COMMENTS MADE ON THE SHOP DRAWINGS DURING THIS REVIEW DID NOT RELIEVE CONTRACTOR FROM COMPLIANCE WITH REQUIREMENTS OF THE DRAWINGS AND SPECIFICATIONS. THIS CHECK IS ONLY FOR REVIEW OF GENERAL CONFORMANCE WITH THE DESIGN CONCEPT OF THE PROJECT AND GENERAL COMPLIANCE WITH THE INFORMATION GIVEN IN THE CONTRACT DOCUMENTS. THE CONTRACTOR IS RESPONSIBLE FOR CONFIRMING AND CORRECTING ALL QUANTITIES AND DIMENSIONS. SELECT FABRICATION PROCESSES AND TECHNIQUES OF CONSTRUCTION COORDINATING THEIR WORK WITH THAT OF ALL OTHER TRADES AND PERFORMING THEIR WORK IN A SAFE AND SATISFACTORY MANNER.

CD Consulting Engineers
500 Commercial Street
Manchester, NH 03101
603-686-8223

Job Number: 120174
Reviewed by: AEG
Date: 05/14/2014



HIGHWAY SAFETY CORP
GLASTONBURY, CT
860-633-9445

TEN 871.72 GUARDRAIL APPROACH SECTION, GALVANIZED 2 RAIL BOX BEAM (S-350S)

BRO 1449(31)
ROARING BROOK ROAD (TH2) BRIDGE #8
TOWN OF BARTON, ORLEANS COUNTY VT

CERTIFIED FABRICATOR

2045

3 of 4

DATE: 04-22-15