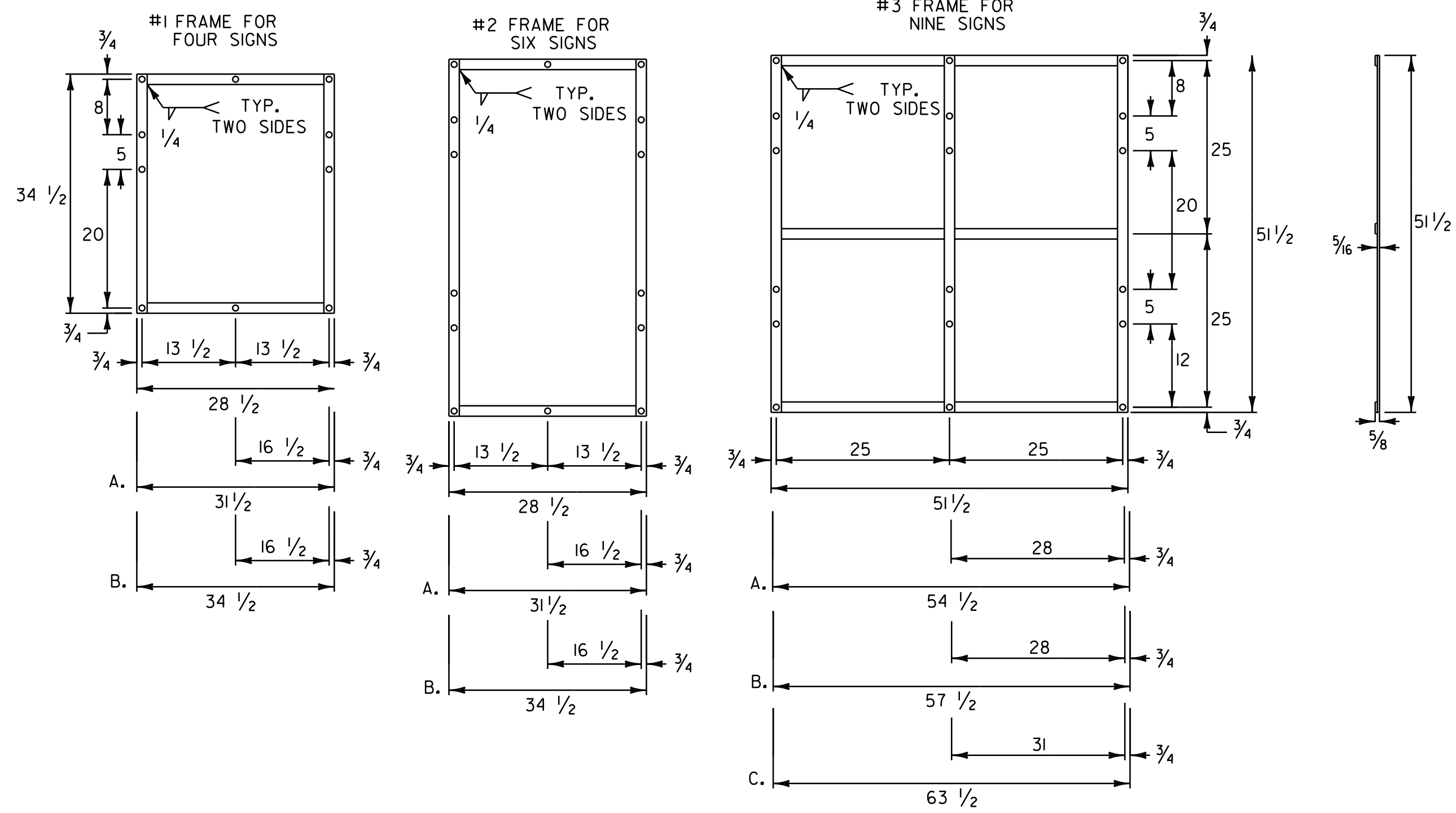


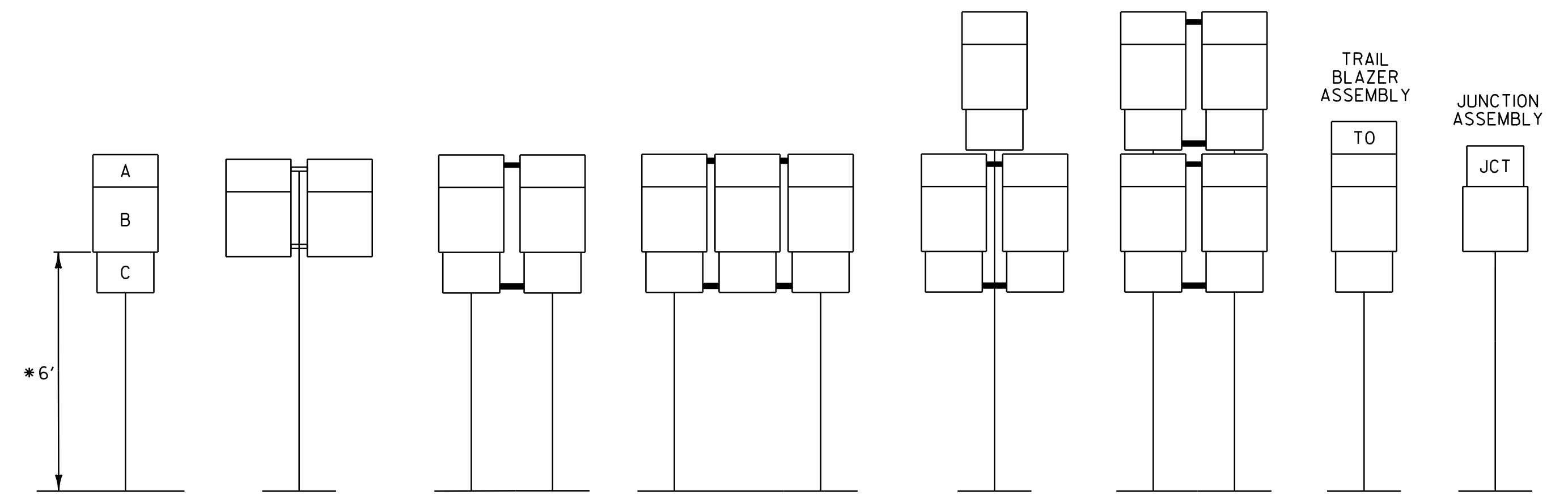
ROUTE MARKER ASSEMBLY FRAMES



NOTES:

- I. NOTES FOR 1 AND 2 FRAME:
 - A. WITH ONE 30 INCH THREE DIGIT SIGN IN AN OUTSIDE POSITION.
 - B. WITH TWO 30 INCH THREE DIGIT SIGNS
2. NOTES FOR 3 FRAME:
 - A. WITH ONE 30 INCH THREE DIGIT SIGN IN AN OUTSIDE POSITION.
 - B. WITH ONE 30 INCH THREE DIGIT SIGN IN THE CENTER POSITION OR TWO SUCH SIGNS IN THE OUTSIDE POSITIONS.
 - C. WITH THREE 30 INCH THREE DIGIT SIGNS.
3. ALL HOLES SHALL BE 7/16 INCH DIAMETER. FOR OTHER SIGN COMBINATIONS, THAN ABOVE, THE FRAME DIMENSIONS AND HOLE SPACING SHALL BE MODIFIED AS NECESSARY. THE FRAME SHALL BE PAINTED WITH ONE COAT OF PRIMER AND A SECOND COAT OF BLACK PAINT. THE PAINT SHALL BE OF THE TYPE USED ON EXTERIOR METAL SURFACES TO PREVENT METAL CORROSION.
4. STANDARD FRAMES SHALL BE 5/16 INCH x 1 1/2 INCH WELDED A-36 STEEL.
5. ALL DIMENSIONS SHOWN IN INCHES UNLESS OTHERWISE NOTED.

STANDARD MOUNTING OF ROUTE MARKER ASSEMBLIES



- A - CARDINAL DIRECTION MARKER
- B - ROUTE NUMBER
- C - ADVANCE TURN ARROW OR DIRECTIONAL ARROW

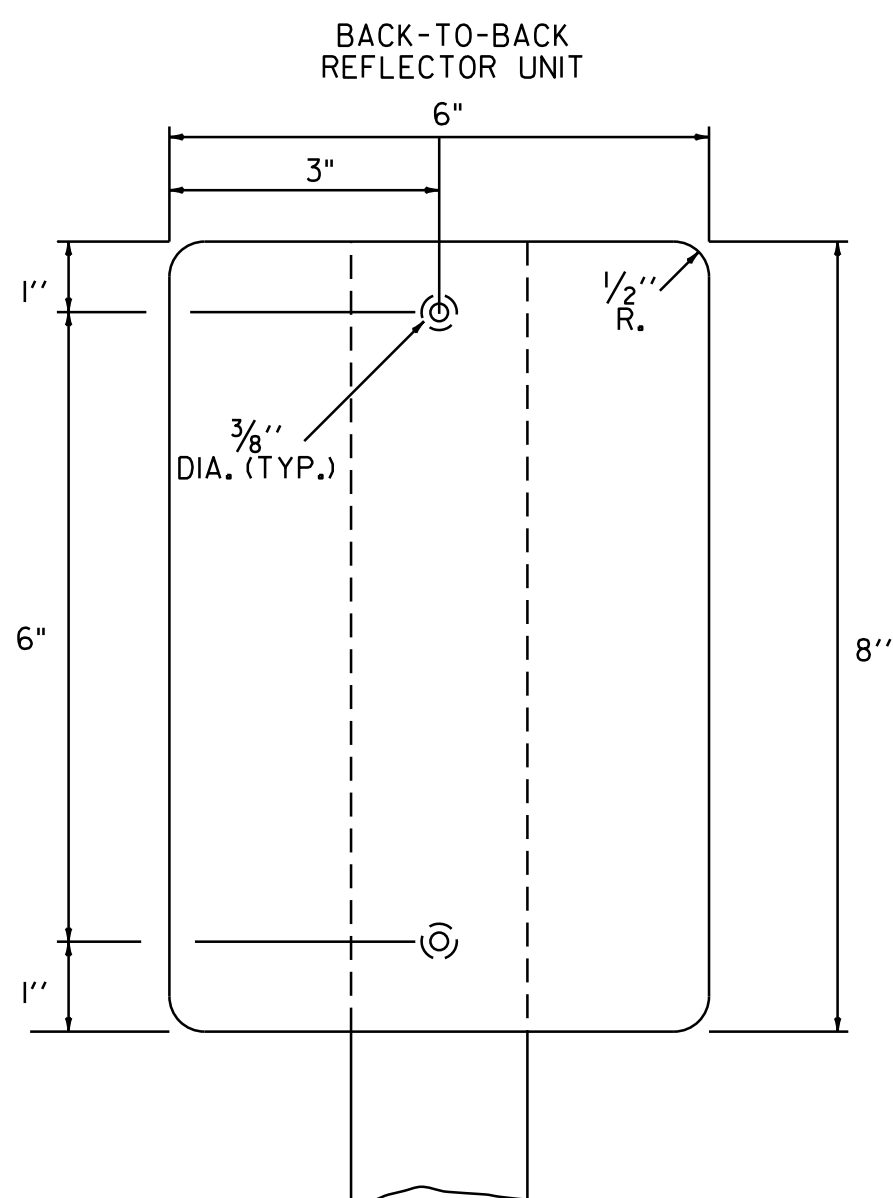
INSTALLATION SEQUENCE:

IN MULTIPLE HORIZONTAL MOUNTINGS PLACE A ROUTE MARKER ASSEMBLY INDICATING A LEFT TURN ON THE LEFT SIDE OF THE ASSEMBLY; RIGHT TURN ON THE RIGHT SIDE. FOR VERTICALLY STACKED MOUNTINGS PLACE THE STRAIGHT THROUGH MOVE INDICATION ON TOP, THE LEFT OR RIGHT TURNS AS APPROPRIATE BENEATH.

NOTES:

1. ALL DIMENSIONS SHOWN IN INCHES UNLESS OTHERWISE NOTED.
2. VERTICAL FRAME MEMBERS SHALL LINE UP WITH SIGN POST ON WHICH THEY ARE MOUNTED.

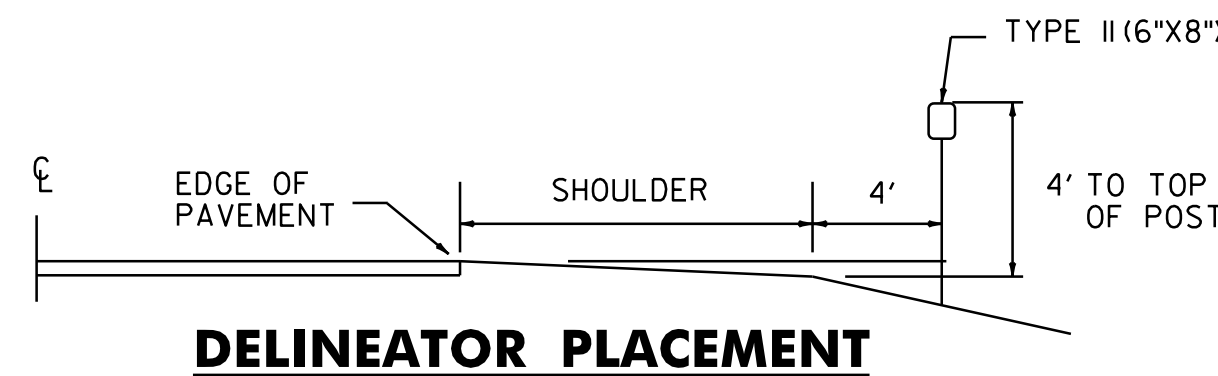
* WHERE PARKING OR PEDESTRIAN TRAFFIC WILL OCCUR IN THE IMMEDIATE VICINITY OF THESE SIGNS MINIMUM VERTICAL CLEARANCE SHALL BE INCREASED TO SEVEN FEET.



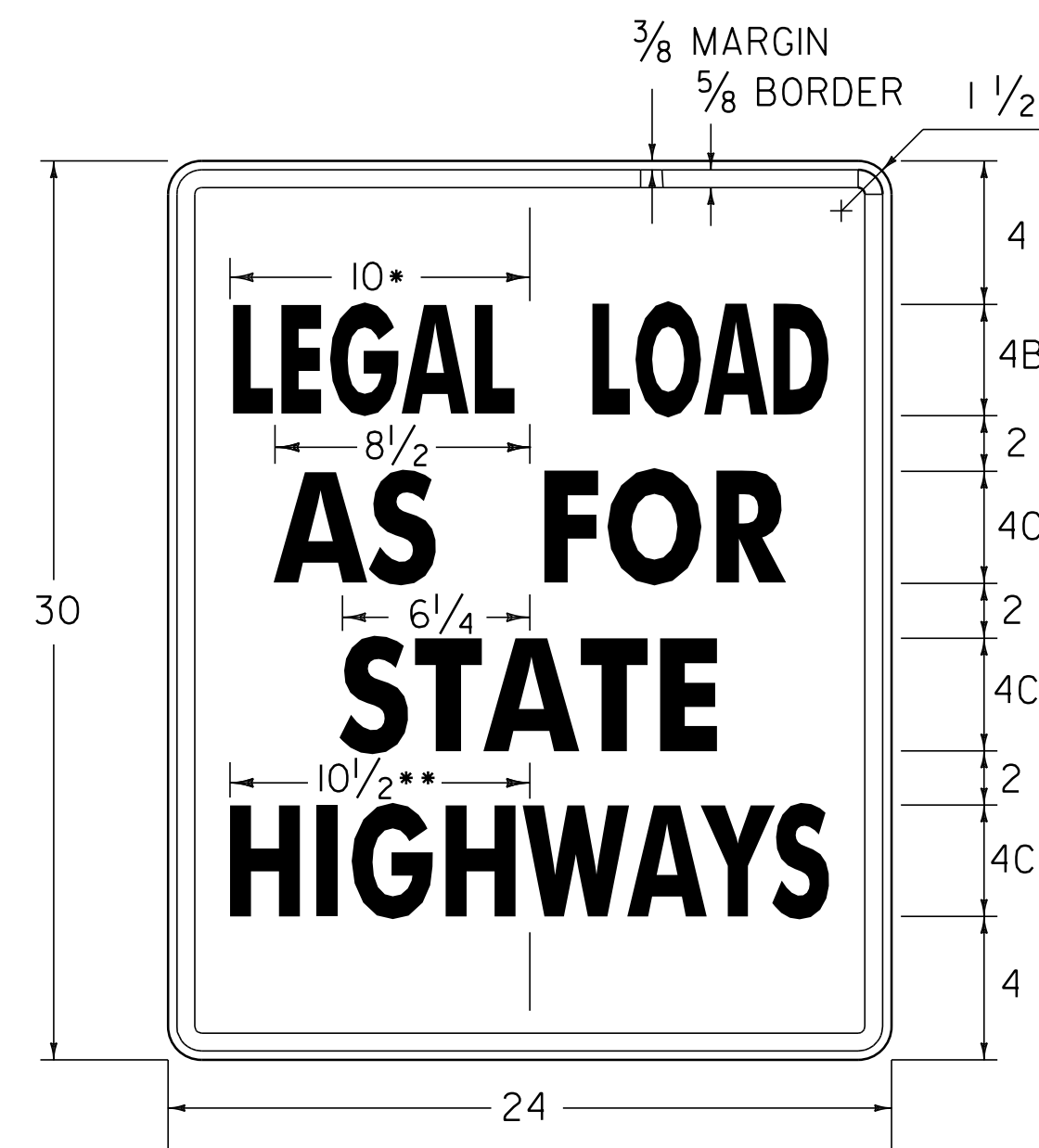
TYPE II (6"X8")

DELINEATORS WITH RETROREFLECTIVE SHEETING

1. MATERIAL FOR RETROREFLECTIVE SHEETING FOR DELINEATORS SHALL BE A 0.063" ALUMINUM BACKING WITH A WHITE ASTM TYPE III OR TYPE IV.
2. ALL DELINEATOR POSTS SHALL BE 1.75 LB/FT SQUARE STEEL WITH A 12 GAUGE ANCHOR, WITH AN ANCHOR REVEAL OF 2 INCHES.



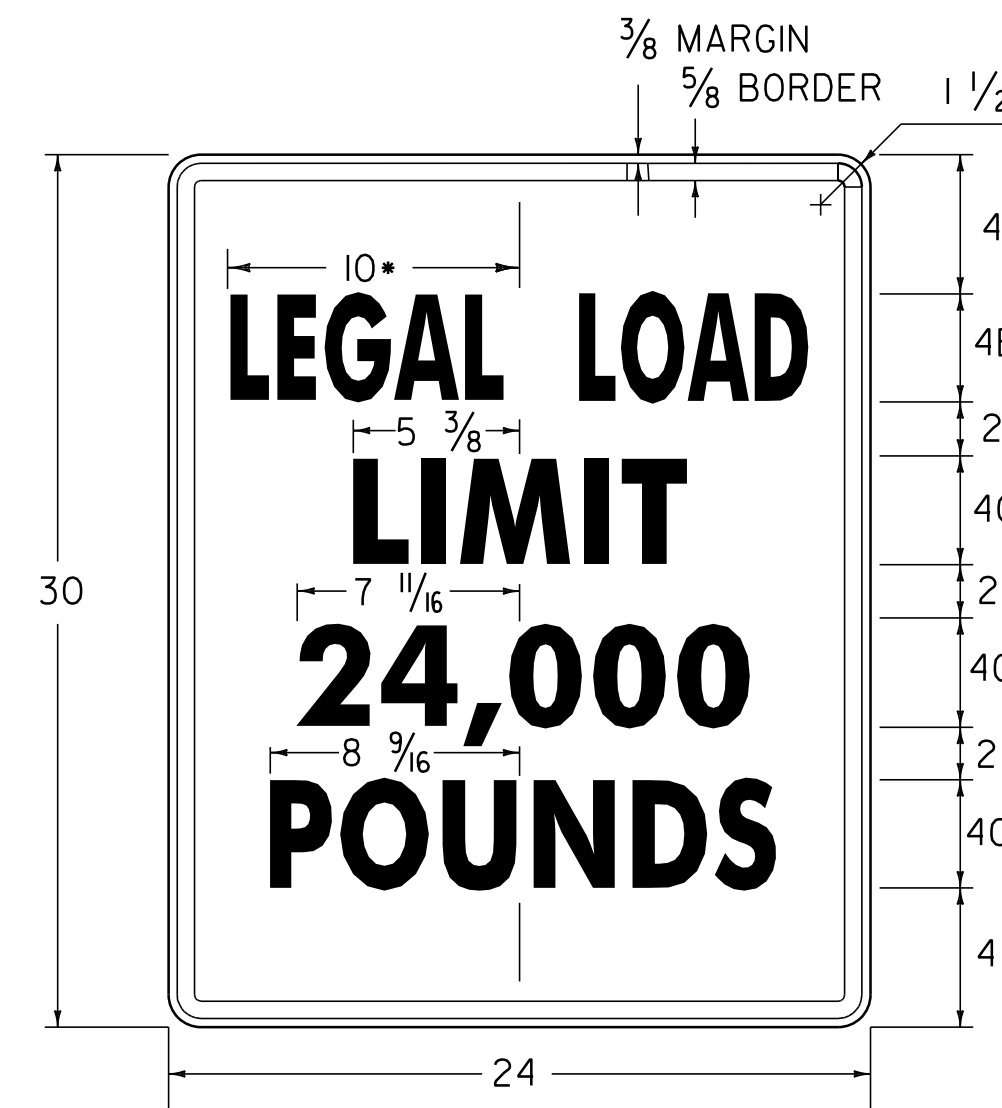
DELINEATOR PLACEMENT



- * REDUCE SPACING 50 %
- ** REDUCE SPACING 38 %

VR-079

1.500" RADIUS, 0.625" BORDER, 0.375" INDENT
 COLORS: LEGEND - BLACK
 BACKGROUND - WHITE
 TEXT STYLE: "LEGAL LOAD" B; "AS FOR" C;
 "STATE" C; "HIGHWAY" C



* REDUCE SPACING 50 %
 LINE 3 ALTERNATE - 16,000
VR-017

1.500" RADIUS, 0.625" BORDER, 0.375" INDENT
 COLORS: LEGEND - BLACK
 BACKGROUND - WHITE
 TEXT STYLE: "LEGAL LOAD" B; "LIMIT" C;
 "24,000" C; "POUNDS" C



VR-345

* OPTICALLY CENTER (HERE, TO, CORNER)
 1.500" RADIUS, 0.625" BORDER, 0.375" INDENT
 COLORS: LEGEND - RED
 BACKGROUND - WHITE
 TEXT STYLE: "NO" D; "PARKING" B; "HERE TO" B;
 "CORNER" B

ALL DIMENSIONS SHOWN IN INCHES UNLESS OTHERWISE NOTED.

PROJECT NAME: STATEWIDE NORTHEAST REGION
 PROJECT NUMBER: STPG SIGN HRRR(4)

FILE NAME: I0K016_wrk.dgn
 PROJECT LEADER: JLS
 DESIGNED BY: NLA
 GENERAL SIGN DETAILS SHEET 2

PLOT DATE: 13-SEP-2012 15:46
 DRAWN BY: NLA
 CHECKED BY: JLS
 SHEET 7 OF 64