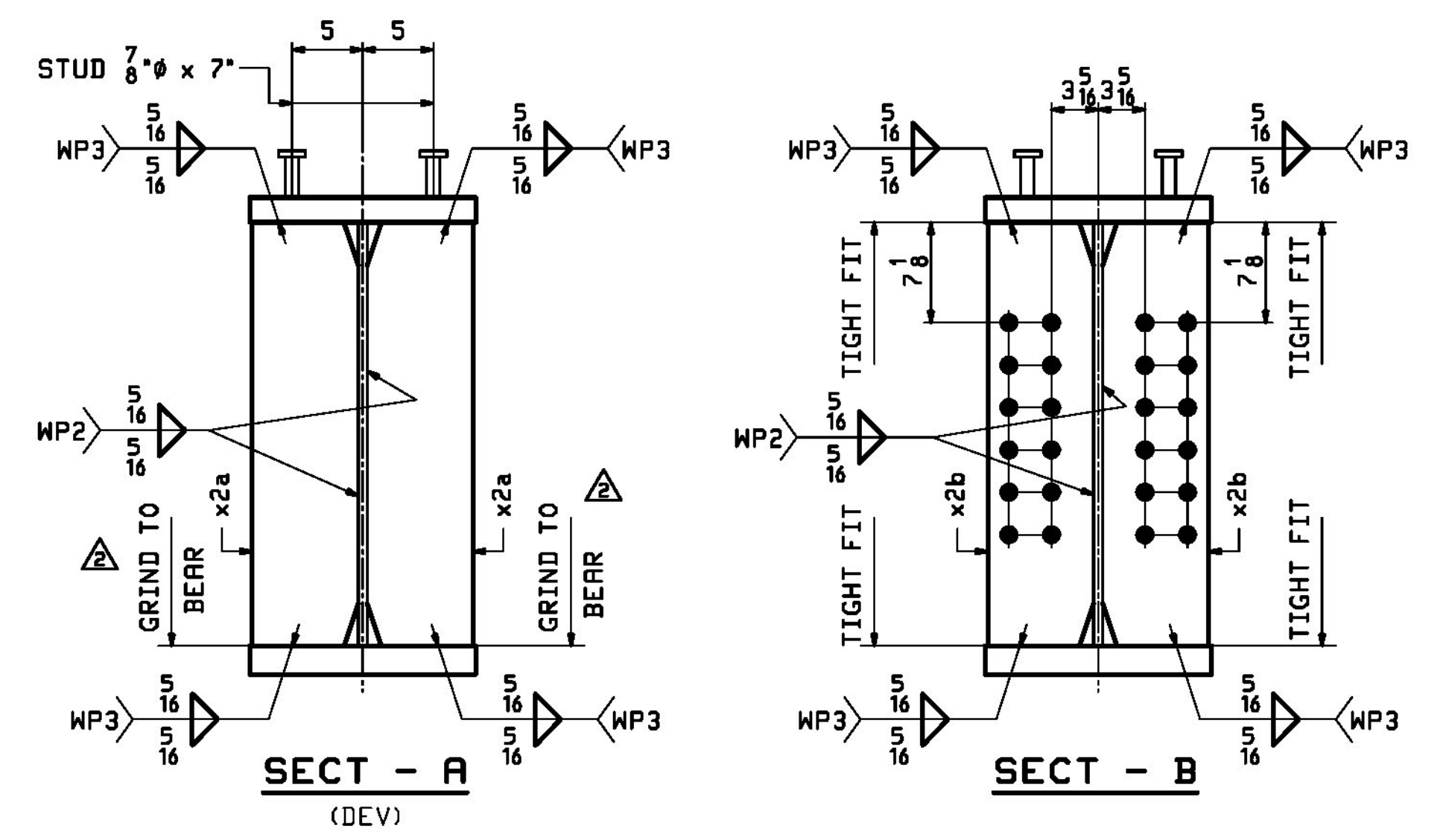
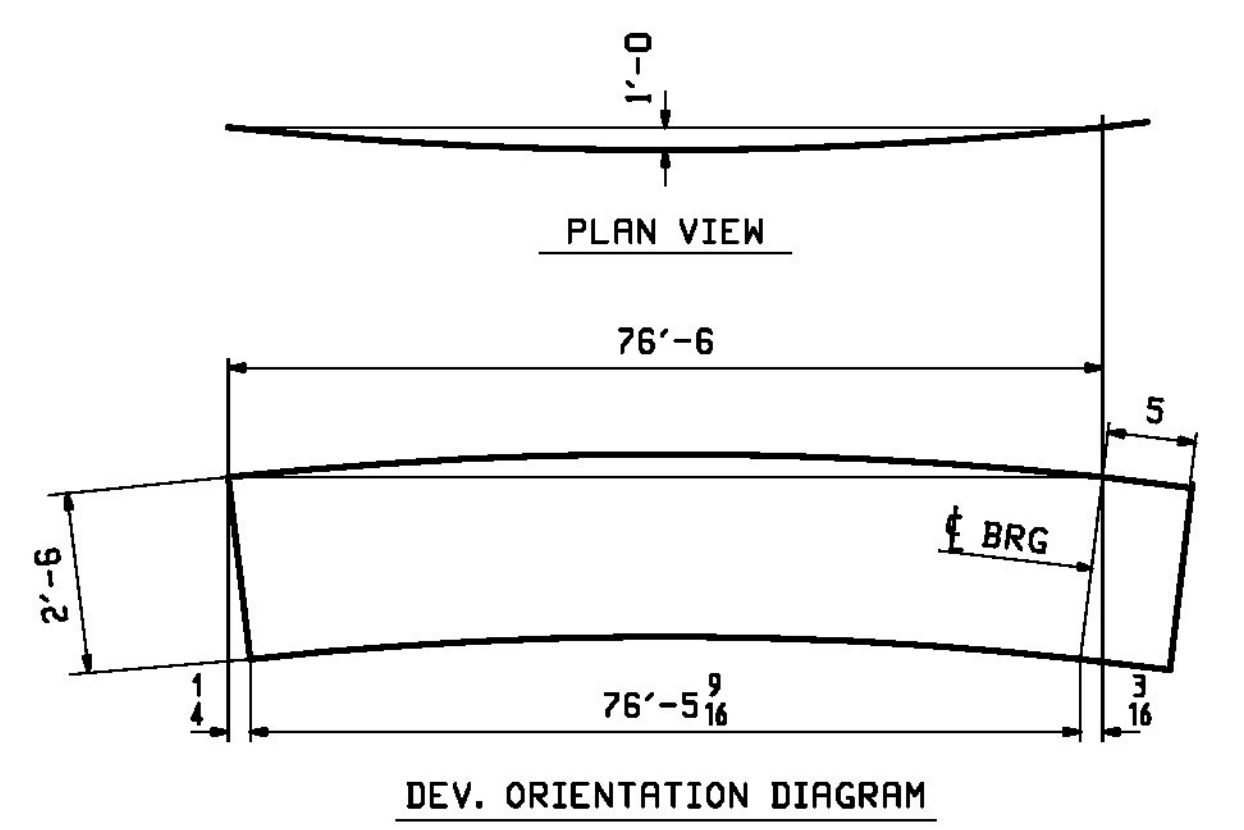


**ONE ~ GIRDER ~ 8G3C(DEV.)**

- NOTES:  
 1. FOR GENERAL NOTES SEE SHEET GNI.  
 2. FOR FIELD SPLICE DETAILS SEE SHEET X1.  
 3. FOR STANDARD DETAILS SEE SHEET X2.  
 4. FOR CAMBER DIAGRAM SEE SHEET C1.  
 5. FOR FLANGE DIAGRAM SEE SHEET F1.  
 6. T2 - DENOTES MATERIAL SUBJECT TO CHARPY V-NOTCH TESTING.

BILL OF MATERIAL					JOB NO.	DRAWING NO.	REV.	
					645	8		
PAGE LINE	MARK	QTY	MARK	MATERIAL	LENGTH FT INCHES	REMARKS	HT	PROCUREMENT NOTES
	8G3C	1		GIRDER		METALIZED	21299	
1	Y	1	wa	PL 3/8 x 30	76 11	M270-S0T2	4907	
1	N	1	ta	PL 1/2 x 16	76 11	M270-S0T2	7328	
1	C	1	ba	PL 2 x 16	76 10 9/16	M270-S0T2	8371	
4	C	2	x2a	PL 3/2 x 7 1/2	2 6	MIE M270-S0T2	48	
4	D	8	x2b	PL 1/2 x 7 1/2	2 6	M270-S0T2	32	
5	D	258		STUD 7/8 #	0 7	STUDS RIBS	1	



REV.	DATE	REMARKS	DWN	CHK	APVL	SHOP
1	1/28/2018	APPROVAL COMMENTS	LWD	WJL		
0	12/9	APPROVAL COMMENTS	LWD	WJL		

MATERIAL: M270-S0T2 UN. SURFACE PREP. & PRINT: SEE GNI. HOLES: 15/16 # UN. SHOP BOLTS: NONE

DESCRIPTION: GIRDER - 8G3C

**Casco Bay Steel Structures, Inc.**  
 CASCO BAY STEEL STRUCTURES, INC.  
 1 WALLACE AVE. PHONE (207) 780-6722  
 SOUTH PORTLAND, ME 04106 FAX. (207) 780-6726

STRUCTURE: TH-2 (RIVER ROAD) BRIDGE #10 COUNTY OF ADDISON  
 DRAWN: LWD DATE: 10/23  
 CHKD: WJL DATE: 10/27

LOCATION: TOWN OF NEW HAVEN, VT  
 JOB NO. 645 DWG NO. 8

PROJ NO. BRF 0183 (1)  
 CUSTOMER: CCS CONSTRUCTORS, INC.

X1: The, Inc. 81, 823, 034038 PA. / 10/27/2018 11:45 AM