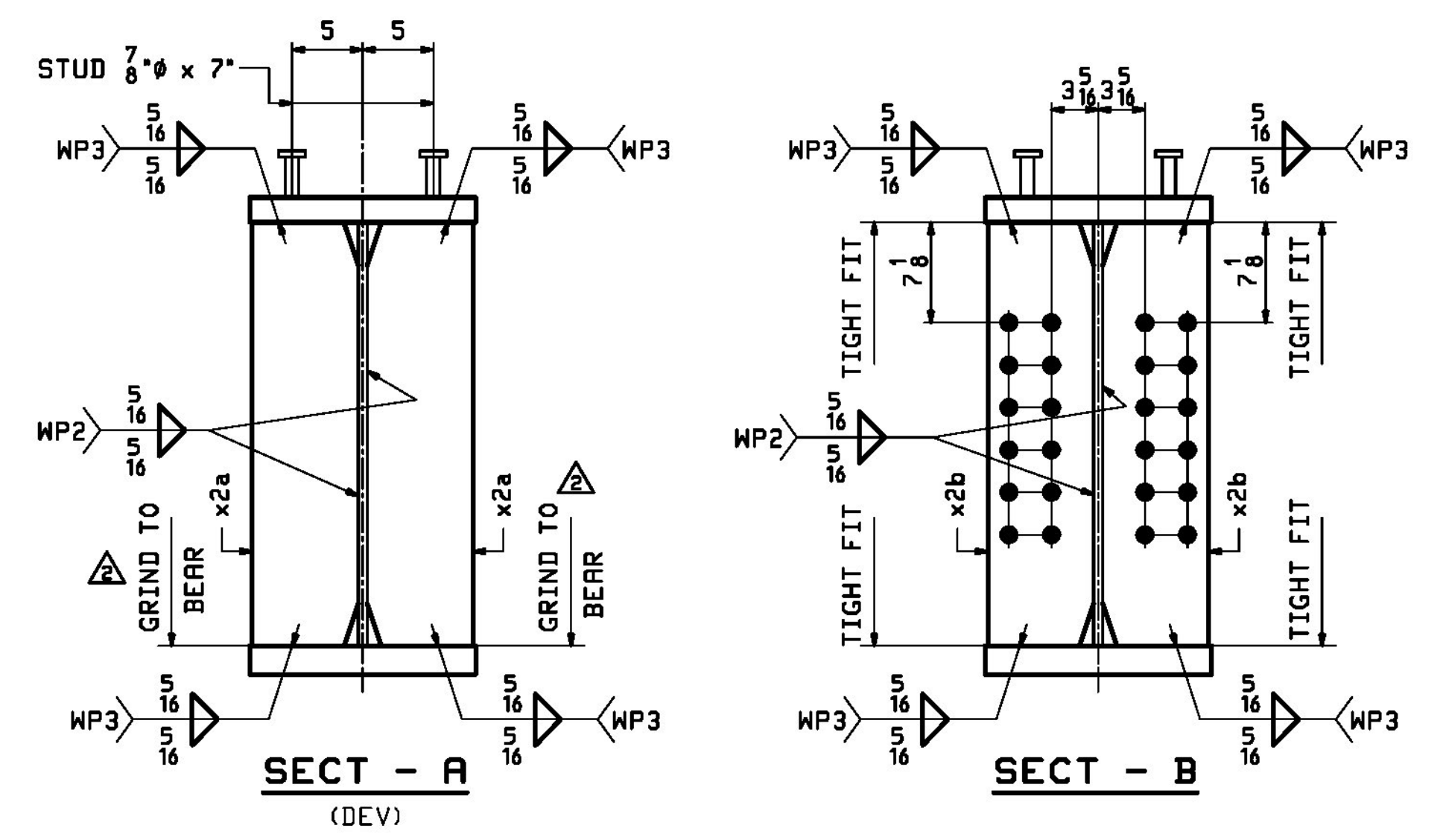
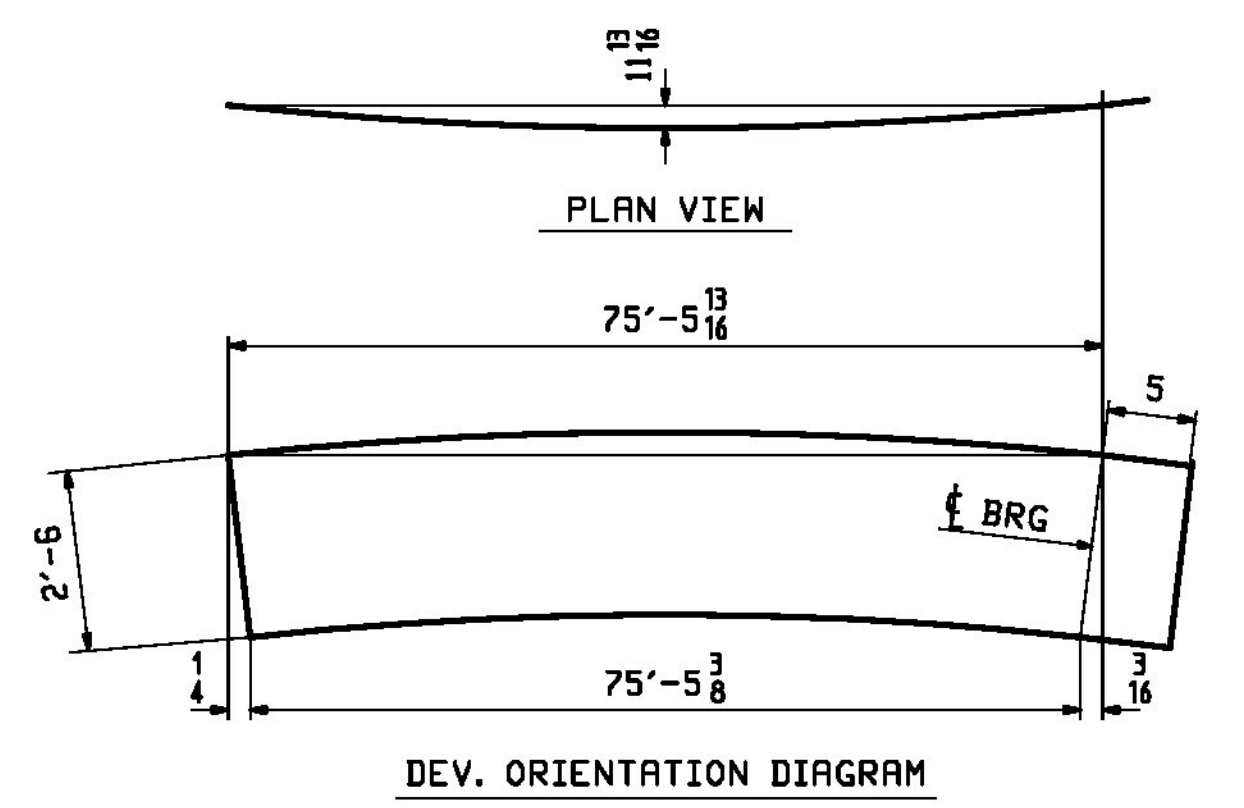
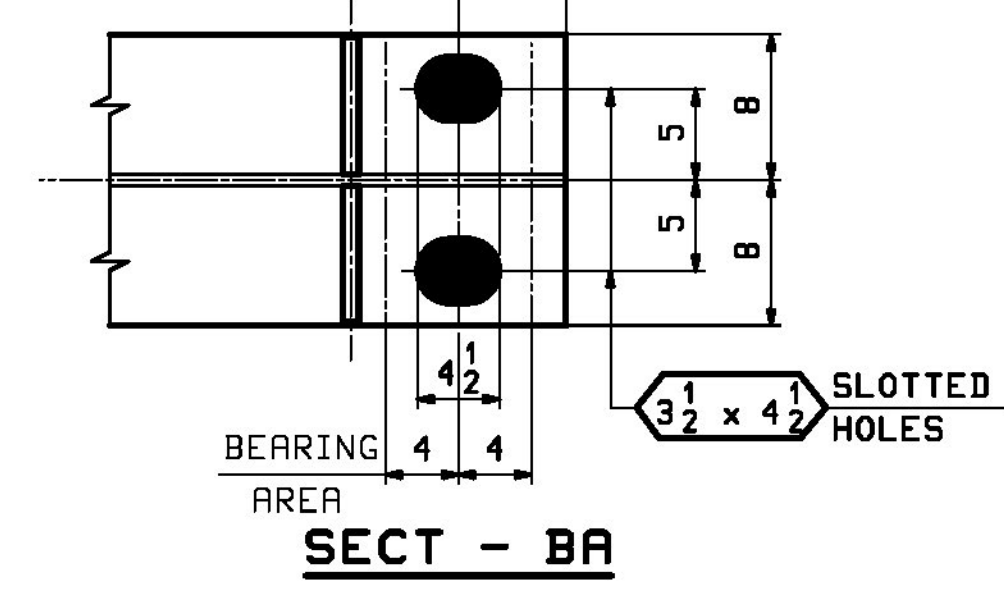


ONE ~ GIRDER ~ 7G2C(DEV.)

- NOTES:
 1. FOR GENERAL NOTES SEE SHEET GNI.
 2. FOR FIELD SPLICE DETAILS SEE SHEET X1.
 3. FOR STANDARD DETAILS SEE SHEET X2.
 4. FOR CAMBER DIAGRAM SEE SHEET C1.
 5. FOR FLANGE DIAGRAM SEE SHEET F1.
 6. T2 - DENOTES MATERIAL SUBJECT TO CHARPY V-NOTCH TESTING.



BILL OF MATERIAL					JOB NO.	DRAWING NO.	REV.	
					645	7		
PAGE LINE	MARK	QTY	MARK	MATERIAL	LENGTH FT INCHES	REMARKS	HT	PROCUREMENT NOTES
	7G2C	1		GIRDER		METALIZED		21022
2	A	1	wa	PL 3/8 x 30	75 10 13/16	M270-S0T2		4843
1	Q	1	ta	PL 1/2 x 16	75 10 13/16	M270-S0T2		7232
1	E	1	ba	PL 2 x 16	75 10 3/8	M270-S0T2		8261
4	C	2	x2a	PL 3/2 x 7 1/2	2 6	MIE M270-S0T2		48
4	D	8	x2b	PL 1/2 x 7 1/2	2 6	M270-S0T2		32
5	D	254		STUD 7/8 #	0 7	STUDS NONE		1

REV.	DATE	REMARKS	DWN	CHK	APVL	SHOP
1/28/2018		APPROVAL COMMENTS	LWD	WJL		
12/9		APPROVAL COMMENTS	LWD	WJL		

MATERIAL: M270-S0T2 UN. SURFACE PREP. & PRINT: SEE GNI. HOLES: 15/16 # UN. SHOP BOLTS: NONE

DESCRIPTION: GIRDER - 7G2C

Casco Bay Steel Structures, Inc.
 CASCO BAY STEEL STRUCTURES, INC.
 1 WALLACE AVE. PHONE (207) 780-6722
 SOUTH PORTLAND, ME 04106 FAX. (207) 780-6726

STRUCTURE: TH-2 (RIVER ROAD) BRIDGE #10 COUNTY OF ADDISON
 DRAWN: LWD DATE: 10/23
 CHKD: WJL DATE: 10/27

LOCATION: TOWN OF NEW HAVEN, VT
 JOB NO. DWG NO.
 PROJ NO. BRF 0183 (1) 645 7
 CUSTOMER: CCS CONSTRUCTORS, INC. REV. 7

X1: The, Inc. 81, 803, 0382005 PM, 1/28/2018 10:23:47, Rev0