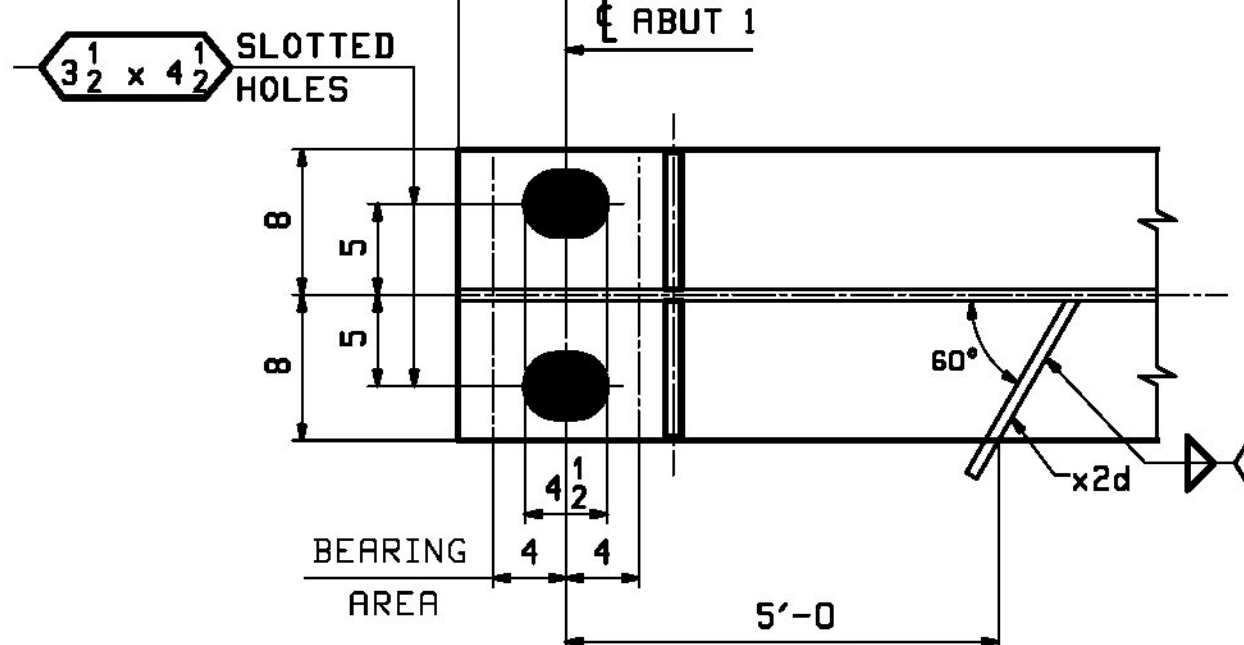
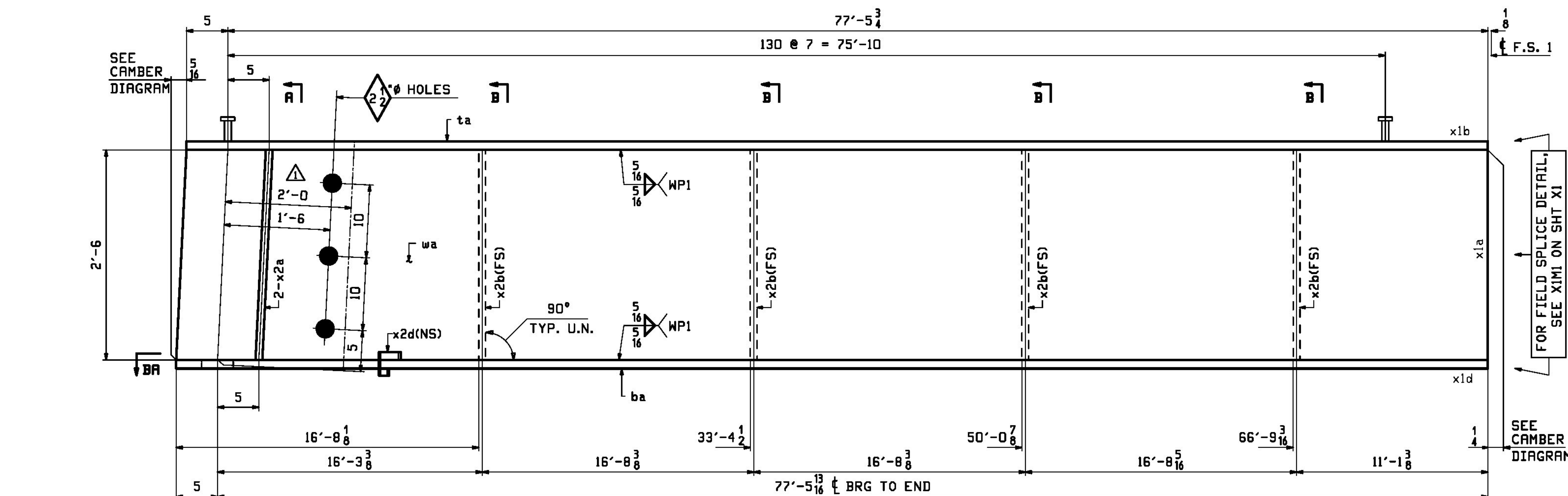


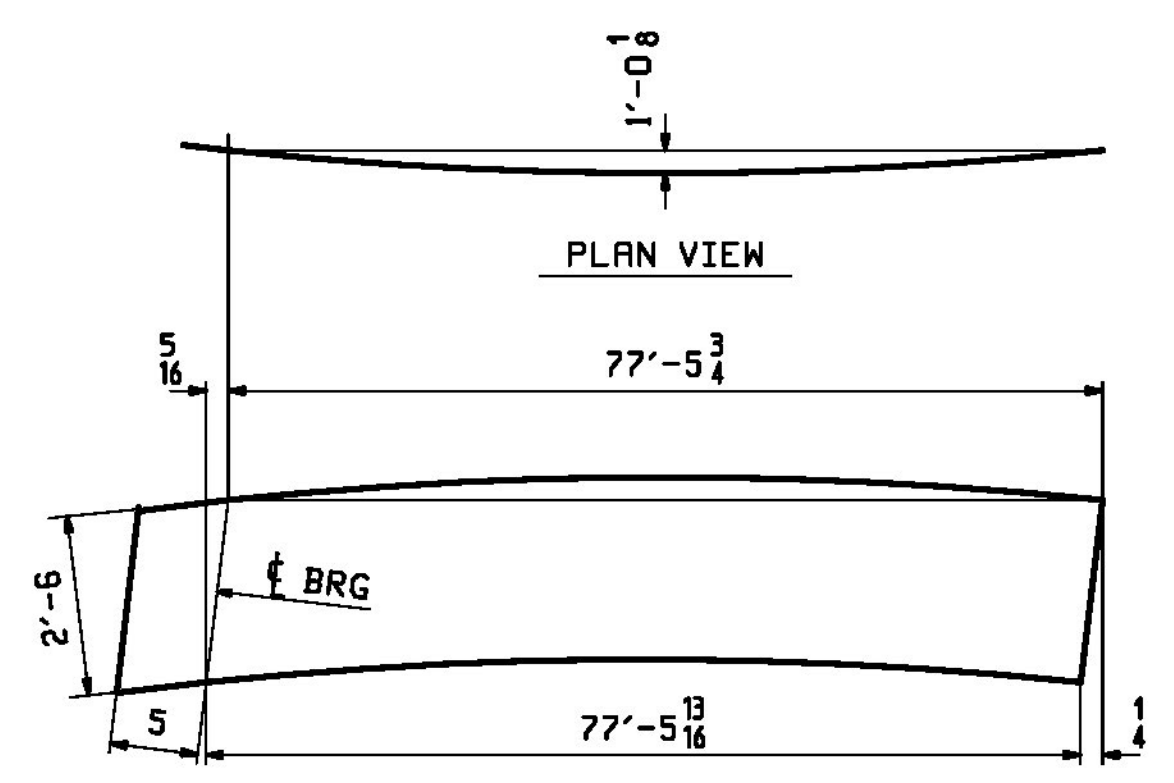
RBM INFO		BILL OF MATERIAL				JOB NO.	DRAWING NO.	REV.
4G4A						645	4	
PAGE LINE	MARK	QTY	MARK	MATERIAL	LENGTH FT INCHES	REMARKS	WT	PROCUREMENT NOTES
				GIRDER		METALIZED	21449	
1	H	1	wa	PL 3/8 x 30	77' 11 1/2	M270-S0T2	4972	
1	L	1	ta	PL 1/2 x 16	77' 10 1/2	M270-S0T2	7422	
1	R	1	ba	PL 2 x 16	77' 10 1/2	M270-S0T2	8483	
4	C	2	x2a	PL 3/2 x 7 1/2	2' 6"	MIE M270-S0T2	48	
4	D	4	x2b	PL 1/2 x 7 1/2	2' 6"	M270-S0T2	32	
4	M	1	x2d	PL 1/2 x 4	0' 11"	DRIP BAR	3	
5	D	262		STUD 7/8 #	0' 7"	STUDS R108	1	



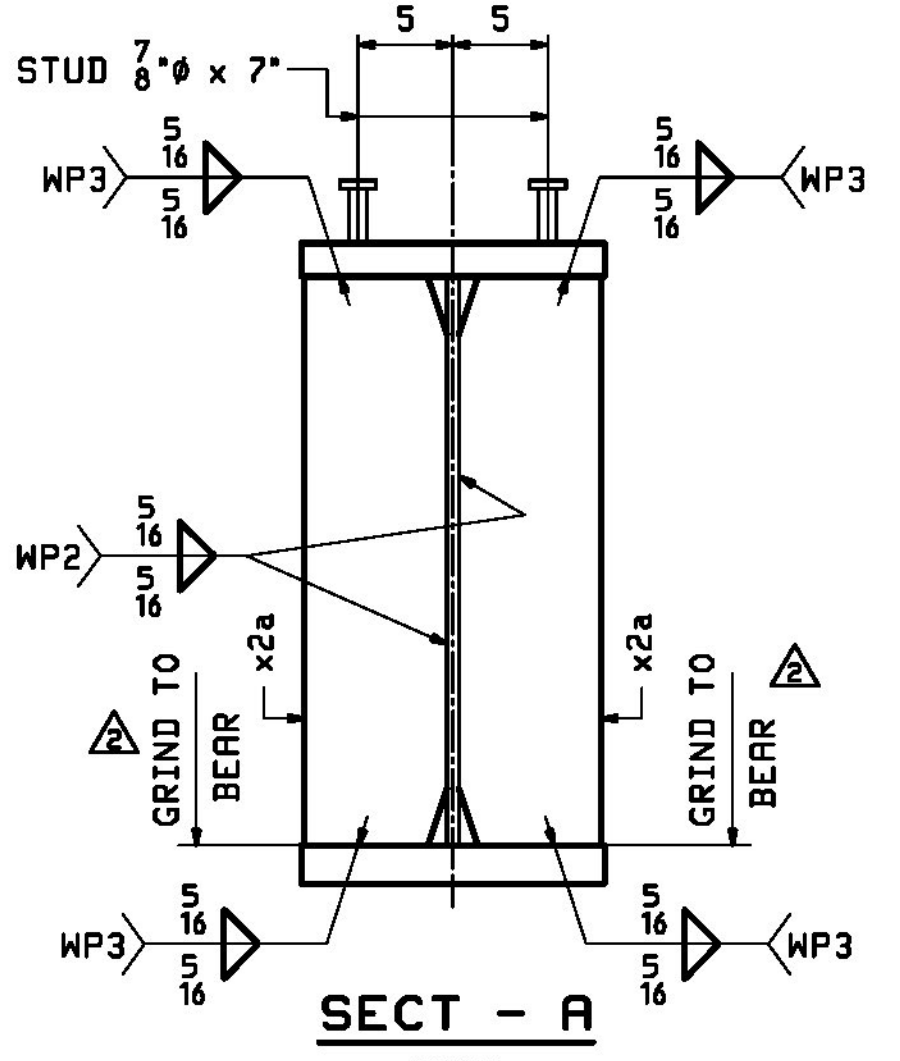
SECT - BA

ONE ~ GIRDER ~ 4G4A(DEV.)

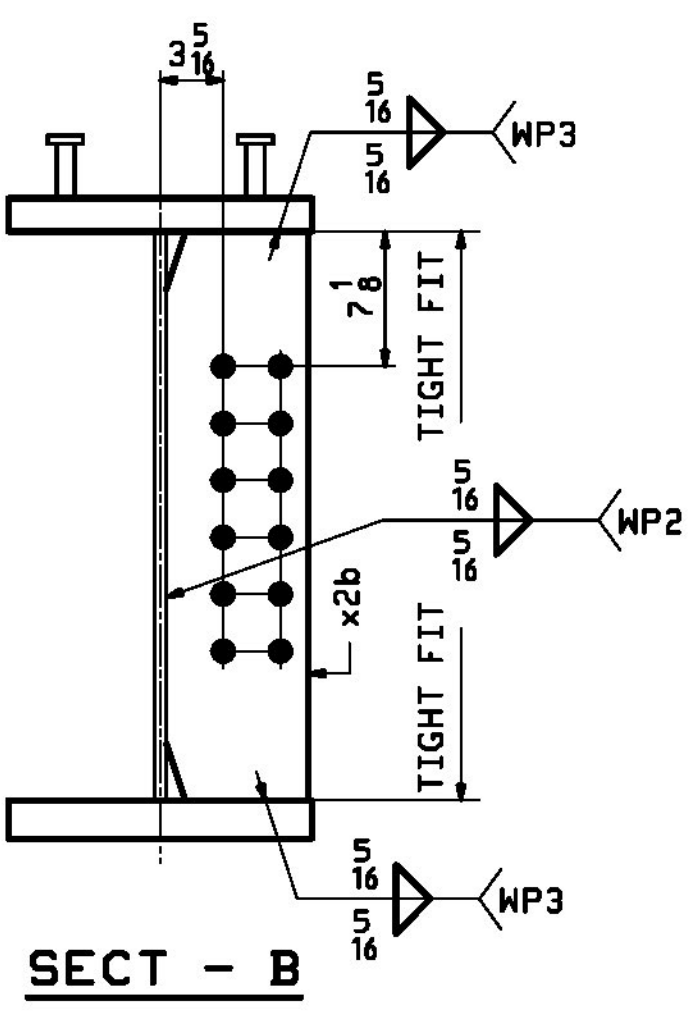
- NOTES:
 1. FOR GENERAL NOTES SEE SHEET GNI.
 2. FOR FIELD SPLICE DETAILS SEE SHEET X1.
 3. FOR STANDARD DETAILS SEE SHEET X2.
 4. FOR CAMBER DIAGRAM SEE SHEET C1.
 5. FOR FLANGE DIAGRAM SEE SHEET F1.
 6. T2 - DENOTES MATERIAL SUBJECT TO CHARPY V-NOTCH TESTING.



DEV. ORIENTATION DIAGRAM



SECT - A (DEV)



SECT - B

REV.	DATE	REMARKS	DWN	CHK	APVL	SHOP
1/28	2018	APPROVAL COMMENTS	LWD	WJL		
0	12/9	APPROVAL COMMENTS	LWD	WJL		

MATERIAL: M270-S0T2 UN. SURFACE PREP. & PRINT: SEE GNI. HOLES: 15/16 # UN. SHOP BOLTS: NONE

DESCRIPTION: GIRDER - 4G4A

CASCO BAY STEEL STRUCTURES, INC.
 1 WALLACE AVE. PHONE (207) 780-6722
 SOUTH PORTLAND, ME 04106 FAX. (207) 780-6726

STRUCTURE: TH-2 (RIVER ROAD) BRIDGE #10 COUNTY OF ADDISON
 DRAWN: LWD DATE: 10/21
 CHKD: WJL DATE: 10/27

LOCATION: TOWN OF NEW HAVEN, VT
 JOB NO. 645 DWG NO. 4

PROJ NO. BRF 0183 (1)
 CUSTOMER: CCS CONSTRUCTORS, INC.