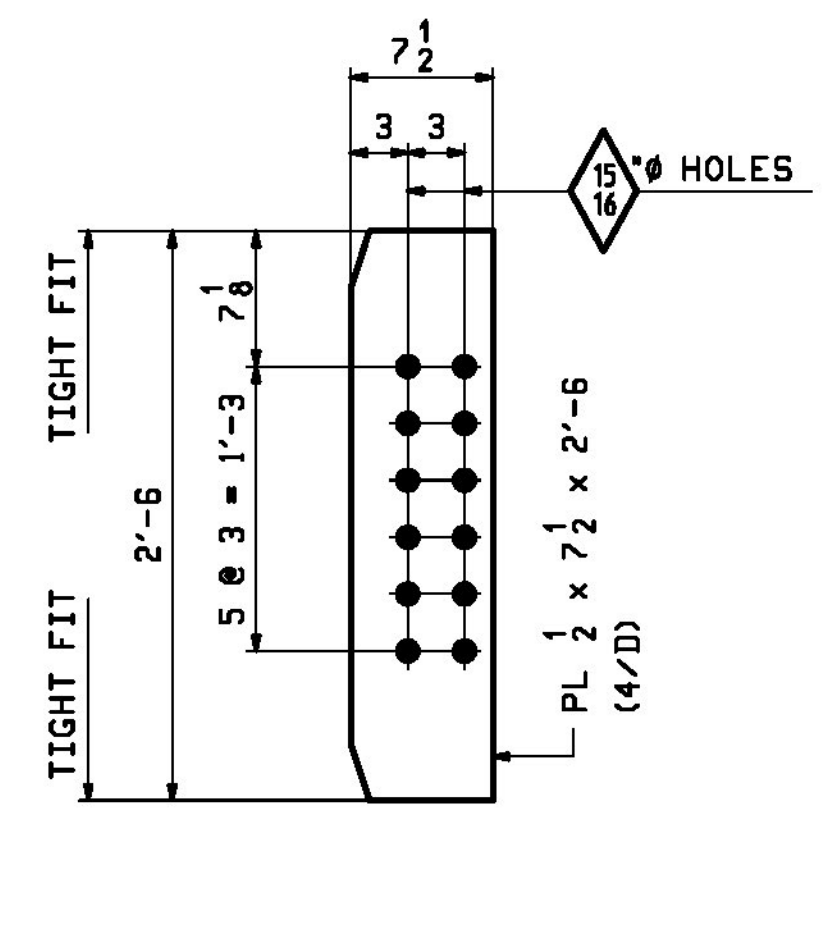
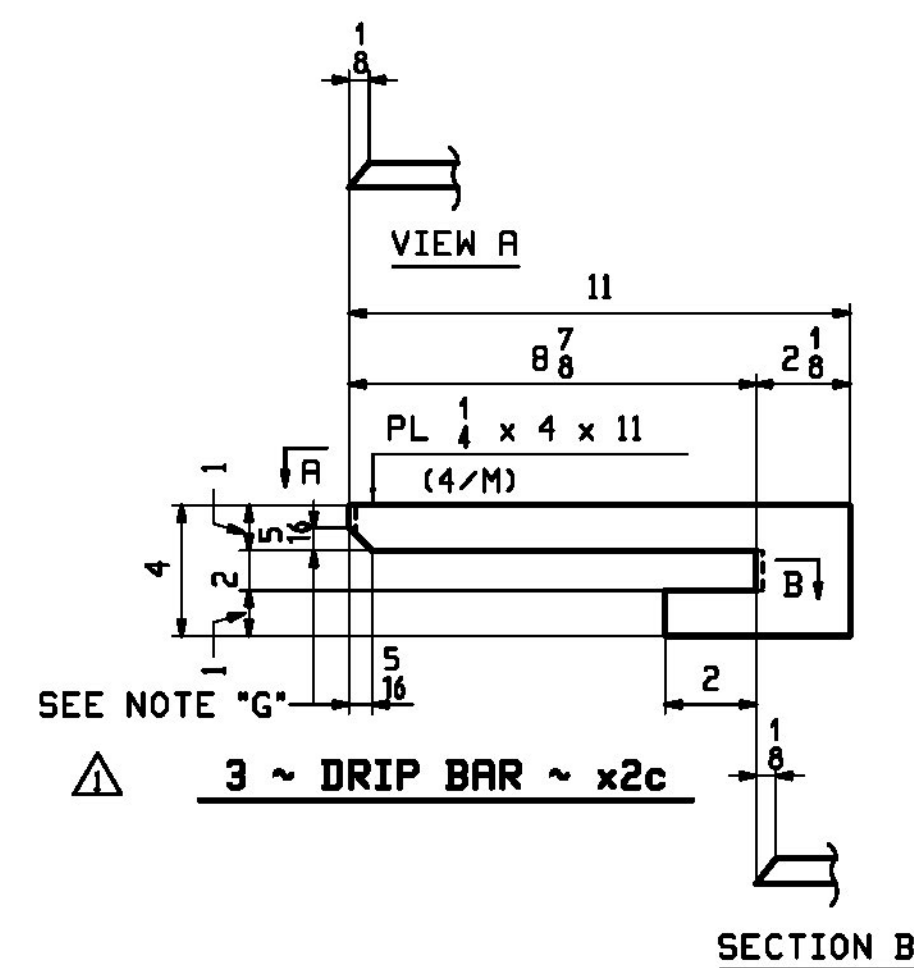


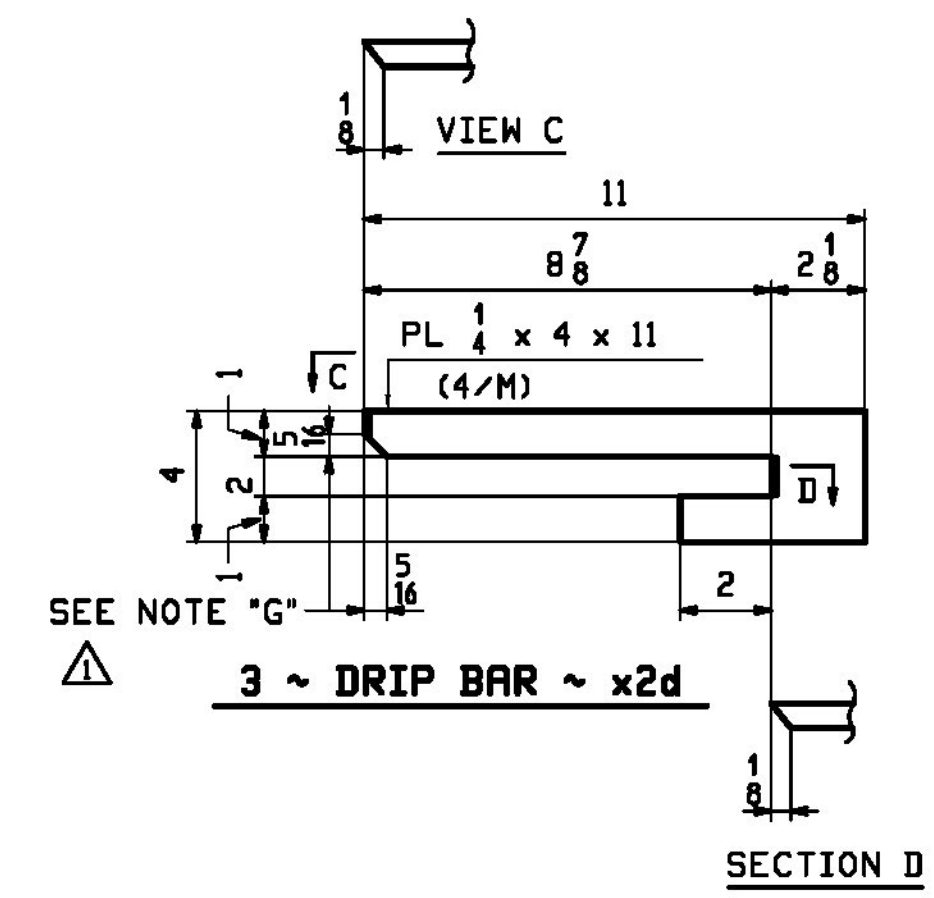
16 - BRG STIFFENERS ~ x2a



48 - CONN STIFFENERS ~ x2b



SECTION B



SECTION D

NOTE "G":
GRIND AS REQUIRED TO ACHIEVE AT TIGHT FIT
CONDITION AGAINST THE FILLET WELD

- NOTES:
1. FOR GENERAL NOTES SEE DRAWING GNI.
2. *T2* DENOTES MATERIAL SUBJECT TO CHARPY V-NOTCH TESTING.

△	1/20 2016	APPROVAL COMMENTS	LWD	WJL			
0							
REV.	DATE	REMARKS	DWN	CHK	APVL	SHOP	
MATERIAL:	M270-50T2 UN	SURFACE PREP. & PAINT:	SEE GNI	HOLES:	AS NOTED	SHOP BOLTS:	NONE
DESCRIPTION: GIRDER STANDARD DETAILS							
STRUCTURE:		TH-2 (RIVER ROAD) BRIDGE #10 COUNTY OF ADDISON		DRAWN:	LWD	DATE:	10/21
LOCATION:		TOWN OF NEW HAVEN, VT		CHKD:	WJL	DATE:	10/27
PROJ NO.	BRF 0183 (1)		JOB NO.	645		DWG NO.	X2
CUSTOMER:	CCS CONSTRUCTORS, INC.		REV.	△			

X:_The_Plan_Bk_2016_08\0183\0183.dwg