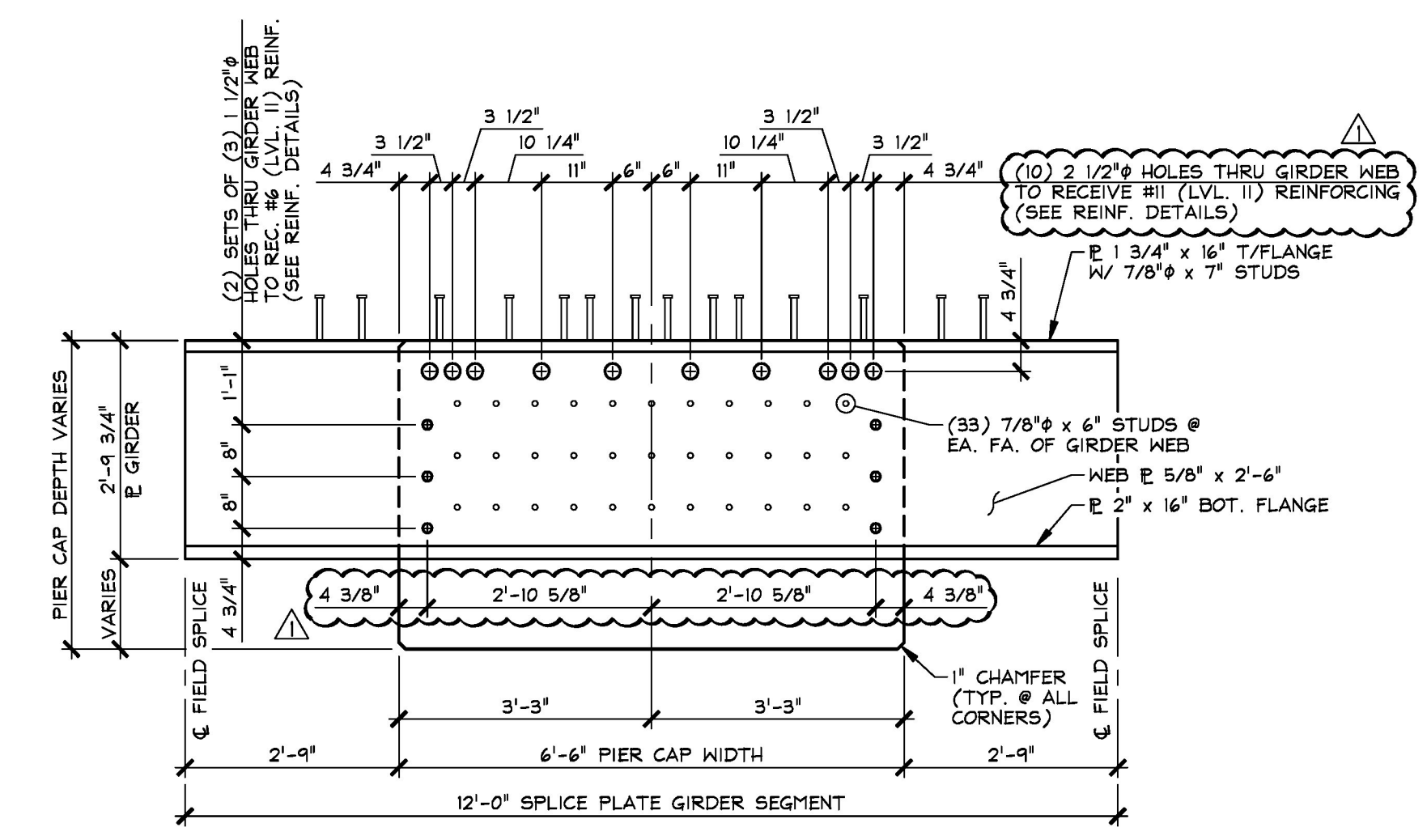
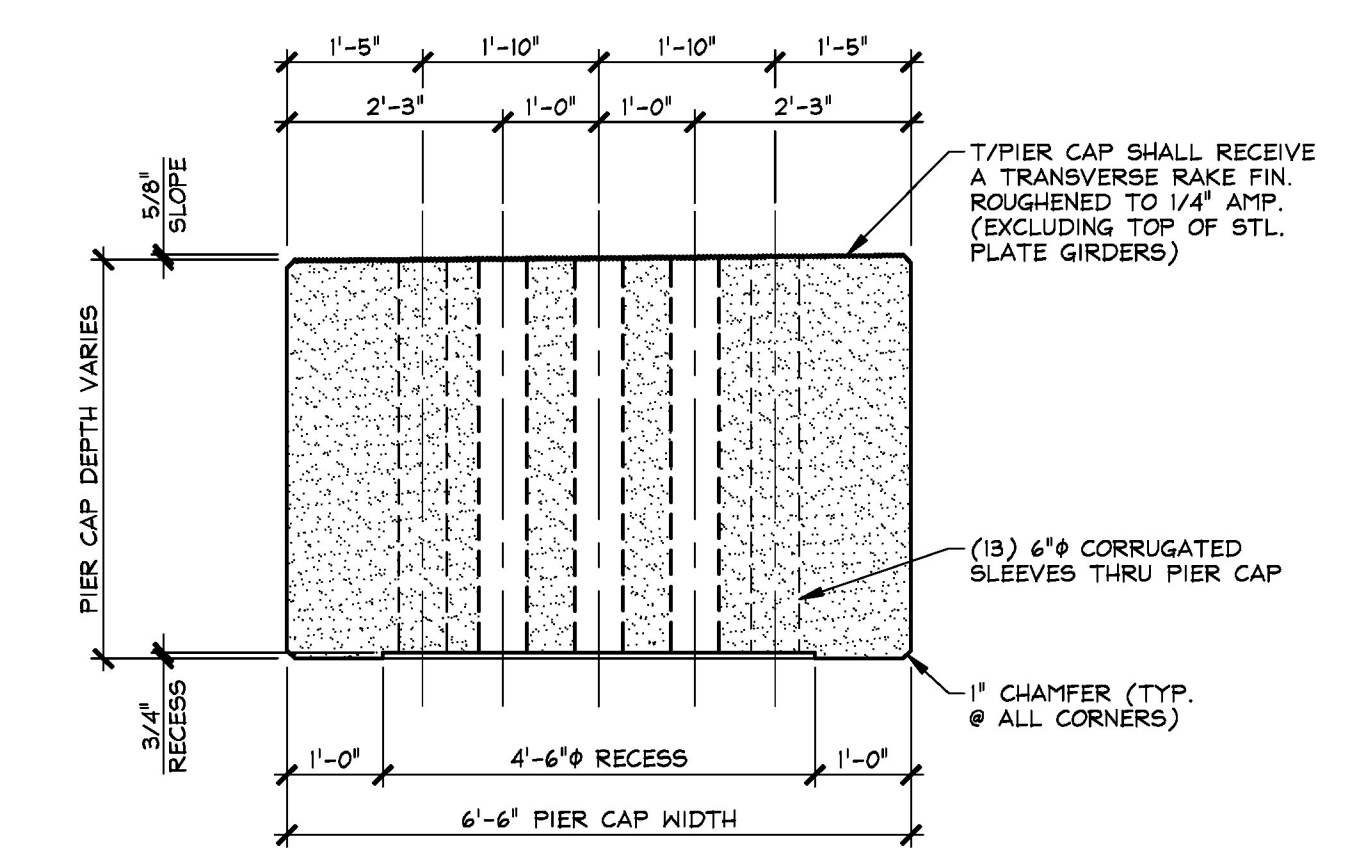


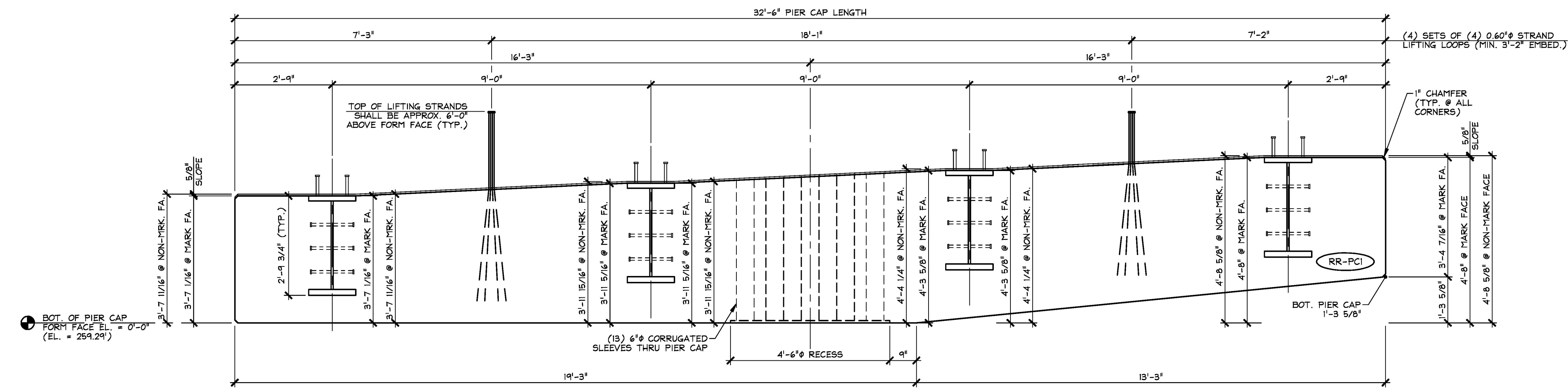
**1** PRECAST CONCRETE PIER CAP PLAN VIEW IN FORM  
 PCI  
 1/2" = 1'-0"



**A** PRECAST CONCRETE PIER CAP SECTION  
 PCI  
 1/2" = 1'-0"



**B** PRECAST CONCRETE PIER CAP SECTION  
 PCI  
 1/2" = 1'-0"



**2** PRECAST CONCRETE PIER CAP ELEVATION  
 PCI  
 1/2" = 1'-0"

**SHOP NOTE:**  
 SEE DRAWING NO. "PCI.1" FOR PIER CAP REINFORCING

**SHOP NOTE:**  
 Fc = 5,000 PSI  
 Fci = 3,500 PSI  
 MIX #445MSCC

MARK: RR-PCI		QTY.: 1	WT.: 67.96 T	VOL.: 30.39 cy
MATERIAL LIST / PIER CAP				
ITEM	MARK	DESCRIPTION	QTY.	
1				
2				
3				
4				
5				
6				
7		6" x 4'-2" CORRUGATED PLASTIC SLEEVE		13
8		SPLICE PLATE GIRDER SEGMENT (SUPPLIED BY OTHERS)		4
9		SET OF (4) 0.60" STRAND LIFTING LOOPS		4
10				

12-2-15 REVISED PER GENERAL CONTRACTOR'S ENGINEER REVIEW

APPROVAL STAMP:	<b>J.P. CARRARA &amp; SONS INC.</b> Precast & Prestress Manufacturer 2464 OSE STR. MIDDLEBURY, VERMONT 05753 Phone: (802)388-6361 Fax: (802)388-9010	<b>CCS CONSTRUCTORS, INC.</b> CONTRACTOR MORRISVILLE, VERMONT
	<b>STATE OF VERMONT AGENCY OF TRANSPORTATION</b> COUNTY OF ADDISON	DATE: OCT. 15, 2015 SCALE: NOTED
	<b>TOWN OF NEW HAVEN</b> T.H. 2 (RIVER ROAD) (CLASS 2 - MAJOR COLLECTOR) BRIDGE NO.: 10 PROJECT NO.: BRP 0183 (1)	CHKD: A.S. DFTM: B.L. JOB NO: 23475-015
	<b>PRECAST PIER CAP DIMENSIONAL DETAILS</b>	DWG. NO: <b>PCI</b>