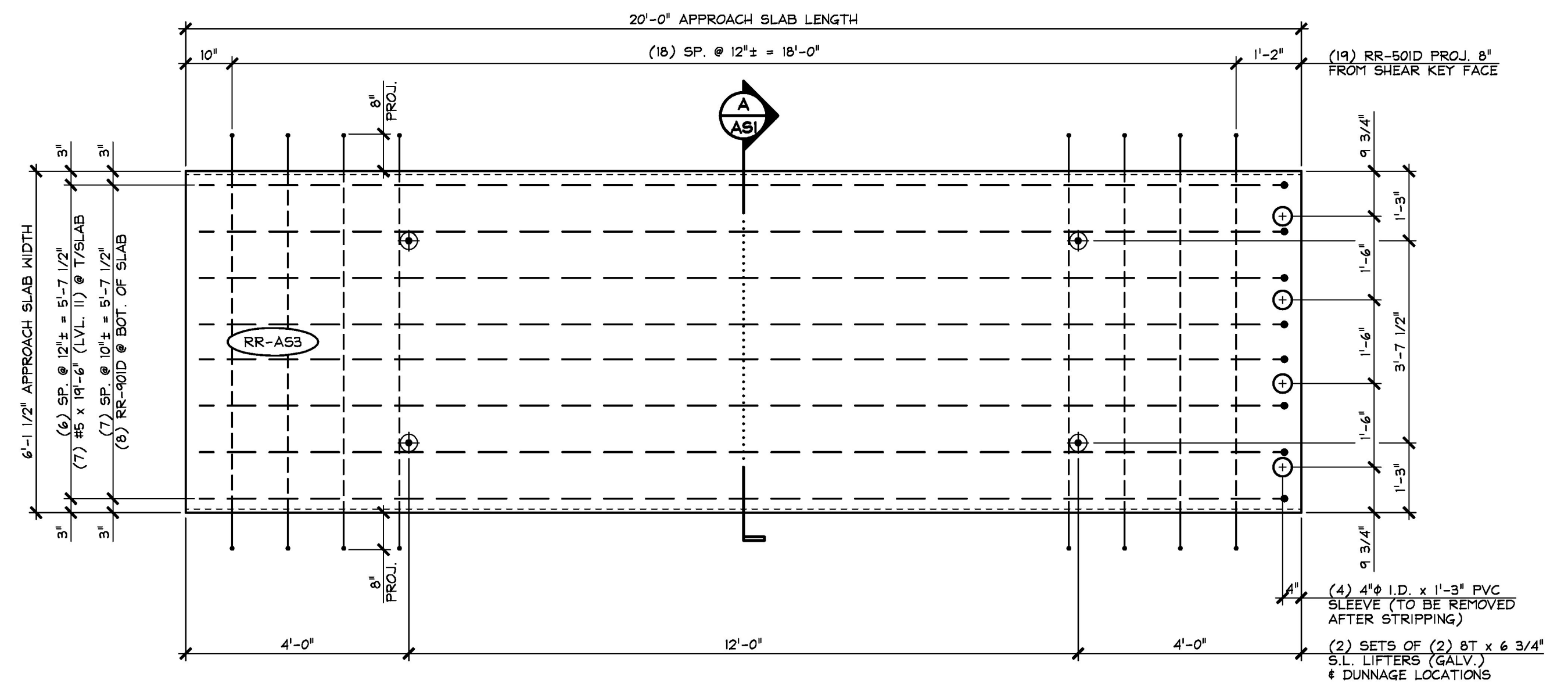
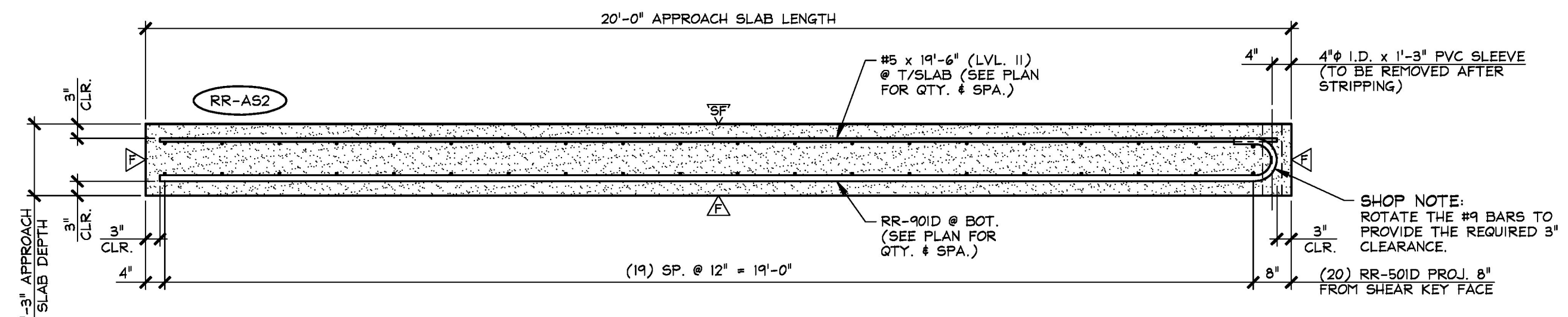


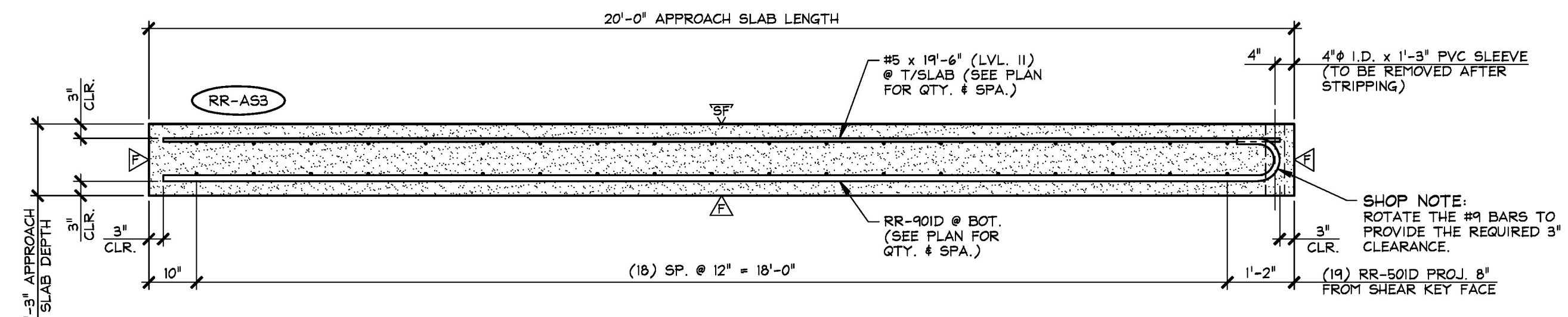
1 DIMENSIONAL PLAN VIEW IN FORM - "RR-AS2"
1/2" = 1'-0"



3 DIMENSIONAL PLAN VIEW IN FORM - "RR-AS3"
1/2" = 1'-0"



2 LONGITUDINAL SECTION - "RR-AS2"
1/2" = 1'-0"



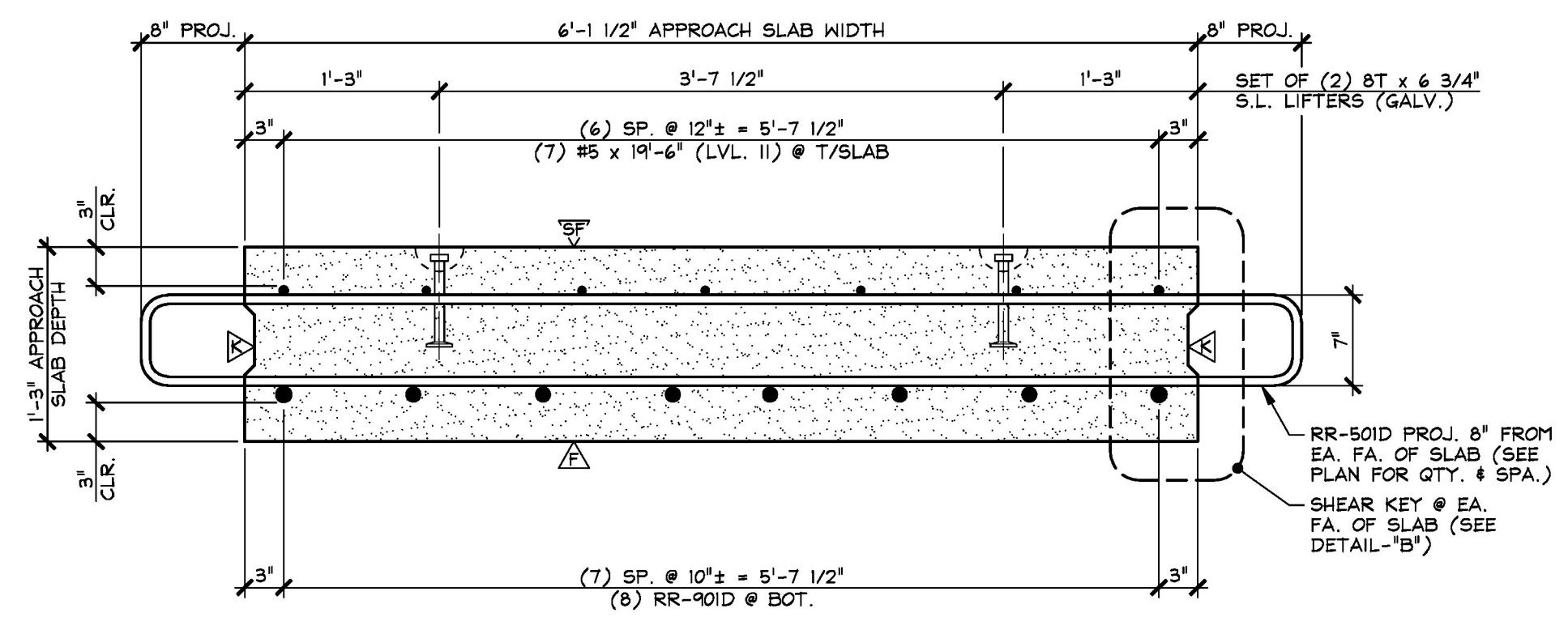
4 LONGITUDINAL SECTION - "RR-AS3"
1/2" = 1'-0"

△ DENOTES FORM FINISH
▽ DENOTES SMOOTH FLOAT FINISH
△ DENOTES ROUGHENED FINISH

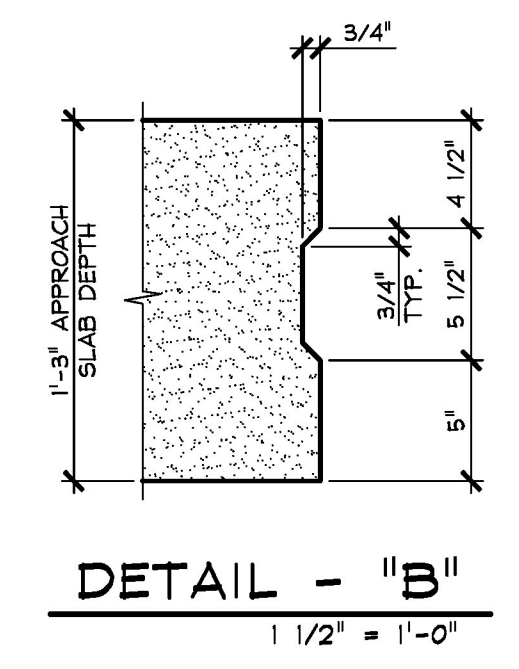
SHOP NOTE:
F_c = 5,000 PSI
F_t = 3,500 PSI
MIX #445M5CC

MARK: RR-AS2	QTY.: 2	WT.: 11.41 T	VOL.: 5.64 cy
MARK: RR-AS3	QTY.: 2	WT.: 11.41 T	VOL.: 5.64 cy

MATERIAL LIST / APPROACH SLAB				
ITEM	MARK	DESCRIPTION	QTY./SLAB	
			AS2	AS3
1	RR-50ID	#5 BENT BAR (LEVEL II, DUAL COATED)	20	19
2		#5 x 19'-6" (LEVEL II, DUAL COATED)	7	7
3				
4	RR-90ID	#9 BENT BAR (LEVEL II, DUAL COATED)	8	8
5				
6				
7				
8		4" I.D. x 1'-3" PVC SLEEVE	4	4
9		8T x 6 3/4" SWIFT LIFT LIFTER (GALV.)	4	4
10				



A LONGITUDINAL SECTION
1" = 1'-0"



DETAIL - "B"
1 1/2" = 1'-0"

APPROVAL STAMP:

J.P. CARRARA & SONS INC.
Precast & Prestress Manufacturer
2464 CASE STR., MIDDLEBURY, VERMONT 05753 Phone: (802)388-6361 Fax: (802)388-9010

CCS CONSTRUCTORS, INC.
CONTRACTOR
MORRISVILLE, VERMONT

STATE OF VERMONT AGENCY OF TRANSPORTATION
COUNTY OF ADDISON

TOWN OF NEW HAVEN
T.H. 2 (RIVER ROAD) (CLASS 2 - MAJOR COLLECTOR)
BRIDGE NO.: 10 PROJECT NO.: BRP 0183 (1)

DATE: OCT. 15, 2015
SCALE: NOTED
CHKD: A.S. DFTM: B.L.
JOB NO: 23475-015

PRECAST APPROACH SLAB DETAILS
DWG. NO: ASI