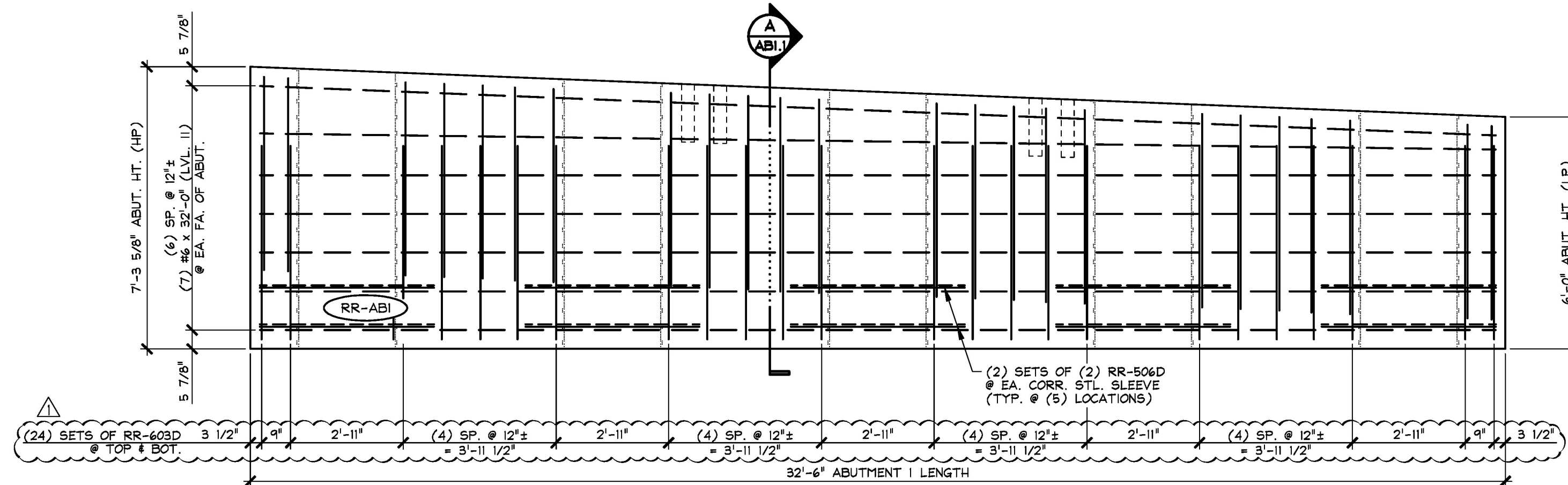
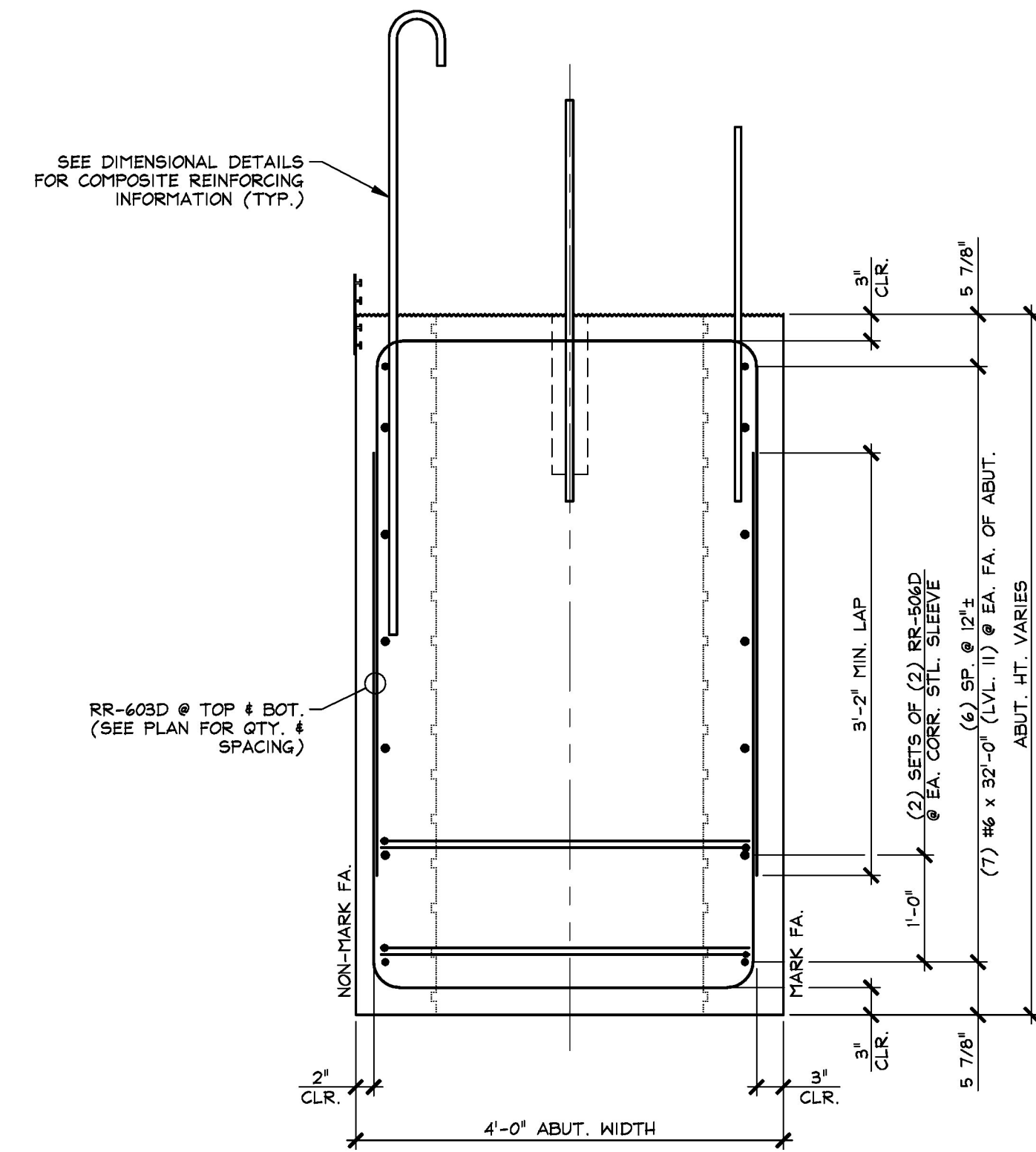


1 REINFORCING PLAN VIEW IN FORM
ABI.1 3/8" = 1'-0"



2 MARK FACE REINFORCING ELEVATION
ABI.1 3/8" = 1'-0"



A REINFORCING SECTION
ABI.1 3/4" = 1'-0"

12-2-15 REVISED PER GENERAL CONTRACTOR'S ENGINEER REVIEW

MARK: RR-ABI		QTY.: 1	
MATERIAL LIST / ABUTMENT			
ITEM	MARK	DESCRIPTION	QTY.
1	RR-506D	#5 BENT BAR (LEVEL II, DUAL COATED)	20
2			
3	RR-603D	#6 BENT BAR (LEVEL II, DUAL COATED)	48
4		#6 x 32'-0" (LEVEL II, DUAL COATED)	14
5			
6			
7			
8			
9			
10			

APPROVAL STAMP:	J.P. CARRARA & SONS INC. Precast & Prestress Manufacturer 2464 CASE STR., MIDDLEBURY, VERMONT 05753 Phone: (802)388-6361 Fax: (802)388-9010		CCS CONSTRUCTORS, INC. CONTRACTOR MORRISVILLE, VERMONT
	STATE OF VERMONT AGENCY OF TRANSPORTATION COUNTY OF ADDISON		DATE: OCT. 15, 2015 SCALE: NOTED
	TOWN OF NEW HAVEN T.H. 2 (RIVER ROAD) (CLASS 2 - MAJOR COLLECTOR) BRIDGE NO.: 10 PROJECT NO.: BRP 0183 (1)		CHKD: A.S. DFTM: B.L. JOB NO: 23475-015
	PRECAST ABUTMENT REINFORCING DETAILS		DWG. NO: ABI.1