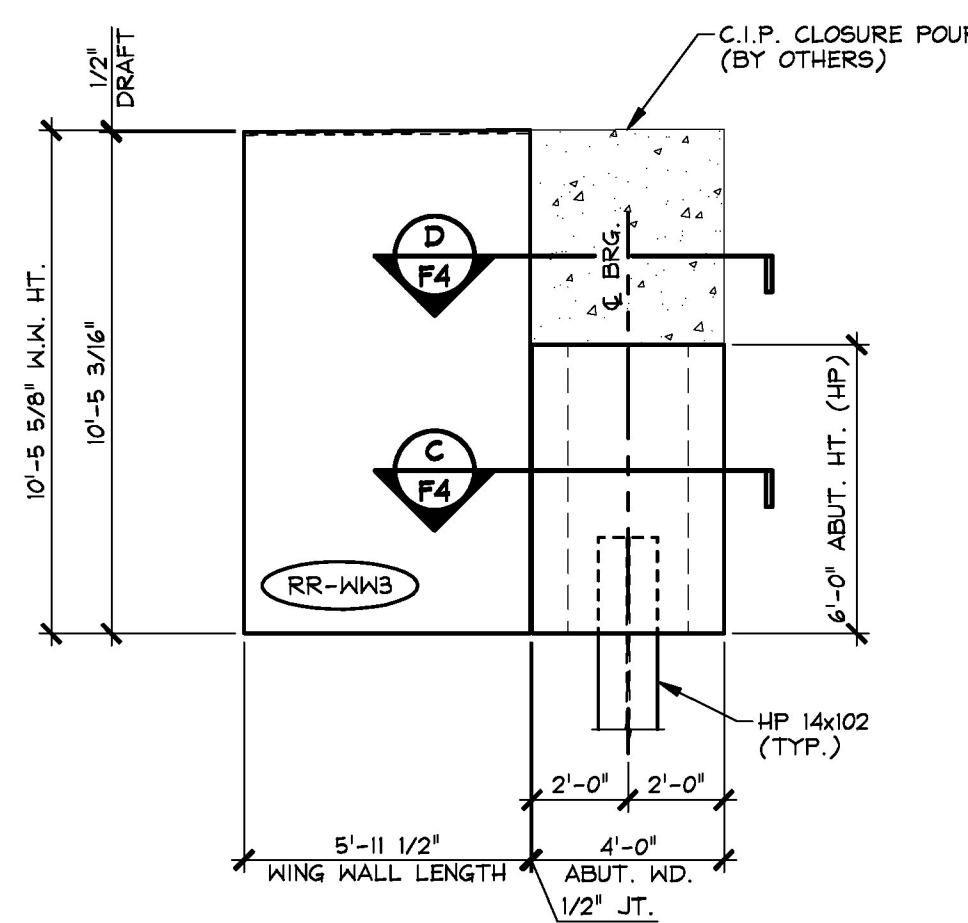
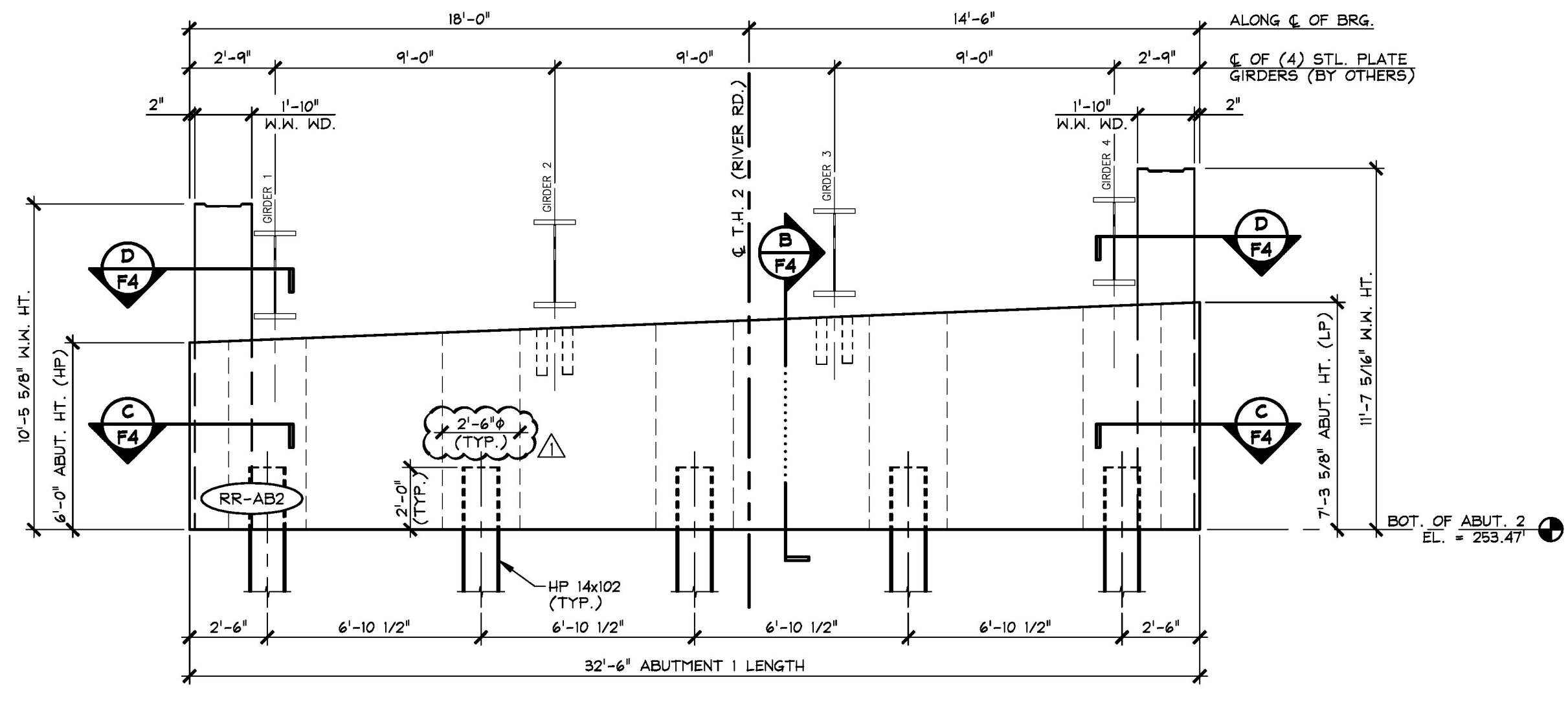


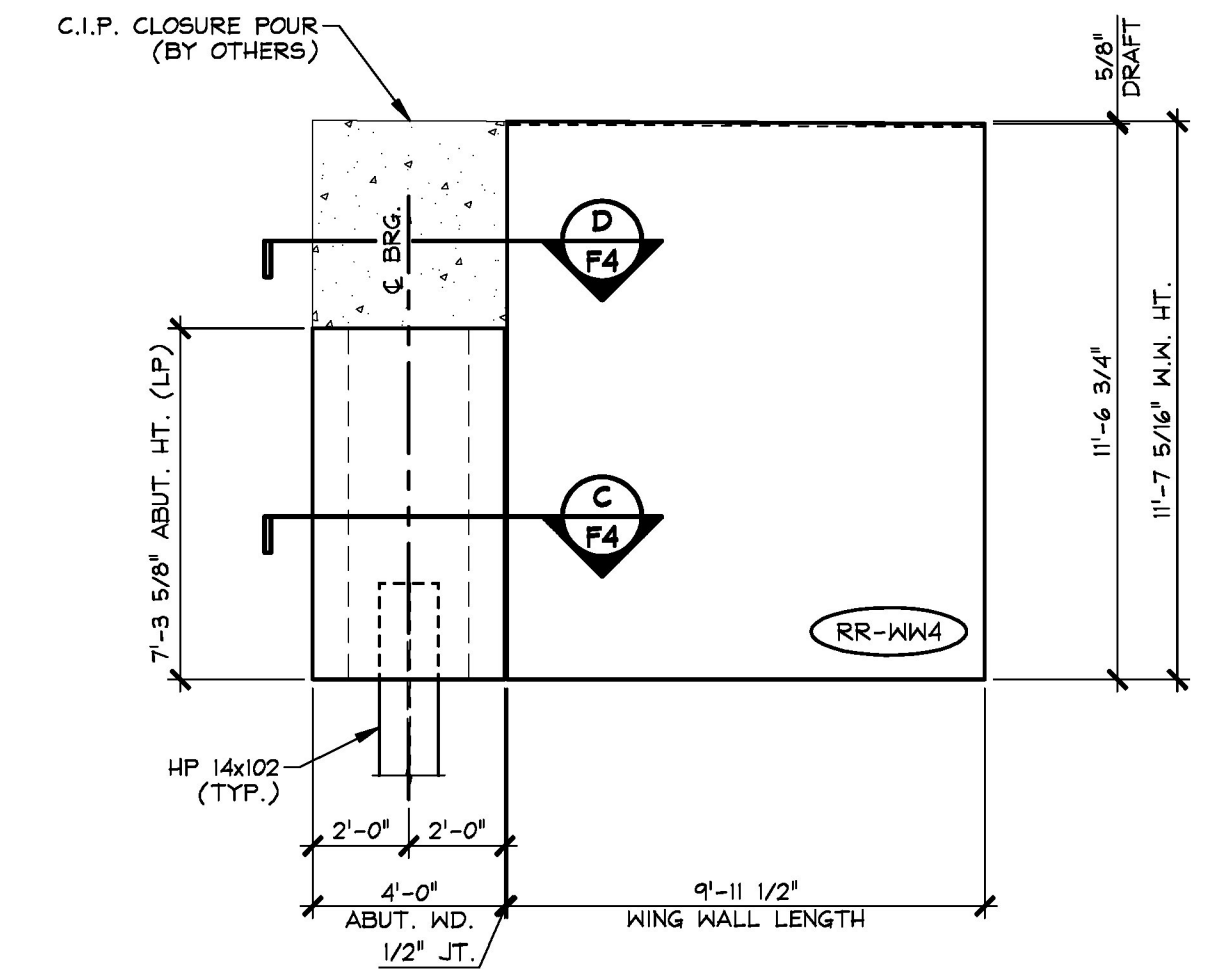
1 PRECAST ABUTMENT 2 & WING WALLS LAYOUT
 F3 1/4" = 1'-0"



2 WING WALL ELEVATION
 F3 "RR-WW3" 1/4" = 1'-0"



3 PRECAST ABUTMENT 2 ELEVATION
 F3 "RR-AB2" 1/4" = 1'-0"



4 WING WALL ELEVATION
 F3 "RR-WW4" 1/4" = 1'-0"

12-2-15 REVISED PER GENERAL CONTRACTOR'S ENGINEER REVIEW

APPROVAL STAMP:	J.P. CARRARA & SONS INC. Precast & Prestress Manufacturer 2464 CASE STR., MIDDLEBURY, VERMONT 05753 Phone: (802)388-6361 Fax: (802)388-9010	CCS CONSTRUCTORS, INC. CONTRACTOR MORRISVILLE, VERMONT
	STATE OF VERMONT AGENCY OF TRANSPORTATION COUNTY OF ADDISON	
	TOWN OF NEW HAVEN T.H. 2 (RIVER ROAD) (CLASS 2 - MAJOR COLLECTOR) BRIDGE NO.: 10 PROJECT NO.: BRP 0183 (1)	
	PRECAST ABUTMENT 2 & WING WALLS LAYOUT & ELEVATIONS	
	DATE: OCT. 15, 2015	
	SCALE: NOTED	
	CHKD: A.S. DFTM: B.L.	
	JOB NO: 23475-015	
	DWG. NO: F3	