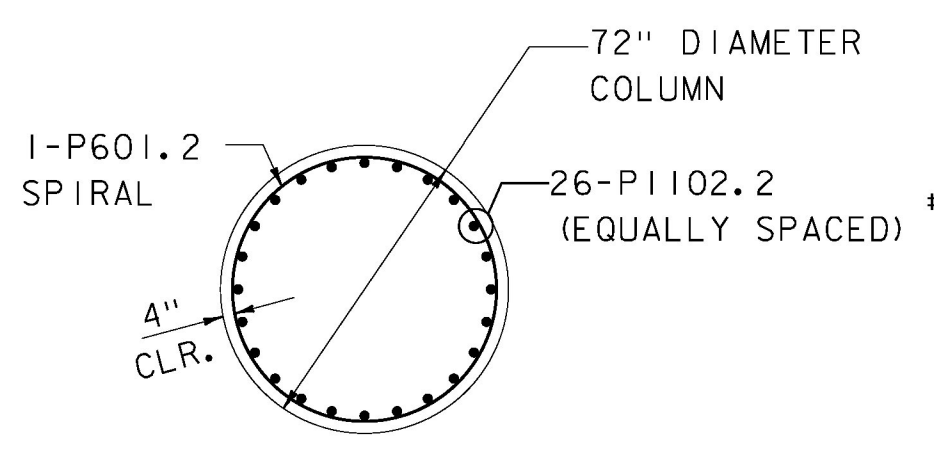
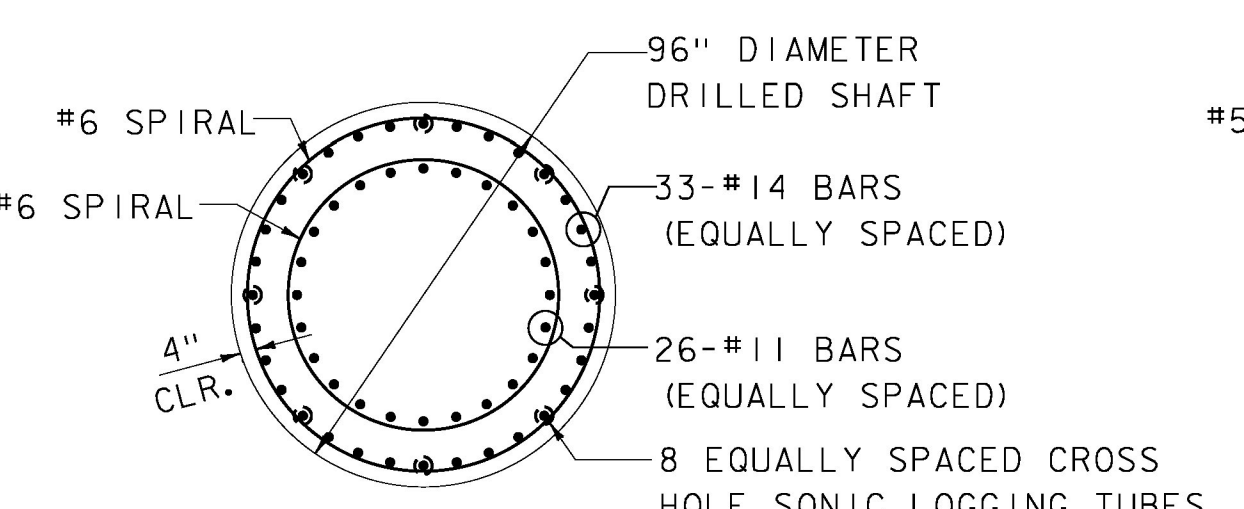


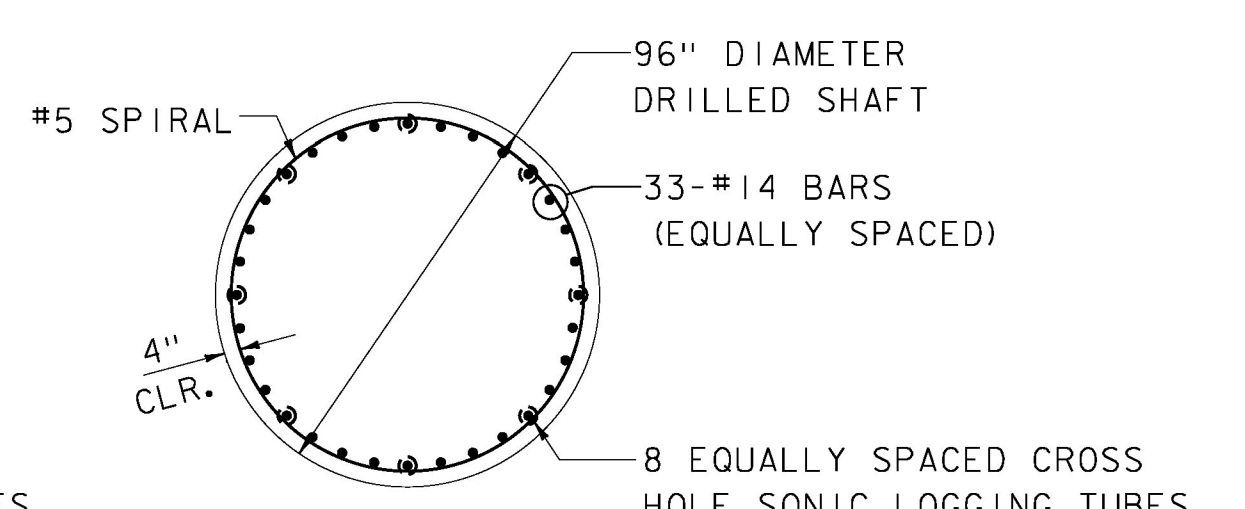
96" DIA. DRILLED SHAFT
SCALE: 1/2" = 1'-0"



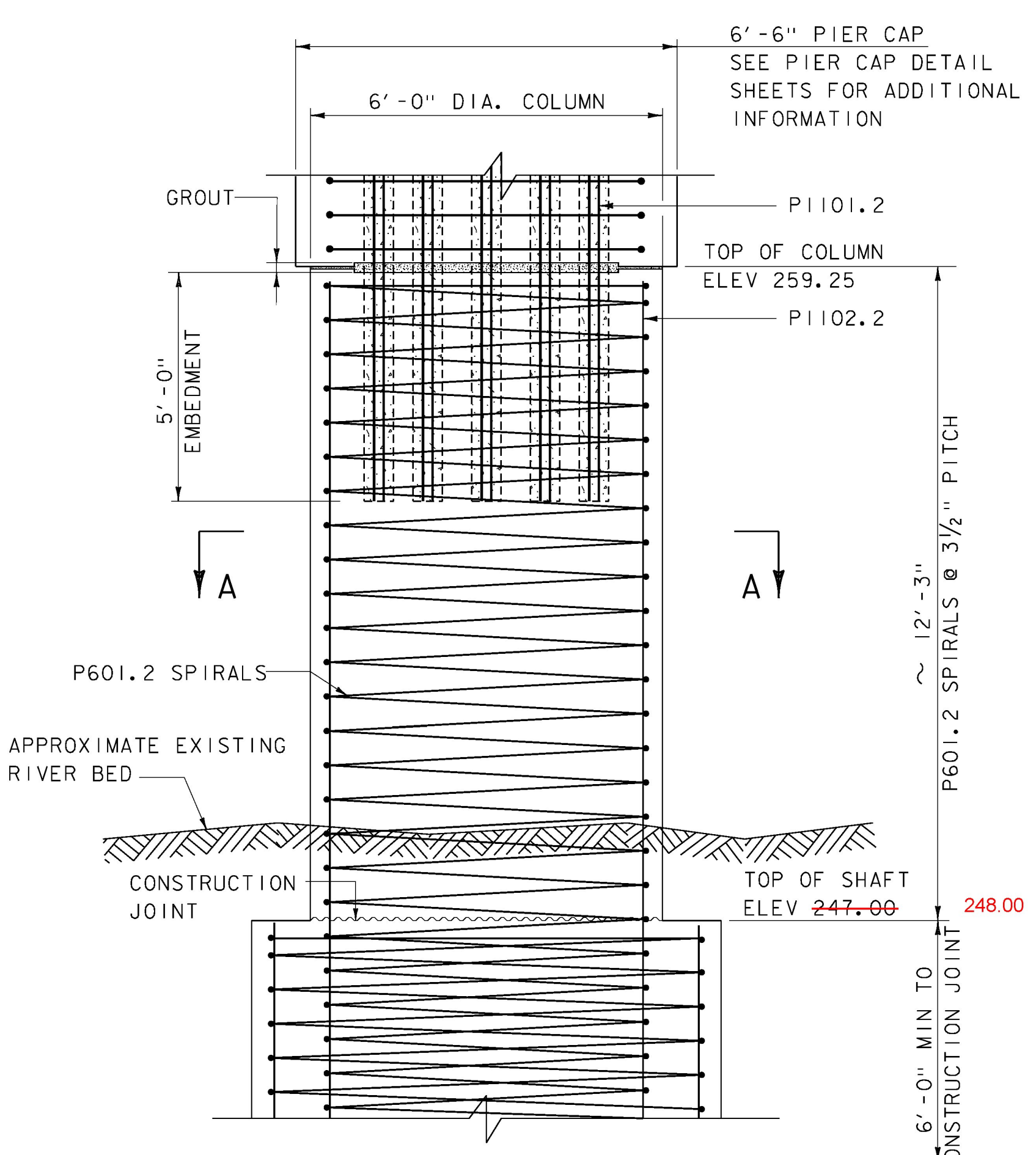
SECTION A-A
SCALE: 1/4" = 1'-0"



SECTION B-B
SCALE: 1/4" = 1'-0"



SECTION C-C
SCALE: 1/4" = 1'-0"



72" DIA. COLUMN
SCALE: 1/2" = 1'-0"

NOTE:
NF = NEAR FACE
FF = FAR FACE
EF = EACH FACE
= CUT TO FIT IN FIELD
3" CLEAR, UNLESS OTHERWISE SPECIFIED ON THE PLANS.

DRILLED SHAFT SCHEDULE			
PIER NUMBER	MIN REQUIRED STRENGTH LIMIT LOAD [KIPS]	TOP OF SHAFT ELEV ** [FT.]	MINIMUM REQUIRED SHAFT END ELEV *** [FT.]
PIER I	1500	247.00	130

- ** TOP OF SHAFT ELEVATION IS APPROXIMATE, CONTRACTOR SHALL FIELD VERIFY THAT THE TOP OF SHAFT ELEVATION SHOWN IS A MINIMUM OF 2'-0" BELOW THE EXISTING RIVER BED.
- *** THE TIP ELEVATION ABOVE IS BASED ON BORINGS PERFORMED BY VTRANS.
- ▲ ADJUST LENGTH OF SPIRALS AND PRIMARY REINFORCEMENT BASED ON FINAL TOP ELEVATION.

- NOTES:**
1. FOR LOCATION OF DRILLED SHAFT SEE SURVEY LAYOUT SHEET.
 2. LAP SPLICES SHALL NOT BE USED FOR BARS LARGER THAN #11 IN ACCORDANCE WITH VTRANS STRUCTURES DESIGN MANUAL SECTION 5.5.5. MECHANICAL SPLICES SHALL BE PROVIDED FOR BARS LARGER THAN #11.
 3. NO SPLICES OF PRIMARY SHAFT REINFORCEMENT SHALL OCCUR WITHIN 6'-0" OF THE TOP OF SHAFT. BELOW THIS DEPTH, ALTERNATING MECHANICAL SPLICES (AS REQUIRED) WITH A MIN. 8'-0" STAGGER SHALL BE PROVIDED TO ACHIEVE THE REQUIRED LENGTHS OF #14 BAR.
 4. COLUMN REINFORCING SHALL EXTEND A MINIMUM OF 6'-0" BELOW TOP OF SHAFT.
 5. CONSTRUCTION JOINT SHALL BE PREPARED IN ACCORDANCE WITH SPECIAL PROVISION (DRILLED SHAFT IN EARTH)
 6. CONNECTIONS OF SPIRAL REINFORCEMENT IN THE TOP 40'-0" SHALL BE CONSTRUCTED USING MECHANICAL COUPLERS. THIS WORK WILL BE INCLUDED IN ITEM 900.645 SPECIAL PROVISION - (DRILLED SHAFT IN EARTH)

PROJECT NAME: NEW HAVEN
PROJECT NUMBER: BRF 0183 (I)

PB PARSONS BRINCKERHOFF
650 ELM STREET
MANCHESTER, NH 03101

FILE NAME: z10j070sup3.dgn
PROJECT LEADER: G.K. DONINGTON
DESIGNED BY: J. KIM
DRILLED SHAFT AND COLUMN DETAILS

PLOT DATE: 23-JUNE-2015
DRAWN BY: W GERHOLD
CHECKED BY: B.HOLSAPPLE
SHEET 42 OF 67