

ENDS OF BEAMS SHALL BE FABRICATED TO BE VERTICAL IN ERECTED POSITION AFTER ALL DEAD LOADS HAVE BEEN PLACED

3/4" x 7 1/2" BEARING STIFFENER

SINGLE NUT W/ 5x5 1/2" PLATE WASHER NUT MAY BE TIGHTENED TO FACILITATE STEEL GIRDER ERECTION, BUT PRIOR TO CONCRETE PLACEMENT NUT SHALL BE BACKED OFF 1/8"

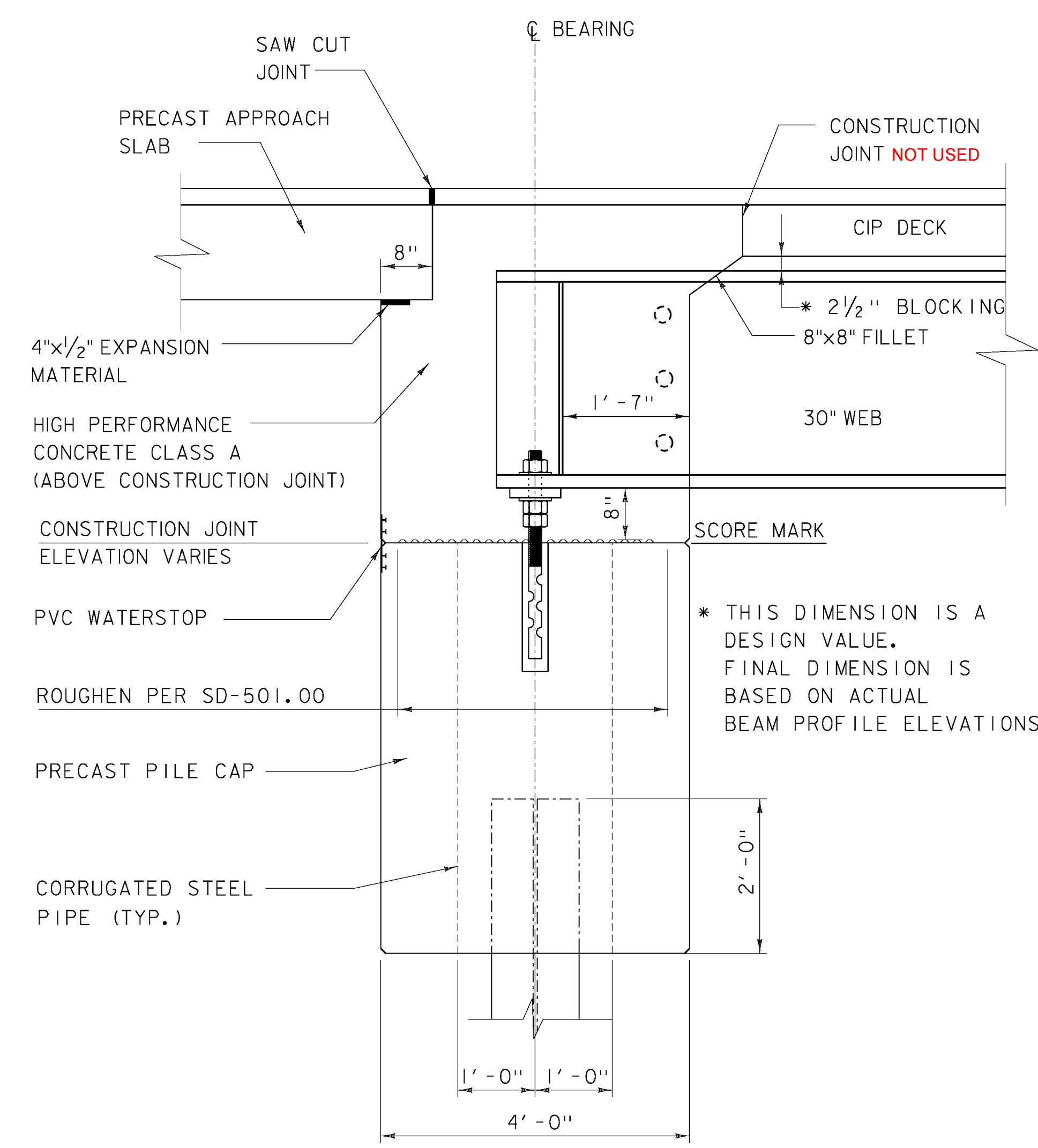
1 1/2" SOLE PLATE

1/2" PLATE WASHER

DOUBLE NUT W/ 5x5 1/2" PLATE WASHER ELEVATION AT TOP OF SOLE PLATE TO BE SET TO THEORETICAL BRIDGE SEAT ELEVATIONS

36"x2 1/2" DIA. ASTM A449, TYPE I OR HIGHER STRENGTH ANCHOR BOLT THREADED AS REQUIRED AND SWEDGED FOR 18" MINIMUM EMBEDMENT, DOUBLE NUT

**ELEVATION
END OF STEEL BEAM
AT ABUTMENTS**
SCALE: 1 1/2" = 1'-0"



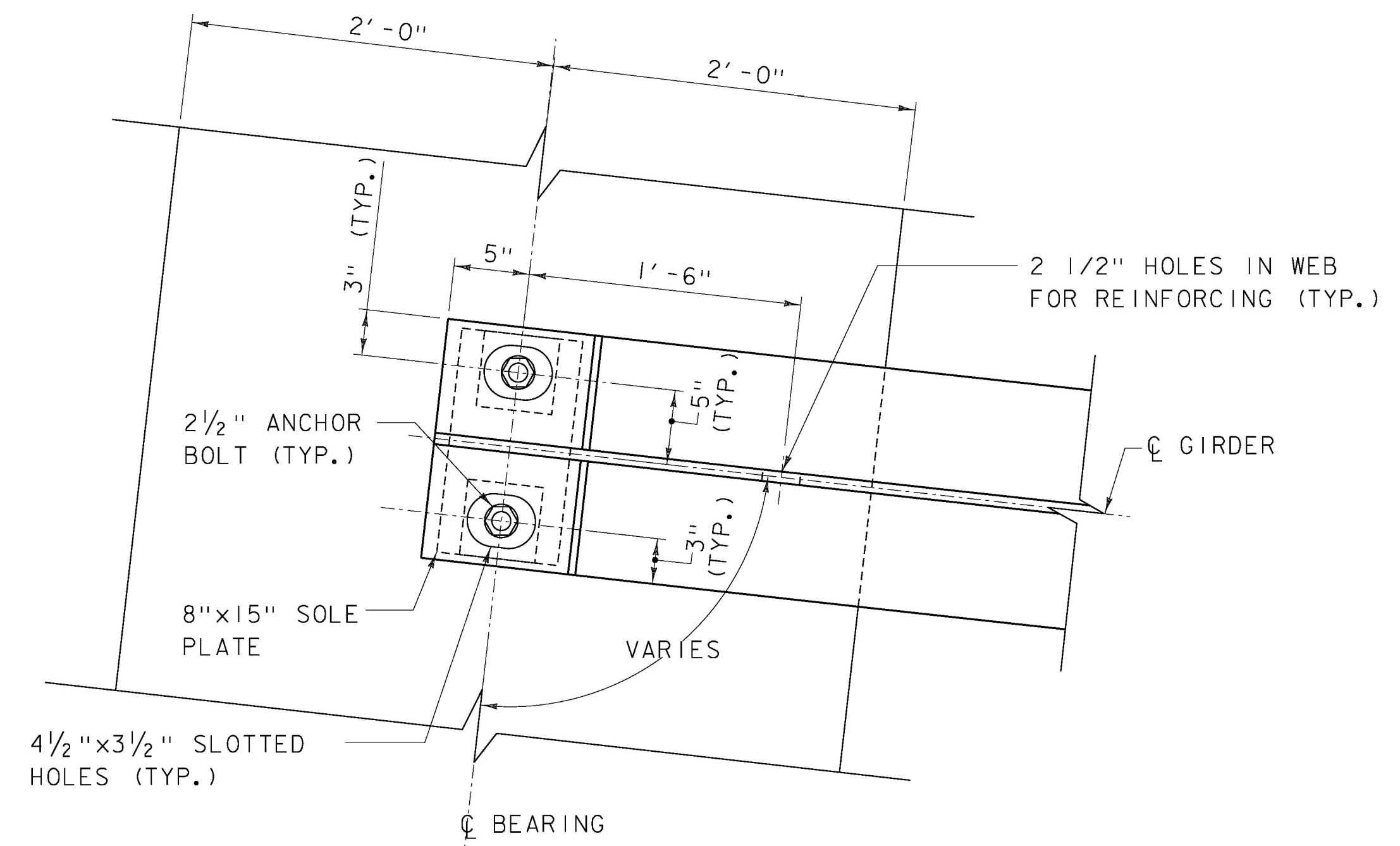
NOTES:

1. ANCHORAGE ASSEMBLY (SOLE PLATES, ANCHOR BOLTS, WASHERS AND NUTS) WILL BE PAID UNDER ITEM 506.56, "STRUCTURAL STEEL, CURVED PLATE GIRDER".
2. ANCHOR BOLTS SHALL BE 2 1/2" DIAMETER, TYPE I BOLTS MEETING ASTM A449. NUTS SHALL MEET AASHTO M291. THE CONTRACTOR SHALL ENSURE THAT THE ANCHOR BOLTS ARE INSTALLED IN A PLUMB POSITION. ONE EXTRA ANCHOR BOLT SHALL BE SUPPLIED FOR TESTING PURPOSES.
3. ALL STEEL IN ANCHORAGE ASSEMBLY SHALL BE AASHTO M270M/M270 GRADE 36 UNLESS OTHERWISE NOTED.
4. SUBSTITUTIONS FOR ANCHORAGE ASSEMBLY COMPONENT MATERIALS AND SIZES SHALL BE DETAILED ON THE FABRICATION DRAWINGS. ALL SUBSTITUTIONS SHALL BE APPROVED BY THE PROJECT MANAGER PRIOR TO FABRICATION AS PER SUBSECTION 506.04.
5. PROVIDE CORRUGATED SLEEVES IN PRECAST UNITS FOR INTERIOR GIRDERS. EXTERIOR GIRDER ANCHORS TO BE PLACED WHEN FILLING PILE TUBES.
6. CONTRACTOR TO ENSURE STABILITY OF GIRDERS DURING ALL PHASES OF CONSTRUCTION.

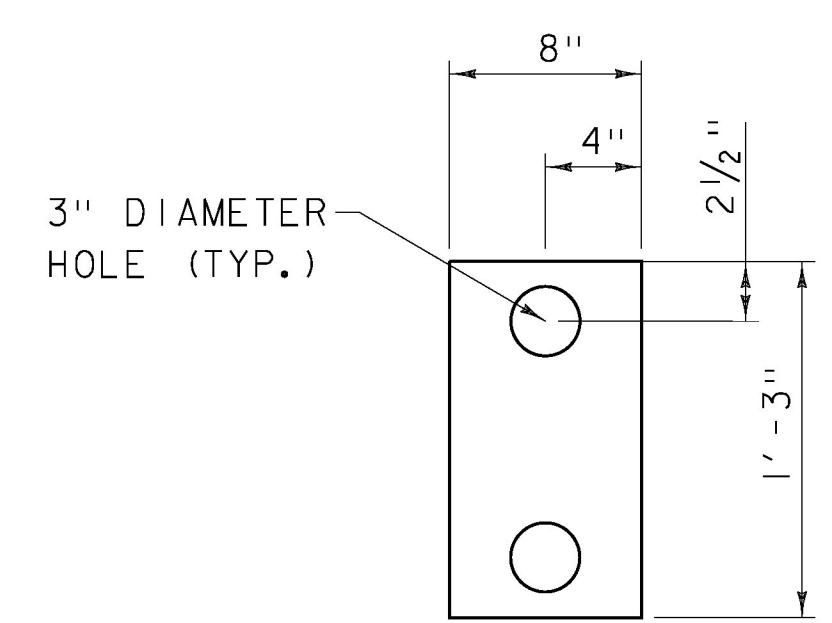
THEORETICAL GIRDER	TOP OF SOLE PLATE ELEVATIONS	
	ABUTMENT 1	ABUTMENT 2
1	258.86	260.25
2	259.22	260.61
3	259.58	260.97
4	259.94	261.33

* GREASE TOP OF SOLE PLATE BEFORE GIRDER PLACEMENT PAYMENT INCIDENTAL TO CONTRACT ITEM 506.56

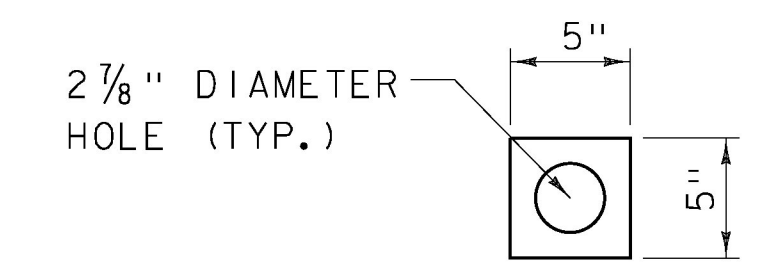
**BRIDGE END DETAIL AND
ABUTMENT TYPICAL SECTION**
SCALE: 3/4" = 1'-0"



**PLAN - END OF STEEL GIRDER
AT ABUTMENT 1**
SCALE: 1 1/2" = 1'-0"



**1 1/2" SOLE PLATE
DETAIL**
SCALE: 1 1/2" = 1'-0"



**1 1/2" PLATE WASHER
DETAIL**
SCALE: 1 1/2" = 1'-0"