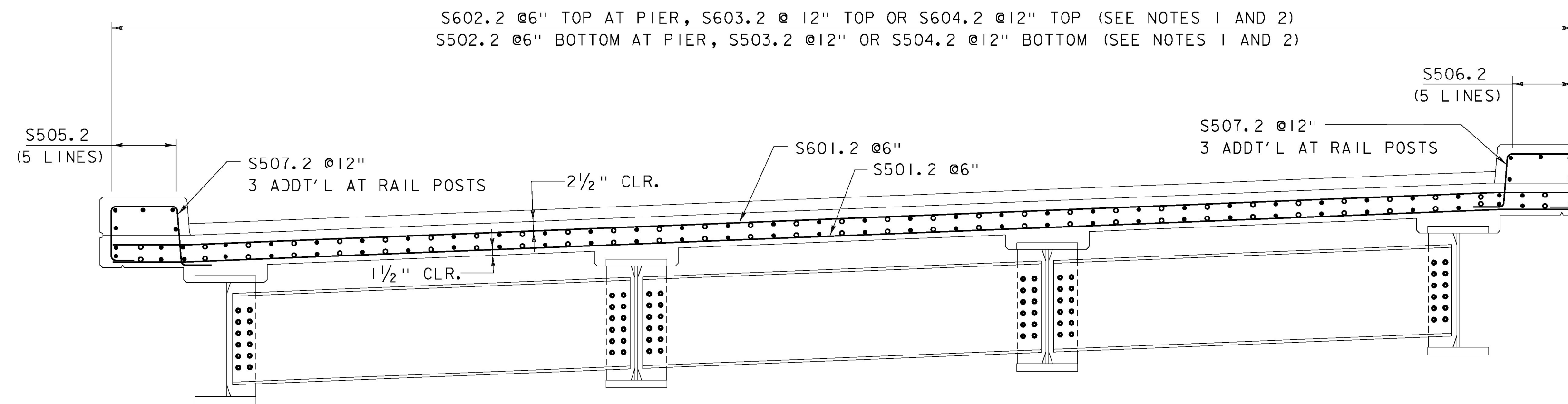


**DECK REINFORCING PLAN**

SCALE: 1/8" = 1'-0"

**NOTES:**

1. ALTERNATE 503.2 AND 504.2/603.2 AND 604.2 LONGITUDINAL TOP AND BOTTOM DECK BARS SO THAT LAP SPLICES ARE IN ALTERNATE LOCATIONS FOR EVERY OTHER ADJACENT BAR.
2. FOR #5 AND #6 LONGITUDINAL TOP AND BOTTOM DECK AND CURB BARS WHERE ACTUAL LAP LENGTHS ARE GREATER THAN THE MINIMUM SPECIFIED, SET ALL LAPS IN A SINGLE LONGITUDINAL LINE TO APPROXIMATELY EQUAL LENGTHS.
3. ALL TRANSVERSE BARS SHALL BE ORIENTED RADIALLY.
4. 3" CLEAR, UNLESS OTHERWISE SPECIFIED ON THE PLANS.



**DECK REINFORCING CROSS SECTION**

SCALE: 1/2" = 1'-0"

PROJECT NAME: NEW HAVEN  
PROJECT NUMBER: BRF 0183 (I)

FILE NAME: z10j070sup4.dgn  
PROJECT LEADER: G.K.DONINGTON  
DESIGNED BY: R.GAUDREAU  
DECK REINFORCING PLAN

PLOT DATE: 23-JUNE-2015  
DRAWN BY: W GERHOLD  
CHECKED BY: B.HOLSAPPLE  
SHEET 31 OF 67

