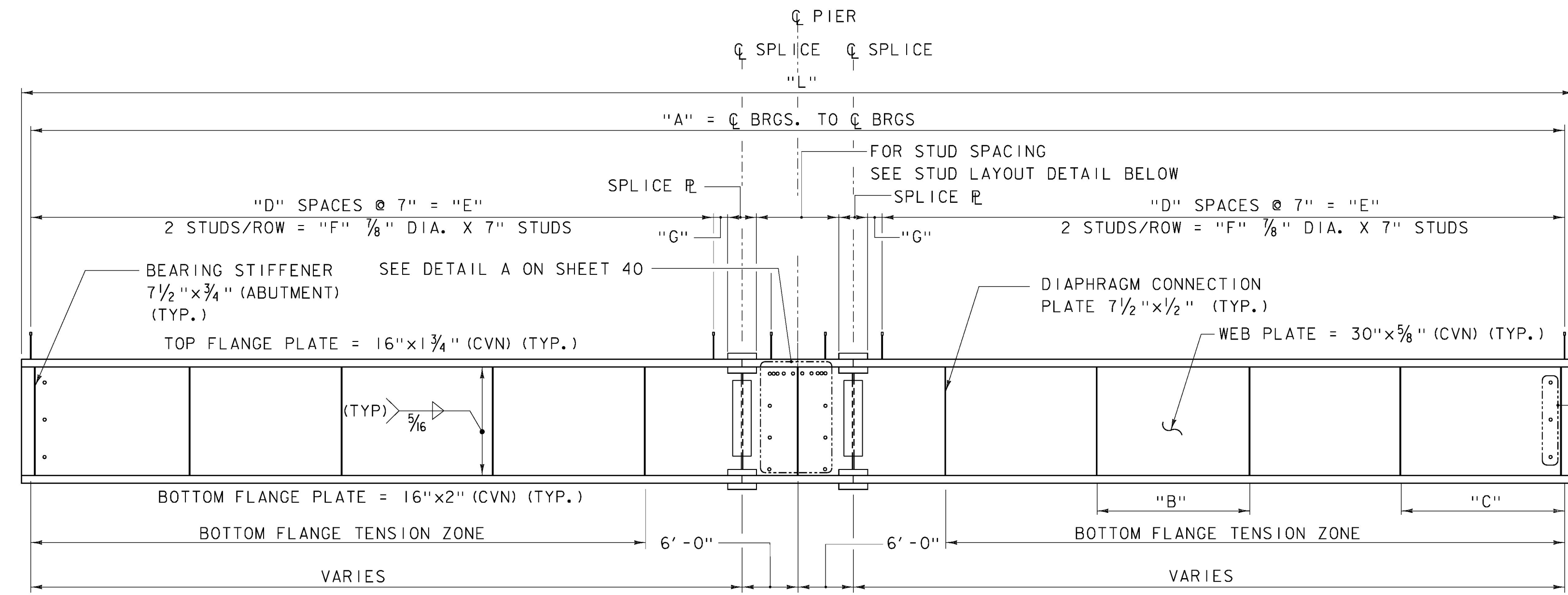
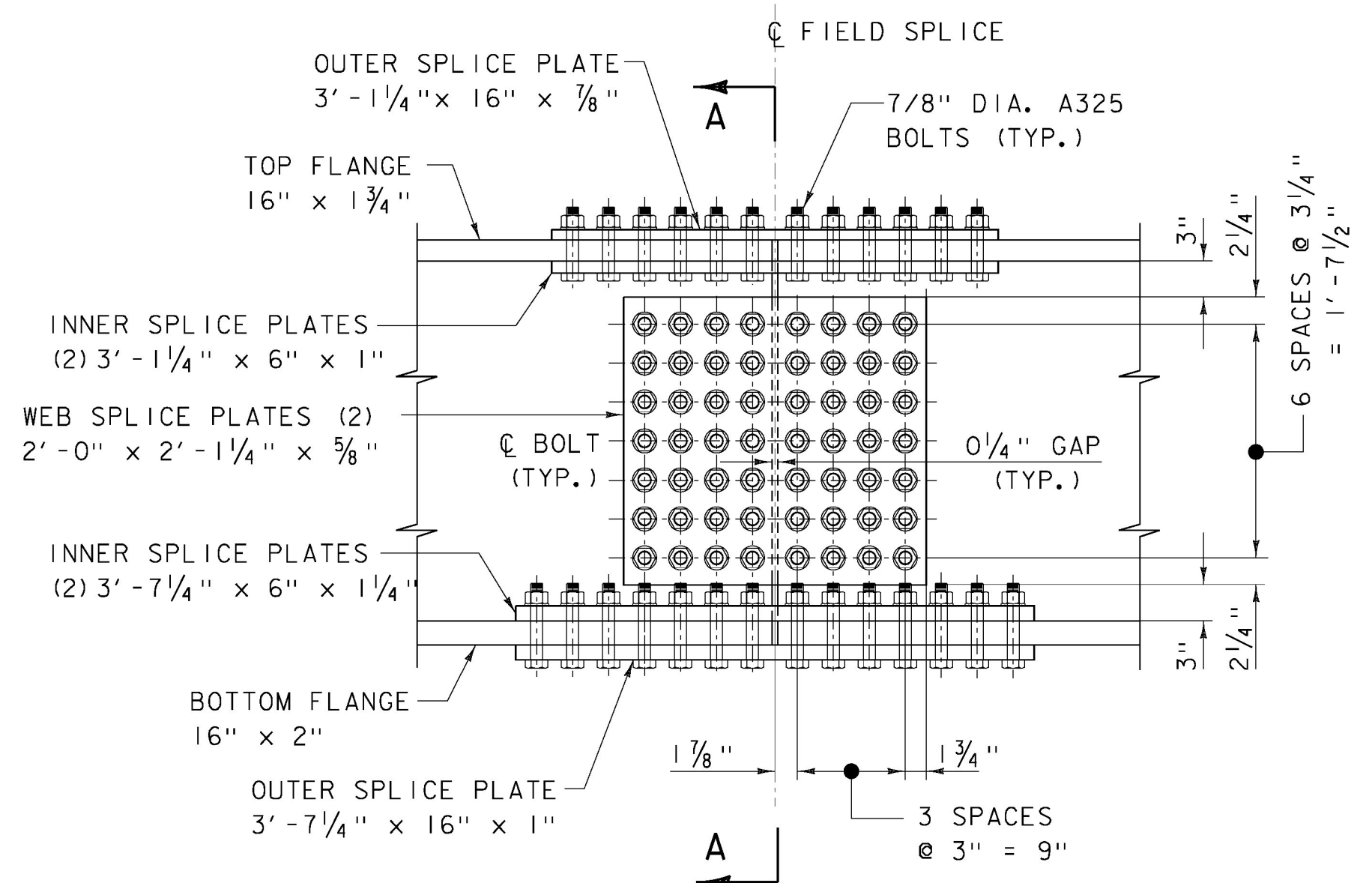


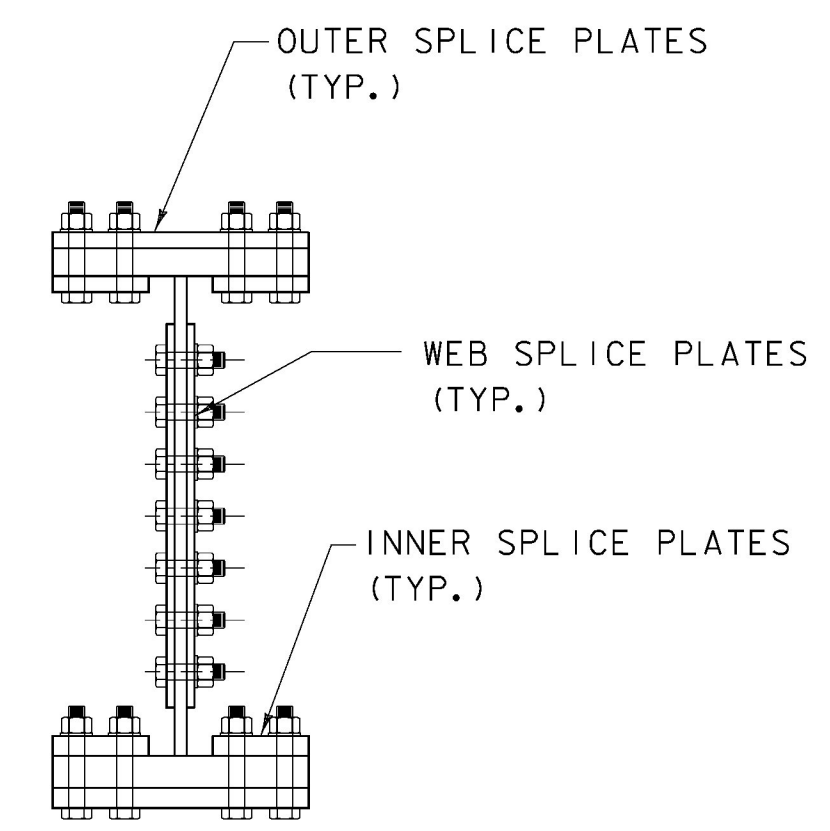
**PLAN - FIELD SPLICE
TOP FLANGE**
SCALE: 1" = 1'-0"



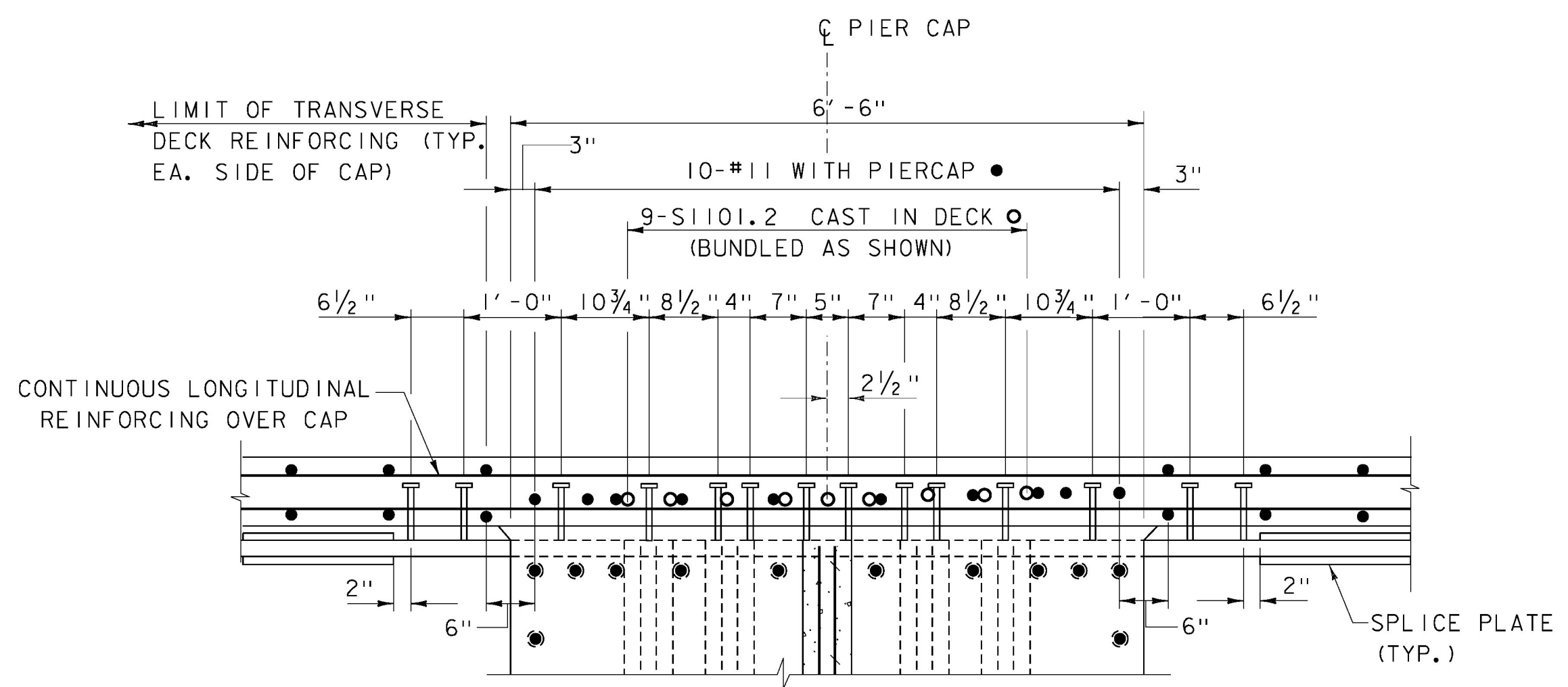
TYPICAL GIRDER ELEVATION
SCALE: 1" = 10' HORIZ. 1" = 2' VERT.



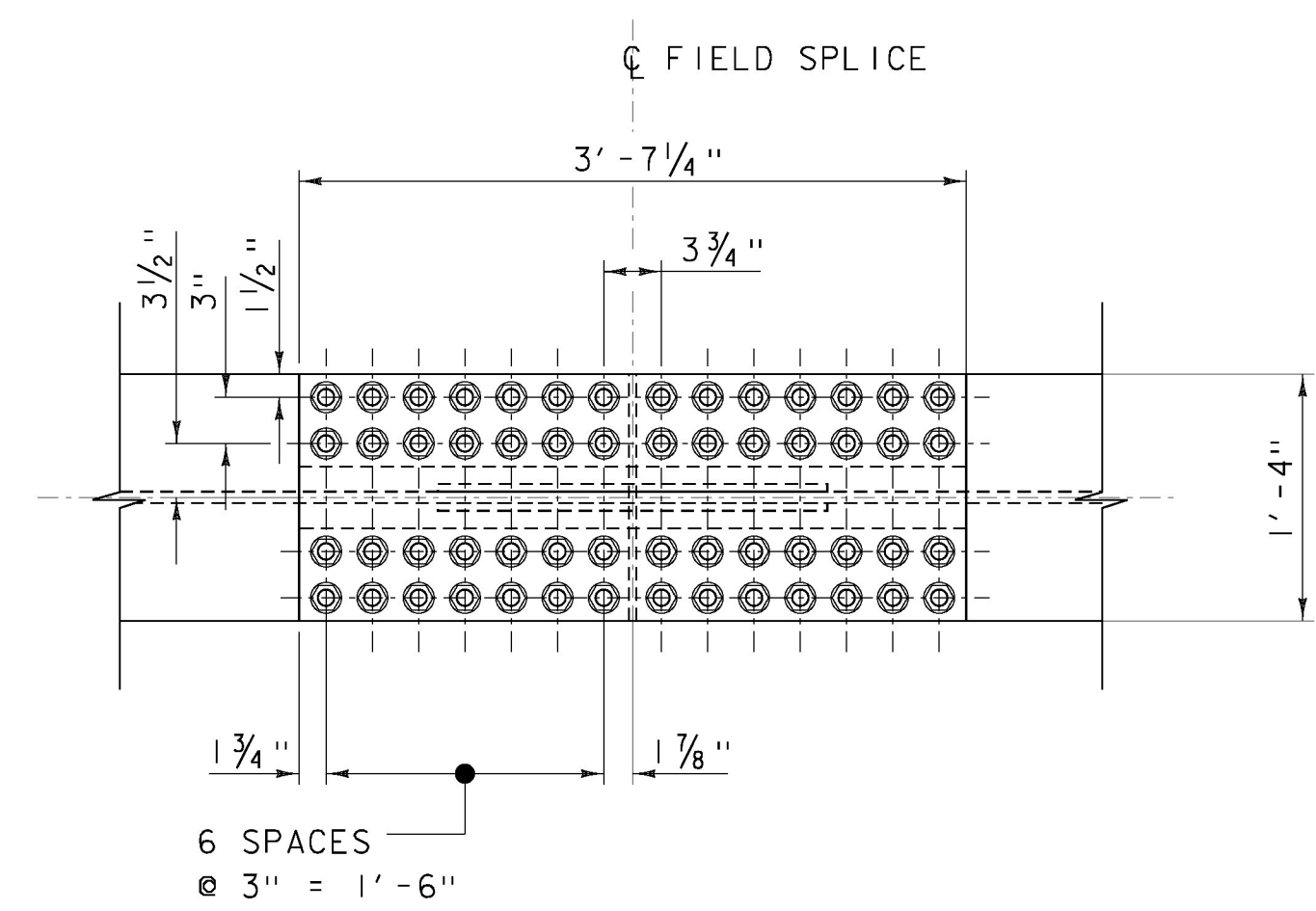
ELEVATION - FIELD SPLICE
SCALE: 1" = 1'-0"



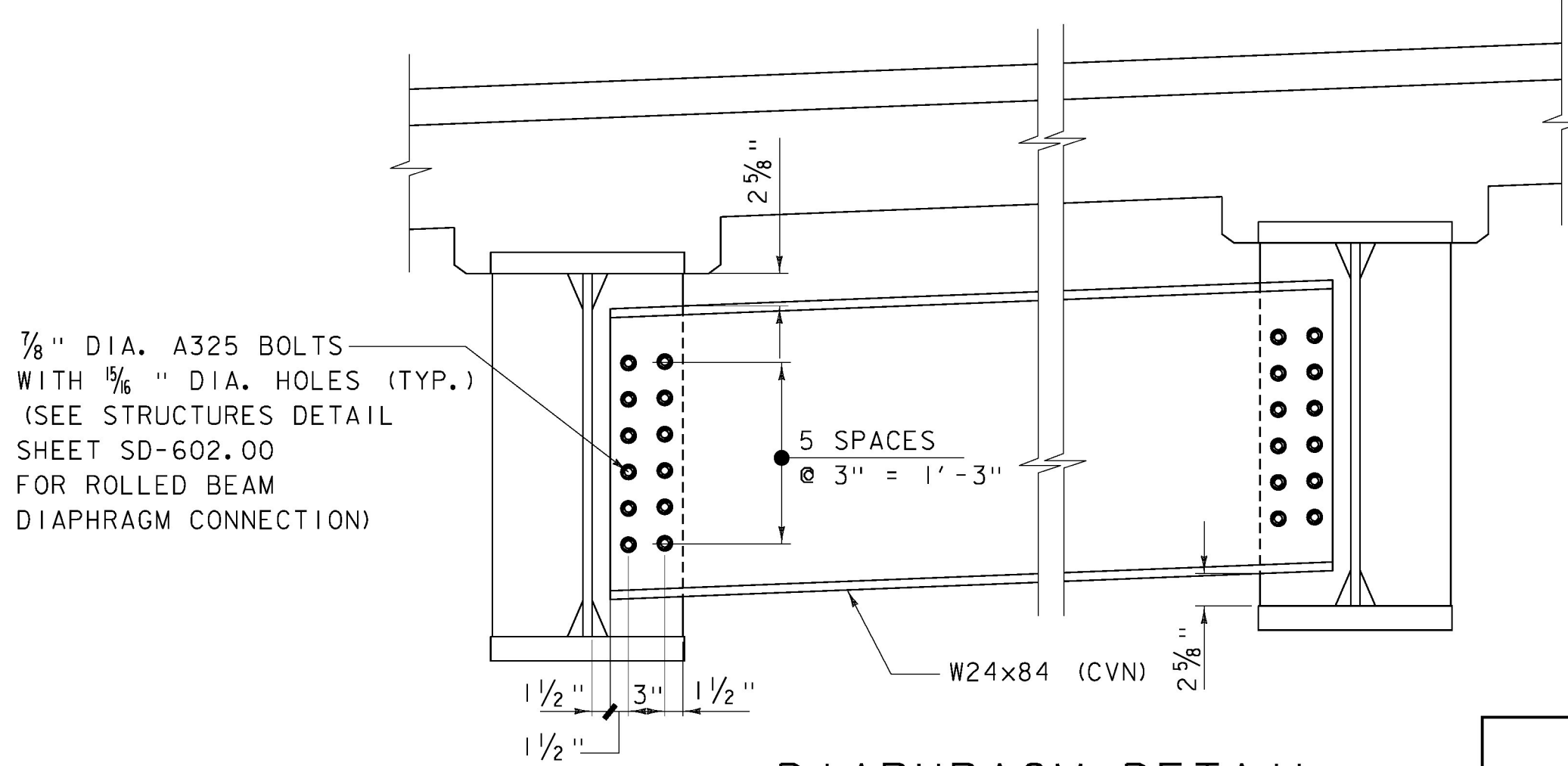
SECTION A-A
SCALE: 1" = 1'-0"



STUD LAYOUT DETAIL
SCALE: 3/4" = 1'-0"



**PLAN - FIELD SPLICE
BOTTOM FLANGE**
SCALE: 1" = 1'-0"



DIAPHRAGM DETAIL
SCALE: 1" = 1'-0"

GIRDER #	"L"	(3) RADIUS	"A"	"B"	"C"	(4) "D" (UNITLESS)	"E"	"F" (UNITLESS)	"G" (INCHES)
1	161.75	714.75	160.92	16.092	15.675	124	72.33	250	6 7/8
2	163.78	723.75	162.94	16.294	15.878	126	73.50	254	5
3	165.80	732.75	164.97	16.497	16.080	128	74.67	258	3 3/8
4	167.83	741.75	167.00	16.699	16.283	130	75.83	262	1 3/8

- (1) ALL UNITS IN FEET UNLESS NOTED OTHERWISE
- (2) DIMENSIONS MEASURED ALONG C OF GIRDER WEBS
- (3) MEASURED TO C OF GIRDER WEBS
- (4) TO C BEARING STIFFENER

PROJECT NAME: NEW HAVEN
PROJECT NUMBER: BRF 0183 (I)



FILE NAME: z10j070sup5.dgn
PROJECT LEADER: G.K.DONINGTON
DESIGNED BY: B. HOLSAPPLE
GIRDER DETAILS

PLOT DATE: 23-JUNE-2015
DRAWN BY: W GERHOLD
CHECKED BY: R.GAUDREAU
SHEET 29 OF 67