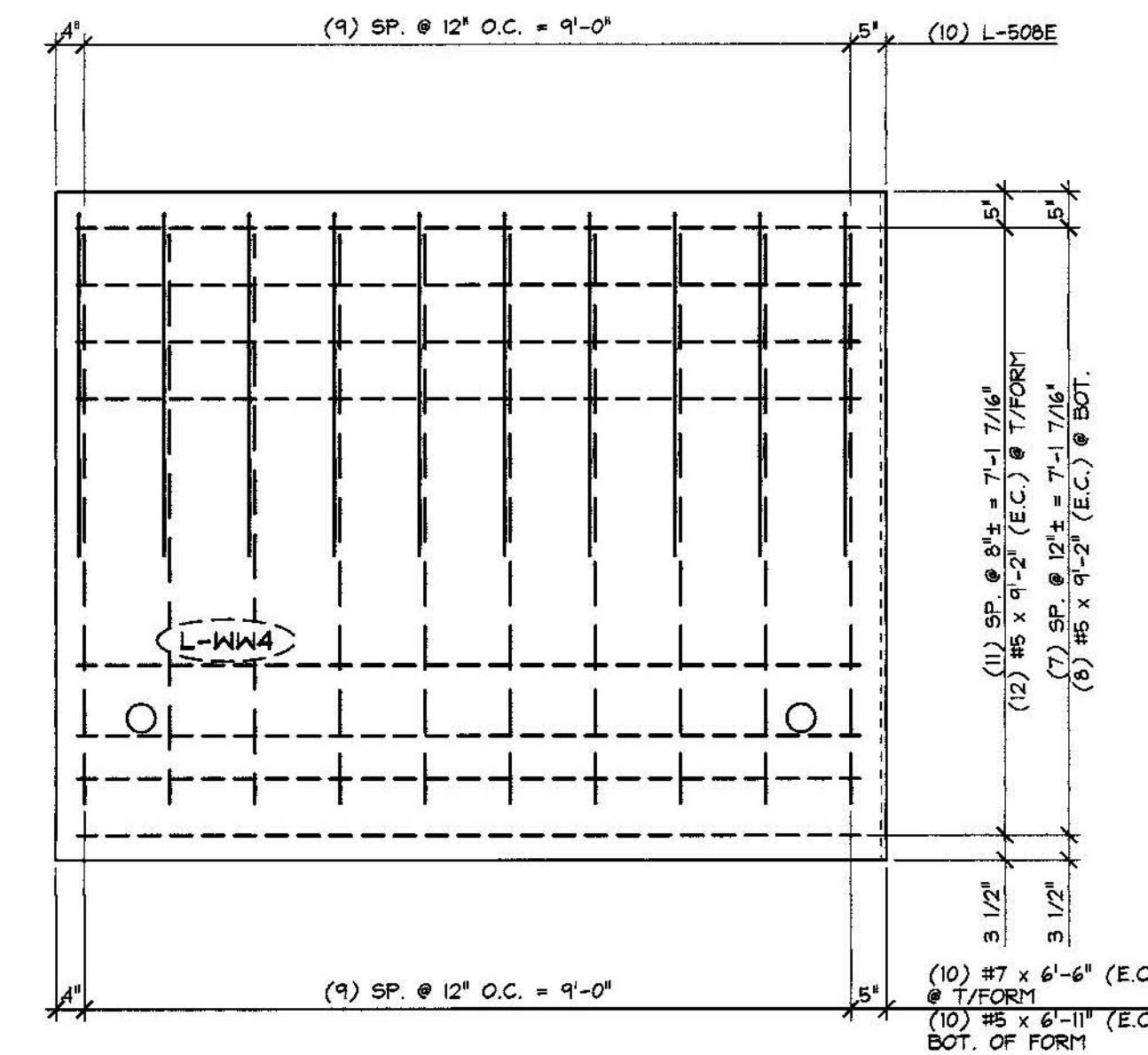
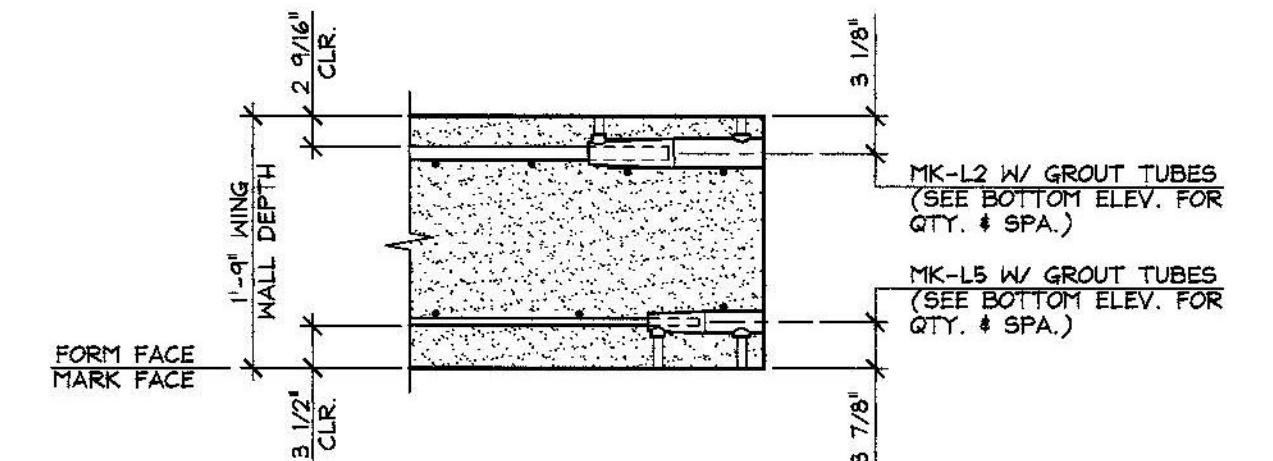


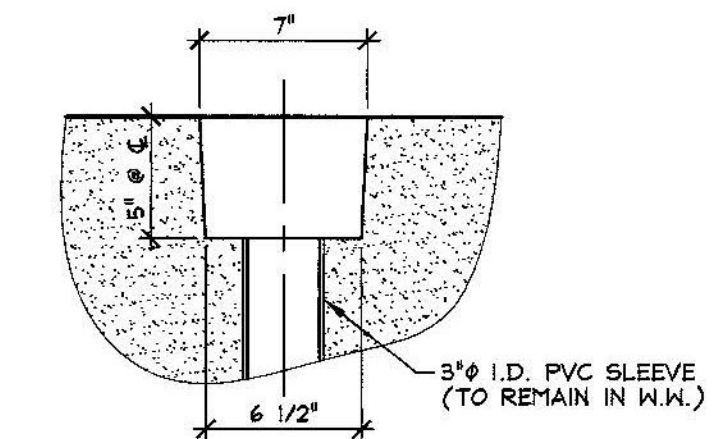
DIMENSIONAL PLAN VIEW IN FORM
 1/2" = 1'-0"



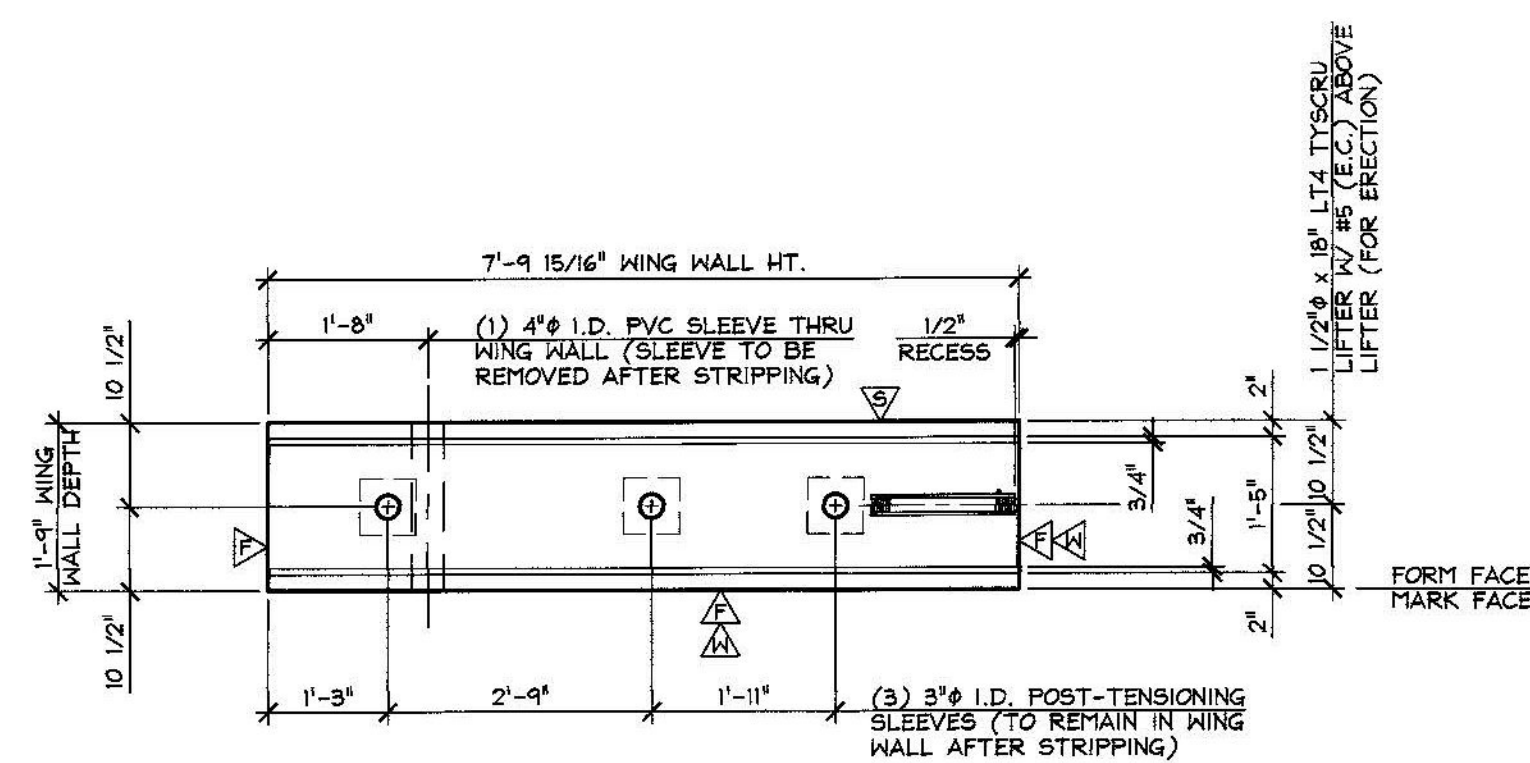
REINFORCING PLAN VIEW IN FORM
 1/2" = 1'-0"



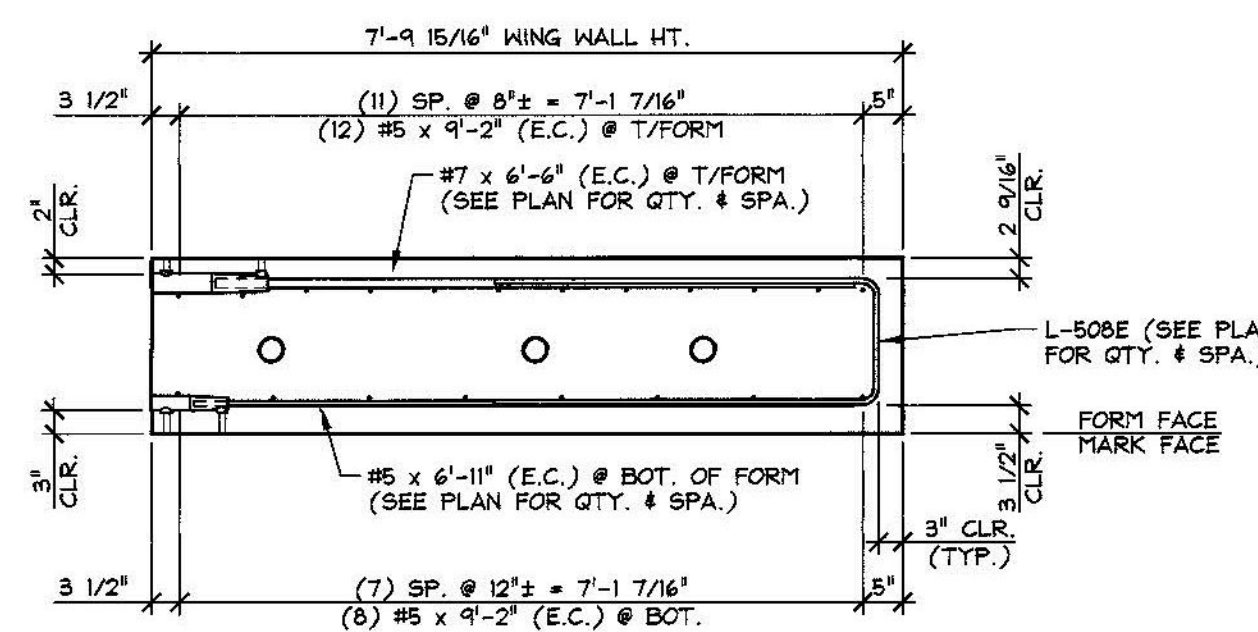
A SPLICE SLEEVE DETAIL
 3/4" = 1'-0"



B P.T. POCKET DETAIL
 1 1/2" = 1'-0"



WING WALL ELEVATION @ SHEAR KEY FACE
 1/2" = 1'-0"

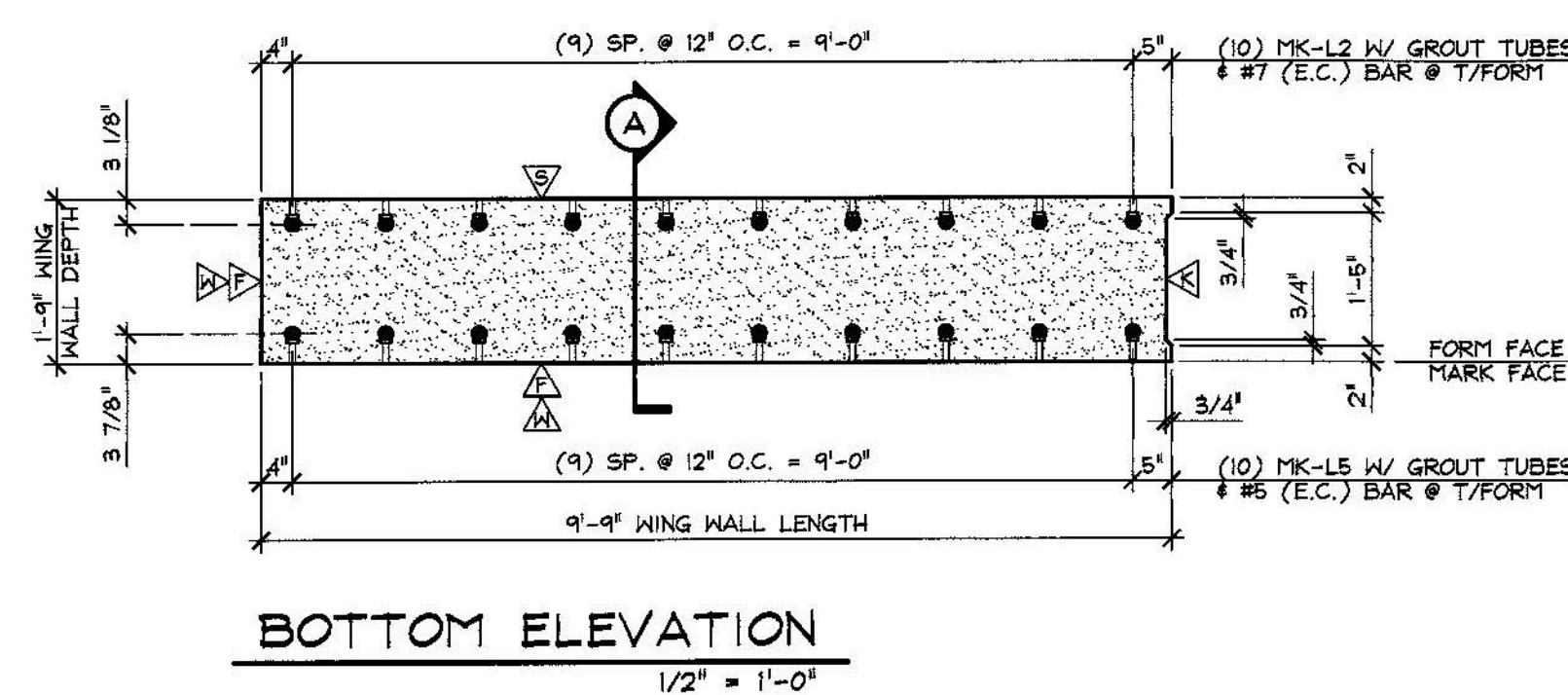


LONGITUDINAL REINFORCING SECTION
 1/2" = 1'-0"

- △ DENOTES SMOOTH SCREED FINISH
- △ DENOTES (1) COAT WATERPROOF SEALER
- △ DENOTES FORM FINISH
- △ DENOTES ROUGHENED FINISH

SHOP NOTE:
 f'c = 5,000 PSI
 f'ci = 3,500 PSI
 MIX #44B15CC

MARK: L-WW4	QTY.: 1	WT.: 9.97 T	VOL.: 4.92 cy
MATERIAL LIST / WING WALL			
ITEM	MARK	DESCRIPTION	QTY.
1	MK-L2	NMB SPLICE SLEEVE TU-X(PG) (EPOXY COATED)	10
2	MK-L5	NMB SPLICE SLEEVE SU-X(PG) (EPOXY COATED)	10
3			
4	L-50BE	#5 BENT BAR (LEVEL 1, EPOXY COATED)	10
5		#5 x 6'-11" (LEVEL 1, EPOXY COATED)	10
6		#5 x 9'-2" (LEVEL 1, EPOXY COATED)	21
7			
8		#7 x 6'-6" (LEVEL 1, EPOXY COATED)	10
9			
10			
11			
12		1 1/2" x 18" L T4 TYSCRU LIFTER (GALV.)	2
13		8T x 6 3/4" SWIFT LIFT LIFTER (GALV.)	4
14			
15			



BOTTOM ELEVATION
 1/2" = 1'-0"

Vermont Agency of Transportation

RECEIVED
 ON: **May 12, 2015**
 and Checked for
CONFORMANCE

BY: **Todd A. Sumner** DATE: **05/13/2015**

SUBMITTAL REVIEW
 Review is only for general conformity to the contract drawings and specifications and shall not relieve the contractor of his entire responsibility under the contract, including among other things, dimensions to be confirmed and correlated at the job site, and information that pertains to the fabrication processes or to techniques of construction.

NO EXCEPTIONS TAKEN
 MAKE CORRECTIONS NOTED
 RESUBMITTAL NOT REQUIRED
 AMEND AND RESUBMIT
 REJECTED - SEE REMARKS

BY: *Todd A. Sumner*
 DATE: *5/12/2015*

4-27-15 GENERAL REVISIONS

APPROVAL STAMP:

J.P. CARRARA & SONS INC.
 Precast & Prestress Manufacturer
 244 GAZ ST., WOODBURY, VERMONT 05553 Phone: (802)388-6361 Fax: (802)388-9010

J.A. McDONALD, INC.
 CONTRACTOR
 LYNDON CENTER, VERMONT

STATE OF VERMONT AGENCY OF TRANSPORTATION
 COUNTY OF ADDISON

DATE: FEB. 6, 2015

TOWN OF LINCOLN
 TH 1 (RURAL MAJOR COLLECTOR) OVER NEW HAVEN RIVER
 BRIDGE NO.: 19 PROJECT NO.: BRP 0188 (S)

SCALE: NOTED

CHKD: M.W. DFTM: B.L.

JOB NO: 23459-015

PRECAST WING WALL DETAILS

DWG. NO: **WW4**