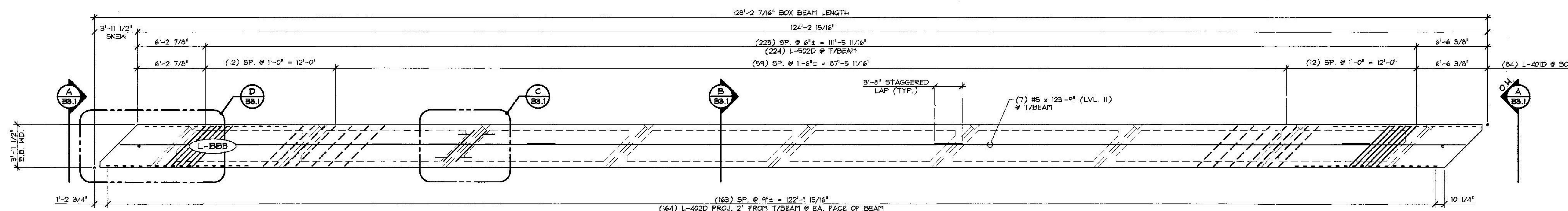
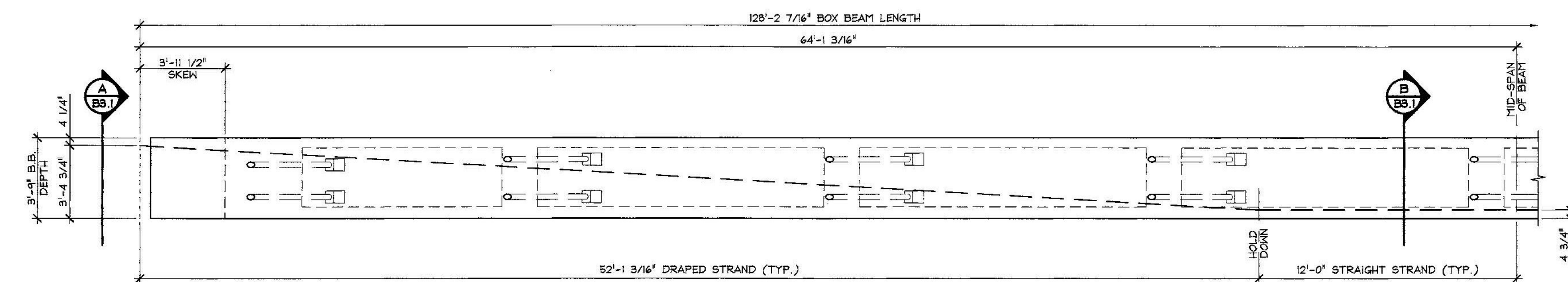


**RECEIVED**  
 ON: **May 12, 2015**  
 and Checked for  
**CONFORMANCE**

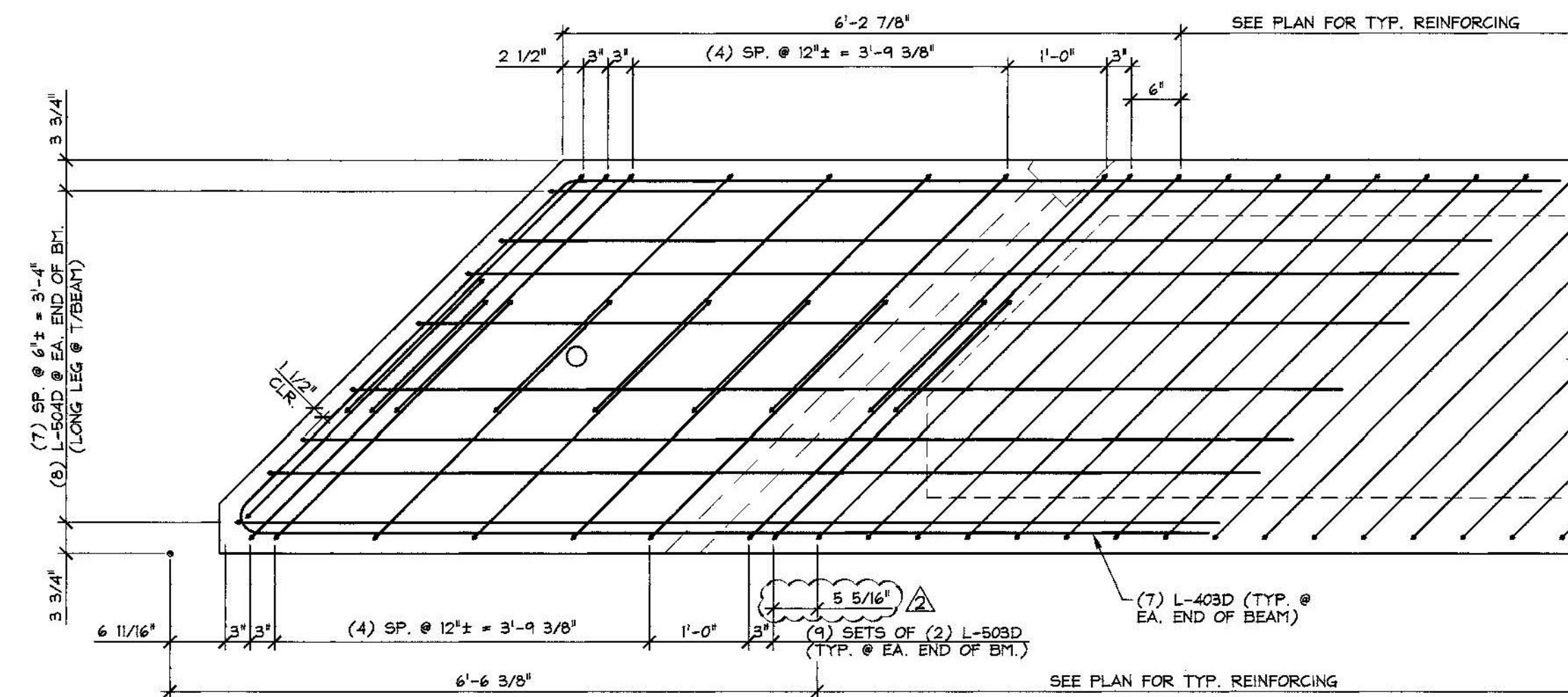
BY: **Todd A. Sumner** DATE: **05/13/2015**



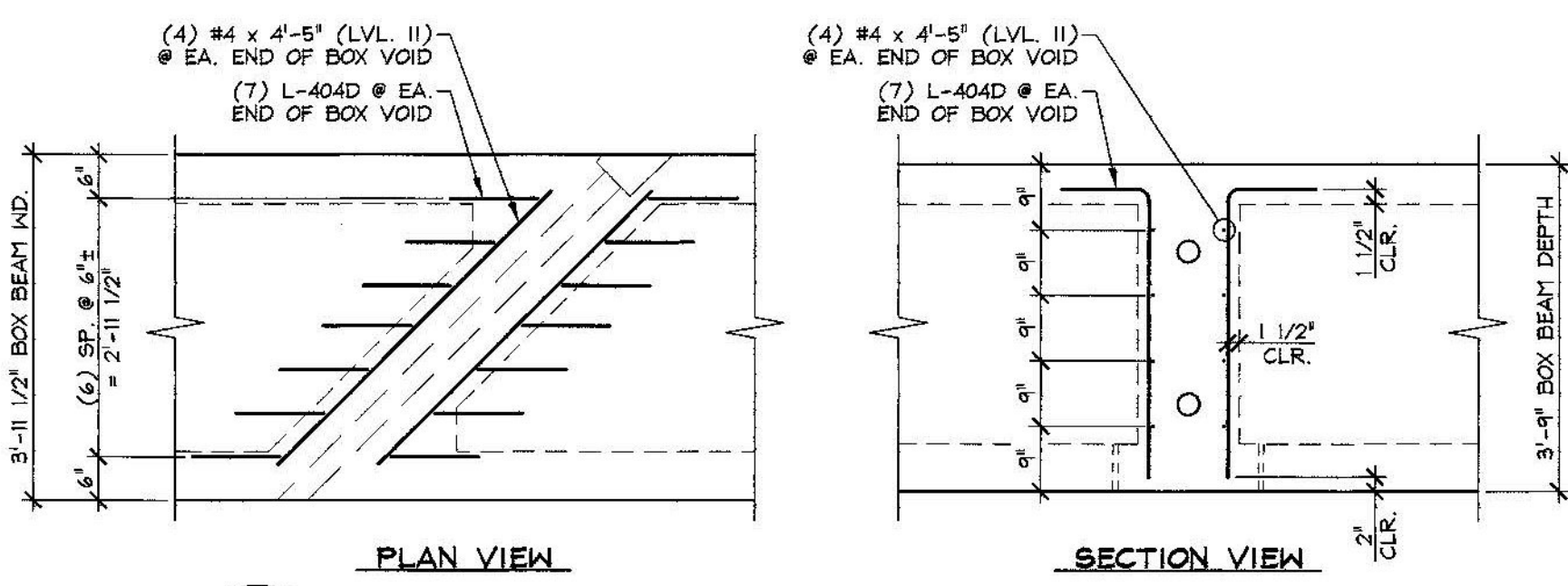
**1 DIMENSIONAL PLAN VIEW IN FORM**  
 B3.1 3/16" = 1'-0"



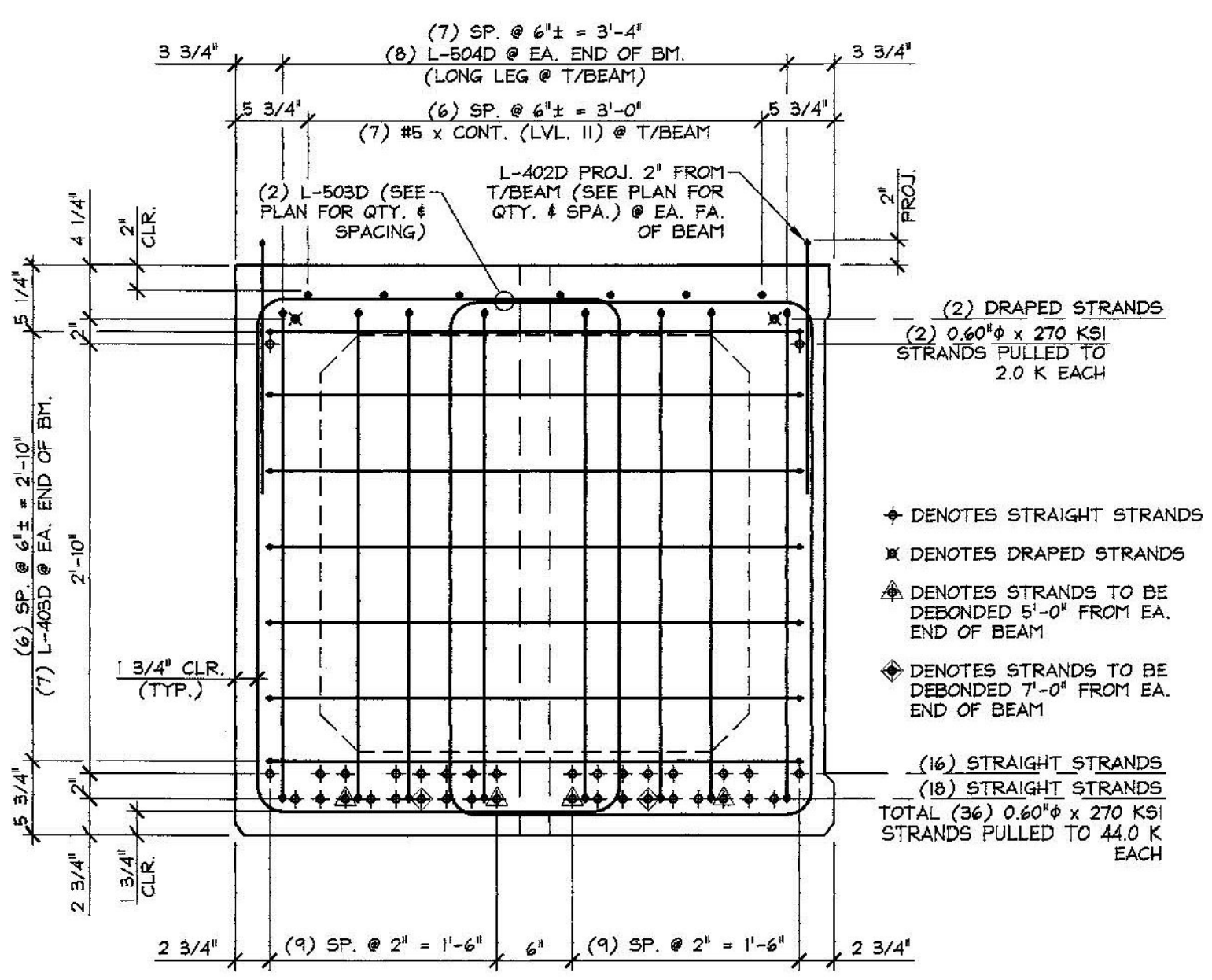
**2 PARTIAL DRAPED STRAND ELEVATION**  
 B3.1 1/4" = 1'-0"



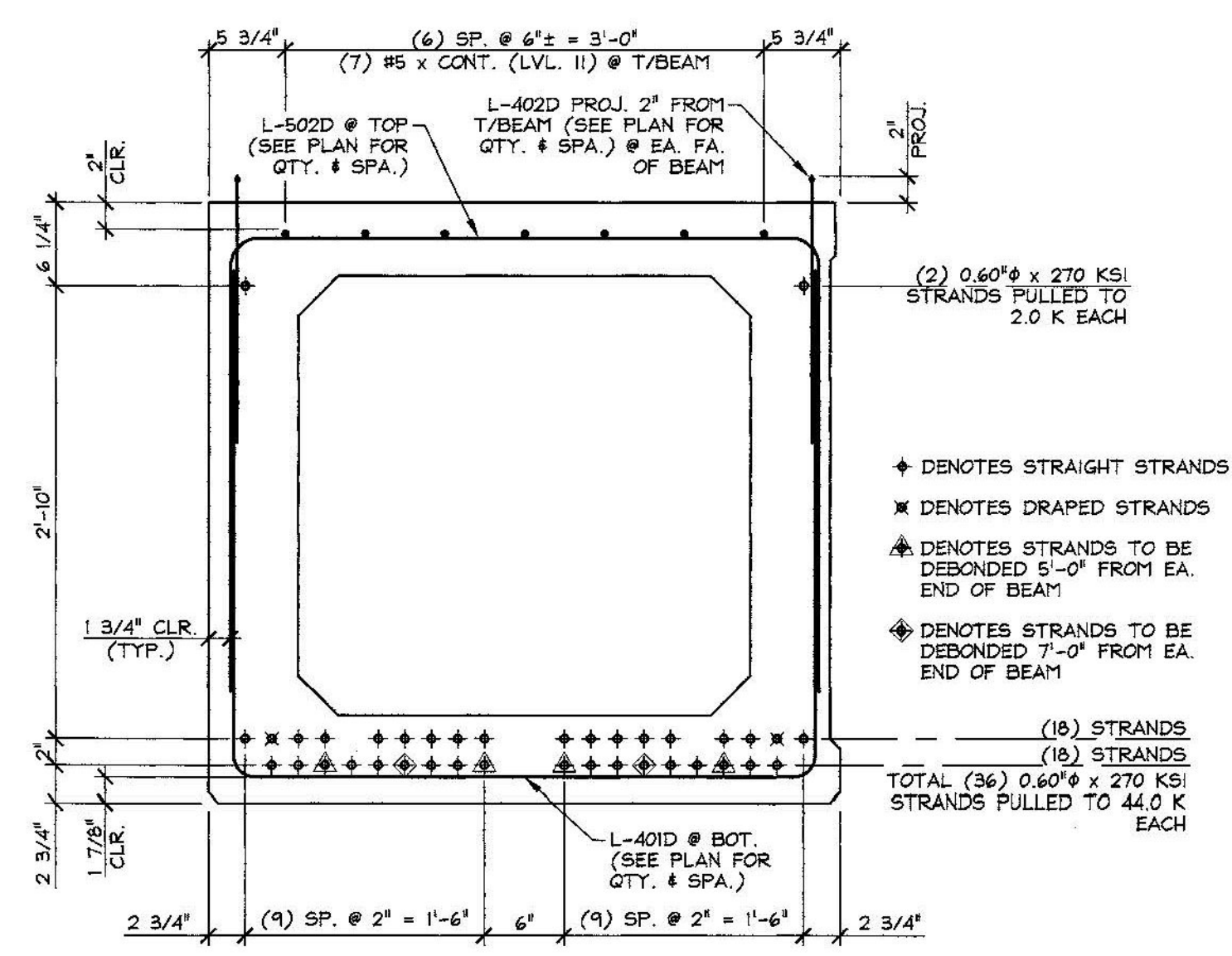
**D END BLOCK REINFORCING PLAN**  
 B3.1 3/4" = 1'-0"



**C DIAPHRAGM REINFORCING DETAILS**  
 B3.1 1/2" = 1'-0"



**A REINFORCING SECTION**  
 B3.1 @ BEAM END 1" = 1'-0"



**B REINFORCING SECTION**  
 B3.1 @ MID-SPAN 1" = 1'-0"

1. DETENSIONING STRANDS 1 THRU 4 BY CUTTING STRANDS AT BULKHEADS AND IN BETWEEN BEAMS.
2. DETENSION DRAPED STRANDS 5 AND 6 BY CUTTING STRANDS AT BULKHEADS AND IN BETWEEN BEAMS.
3. RELEASE HOLD DOWN PINS BY CUTTING COIL ROD JUST ABOVE 'RABBIT'.
4. DETENSION STRANDS 7 THRU 38 (IN SEQUENCE) BY CUTTING STRANDS AT BULK HEADS AND IN BETWEEN BEAMS.
5. CUTTING OF STRANDS IS ACCOMPLISHED BY GRADUALLY HEATING STRANDS AND THEN BURNING THROUGH THEM USING A TORCH.

**DETENSIONING SCHEDULE**  
 N.T.S.

**SUBMITTAL REVIEW**  
 Review is only for general conformity to the contract drawings and specifications and shall not relieve the contractor of his entire responsibility under the contract, including among other things, dimensions to be confirmed and correlated at the job site, and information that pertains to the fabrication processes or to techniques of construction.

NO EXCEPTIONS TAKEN  
 MAKE CORRECTIONS NOTED  
 RESUBMITTAL NOT REQUIRED  
 AMEND AND RESUBMIT  
 REJECTED - SEE REMARKS

BY: *Ryan J. Carrara*  
 DATE: *5/12/2015*

5-11-15 REVISED AS NOTED  
 4-27-15 GENERAL REVISIONS

APPROVAL STAMP:

MARK: L-BB3		QTY.: 1	
MATERIAL LIST / BOX BEAM			
ITEM	MARK	DESCRIPTION	QTY.
1	L-401D	#4 BENT BAR (LEVEL II, DUAL COATED)	84
2	L-402D	#4 HAIRPIN (LEVEL II, DUAL COATED)	328
3	L-403D	#4 BENT BAR (LEVEL II, DUAL COATED)	14
4	L-404D	#4 BENT BAR (LEVEL II, DUAL COATED)	112
5		#4 x 4'-5" (LEVEL II, DUAL COATED)	64
6			
7			
8			
9	L-502D	#5 BENT BAR (LEVEL II, DUAL COATED)	224
10	L-503D	#5 BENT BAR (LEVEL II, DUAL COATED)	36
11	L-504D	#5 BENT BAR (LEVEL II, DUAL COATED)	16
12		#5 x 123'-9" (LEVEL II, DUAL COATED) w/ (3) 3'-8" STAG. LAPS	7
13			
14			
15			

<b>J.P. CARRARA &amp; SONS INC.</b> Precast & Prestress Manufacturer 2464 CDSI CIR., WOODBURY, VERMONT 05753 Phone: (802)388-6361 Fax: (802)388-9010		<b>J.A. McDONALD, INC.</b> CONTRACTOR LYNDON CENTER, VERMONT	
STATE OF VERMONT AGENCY OF TRANSPORTATION COUNTY OF ADDISON		DATE: FEB. 6, 2015 SCALE: NOTED	
TOWN OF LINCOLN TH 1 (RURAL MAJOR COLLECTOR) OVER NEW HAVEN RIVER BRIDGE NO.: 19 PROJECT NO.: BRP 0188 (8)		CHKD: M.J. OFTM: B.L. JOB NO: 23459-015	
PRESTRESSED BOX BEAM REINFORCING DETAILS		DWG. NO: <b>B3.1</b>	