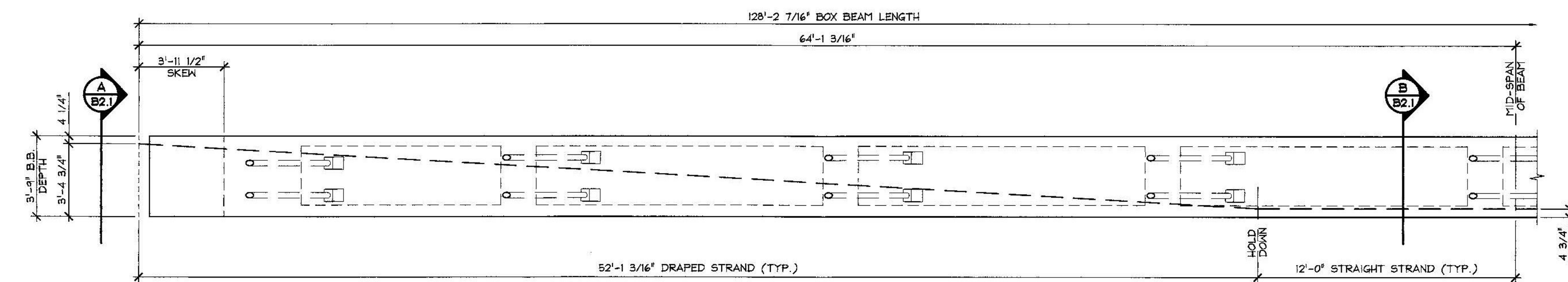
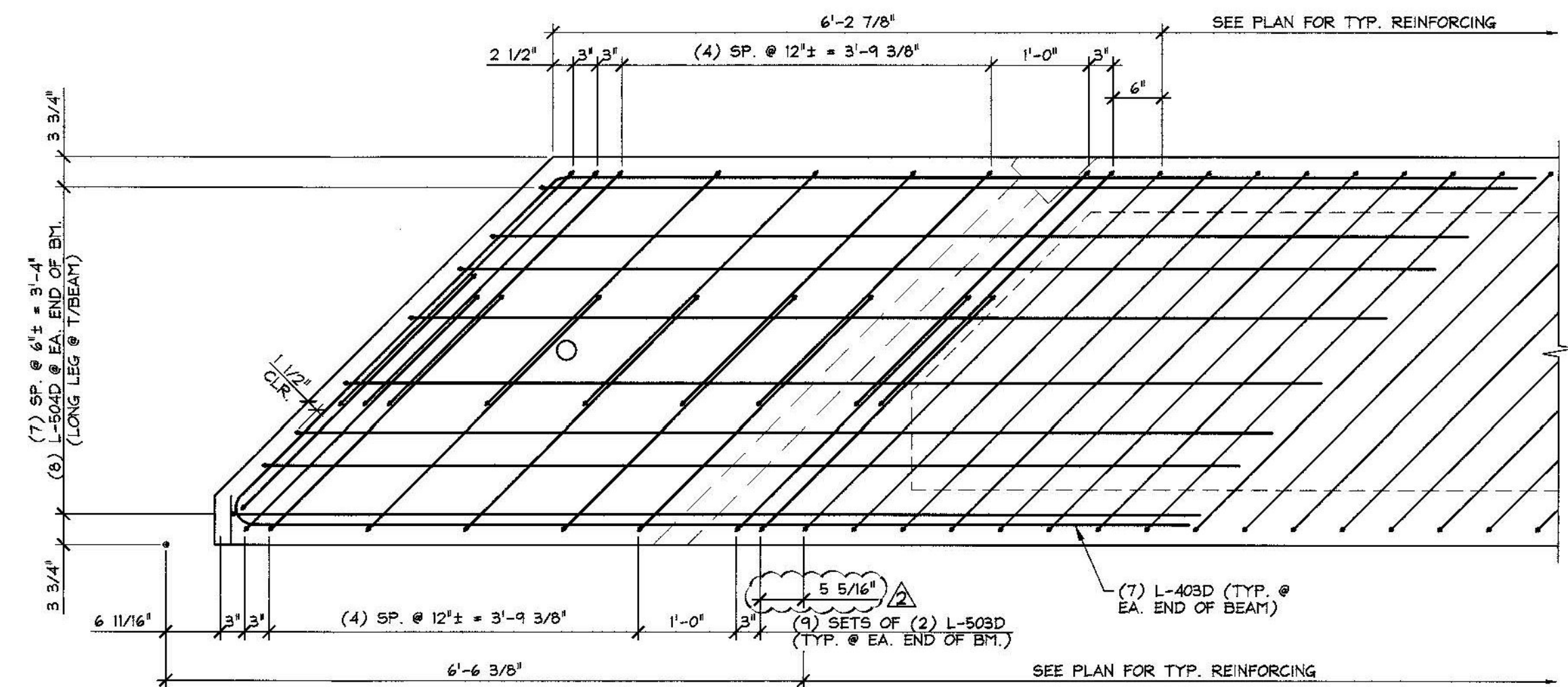


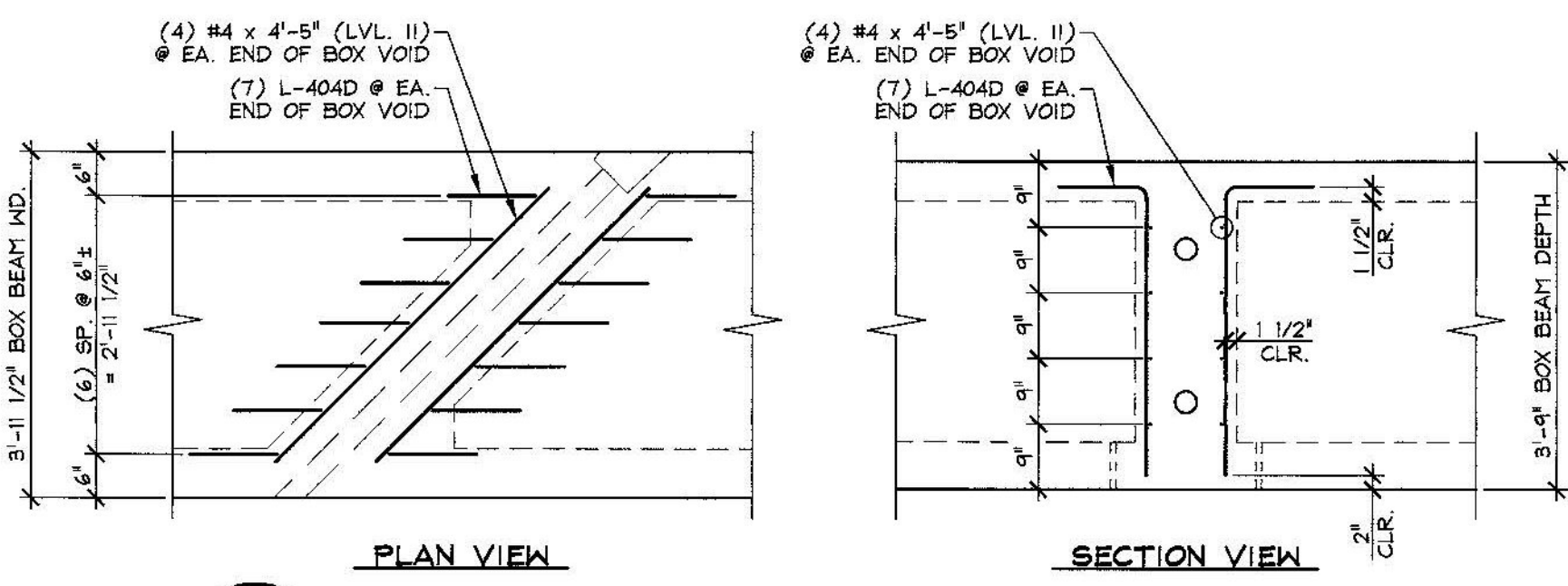
1 DIMENSIONAL PLAN VIEW IN FORM  
B2.1 3/16" = 1'-0"



2 PARTIAL DRAPED STRAND ELEVATION  
B2.1 1/4" = 1'-0"



D END BLOCK REINFORCING PLAN  
B2.1 LONGITUDINAL REINFORCING & COMPOSITE REINFORCING NOT SHOWN FOR CLARITY 3/4" = 1'-0"



C DIAPHRAGM REINFORCING DETAILS  
B2.1 1/2" = 1'-0"

① ② ③ ④ ⑤ ⑥ ⑦ ⑧ ⑨ ⑩ ⑪ ⑫ ⑬ ⑭ ⑮ ⑯ ⑰ ⑱ ⑲ ⑳ ㉑ ㉒ ㉓ ㉔ ㉕ ㉖ ㉗ ㉘ ㉙ ㉚ ㉛ ㉜ ㉝ ㉞ ㉟ ㊱ ㊲ ㊳ ㊴ ㊵ ㊶ ㊷ ㊸ ㊹ ㊺ ㊻ ㊼ ㊽ ㊾ ㊿

1. DETENSIONING STRANDS 1 THRU 4 BY CUTTING STRANDS AT BULKHEADS AND IN BETWEEN BEAMS.
2. DETENSION DRAPED STRANDS 5 AND 6 BY CUTTING STRANDS AT BULKHEADS AND IN BETWEEN BEAMS.
3. RELEASE HOLD DOWN PINS BY CUTTING COIL ROD JUST ABOVE "RABBIT".
4. DETENSION STRANDS 7 THRU 38 (IN SEQUENCE) BY CUTTING STRANDS AT BULK HEADS AND IN BETWEEN BEAMS.
5. CUTTING OF STRANDS IS ACCOMPLISHED BY GRADUALLY HEATING STRANDS AND THEN BURNING THROUGH THEM USING A TORCH.

DETENSIONING SCHEDULE  
N.T.S.

5-11-15 REVISED AS NOTED  
4-27-15 GENERAL REVISIONS

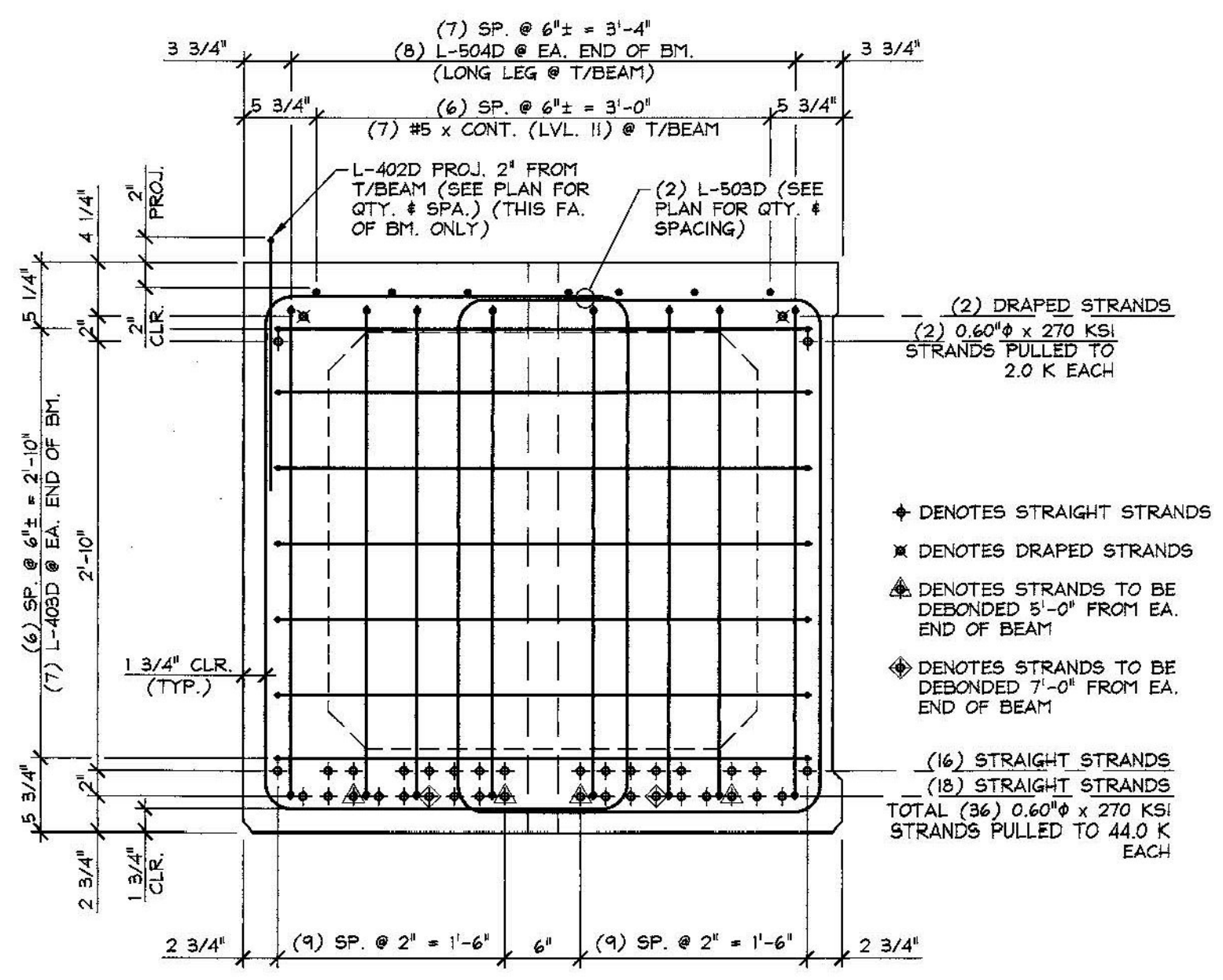
**SUBMITTAL REVIEW**  
Review is only for general conformity to the contract drawings and specifications and shall not relieve the contractor of his entire responsibility under the contract, including among other things, dimensions to be confirmed and correlated at the job-site, and information that pertains to the fabrication processes or to techniques of construction.

NO EXCEPTIONS TAKEN  
 MAKE CORRECTIONS NOTED  
 RESUBMITTAL NOT REQUIRED  
 AMEND AND RESUBMIT  
 REJECTED - SEE REMARKS

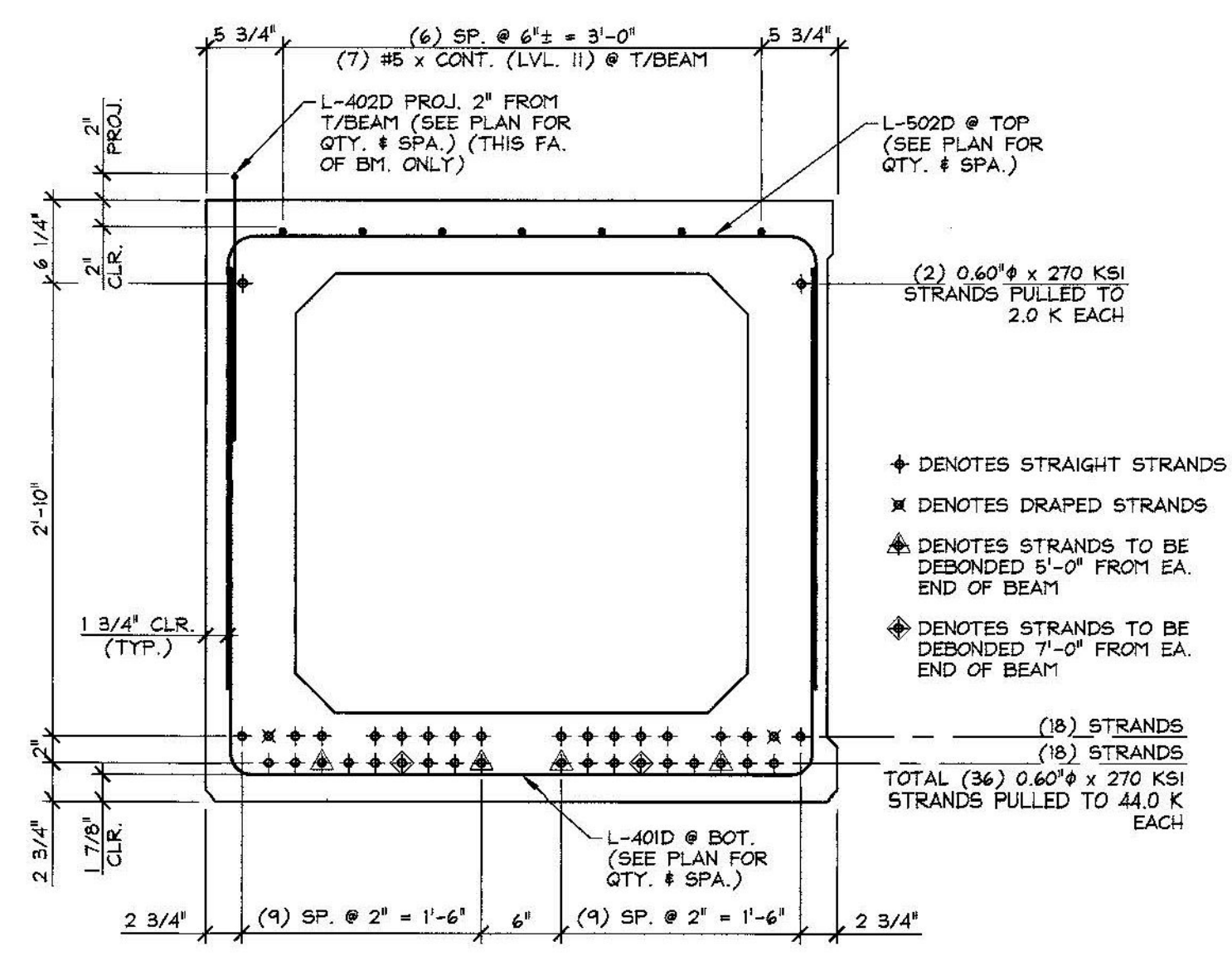
BY: *Raw 4.0*  
DATE: *5/12/2015*

APPROVAL STAMP:  
J.P. CARRARA & SONS INC.  
Precast & Prestress Manufacturer  
2464 OSE ST., MIDDLEBURY, VERMONT 05753 Phone: (802)398-6361 Fax: (802)398-9010

MARK: L-BB2		QTY.: 1	
MATERIAL LIST / BOX BEAM			
ITEM	MARK	DESCRIPTION	QTY.
1	L-401D	#4 BENT BAR (LEVEL II, DUAL COATED)	84
2	L-402D	#4 HAIRPIN (LEVEL II, DUAL COATED)	164
3	L-403D	#4 BENT BAR (LEVEL II, DUAL COATED)	14
4	L-404D	#4 BENT BAR (LEVEL II, DUAL COATED)	112
5		#4 x 4'-5" (LEVEL II, DUAL COATED)	64
6			
7			
8			
9	L-502D	#5 BENT BAR (LEVEL II, DUAL COATED)	224
10	L-503D	#5 BENT BAR (LEVEL II, DUAL COATED)	36
11	L-504D	#5 BENT BAR (LEVEL II, DUAL COATED)	16
12		#5 x 123'-9" (LEVEL II, DUAL COATED) W/ (3) 3'-8" STAG. LAPS	7
13			
14			
15			



A REINFORCING SECTION  
B2.1 @ BEAM END 1" = 1'-0"



B REINFORCING SECTION  
B2.1 @ MID-SPAN 1" = 1'-0"

J.P. CARRARA & SONS INC.  
Precast & Prestress Manufacturer  
2464 OSE ST., MIDDLEBURY, VERMONT 05753 Phone: (802)398-6361 Fax: (802)398-9010

J.A. McDONALD, INC.  
CONTRACTOR  
LYNDON CENTER, VERMONT

STATE OF VERMONT AGENCY OF TRANSPORTATION  
COUNTY OF ADDISON

TOWN OF LINCOLN  
TH 1 (RURAL MAJOR COLLECTOR) OVER NEW HAVEN RIVER  
BRIDGE NO.: 19 PROJECT NO.: BRP 0188 (8)

PRESTRESSED BOX BEAM  
REINFORCING DETAILS

DATE: FEB. 6, 2015  
SCALE: NOTED  
CHKD: M.W. DFTM: B.L.  
JOB NO: 23459-015  
DWG. NO: B2.1