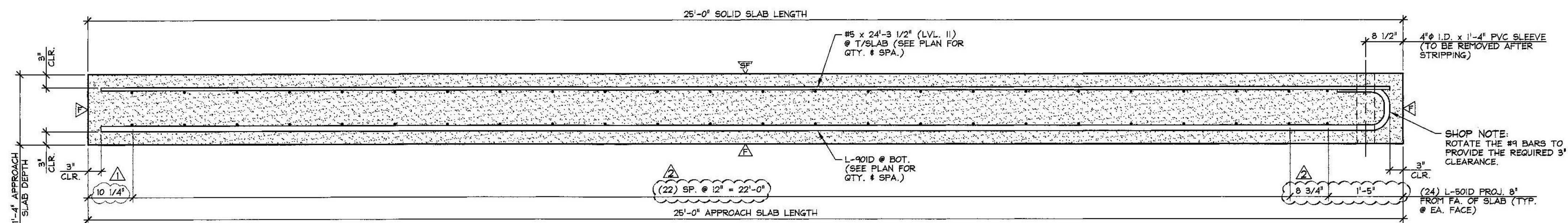
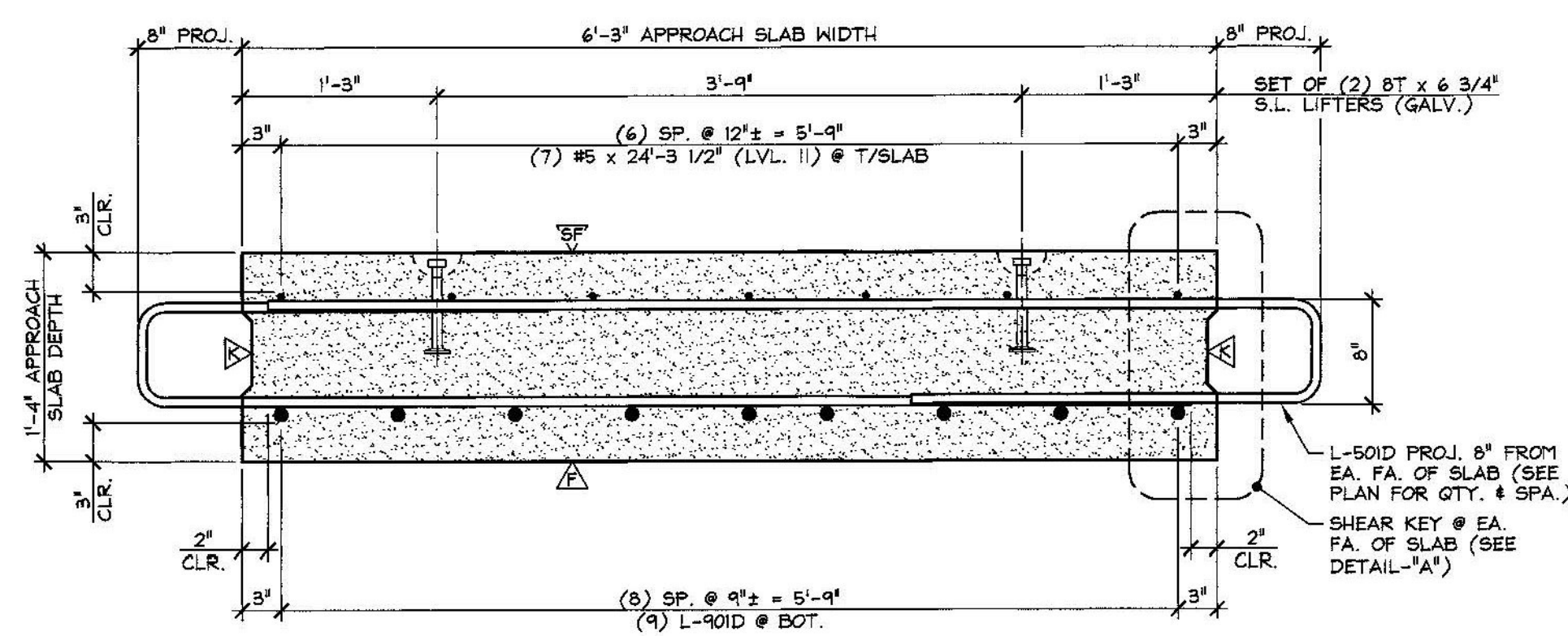


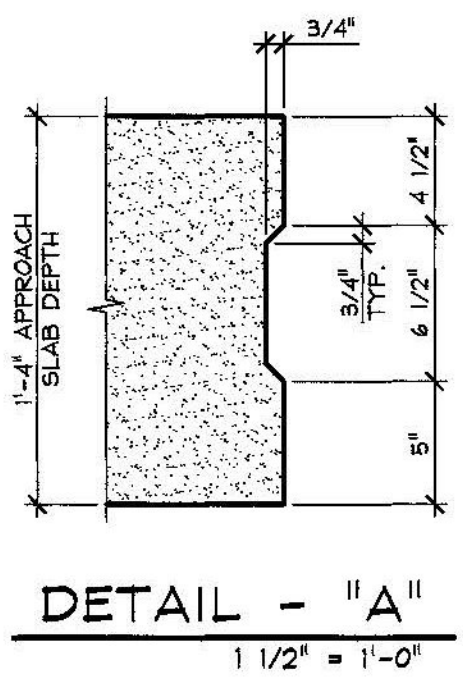
I DIMENSIONAL PLAN VIEW IN FORM
AS4
1/2" = 1'-0"



A LONGITUDINAL SECTION
AS4
3/4" = 1'-0"



B LONGITUDINAL SECTION
AS4
1" = 1'-0"



DETAIL - "A"
1 1/2" = 1'-0"

SUBMITTAL REVIEW
Review is only for general conformity to the contract drawings and specifications and shall not relieve the contractor of his entire responsibility under the contract, including among other things, dimensions to be confirmed and correlated at the job site, and information that pertains to the fabrication processes or to techniques of construction.

NO EXCEPTIONS TAKEN
 MAKE CORRECTIONS NOTED
 RESUBMITTAL NOT REQUIRED
 AMEND AND RESUBMIT
 REJECTED - SEE REMARKS

BY: *Ray J. Carrara*
 DATE: 5/12/2015

5-11-15 REVISED AS NOTED
 4-27-15 GENERAL REVISIONS

APPROVAL STAMP:

J.P. CARRARA & SONS INC.
 Precast & Prestress Manufacturer
 2464 CASE STR., MIDDLEBURY, VERMONT 05753 Phone: (802)388-6361 Fax: (802)388-9010

J.A. McDONALD, INC.
 CONTRACTOR
 LYNDON CENTER, VERMONT

STATE OF VERMONT AGENCY OF TRANSPORTATION
 COUNTY OF ADDISON

TOWN OF LINCOLN
 TH 1 (RURAL MAJOR COLLECTOR) OVER NEW HAVEN RIVER
 BRIDGE NO.: 19 PROJECT NO.: BRP 0188 (8)

PRECAST APPROACH SLAB DETAILS

DATE: FEB. 6, 2015
 SCALE: NOTED
 CHKD: M.W. DFTM: B.L.
 JOB NO: 23459-015
 DWG. NO: AS4

Vermont Agency of Transportation
RECEIVED
 ON: May 12, 2015
 and Checked for
CONFORMANCE
 BY: Todd A. Sumner DATE: 05/13/2015

△ DENOTES FORM FINISH
 ▽ DENOTES SMOOTH FLOAT FINISH
 ▲ DENOTES ROUGHENED FINISH

SHOP NOTE:
 Fc = 5,000 PSI
 Fcl = 3,500 PSI
 MIX #4481MSCC

MATERIAL LIST / APPROACH SLAB			
ITEM	MARK	DESCRIPTION	QTY.
1	L-50ID	#5 BENT BAR (LEVEL II, DUAL COATED)	48
2		#5 x 24'-3 1/2" (LEVEL II, DUAL COATED)	7
3			
4			
5	L-90ID	#9 BENT BAR (LEVEL II, DUAL COATED)	9
6			
7			
8		4" I.D. x 1'-4" PVC SLEEVE	6
9		BT x 6 3/4" SWIFT LIFT LIFTER (GALV.)	4
10			