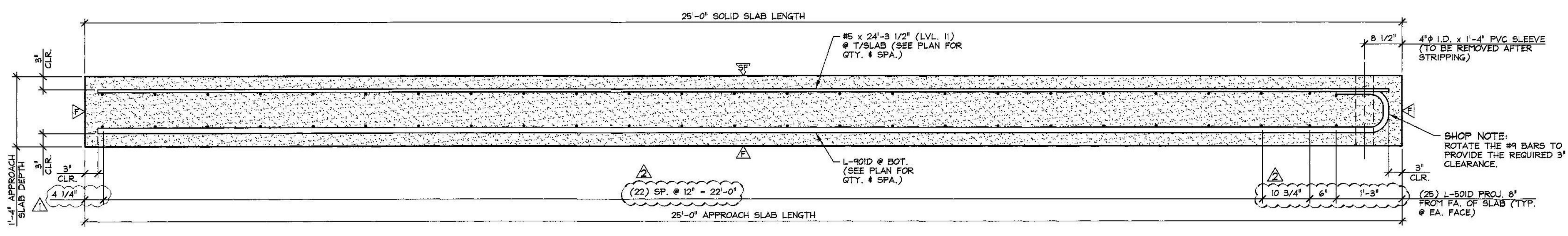
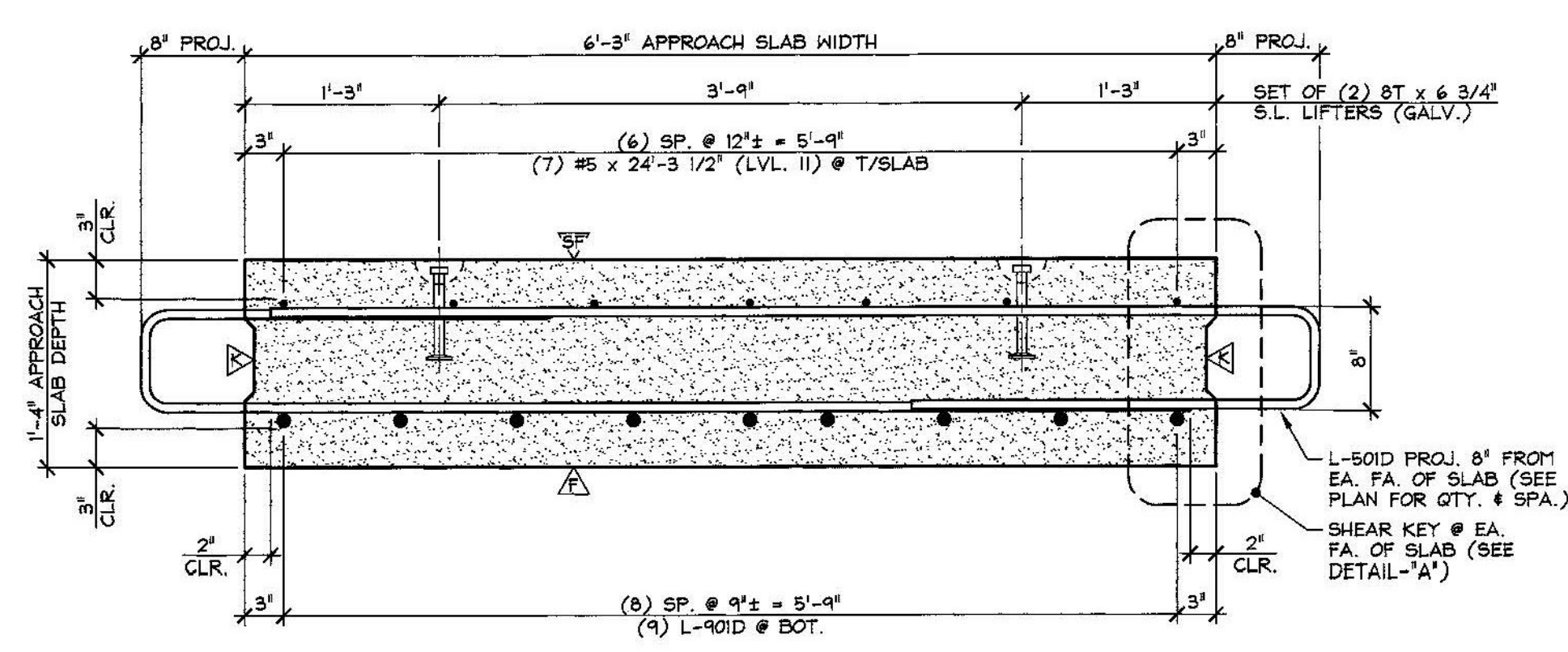


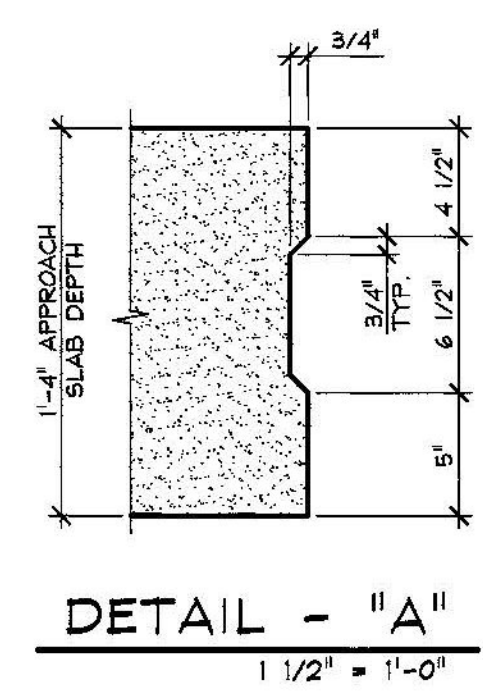
1 DIMENSIONAL PLAN VIEW IN FORM
1/2" = 1'-0"



A LONGITUDINAL SECTION
3/4" = 1'-0"



B LONGITUDINAL SECTION
1" = 1'-0"



DETAIL - "A"
1 1/2" = 1'-0"

Vermont Agency of Transportation
RECEIVED
ON: **May 12, 2015**
and Checked for
CONFORMANCE
BY: **Todd A. Sumner** DATE: **05/13/2015**

△ DENOTES FORM FINISH
▽ DENOTES SMOOTH FLOAT FINISH
◻ DENOTES ROUGHENED FINISH

SHOP NOTE:
f'c = 5,000 PSI
f'ci = 3,500 PSI
MIX #445M8CC

MARK:	L-ASI	QTY.:	2	WT.:	15.52 T	VOL.:	7.66 cy
MATERIAL LIST / APPROACH SLAB							
ITEM	MARK	DESCRIPTION				QTY.	
1	L-50ID	#5 BENT BAR (LEVEL II, DUAL COATED)				50	
2		#5 x 24'-3 1/2" (LVL. II), DUAL COATED				7	
3							
4							
5	L-90ID	#9 BENT BAR (LEVEL II, DUAL COATED)				9	
6							
7							
8		4" I.D. x 1'-4" PVC SLEEVE				6	
9		8T x 6 3/4" SWIFT LIFT LIFTER (GALV.)				4	
10							

SUBMITTAL REVIEW
Review is only for general conformity to the contract drawings and specifications and shall not relieve the contractor of his entire responsibility under the contract, including among other things, dimensions to be confirmed and correlated at the job site, and information that pertains to the fabrication processes or to techniques of construction.

NO EXCEPTIONS TAKEN
 MAKE CORRECTIONS NOTED
 RESUBMITTAL NOT REQUIRED
 AMEND AND RESUBMIT
 REJECTED - SEE REMARKS

BY: *Ray J. Carrara*
 DATE: *5/12/2015*

△ 5-11-15 REVISED AS NOTED
 △ 4-27-15 GENERAL REVISIONS

APPROVAL STAMP:

J.P. CARRARA & SONS INC. Precast & Prestress Manufacturer 2464 CASE ST., MIDDLEBURY, VERMONT 05753 Phone: (802)388-6361 Fax: (802)388-9010		J.A. McDONALD, INC. CONTRACTOR LYNDON CENTER, VERMONT	
STATE OF VERMONT AGENCY OF TRANSPORTATION COUNTY OF ADDISON		DATE: FEB. 6, 2015 SCALE: NOTED	
TOWN OF LINCOLN TH 1 (RURAL MAJOR COLLECTOR) OVER NEW HAVEN RIVER BRIDGE NO.: 19 PROJECT NO.: BRP 0168 (B)		CHKD: M.W. DFTM: B.L. JOB NO: 23459-015	
PRECAST APPROACH SLAB DETAILS		DWG. NO: ASI	