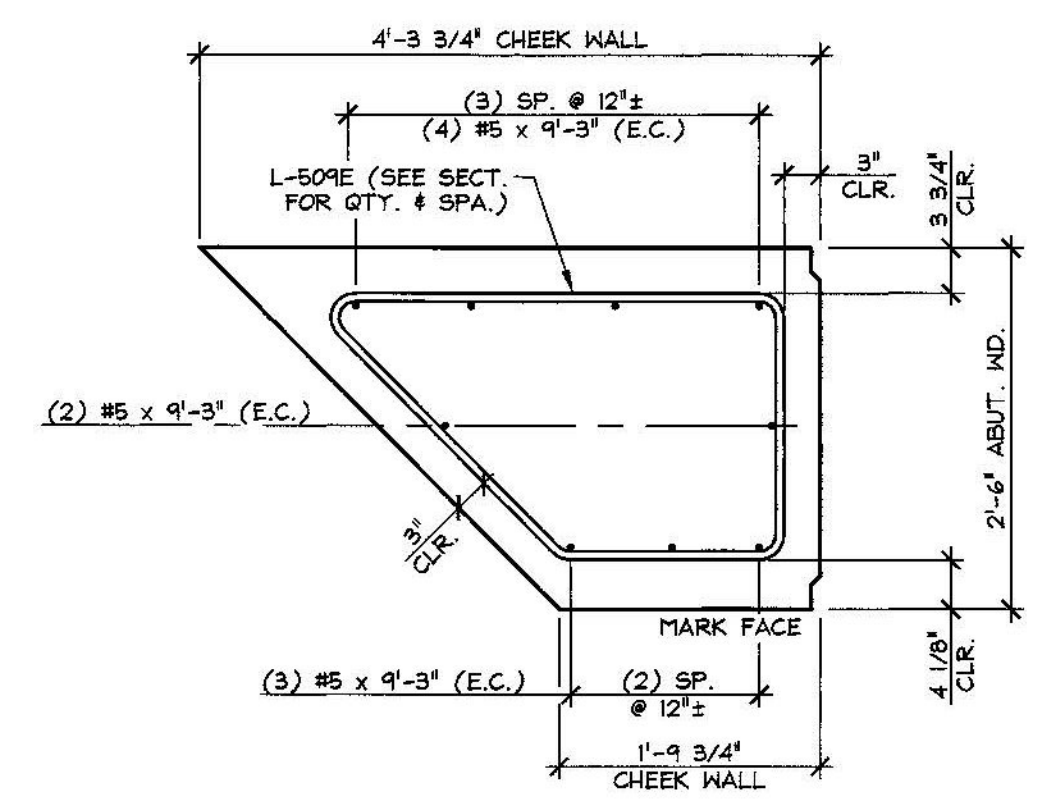
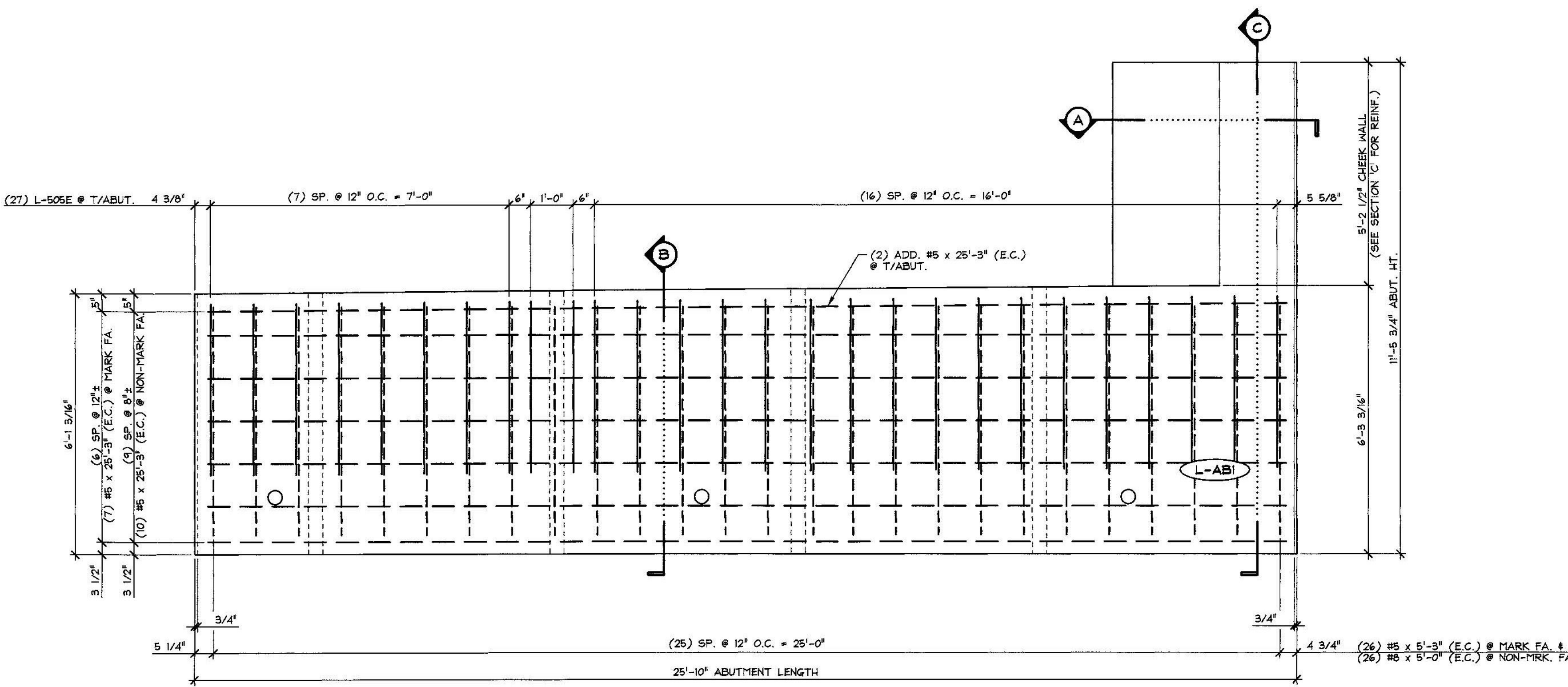


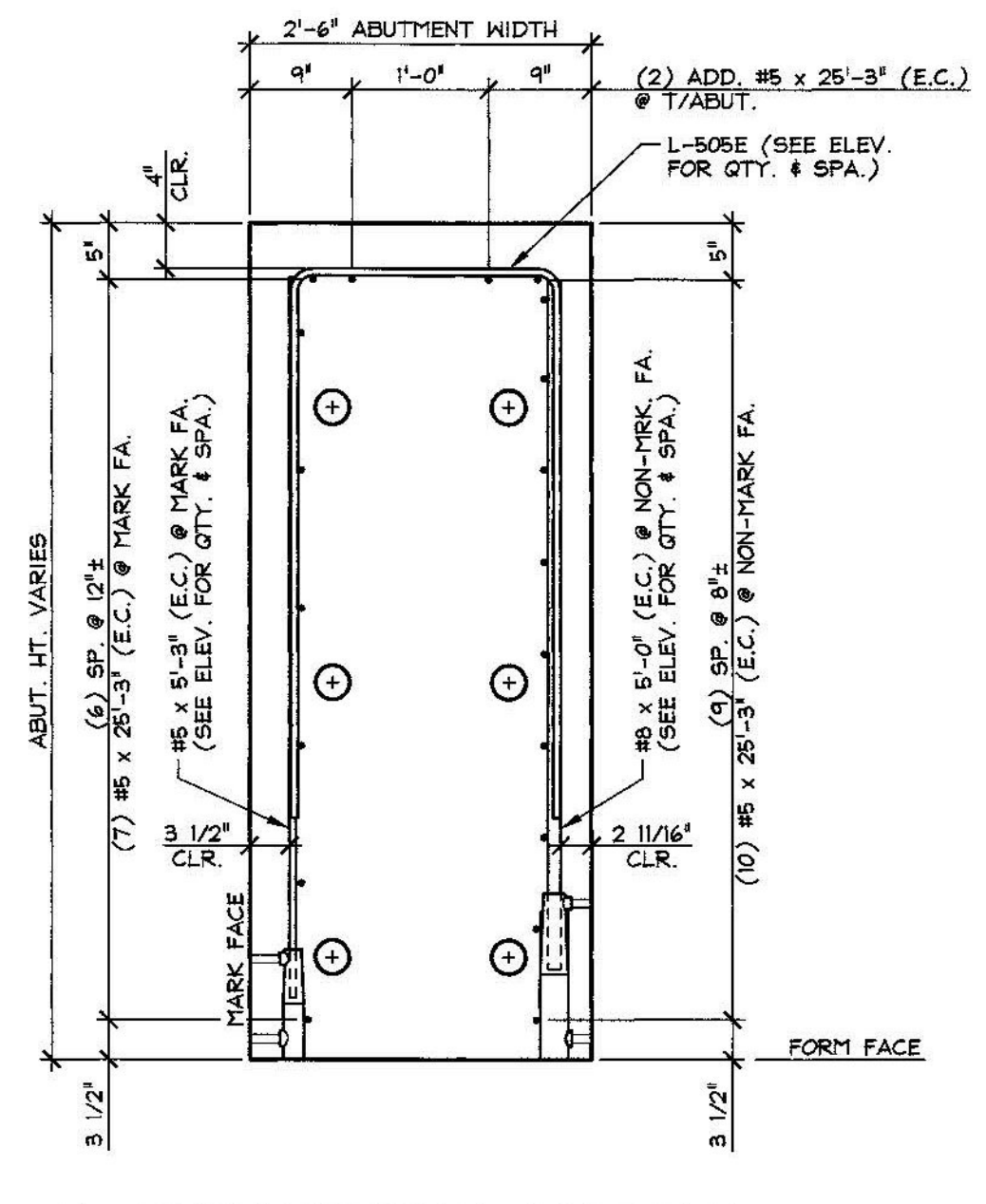
REINFORCING PLAN VIEW IN FORM
1/2" = 1'-0"



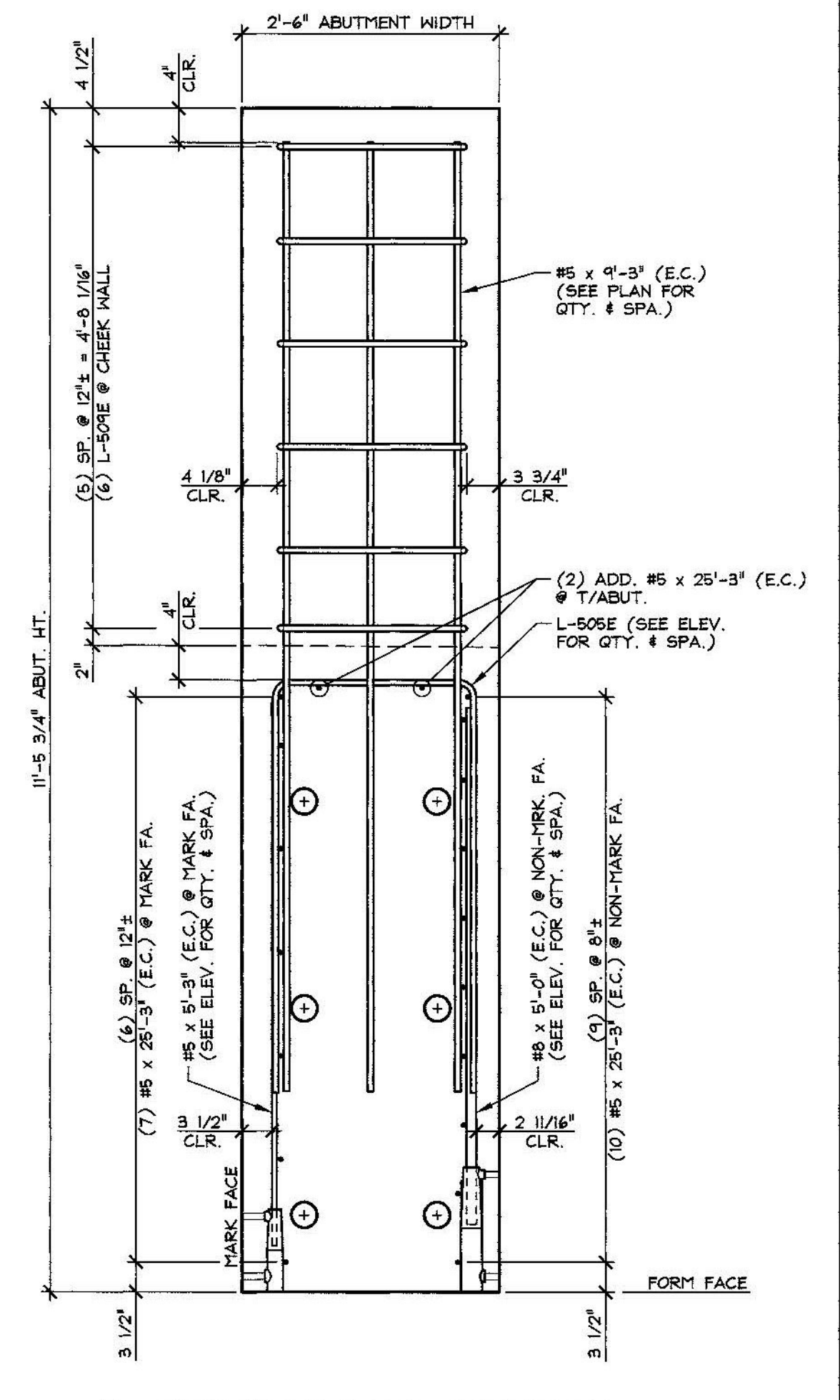
CHEEK WALL REINF. PLAN
3/4" = 1'-0"



MARK FACE REINFORCING ELEVATION
1/2" = 1'-0"



REINFORCING SECTION
3/4" = 1'-0"



REINFORCING SECTION
3/4" = 1'-0"

MARK:	L-ABI	QTY.:	1
MATERIAL LIST / ABUTMENT			
ITEM	MARK	DESCRIPTION	QTY.
1	L-509E	#5 BENT BAR (LEVEL 1, EPOXY COATED)	27
2	L-509E	#5 BENT BAR (LEVEL 1, EPOXY COATED)	6
3		#5 x 25'-3" (LEVEL 1, EPOXY COATED)	19
4		#5 x 5'-3" (LEVEL 1, EPOXY COATED)	26
5		#5 x 9'-3" (LEVEL 1, EPOXY COATED)	9
6			
7		#8 x 5'-0" (LEVEL 1, EPOXY COATED)	26
8			
9			
10			

Vermont Agency of Transportation
RECEIVED
 ON: **May 12, 2015**
 and Checked for
CONFORMANCE
 BY: **Todd A. Sumner** DATE: **05/13/2015**

SUBMITTAL REVIEW
 Review is only for general conformity to the contract drawings and specifications and shall not relieve the contractor of his entire responsibility under the contract, including among other things, dimensions to be confirmed and correlated at the job site, and information that pertains to the fabrication processes or to techniques of construction.

NO EXCEPTIONS TAKEN
 MAKE CORRECTIONS NOTED - RESUBMITTAL NOT REQUIRED
 AMEND AND RESUBMIT
 REJECTED - SEE REMARKS

BY: *[Signature]*
 DATE: *5/12/2015*

4-27-15 GENERAL REVISIONS

APPROVAL STAMP:

J.P. CARRARA & SONS INC.
 Precast & Prestress Manufacturer
 2464 GAGE CIR., MIDDLEBURY, VERMONT 05753 Phone: (802) 388-6361 Fax: (802) 388-9010

J.A. McDONALD, INC.
 CONTRACTOR
 LYNDON CENTER, VERMONT

STATE OF VERMONT AGENCY OF TRANSPORTATION
 COUNTY OF ADDISON

TOWN OF LINCOLN
 TH 1 (RURAL MAJOR COLLECTOR) OVER NEW HAVEN RIVER
 BRIDGE NO.: 19 PROJECT NO.: BRP 0188 (8)

DATE: FEB. 6, 2015
 SCALE: NOTED
 CHKD: M.W. DFTM: B.L.
 JOB NO: 23459-015
 DWG. NO: **ABI.1**