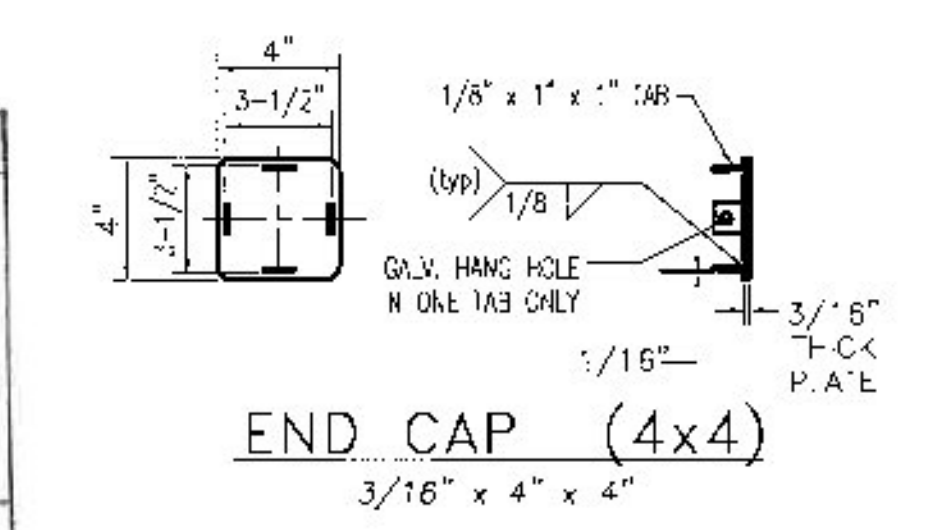
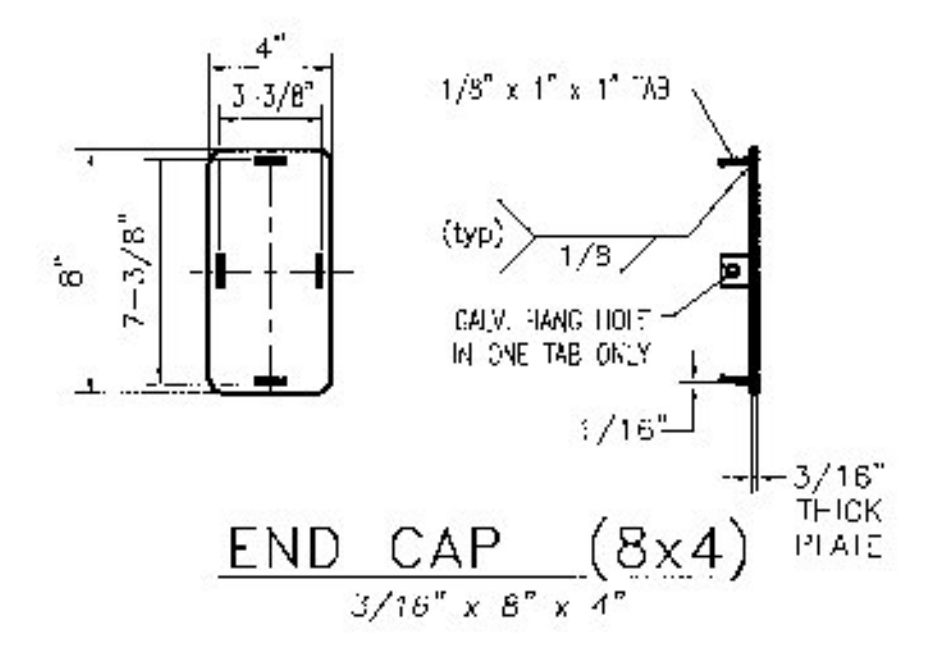


STEEL POST CHART

| No. | A | B | C |
|-----|--------|--------|--------|
| P01 | 10.250 | 19.250 | 32.687 |
| P02 | 9.125 | 17.312 | 30.750 |
| P03 | 8.000 | 15.437 | 28.750 |
| P04 | 6.875 | 13.500 | 26.875 |

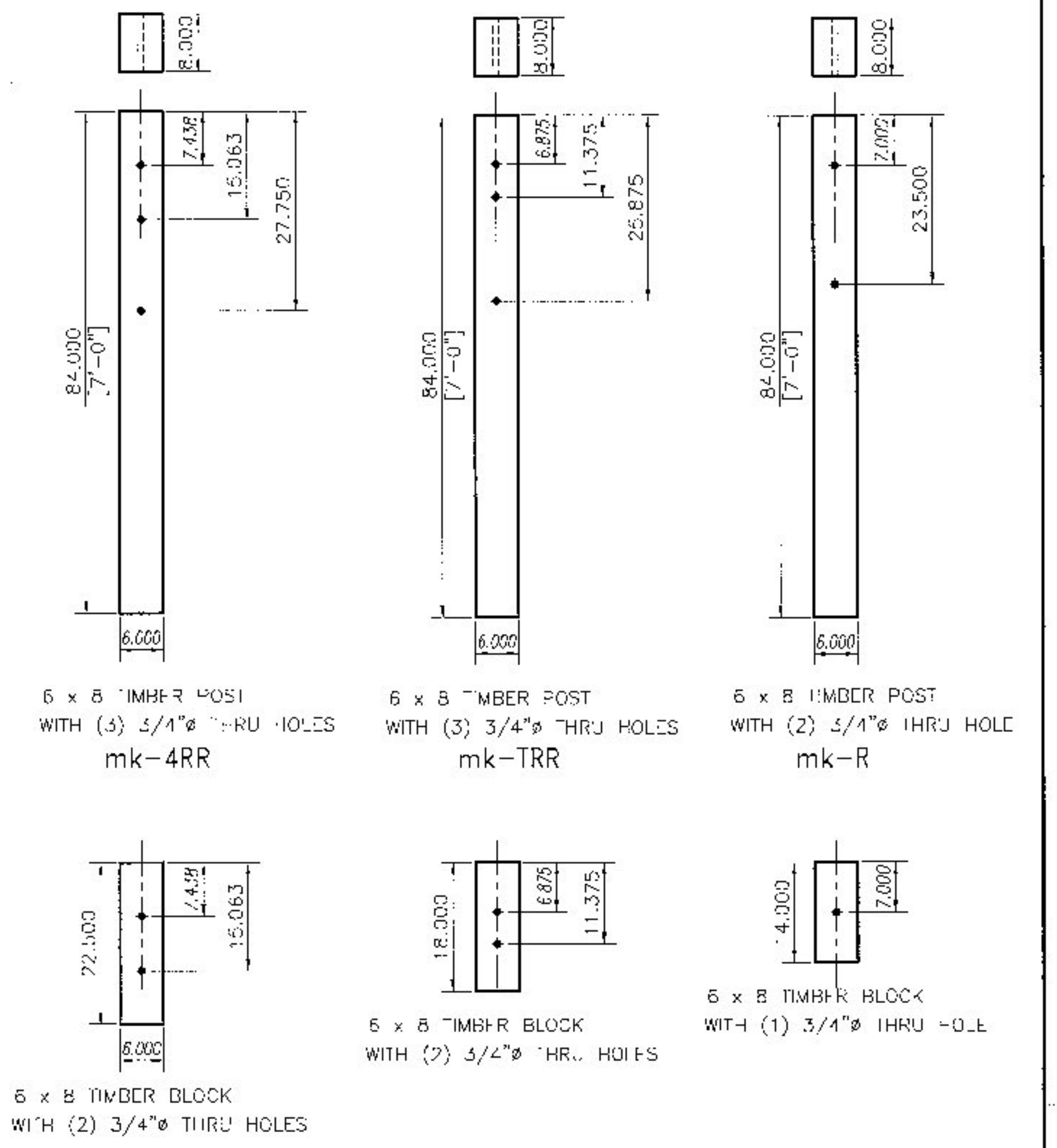
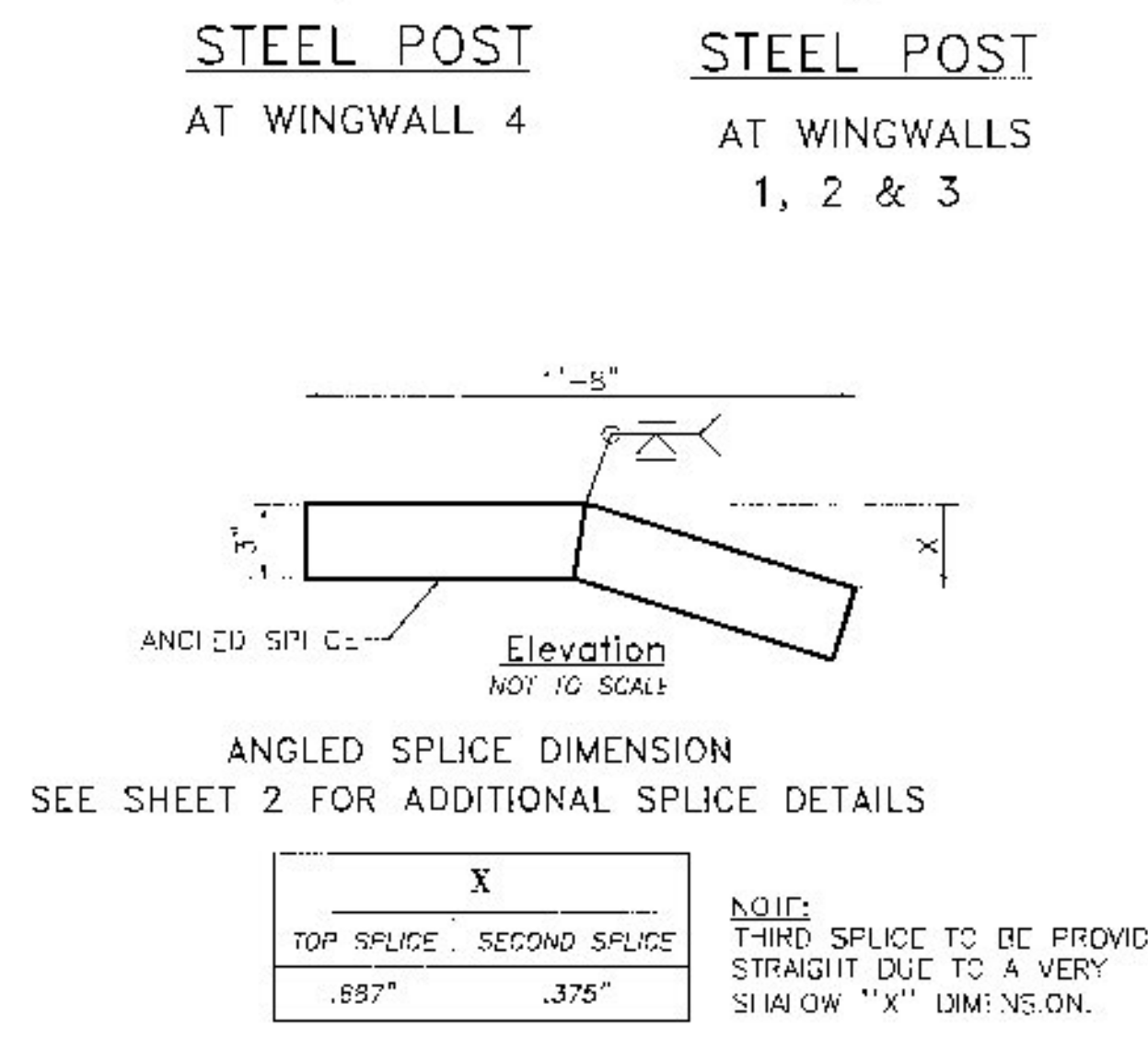
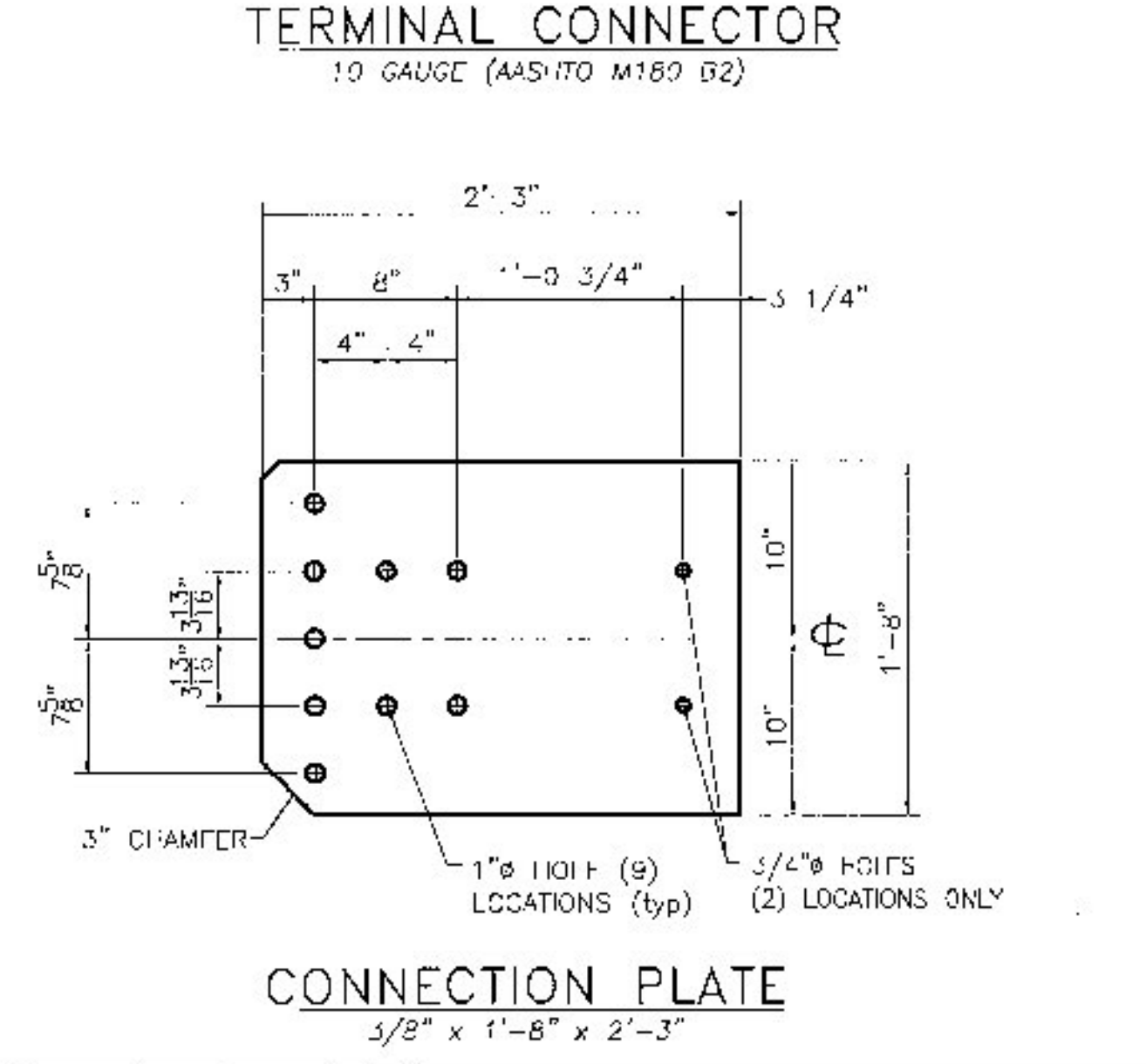


SUBMITTAL REVIEW

Review is only for general conformity to the contract drawings and specifications and shall not relieve the contractor of his entire responsibility under the contract, including among other things, dimensions to be confirmed and correlated at the job site, and information that pertains to the fabrication processes or to techniques of construction.

NO EXCEPTIONS TAKEN
 MAKE CORRECTIONS NOTED
 RESUBMITTAL NOT REQUIRED
 AMEND AND RESUBMIT
 REJECTED - SEE REMARKS

BY: *Todd A. Sumner*
 DATE: *5/26/15*



- NOTES:
- ALL BRIDGE APPROACH RAIL MATERIALS, DIMENSIONS, SIZES, AND NOTES SHALL BE THE SAME AS THOSE OF THE BRIDGE RAIL UNLESS OTHERWISE NOTED. SEE BRIDGE RAIL SHEETS FOR NOTES AND ADDITIONAL INFORMATION.
 - CARRIAGE BOLTS SHALL BE ASTM A307, AND NUTS SHALL BE ASTM A563 GRADE A OR B11FR (GALVANIZED).
 - WELD SPLICE BAR AND RAIL TUBES TO FIT BEND. USE COMPLETE JOINT PENETRATION BUTT WELD (A-U7).
 - PAYMENT FOR GLANDRAL APPROACH SECTION, GALVANIZED 4 RAIL BOX BEAM SHALL INCLUDE THE TERMINAL CONNECTOR, THE CONNECTION PLATE, RAIL POSTS, BLOCKS AND ATTACHMENT HARDWARE.
 - ALL APPROACH SPLICES SHALL BE TAPPED IN THE DIRECTION OF TRAFFIC.
 - SEE SHEET 3 FOR ADDITIONAL MODIFIED APPROACH DETAILS AT WINGWALL 4.

Vermont Agency of Transportation

RECEIVED

ON: **May 19, 2015**

and Checked for

CONFORMANCE

BY: **Todd A. Sumner** DATE: **05/27/2015**

HIGHWAY SAFETY CORP

GLASTONBURY, CT
860-633-9445

ITEM 525.34 BRIDGE RAILING, GALVANIZED 4 RAIL BOX BEAM
 ITEM 621.73 GUARDRAIL APPROACH SECTION, GALVANIZED 4 RAIL BOX BEAM
 TH1 EAST RIVER ROAD BRIDGE #19
 TOWN OF LINCOLN, VT ADDISON COUNTY
 BR# 0188 (B)

GENERAL CONTRACTOR: LAFAYETTE

DATE: 03-27-15

SCALE: NONE

4 of 4

CERTIFIED FABRICATOR

2041