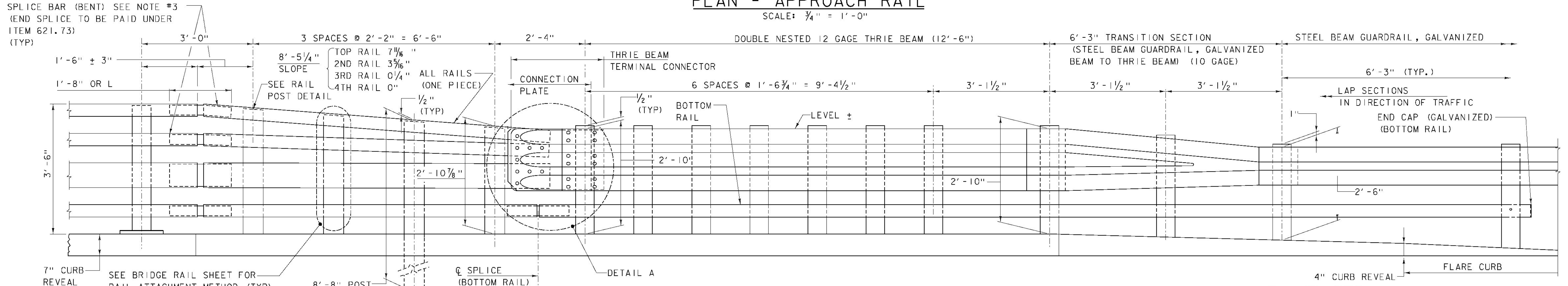
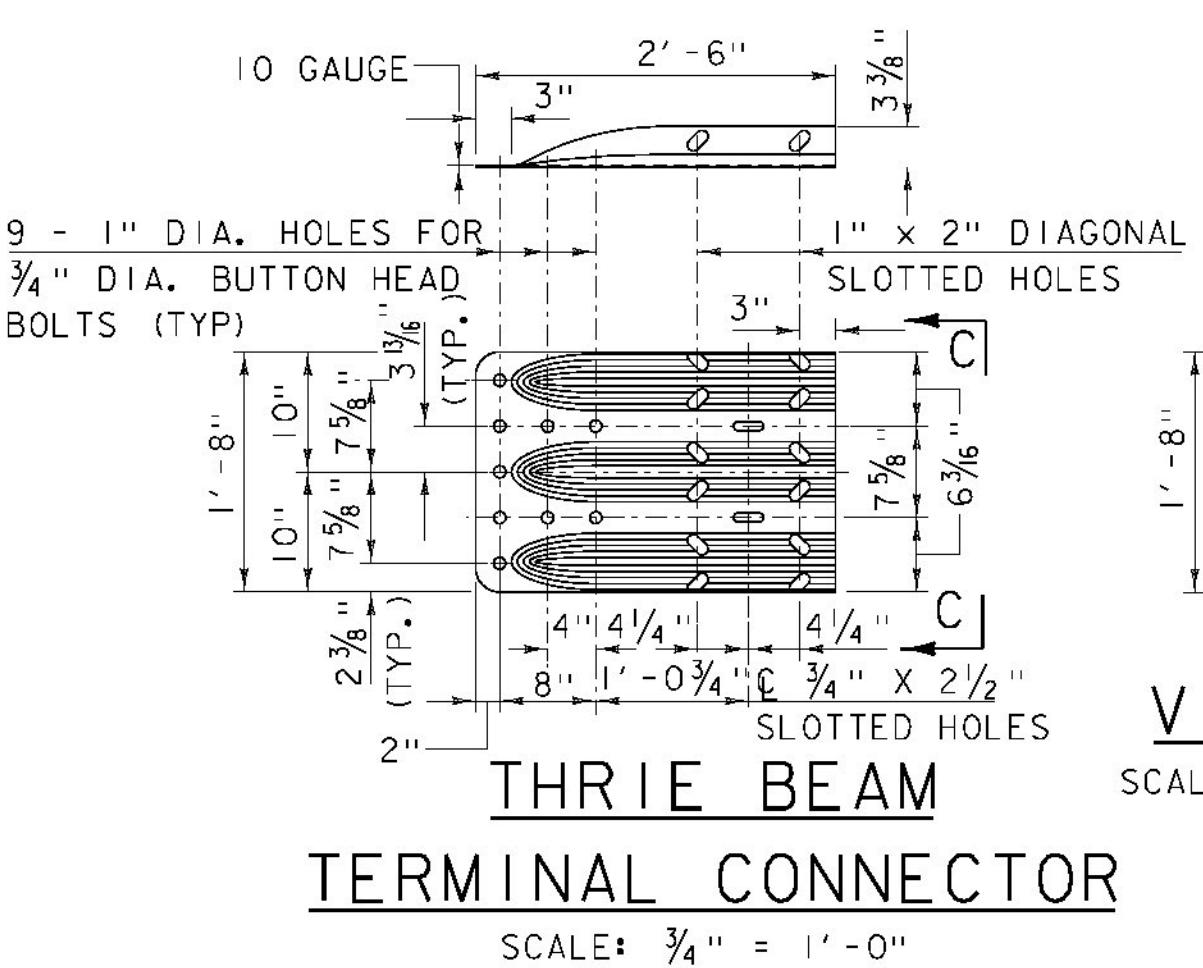


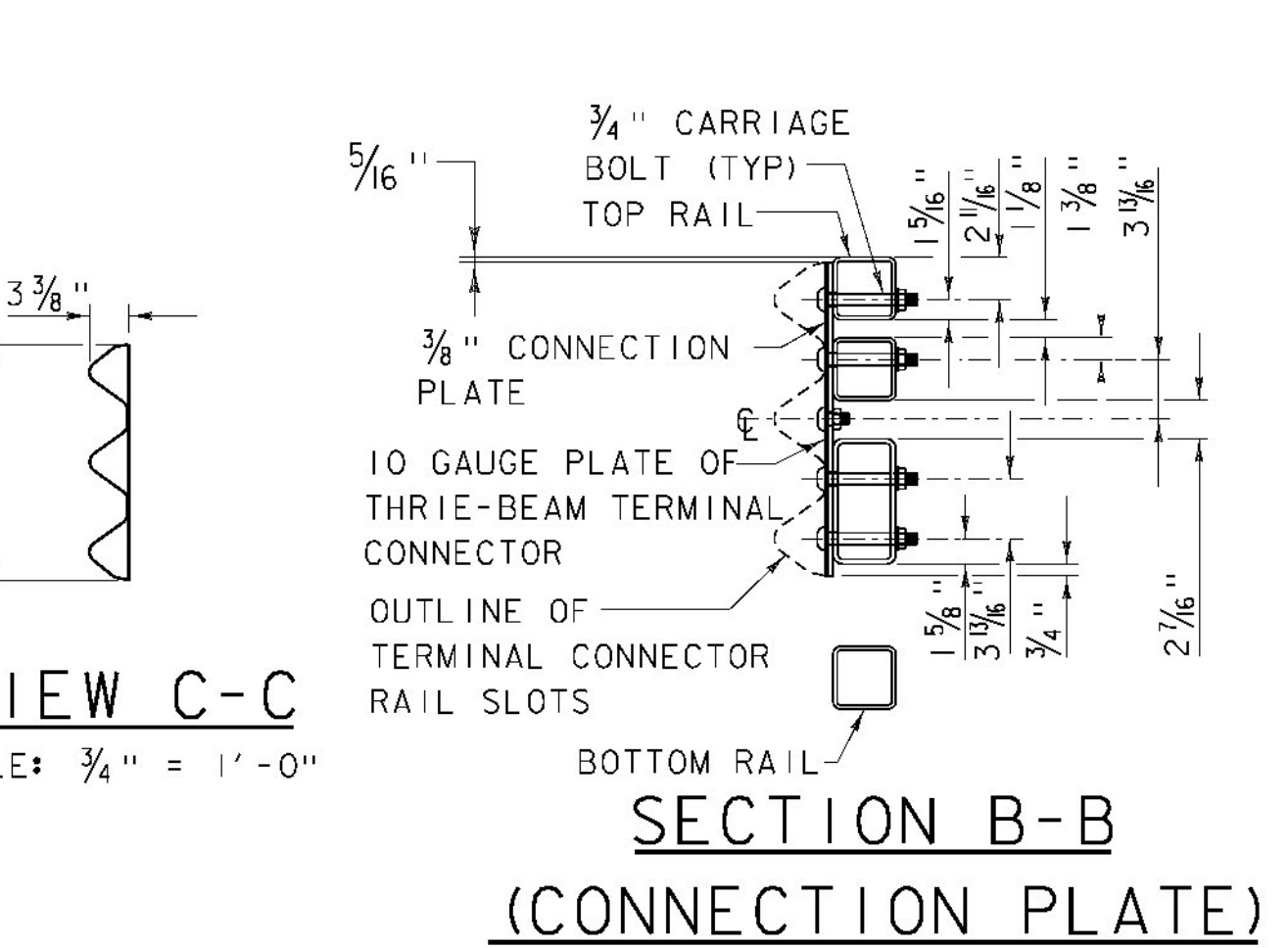
PLAN - APPROACH RAIL
SCALE: 3/4" = 1'-0"



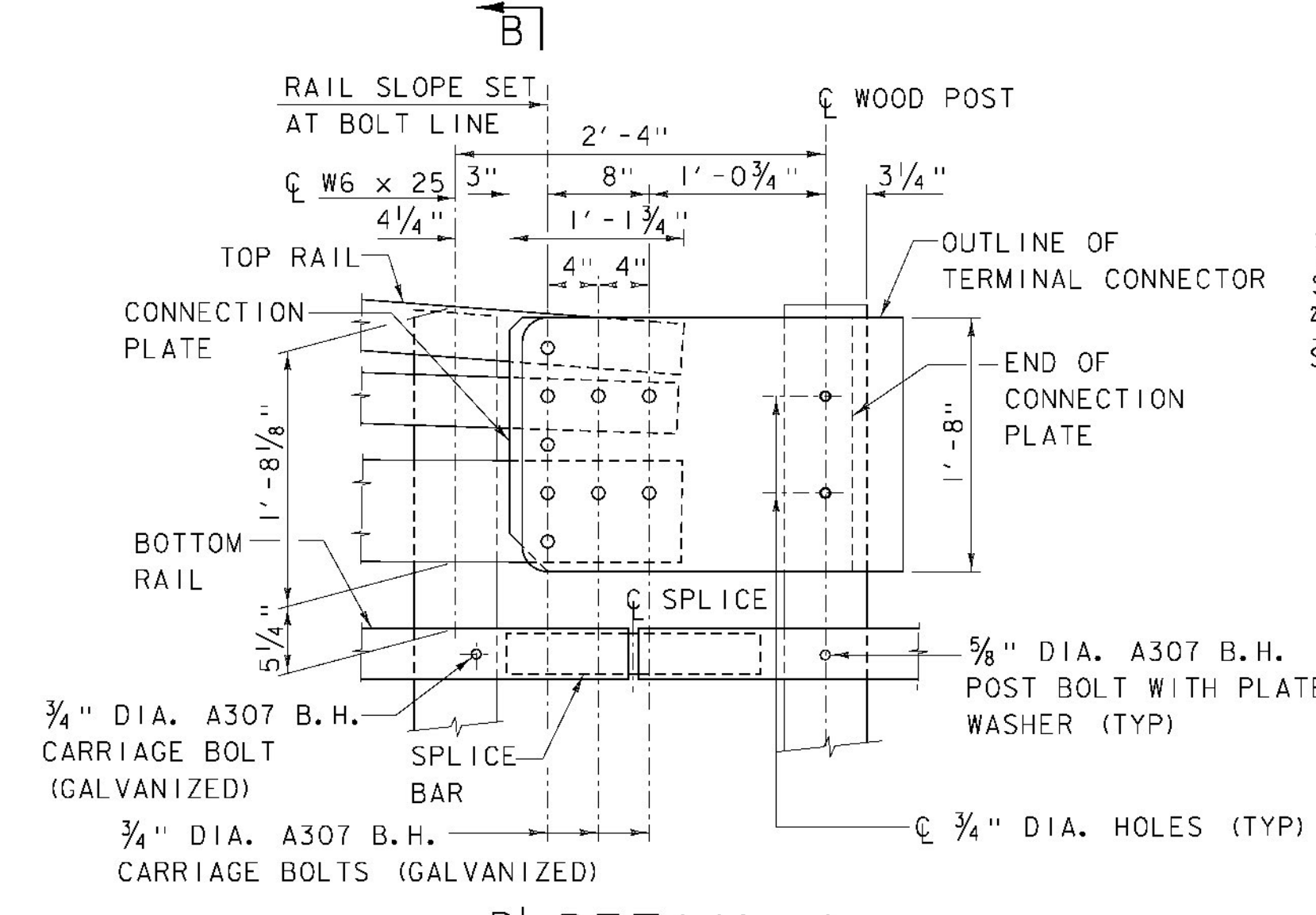
ELEVATION - APPROACH RAIL
SCALE: 3/4" = 1'-0"



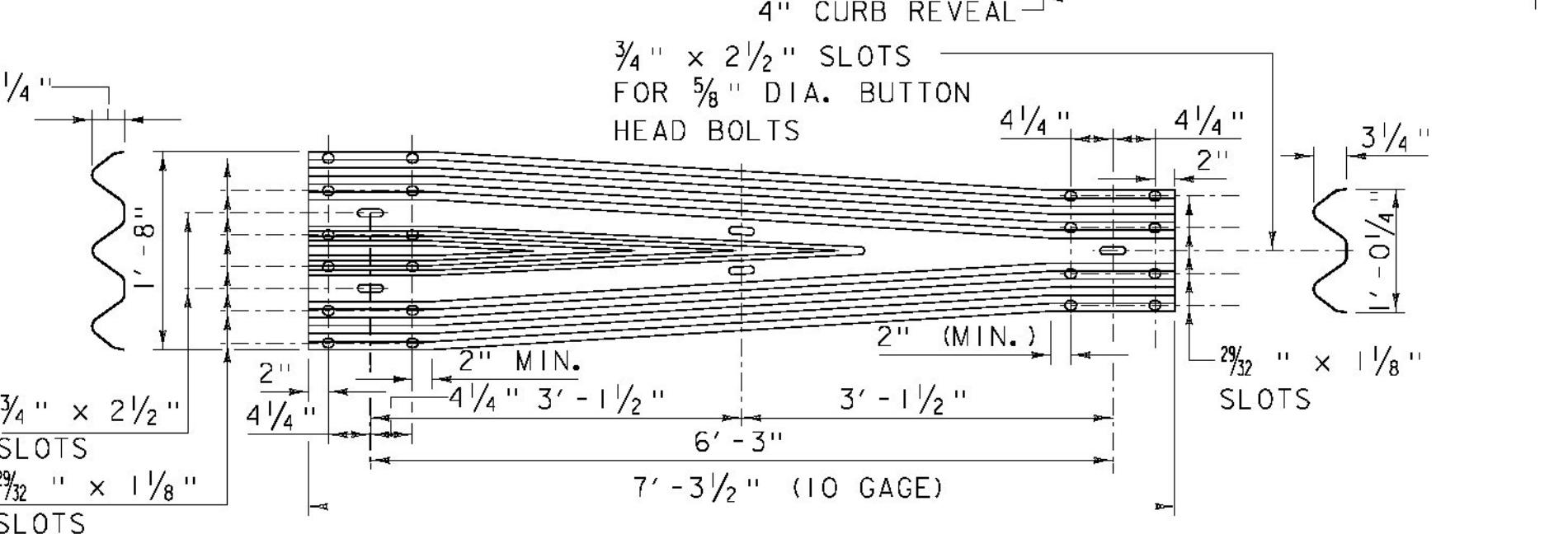
THRIE BEAM TERMINAL CONNECTOR
SCALE: 3/4" = 1'-0"



SECTION B-B (CONNECTION PLATE)
SCALE: 1" = 1'-0"

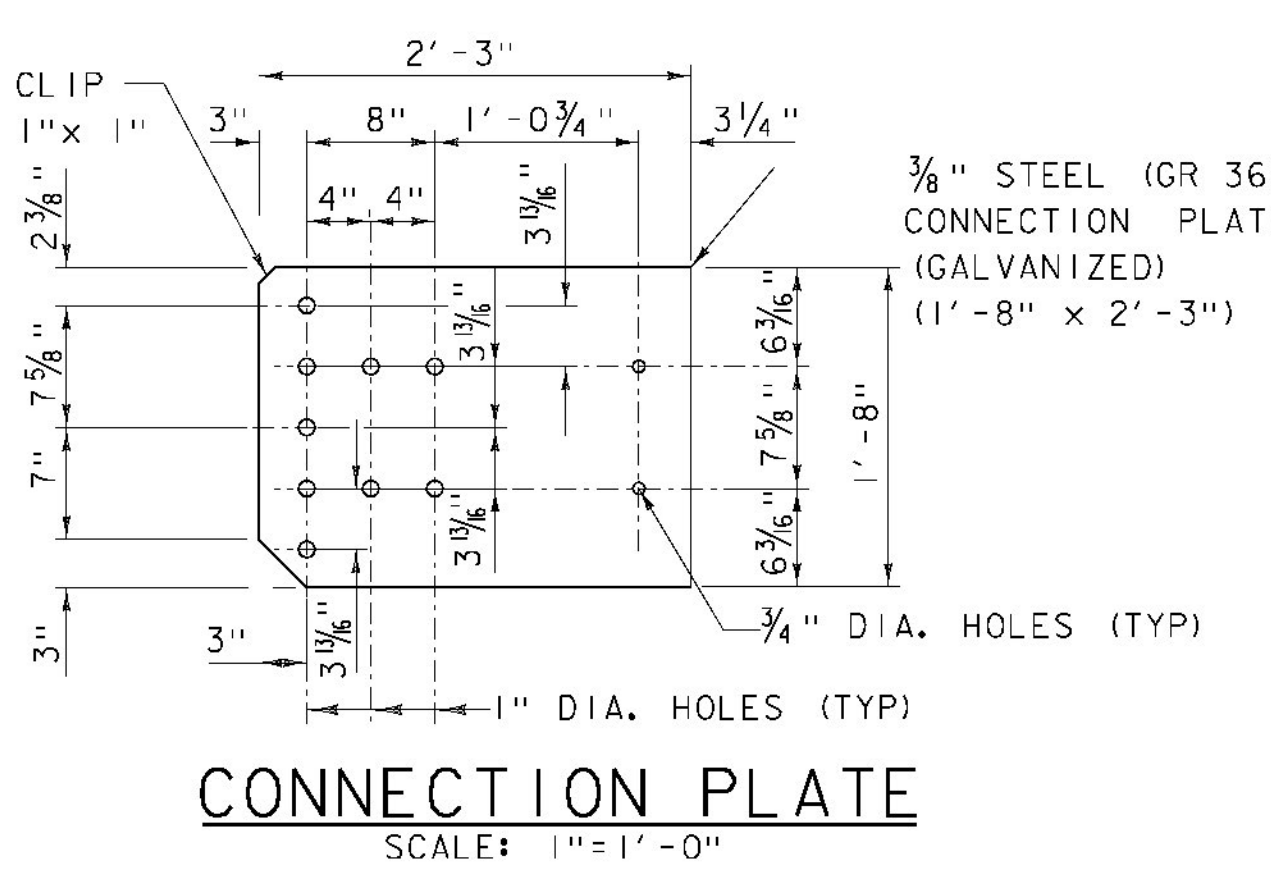


DETAIL A
SCALE: 1" = 1'-0"

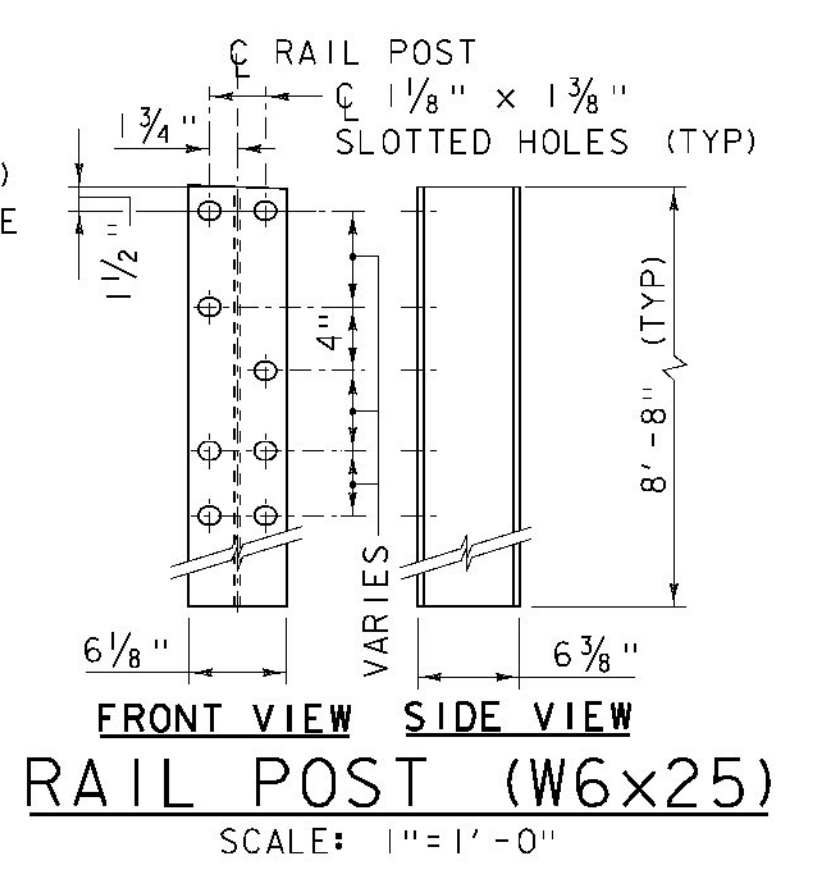


THRIE BEAM TO STEEL BEAM GUARDRAIL, GALVANIZED TRANSITION SECTION
SCALE: 3/4" = 1'-0"

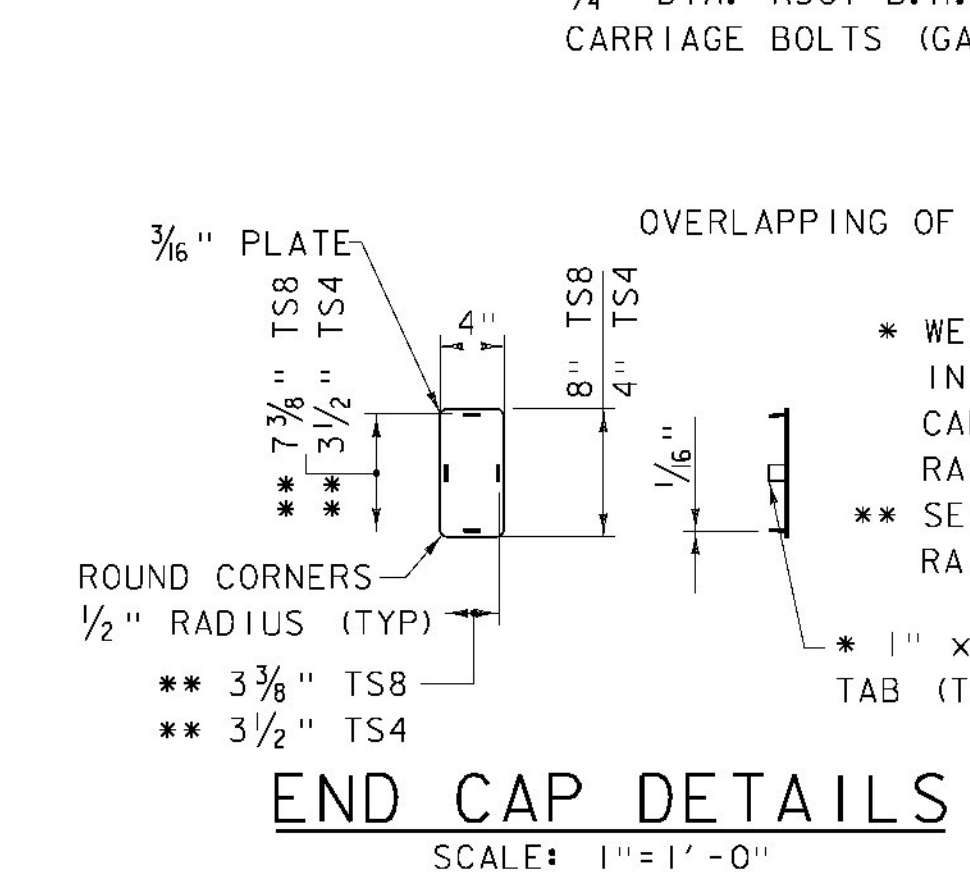
- NOTES:**
- (1) ALL BRIDGE APPROACH RAIL MATERIALS, DIMENSIONS, SIZES, AND NOTES SHALL BE THE SAME AS THOSE OF THE BRIDGE RAIL, UNLESS OTHERWISE NOTED. SEE 4 RAIL BOX BEAM BRIDGE RAIL SHEET FOR NOTES AND ADDITIONAL INFORMATION.
 - (2) CARRIAGE BOLTS SHALL BE ASTM A307, AND NUTS SHALL BE ASTM A563 GRADE A OR BETTER (GALVANIZED). WASHERS SHALL BE ASTM F844.
 - (3) WELD SPLICE BAR TO FIT BEND. USE COMPLETE JOINT PENETRATION BUTT WELD (B-U2).
 - (4) PAYMENT FOR GUARDRAIL APPROACH SECTION, GALVANIZED 4 RAIL BOX BEAM SHALL INCLUDE THE TERMINAL CONNECTOR, THE CONNECTION PLATE, THE DEFLECTOR PLATE, RAIL, POSTS, BLOCKS, AND ATTACHMENT HARDWARE.
 - (5) ALL APPROACH RAIL SPLICES SHALL BE LAPPED IN THE DIRECTION OF TRAFFIC FLOW.
 - (6) THE INFORMATION SHOWN ON THIS SHEET SHALL BE USED FOR THE APPROACH RAIL AT ALL LOCATIONS, EXCEPT FOR THE APPROACH RAIL AT WW4. APPROACH RAIL AT WW4 SHALL FOLLOW THE DETAILS AND REQUIREMENTS SHOWN ON THIS SHEET, EXCEPT AS MODIFIED IN THE APPROACH RAIL ELEVATION AT WW4 SHOWN ON THE PLAN AND ELEVATION SHEET.



CONNECTION PLATE
SCALE: 1" = 1'-0"



FRONT VIEW SIDE VIEW RAIL POST (W6x25)
SCALE: 1" = 1'-0"



END CAP DETAILS
SCALE: 1" = 1'-0"

PROJECT NAME:	LINCOLN
PROJECT NUMBER:	BRF 0188 (8)
FILE NAME:	z10j066apprail.dgn
PLOT DATE:	8-DEC-2014
PROJECT LEADER:	DRAWN BY:
DESIGNED BY:	CHECKED BY:
4 RAIL BOX BEAM APPROACH RAIL	SHEET 59 OF 62