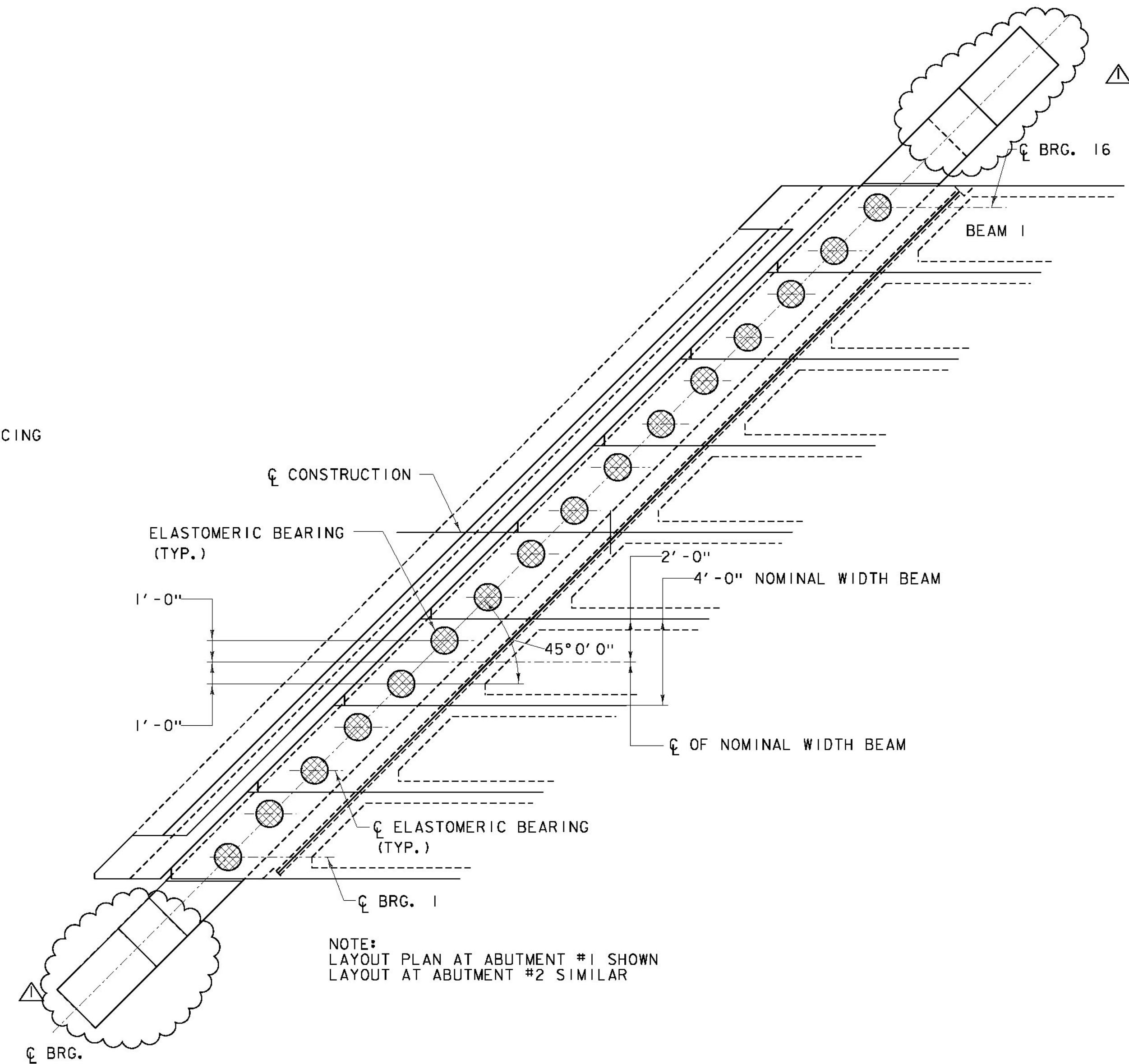


ELASTOMERIC BEARING DETAILS
SCALE: 1" = 1'-0"



BEARING NOTES:

1. BEARINGS SHALL CONFORM TO THE APPLICABLE SUBSECTIONS OF STANDARD SPECIFICATIONS SECTIONS 531 AND 731.
2. ALL REINFORCEMENT BETWEEN LAYERS OF ELASTOMER SHALL BE STEEL MEETING THE REQUIREMENTS OF AASHTO M270/M270 GRADE 36. ALL INTERNAL STEEL PLATES SHALL BE SAND BLASTED AND FREE OF COATINGS, RUST AND MILL SCALE. THE PLATES SHALL BE FREE OF SHARP EDGES AND BURRS.
3. STEEL REINFORCED ELASTOMERIC BEARINGS SHALL HAVE A MINIMUM 1/4" EDGE SEAL OF ELASTOMER INTEGRAL WITH BEARING OVER ALL INTERNAL PLATES.
4. THE ELASTOMER SHALL BE 60 DUROMETER SHORE A.
5. THE ELASTOMER SHALL MEET THE REQUIREMENTS OF LOW TEMPERATURE ZONE D, GRADE 4
6. THE CONCRETE DIRECTLY UNDER THE BEARING DEVICE SHALL BE LEVEL.
7. THE CONTRACTOR IS ADVISED TO HAVE A MINIMUM OF 32 - 1/4" X 16" X 16" GALVANIZED STEEL SHIMS AVAILABLE FOR USE FOR ELEVATION ADJUSTMENTS UPON THE SETTING OF THE SUPERSTRUCTURE UNITS. THE SHIMS SHALL BE FABRICATED ACCORDING TO SECTION 531 AND SHALL BE INCLUDED IN THE UNIT PRICE BID FOR CONTRACT ITEM 531.17.
8. ALL BEARINGS WERE DESIGNED PER AASHTO LRFD BRIDGE DESIGN SPECIFICATIONS 6TH EDITION AND ITS LATEST REVISIONS USING METHOD A.
9. SERVICE DESIGN LOADS FOR BEARINGS:
 - MAXIMUM VERTICAL LOAD = 104.7 KIPS
 - MINIMUM VERTICAL LOAD = 65.1 KIPS
 - MAXIMUM TRANSLATION = 0.60 INCHES
 - MAXIMUM ROTATION = 0.024 RADIANS

△ REVISED PRECAST ABUTMENT CONNECTORS - 1/22/2015



PROJECT NAME:	LINCOLN
PROJECT NUMBER:	BRF 0188 (8)
FILE NAME:	z10j066details.dgn
PROJECT LEADER:	G.K. DONINGTON
DESIGNED BY:	K JAMES
ELASTOMERIC BEARING DETAILS	
PLOT DATE:	8-DEC-2014
DRAWN BY:	W GERHOLD
CHECKED BY:	A STOCKIN
SHEET	25 OF 62