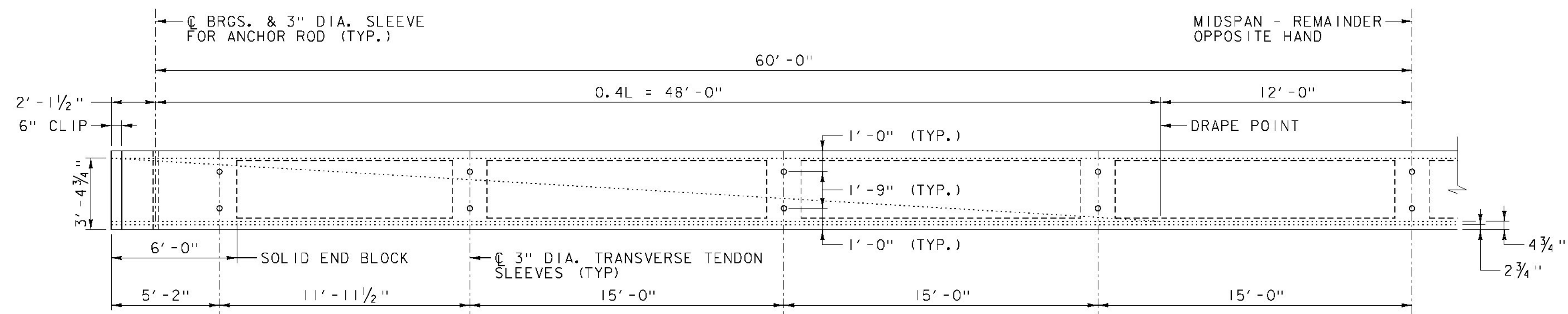


TYPICAL END OF BEAM PLAN

SCALE: 1" = 1'-0"

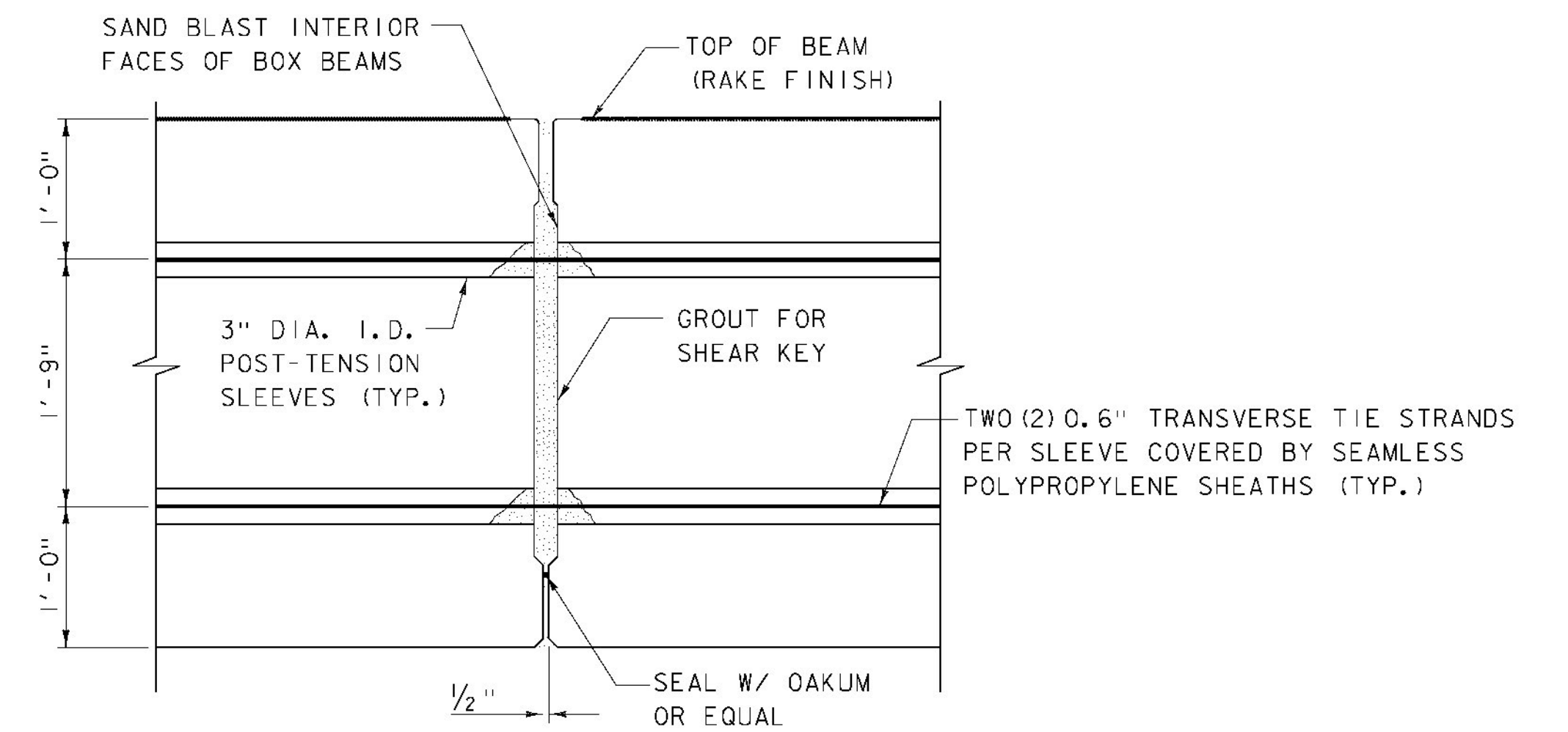
NOTES:

- FOR 8 - #5 @ 6"± AT END OF BOX BEAM, LEG LENGTH IN TOP FLANGE OF BOX BEAM SHALL BE 10'-0" MIN., AND LEG LENGTH IN BOTTOM FLANGE OF BOX BEAM SHALL BE 4'-0" MIN.
- MINIMUM LAP LENGTH FOR #5 LONGITUDINAL BARS IN TOP FLANGE OF BOX BEAM SHALL BE 3'-8".
- SEE DIAPHRAGM REINFORCING DETAILS FOR PLACEMENT OF 7-#4 @ 6" AT END OF BOX BEAM VOID.
- PROVIDE MINIMUM BAR LENGTH OF 2'-0" IN ADDITION TO LENGTH OF CONNECTOR PORTION FOR #5 BARS WITH MECHANICAL CONNECTORS AT BEAM ENDS.
- WHERE OBTUSE CORNER OF EXTERIOR BEAM IS LOCATED AT THE EXTERIOR BEAM FASCIA, THE THREE MECHANICAL CONNECTORS NEAREST THE BEAM FASCIA MAY BE OMITTED.



BOX BEAM STRAND DRAPING ELEVATION

SCALE: 1/4" = 1'-0"



TYPICAL LONGITUDINAL JOINT SECTION

SCALE: 1" = 1'-0"

SERVICE LOADS PER BEAM

BEAM SELF-WEIGHT MOMENT	2118 k-ft
DECK OVERLAY DEAD LOAD MOMENT	861 k-ft
SUPERIMPOSED DEAD LOAD MOMENT	115 k-ft
FUTURE WEARING SURFACE (FWS) MOMENT	196 k-ft
LIVE LOAD AND IMPACT MOMENT	788 k-ft

MIDSPAN CAMBER TABLE

	TRANSFER (IN)	MULT	ERECTION (IN)
PRESTRESSING	+5.94	1.80	+10.7
SELF WEIGHT	-4.43	1.85	-8.2
SUBTOTAL	+1.51		+2.5*
DECK			-1.5
SUPERIMPOSED DEAD LOAD			-0.2
SUBTOTAL			+0.8
2.5" FWS			-0.3
TOTAL			+0.5

* MINIMUM ACTUAL MIDSPAN CAMBER SHALL BE AT LEAST +2.0" AT ERECTION.



PROJECT NAME:	LINCOLN
PROJECT NUMBER:	BRF 0188 (8)
FILE NAME:	z10j066boxbeam2.dgn
PROJECT LEADER:	G.K. DONINGTON
DESIGNED BY:	K JAMES
BOX BEAM DETAILS SHEET 2	
PLOT DATE:	8-DEC-2014
DRAWN BY:	W GERHOLD
CHECKED BY:	A STOCKIN
SHEET 24	OF 62