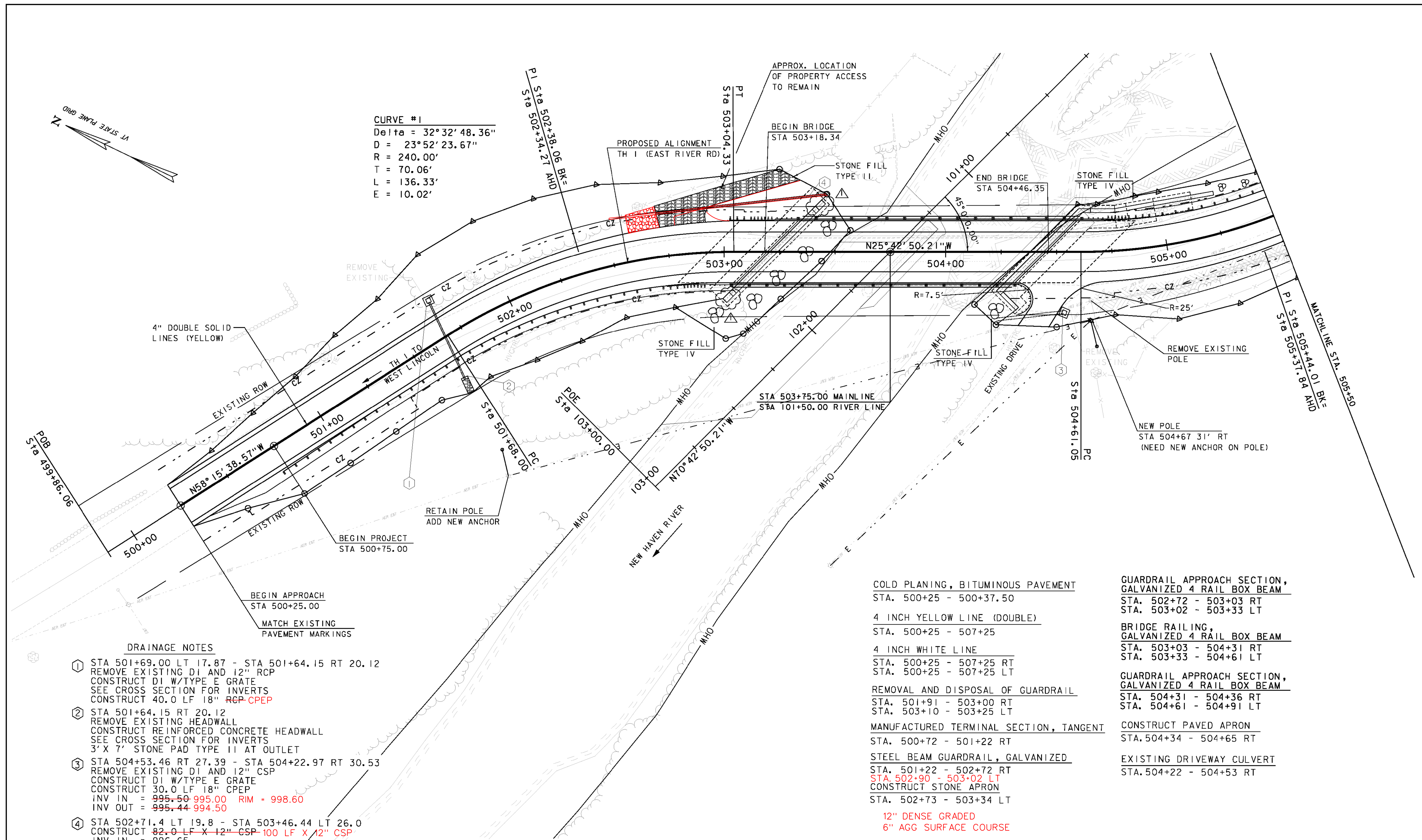


CURVE #1
 Delta = 32° 32' 48.36"
 D = 23° 52' 23.67"
 R = 240.00'
 T = 70.06'
 L = 136.33'
 E = 10.02'



- DRAINAGE NOTES**
- ① STA 501+69.00 LT 17.87 - STA 501+64.15 RT 20.12
 REMOVE EXISTING D1 AND 12" RCP
 CONSTRUCT D1 W/TYPE E GRATE
 SEE CROSS SECTION FOR INVERTS
 CONSTRUCT 40.0 LF 18" RCP-CPEP
 - ② STA 501+64.15 RT 20.12
 REMOVE EXISTING HEADWALL
 CONSTRUCT REINFORCED CONCRETE HEADWALL
 SEE CROSS SECTION FOR INVERTS
 3' X 7' STONE PAD TYPE II AT OUTLET
 - ③ STA 504+53.46 RT 27.39 - STA 504+22.97 RT 30.53
 REMOVE EXISTING D1 AND 12" CSP
 CONSTRUCT D1 W/TYPE E GRATE
 CONSTRUCT 30.0 LF 18" CPEP
 INV IN = 995.50 995.00 RIM = 998.60
 INV OUT = 995.44 994.50
 - ④ STA 502+71.4 LT 19.8 - STA 503+46.44 LT 26.0
 CONSTRUCT 82.0 LF X 12" CSP-100 LF X 12" CSP
 INV IN = 996.65
 INV OUT = 993.50

- COLD PLANING, BITUMINOUS PAVEMENT
 STA. 500+25 - 500+37.50
- 4 INCH YELLOW LINE (DOUBLE)
 STA. 500+25 - 507+25
- 4 INCH WHITE LINE
 STA. 500+25 - 507+25 RT
 STA. 500+25 - 507+25 LT
- REMOVAL AND DISPOSAL OF GUARDRAIL
 STA. 501+91 - 503+00 RT
 STA. 503+10 - 503+25 LT
- MANUFACTURED TERMINAL SECTION, TANGENT
 STA. 500+72 - 501+22 RT
- STEEL BEAM GUARDRAIL, GALVANIZED
 STA. 501+22 - 502+72 RT
 STA. 502+90 - 503+02 LT
 CONSTRUCT STONE APRON
 STA. 502+73 - 503+34 LT
- 12" DENSE GRADED
 6" AGG SURFACE COURSE
- GUARDRAIL APPROACH SECTION, GALVANIZED 4 RAIL BOX BEAM
 STA. 502+72 - 503+03 RT
 STA. 503+02 - 503+33 LT
- BRIDGE RAILING, GALVANIZED 4 RAIL BOX BEAM
 STA. 503+03 - 504+31 RT
 STA. 503+33 - 504+61 LT
- GUARDRAIL APPROACH SECTION, GALVANIZED 4 RAIL BOX BEAM
 STA. 504+31 - 504+36 RT
 STA. 504+61 - 504+91 LT
- CONSTRUCT PAVED APRON
 STA. 504+34 - 504+65 RT
- EXISTING DRIVEWAY CULVERT
 STA. 504+22 - 504+53 RT

△ REVISED PRECAST ABUTMENT CONNECTORS - 1/22/2015
 SCALE 1" = 20'-0"
 0 20



PROJECT NAME:	LINCOLN	FILE NAME:	z10j066bdr.dgn	PLOT DATE:	8-DEC-2014
PROJECT NUMBER:	BRF 0188 (8)	PROJECT LEADER:	G.K. DONNINGTON	DRAWN BY:	C. CARNEY
		DESIGNED BY:	C. CARNEY	CHECKED BY:	R. BENJAMIN
		LAYOUT SHEET (I)		SHEET 10	OF 62