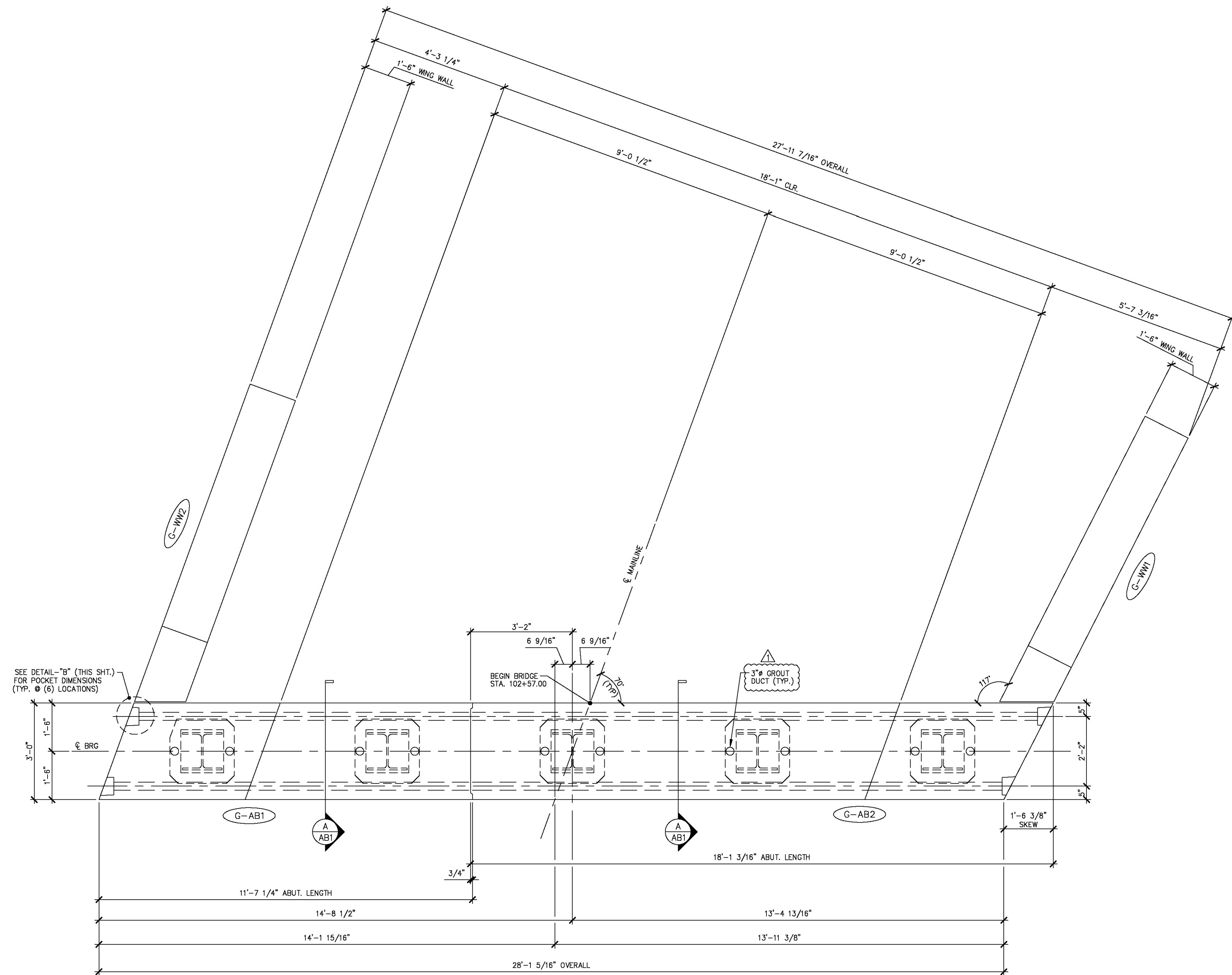


S:\Engineering Services\Carrara\116001 - Guilford Bridge 65\Production Drawings\AutoCAD Files\144236-AB.dwg, 5/16/2014 4:44:37 PM, DWG To PDF.pc3



1 ABUTMENT ASSEMBLY PLAN  
1/4" = 1'-0"

Vermont Agency of Transportation  
**RECEIVED**  
Guilford 1442 (36) - Precast Submittal 003.pdf

CK'D BY MJC OK'D BY TAS

June 18, 2014

RESUBMIT No Approved  
BY M. J. Chenette DATE 06/19/2014

**SHOP DRAWING REVIEW**

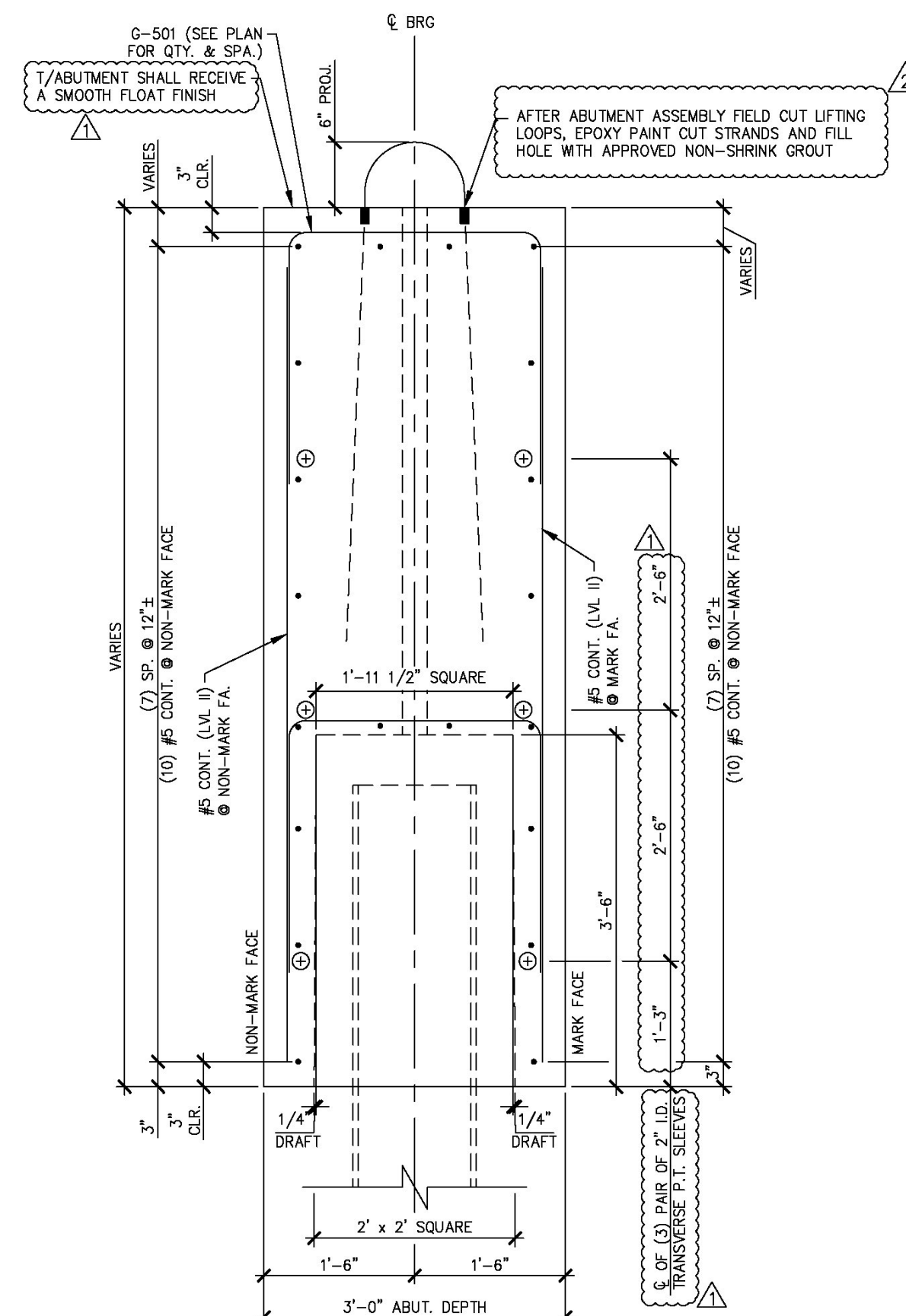
REVIEWED AS REQUIRED BY THE CONSTRUCTION CONTRACT DOCUMENTS AND APPROVED, BUT ONLY FOR CONFORMANCE TO THE DESIGN CONCEPT OF THE WORK, AND SUBJECT TO FURTHER LIMITATIONS AND REQUIREMENTS CONTAINED IN THE CONSTRUCTION CONTRACT DOCUMENTS

REJECTED  REVISE AND RESUBMIT  FURNISH AS CORRECTED

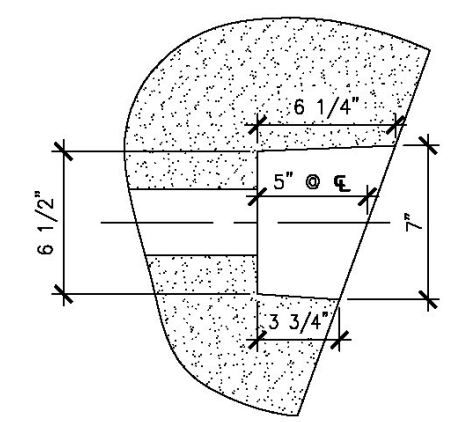
CORRECTIONS OR COMMENTS MADE ON THE SHOP DRAWINGS DURING THIS REVIEW DO NOT RELIEVE CONTRACTOR FROM COMPLIANCE WITH REQUIREMENTS OF THE DRAWINGS AND SPECIFICATIONS. THIS CHECK IS ONLY FOR REVIEW OF GENERAL CONFORMANCE WITH THE DESIGN CONCEPT OF THE PROJECT AND GENERAL COMPLIANCE WITH THE INFORMATION GIVEN IN THE CONTRACT DOCUMENTS. THE CONTRACTOR IS RESPONSIBLE FOR CONFIRMING AND CORRELATING ALL QUANTITIES AND DIMENSIONS, SELECTING FABRICATION PROCESSES AND TECHNIQUES OF CONSTRUCTION, COORDINATING HIS WORK WITH THAT OF ALL OTHER TRADES, AND PERFORMING HIS WORK IN A SAFE AND SATISFACTORY MANNER.

**Vanasse Hangen Brustlin, Inc.**  
7056 US Route 7  
North Ferrisburgh, VT 05473  
802-425-7789

Job Number: 57427.00  
Reviewed By: S.E. Burbank  
Date: 06/19/2014



A ABUTMENT SECTION  
1/4" = 1'-0"



DETAIL - "B"  
1 1/2" = 1'-0"

4-7-14 REVISED AS NOTED  
5-6-14 REVISED AS NOTED

APPROVAL STAMP:	<b>J.P. CARRARA &amp; SONS INC.</b> Precast & Prestress Manufacturer N.T.S. 244 CASE STR. MIDDLEBURY, VERMONT 05753 Phone:(802)388-6361 Fax:(802)388-9010	
STATE OF VERMONT AGENCY OF TRANSPORTATION COUNTY OF WINDHAM	DATE: MAR. 04, 2014	SCALE: NOTED
TOWN OF GUILFORD ROUTE NO. T.H.10, CLASS III (LOCAL ROAD) BRIDGE NO.: 65 PROJECT NO.: BRO 1442 (36)	CHKD: JJ/KLT DFTM: AAT/RWS	JOB NO: 23420-014
PRECAST ABUTMENT DETAILS	DWG. NO: AB1	

**Eriksson technologies** 813.989.3317  
TAMPA, FL LRFD.COM  
© 2014 ERIKSSON TECHNOLOGIES, INC. ALL RIGHTS RESERVED