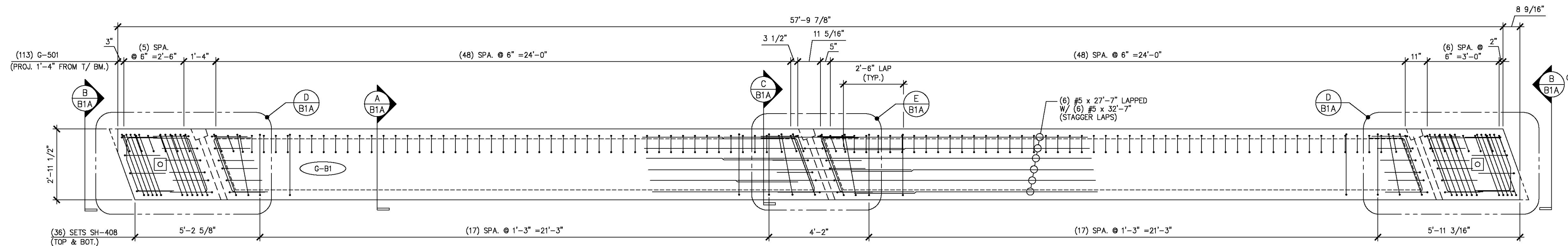
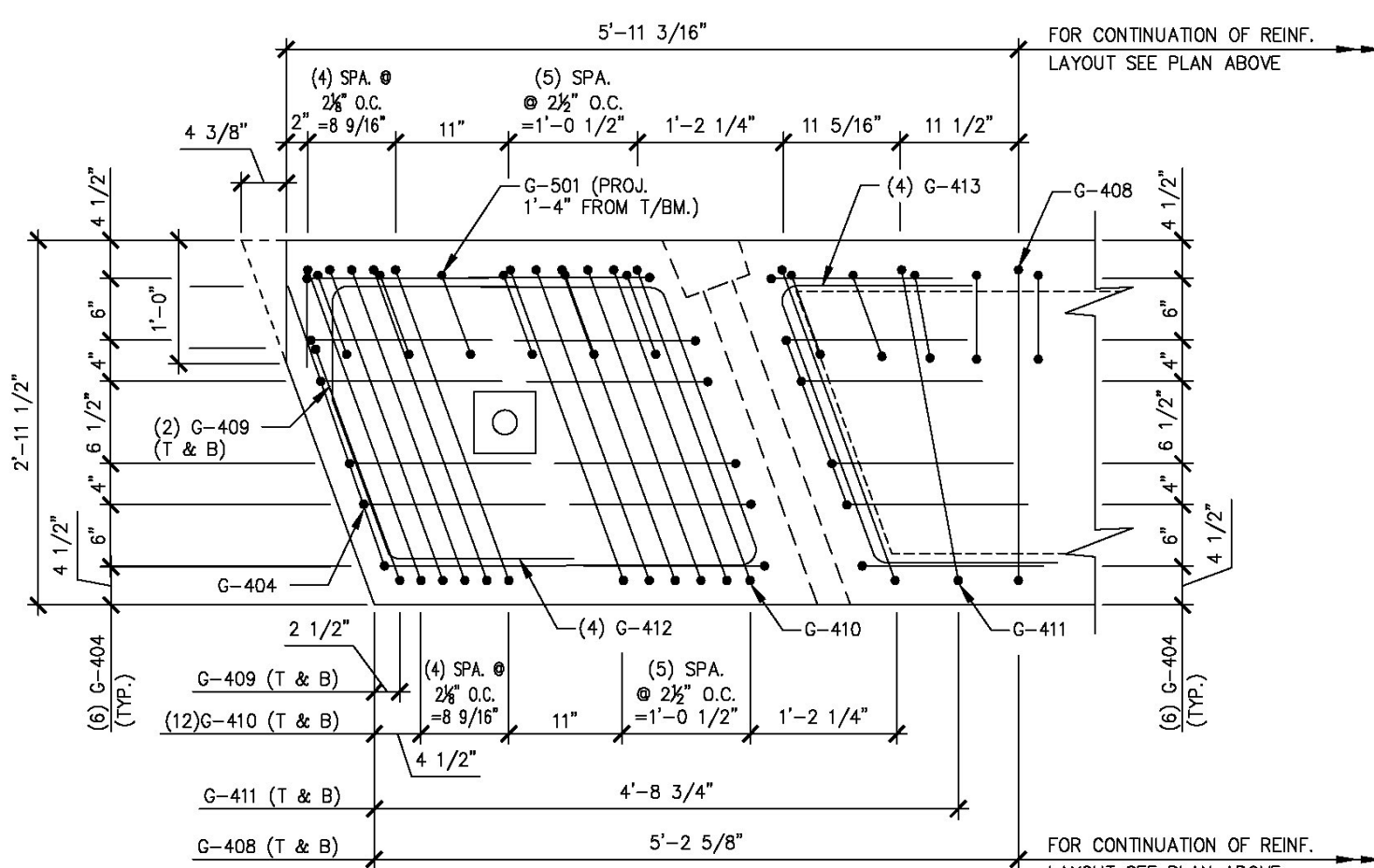


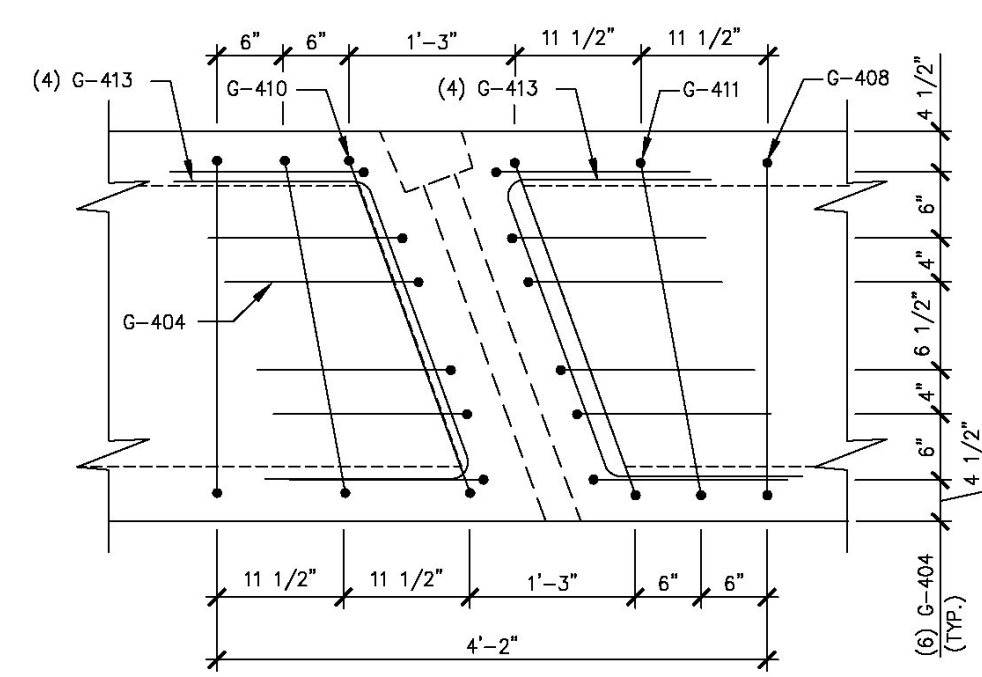
S:\Engineering Services\Carrara\14001 - Guilford Bridge 651\Production Drawings\AutoCAD Files\144236-B1a(NEW).dwg, 5/6/2014 4:44:22 PM, DWG To PDF.pc3



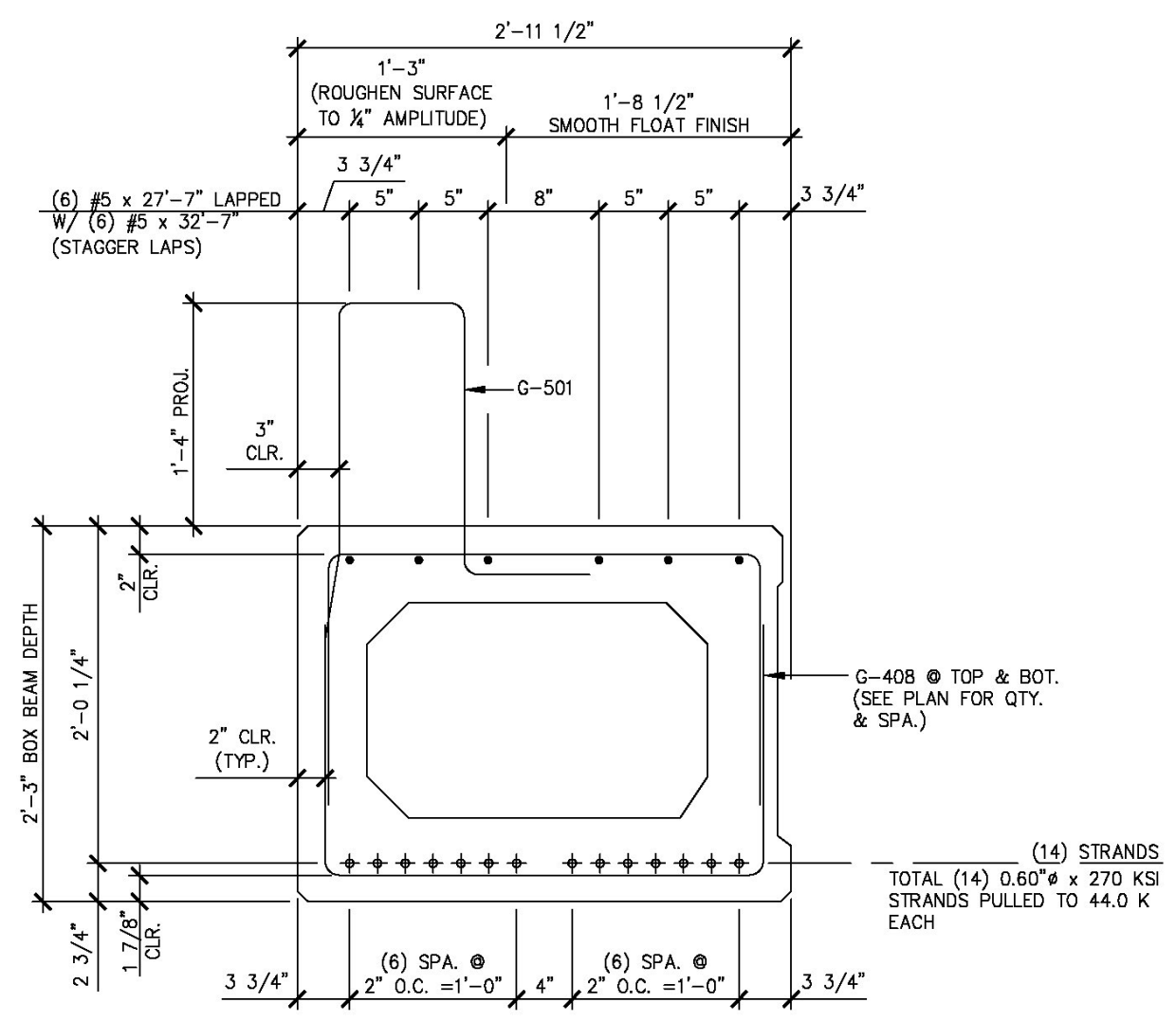
1 REINFORCING PLAN VIEW IN FORM
B1A 3/8" = 1'-0"



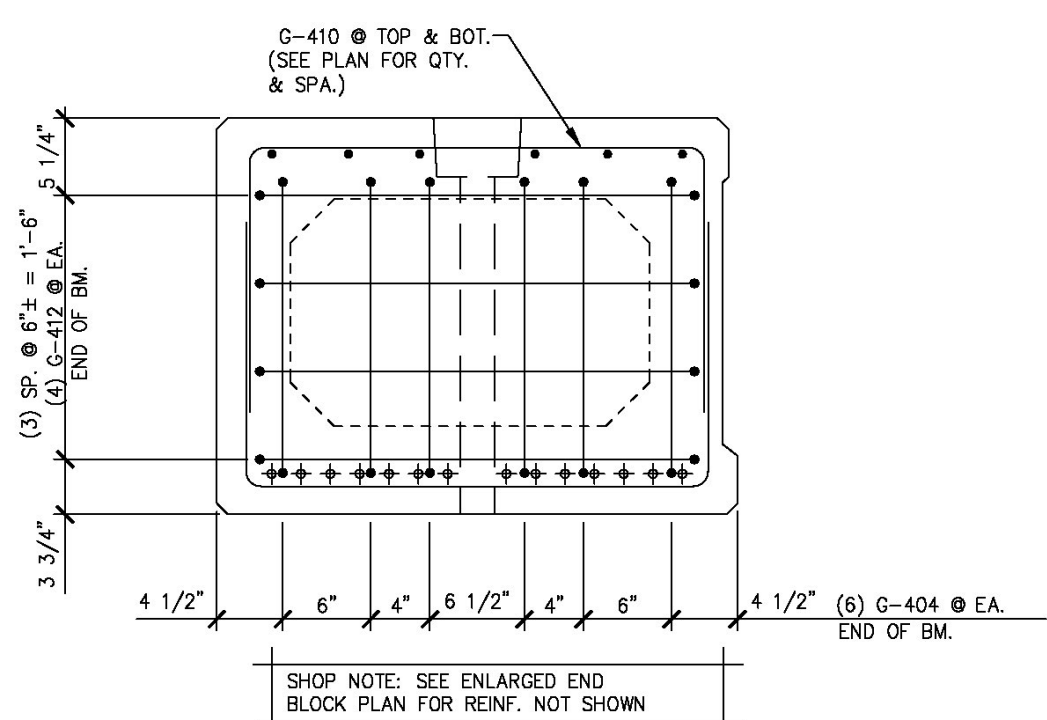
D END BLOCK REINFORCING PLAN
B1A 3/4" = 1'-0"



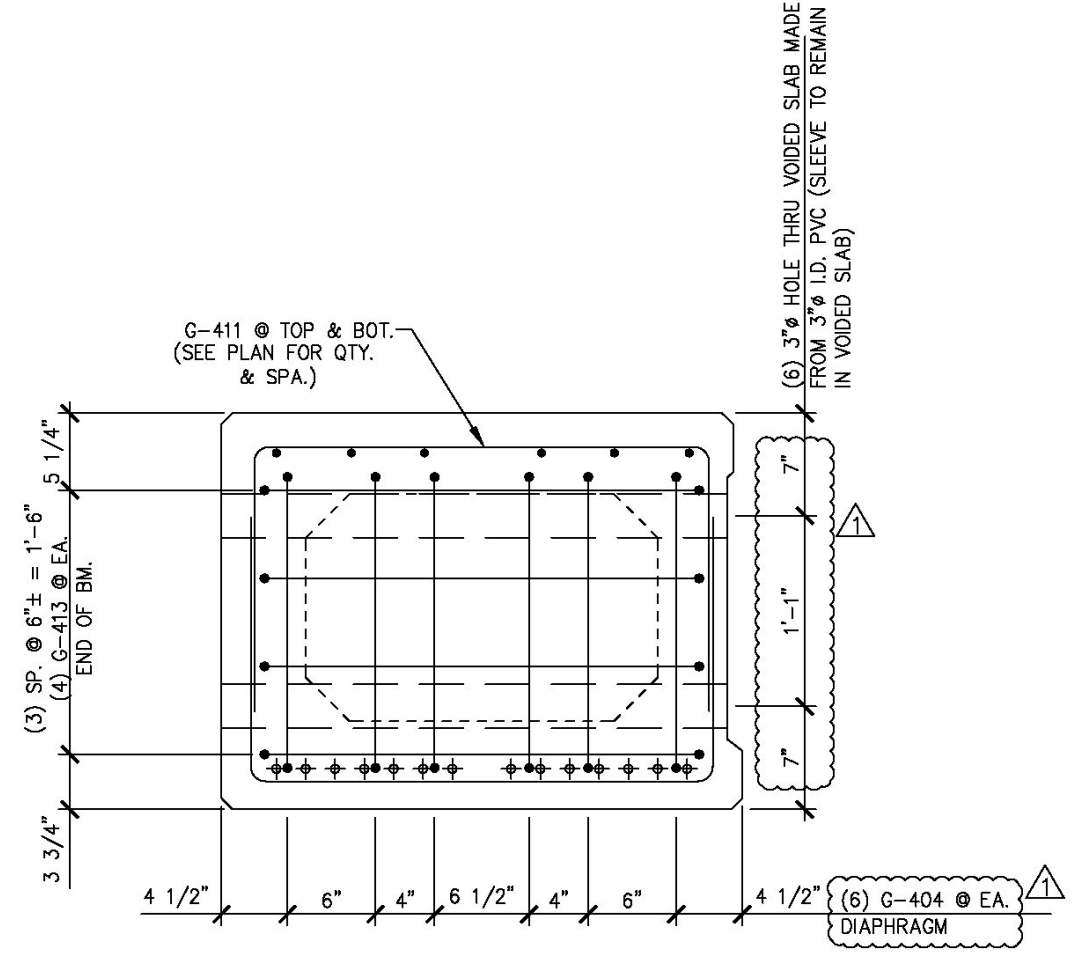
E P.T. DIAPHRAGM REINFORCING PLAN
B1A 3/4" = 1'-0"



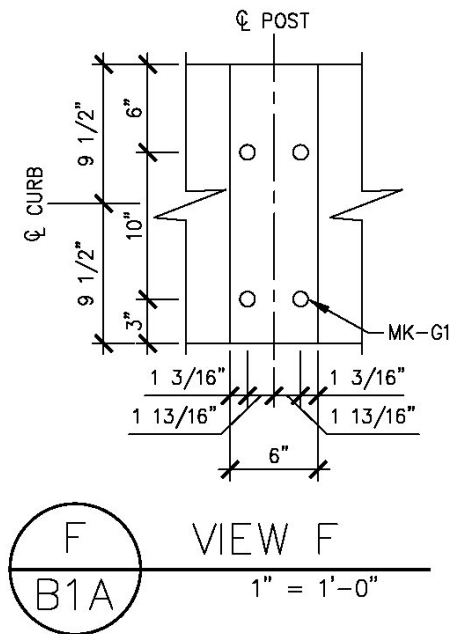
A REINFORCING SECTION
B1A 1" = 1'-0"



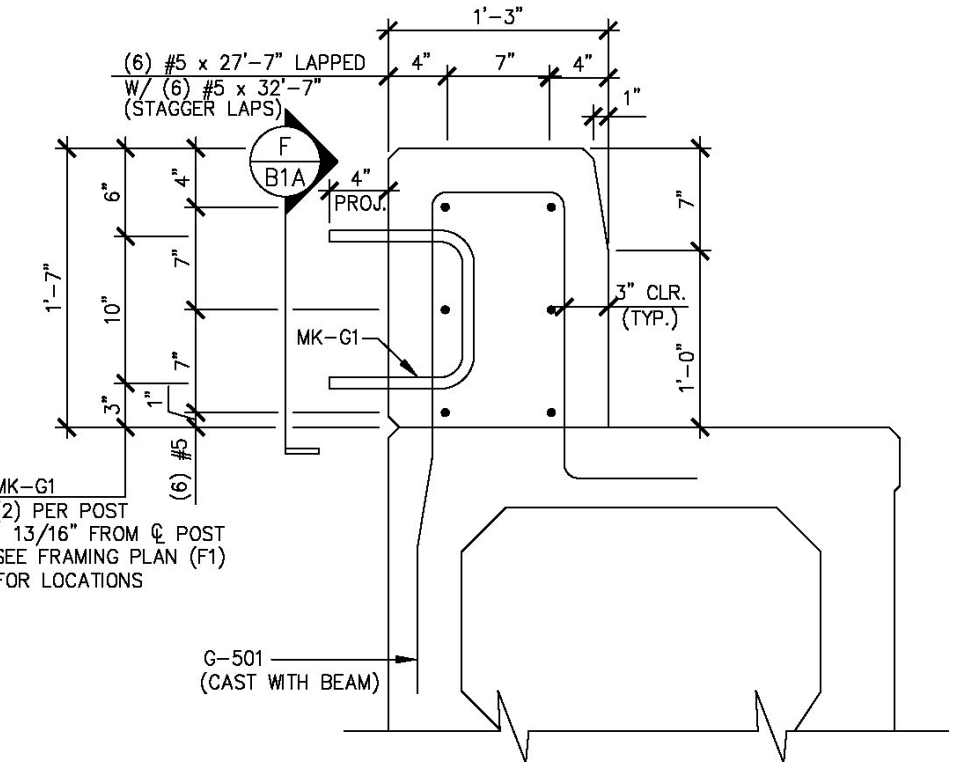
B END BLOCK REINF. SECTION
B1A 1" = 1'-0"



C P.T. DIAPHRAGM REINF. SECTION
B1A 1" = 1'-0"



F VIEW F
B1A 1" = 1'-0"



SECONDARY POUR DETAIL
1" = 1'-0"

Vermont Agency of Transportation
RECEIVED
CK'D BY MJC OK'D BY TAS
June 18, 2014

RESUBMIT No Approved
BY M. J. Chenette DATE 06/19/2014

1 3 5 7 9 11 13 14 12 10 8 6 4 2

DENYSIONING SCHEDULE
N.T.S.

MARK: G-B1		QTY.: 1	
MATERIAL LIST / BEAM			
ITEM	MARK	DESCRIPTION	QTY.
1	G-404	#4 BENT BAR (LEVEL II - DUAL COATED)	48
2	G-408	#4 BENT BAR (LEVEL II - DUAL COATED)	72
3	G-409	#4 BENT BAR (LEVEL II - DUAL COATED)	4
4	G-410	#4 BENT BAR (LEVEL II - DUAL COATED)	52
5	G-411	#4 BENT BAR (LEVEL II - DUAL COATED)	8
6	G-412	#4 BENT BAR (LEVEL II - DUAL COATED)	8
7	G-413	#4 BENT BAR (LEVEL II - DUAL COATED)	24
8	G-501	#5 BENT BAR (LEVEL II - DUAL COATED)	113
9			
10			
11			
12			
13			
14			
15			
16		#5 x 27'-7" (LEVEL II - DUAL COATED)	12
17		#5 x 32'-7" (LEVEL II - DUAL COATED)	12
18			
19			
20			
21			
22	MK-G1	1" ANCHOR "U" BOLTS (SUPPLIED BY OTHERS)	18
23			
24			
25			

SHOP DRAWING REVIEW

REVIEWED AS REQUIRED BY THE CONSTRUCTION CONTRACT DOCUMENTS AND APPROVED, BUT ONLY FOR CONFORMANCE TO THE DESIGN CONCEPT OF THE WORK, AND SUBJECT TO FURTHER LIMITATIONS AND REQUIREMENTS CONTAINED IN THE CONSTRUCTION CONTRACT DOCUMENTS.

REJECTED REVISE AND RESUBMIT FURNISH AS CORRECTED

CORRECTIONS OR COMMENTS MADE ON THE SHOP DRAWINGS DURING THIS REVIEW DO NOT RELIEVE CONTRACTOR FROM COMPLIANCE WITH REQUIREMENTS OF THE DRAWINGS AND SPECIFICATIONS. THIS CHECK IS ONLY FOR REVIEW OF GENERAL CONFORMANCE WITH THE DESIGN CONCEPT OF THE PROJECT AND GENERAL COMPLIANCE WITH THE INFORMATION GIVEN IN THE CONTRACT DOCUMENTS. THE CONTRACTOR IS RESPONSIBLE FOR CONFIRMING AND CORRELATING ALL QUANTITIES AND DIMENSIONS, SELECTING FABRICATION PROCESSES AND TECHNIQUES OF CONSTRUCTION, COORDINATING HIS WORK WITH THAT OF ALL OTHER TRADES, AND PERFORMING HIS WORK IN A SAFE AND SATISFACTORY MANNER.

Vannesse Hagen Brustlin, Inc.
7056 US Route 7
North Ferrisburgh, VT 05473
802.425.7788

Job Number: 57427 00
Reviewed By: S.E. Burbank
Date: 06/19/2014

4-7-14 REVISED AS NOTED

APPROVAL STAMP:

J.P. CARRARA & SONS INC.
Precast & Prestress Manufacturer N.T.S.
244 OASE ST., WINDHAM, VERMONT 05751 Phone:(802)388-6361 Fax:(802)388-9010

STATE OF VERMONT AGENCY OF TRANSPORTATION
COUNTY OF WINDHAM

DATE: MAR. 04, 2014
SCALE: NOTED

TOWN OF GUILFORD
ROUTE NO. T.H.10, CLASS III (LOCAL ROAD)
BRIDGE NO.: 65 PROJECT NO.: BRO 1442 (36)

CHKD: JJ/KLT DFTM:AA1/RWS
JOB NO: 23420-014

PRESTRESSED BOX BEAM
REINFORCING DETAILS

DWG. NO: B1A

Eriksson technologies
813.989.3317
TAMPA, FL LRFD.COM
© 2014 ERIKSSON TECHNOLOGIES, INC. ALL RIGHTS RESERVED